
THE PAXON



CANADIANA A1



FARMHOUSE A2



MODERN A3



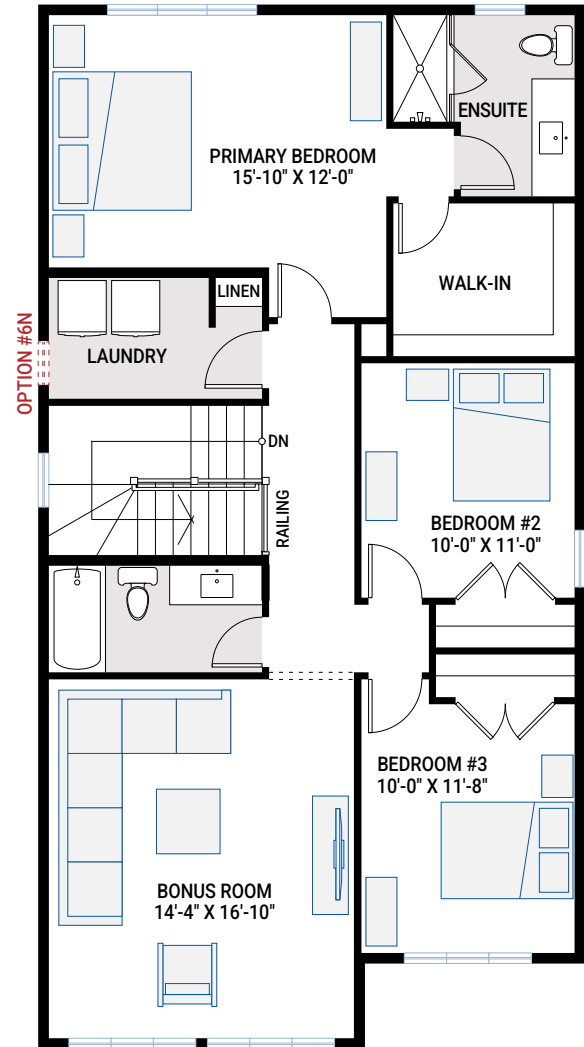
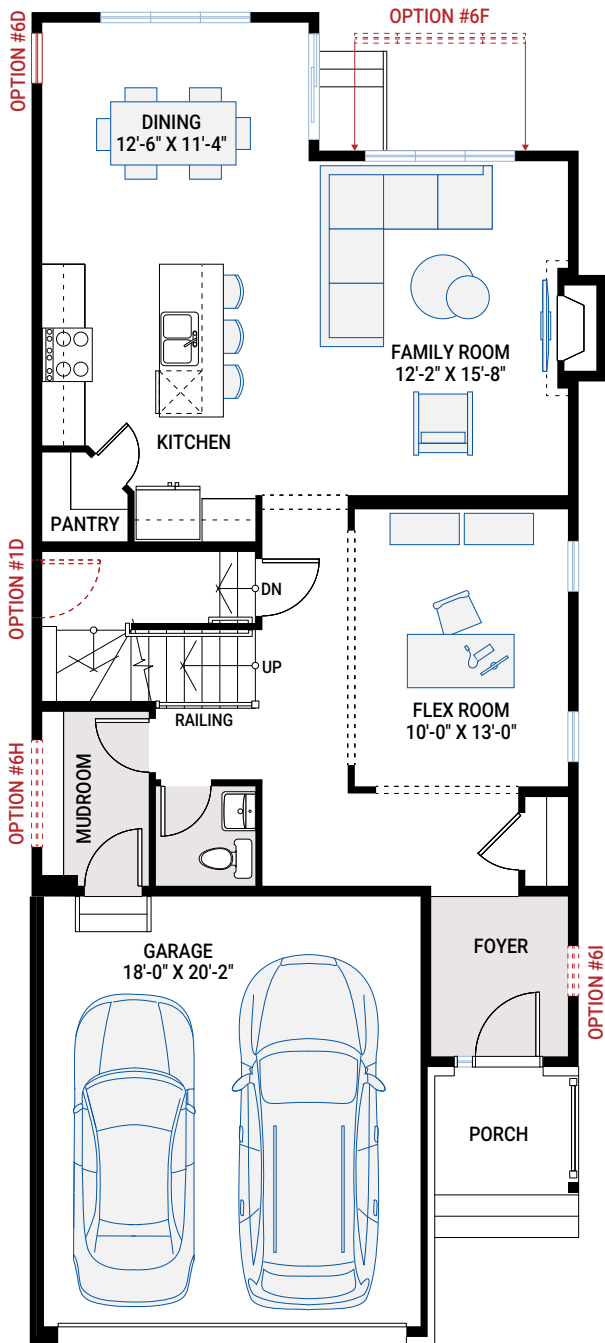
CANADIANA A4

MAIN FLOOR

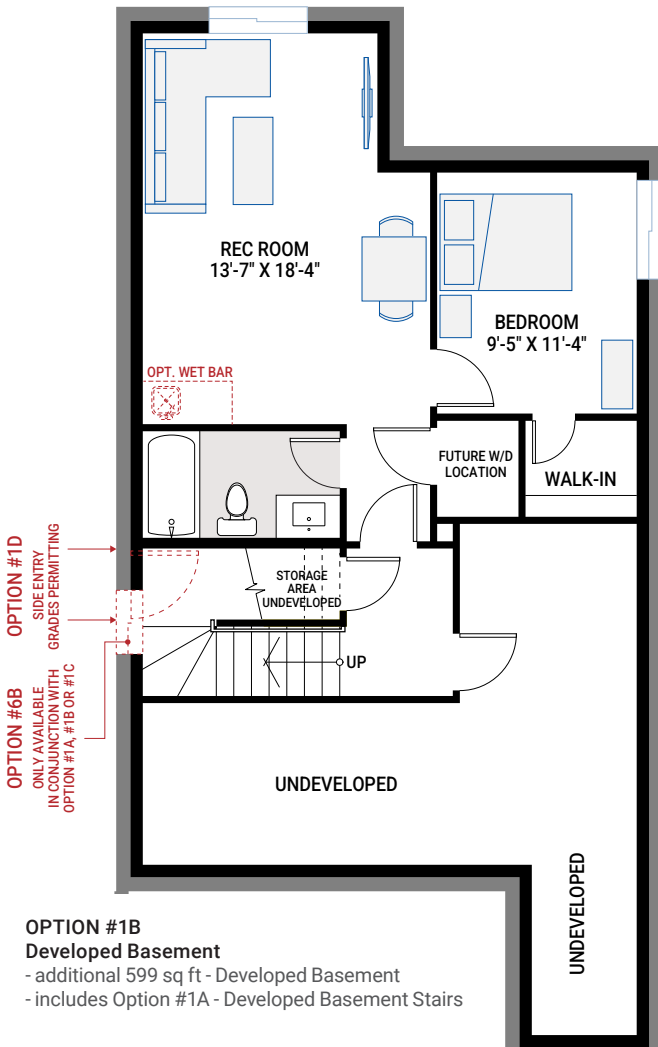
1,067 SQ FT

UPPER FLOOR

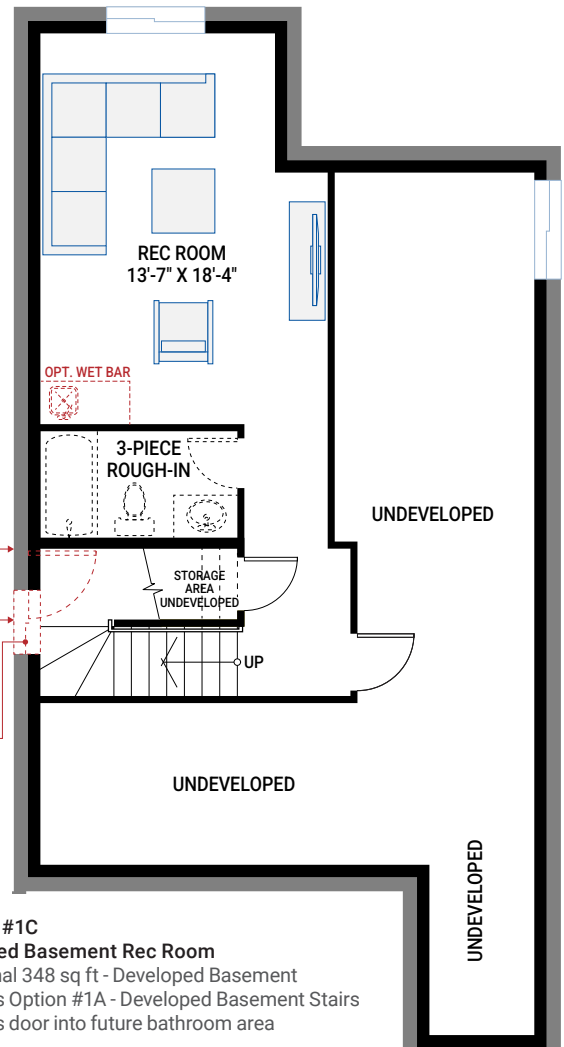
1,229 SQ FT



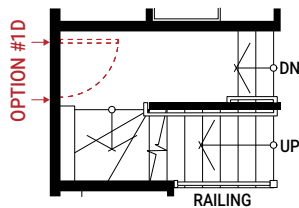
BASEMENT OPTIONS



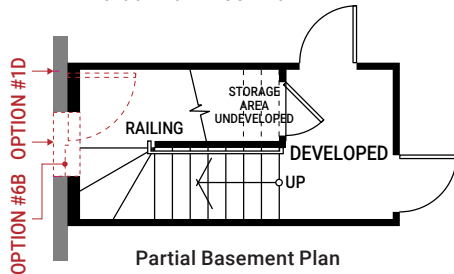
OPTION #1B
 Developed Basement
 - additional 599 sq ft - Developed Basement
 - includes Option #1A - Developed Basement Stairs



OPTION #1C
 Developed Basement Rec Room
 - additional 348 sq ft - Developed Basement
 - includes Option #1A - Developed Basement Stairs
 - includes door into future bathroom area

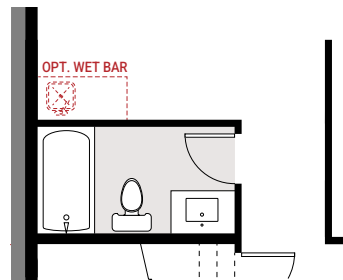


Partial Main Floor Plan



Partial Basement Plan

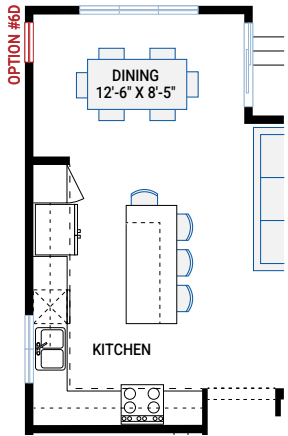
OPTION #1A
 Developed Basement Stairs
 - additional 40 sq ft basement landing



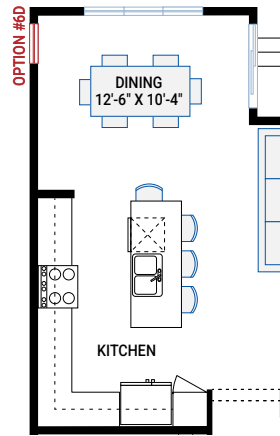
OPTION #1F
 Developed Basement Bathroom
 - only available with Option #1C
 - adds 57 sq ft to Developed Basement

OPTION #4B
 9'-0" Basement Ceiling
 - add 2 risers to the bottom of basement stairs

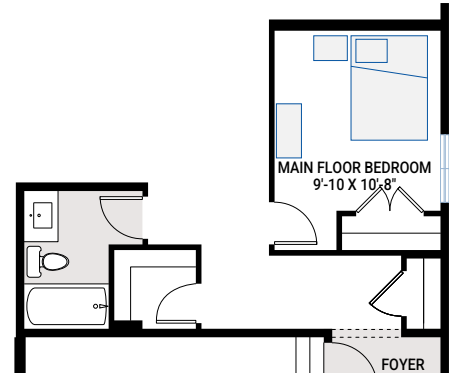
FLOORPLAN OPTIONS



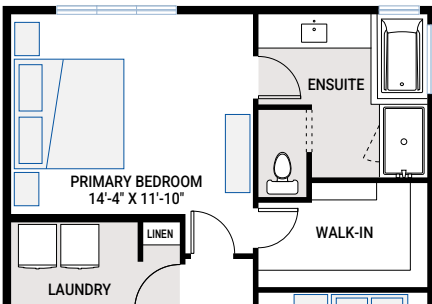
OPTION #2A
Alternate Kitchen
 - revised kitchen layout
 - additional side window added



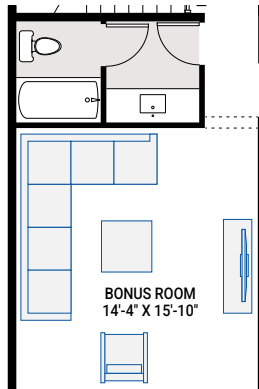
OPTION #2B
Alternate Kitchen
 - revised kitchen layout



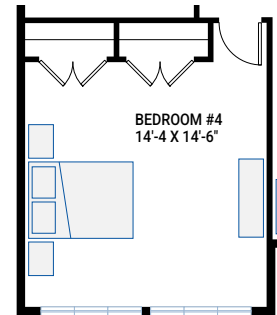
OPTION #2C
Main Floor Bedroom and Full Bathroom
 - Flex Room becomes bedroom with closet
 - Flex Room windows revised for bedroom
 - Option #6H not available with this option



OPTION #3A
Alternate Ensuite

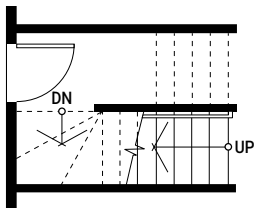


OPTION #3B
Alternate Main Bath
 - Main Bath with separate vanity area

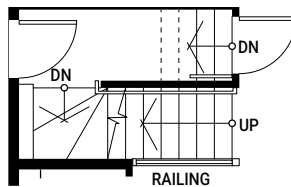


OPTION #3C
Fourth Bedroom
 - window configuration varies with elevation
 - Note: if Option #3B (Alternate Main Bathroom) is selected, Bedroom #4 depth is reduced 12"

OPTION #4A
9'-0" Upper Floor Ceiling
 - all Upper Floor windows to be increased in height
 - subject to maximum bylaw height restrictions

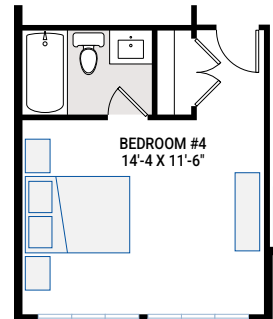


Partial Basement Plan



Partial Main Floor Plan

OPTION #1D
Exterior Side Entry to Basement
 - Subject to site specific grading — may not be available due to grade conditions
 - not available with Option #6B, Basement Stairwell Window.



OPTION #3D
Fourth Bedroom Suite
 - Note: if Option #3B (Alternate Main Bathroom) is selected, Bedroom #4 depth is reduced 12"