
THE PAXON



CANADIANA A1



FARMHOUSE A2



MODERN A3



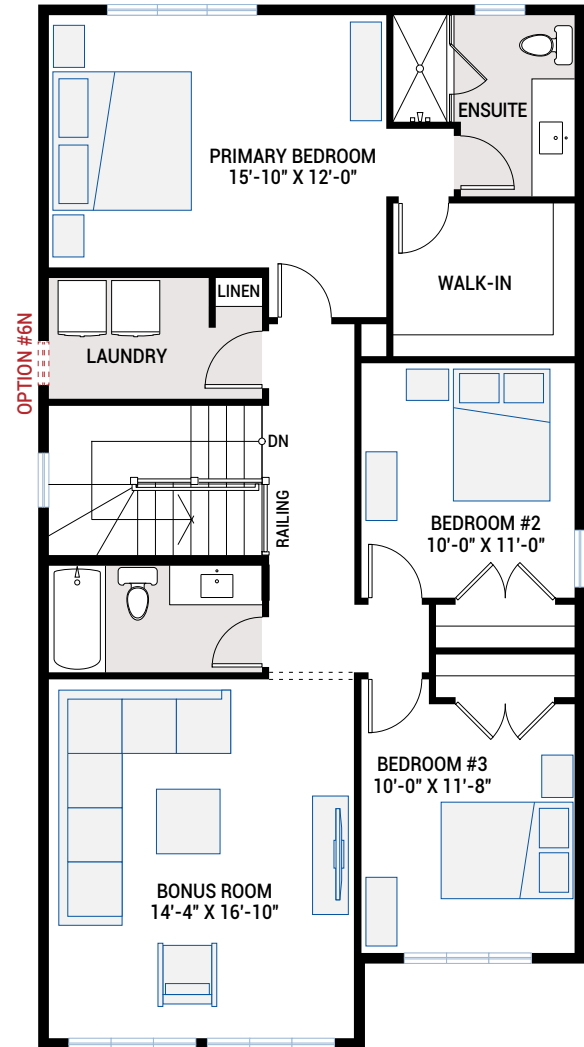
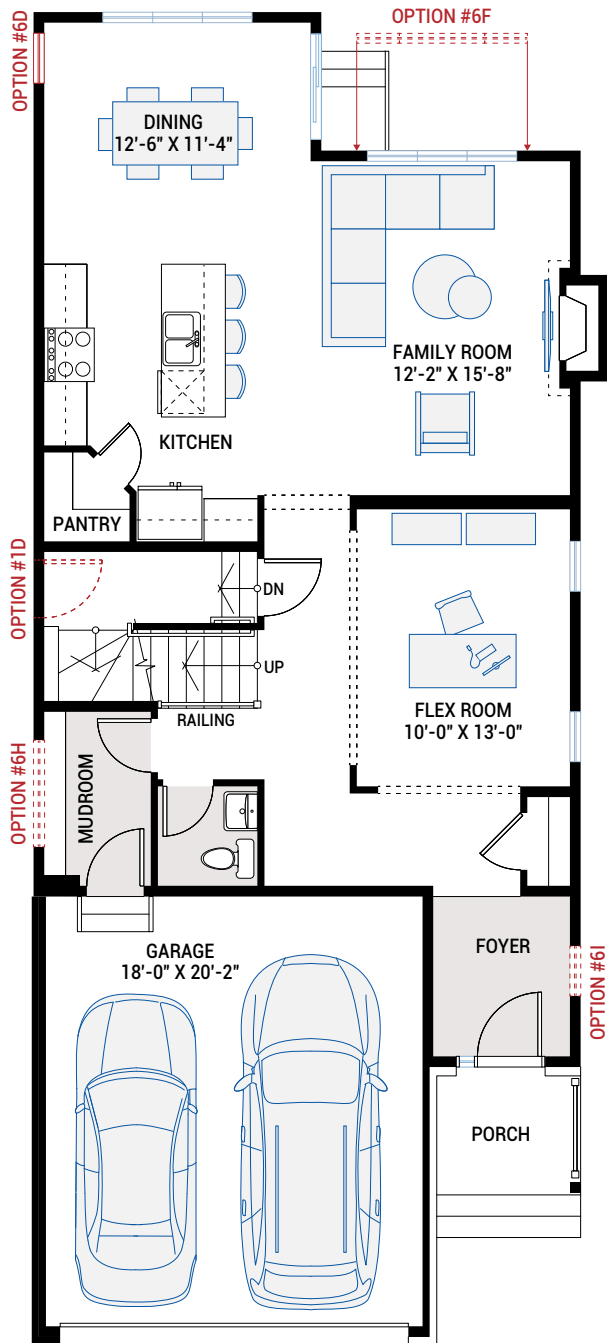
CANADIANA A4

MAIN FLOOR

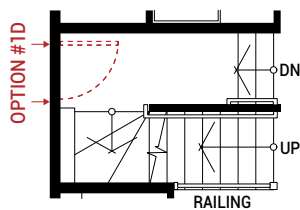
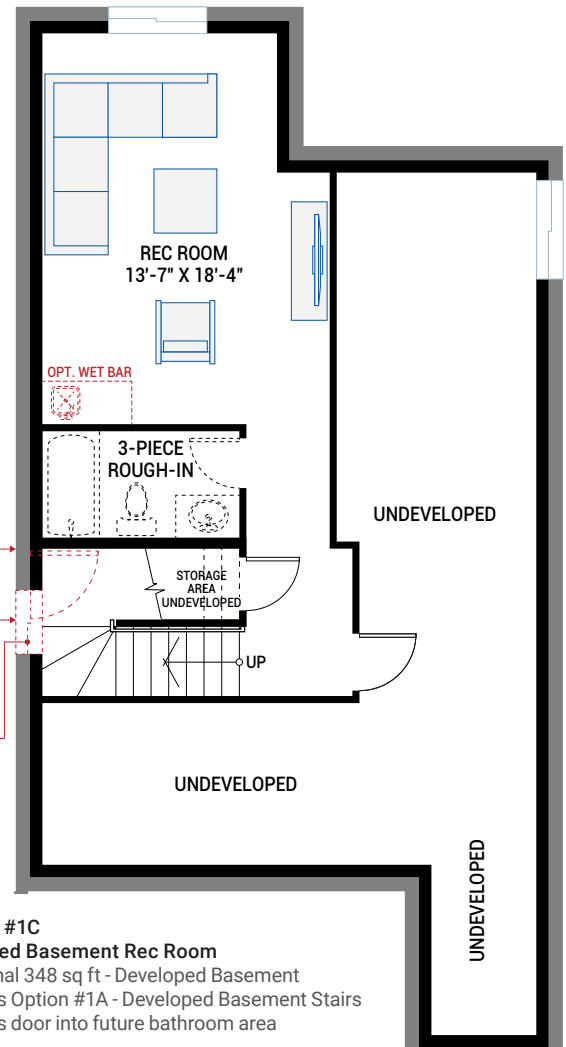
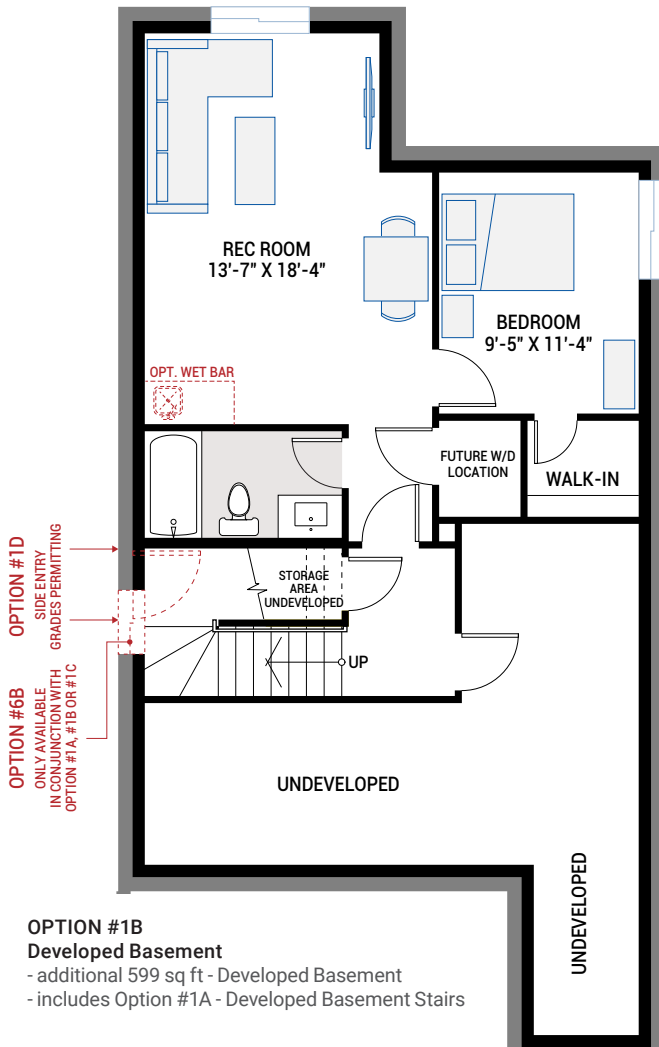
1,067 SQ FT

UPPER FLOOR

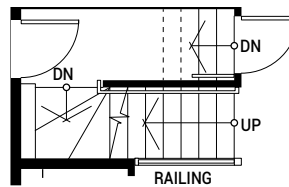
1,229 SQ FT



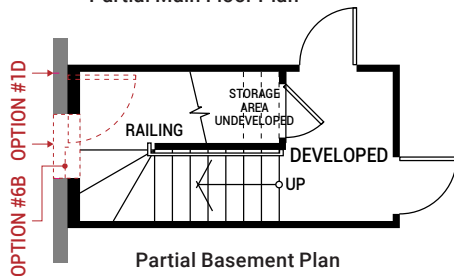
BASEMENT OPTIONS



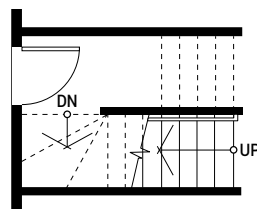
Partial Main Floor Plan



Partial Main Floor Plan



Partial Basement Plan

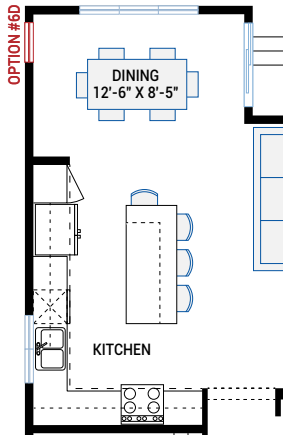


Partial Basement Plan

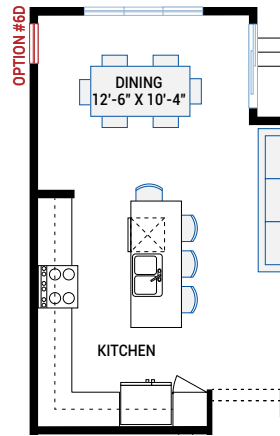
OPTION #4B
9'-0" Basement Ceiling
 - add 2 risers to the bottom of basement stairs

OPTION #1D
Exterior Side Entry to Basement
 - Subject to site specific grading — may not be available due to grade conditions
 - not available with Option #6B, Basement Stairwell Window.

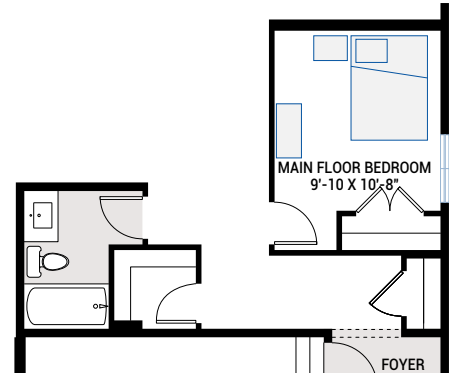
FLOORPLAN OPTIONS



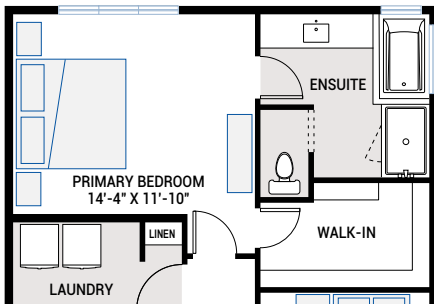
OPTION #2A
Alternate Kitchen
- revised kitchen layout
- additional side window added



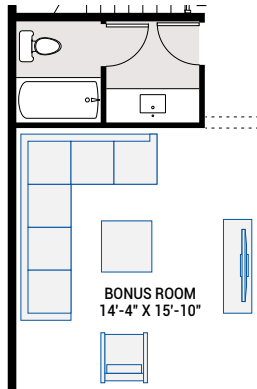
OPTION #2B
Alternate Kitchen
- revised kitchen layout



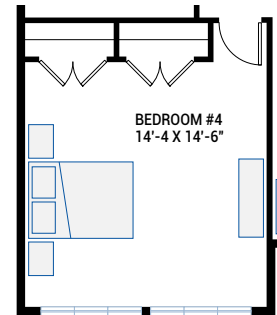
OPTION #2C
Main Floor Bedroom and Full Bathroom
- Flex Room becomes bedroom with closet
- Flex Room windows revised for bedroom
- Option #6H not available with this option



OPTION #3A
Alternate Ensuite

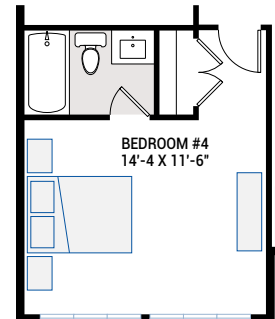


OPTION #3B
Alternate Main Bath
- Main Bath with separate vanity area



OPTION #3C
Fourth Bedroom
- window configuration varies with elevation
- Note: if Option #3B (Alternate Main Bathroom) is selected, Bedroom #4 depth is reduced 12"

OPTION #4A
9'-0" Upper Floor Ceiling
- all Upper Floor windows to be increased in height
- subject to maximum bylaw height restrictions



OPTION #3D
Fourth Bedroom Suite
- Note: if Option #3B (Alternate Main Bathroom) is selected, Bedroom #4 depth is reduced 12"