

---

# THE PALMA

---



FARMHOUSE



CRAFTSMAN

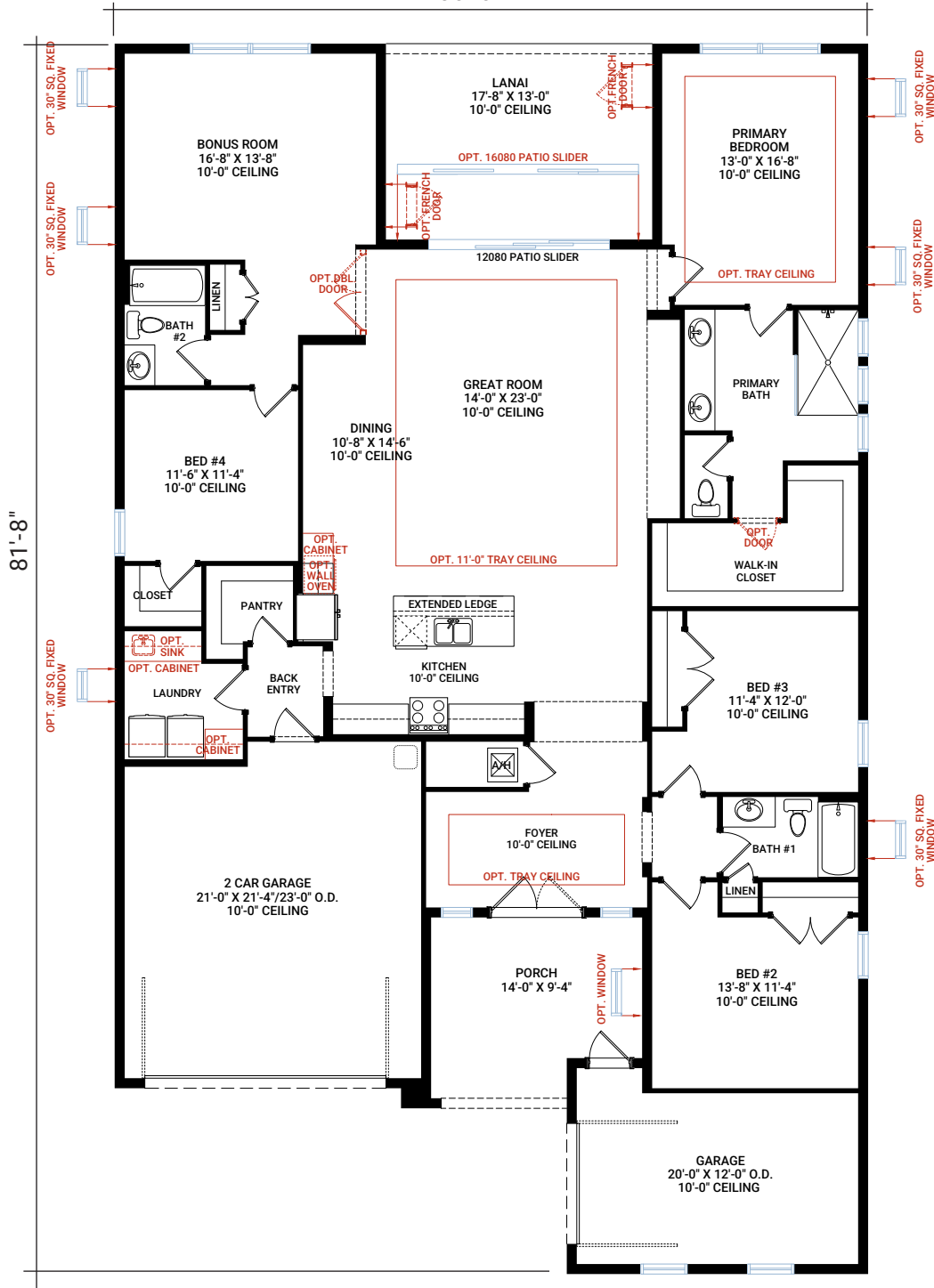


COASTAL

# MAIN FLOOR

2,606 SQ FT

50'-0"



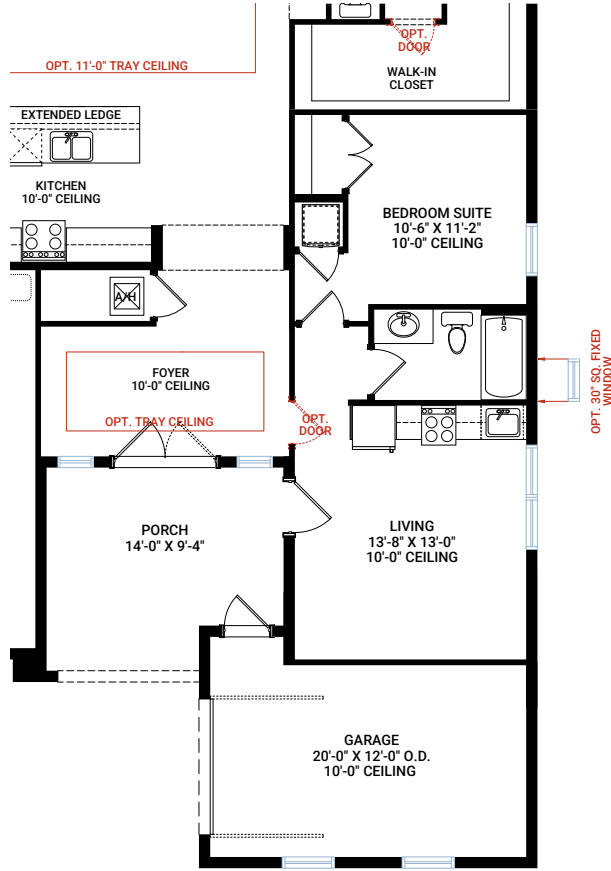
LIVING SPACE	2,606 SQ FT
GARAGE	714 SQ FT
FRONT PORCH	134 SQ FT
LANAI	230 SQ FT
<b>TOTAL UNDER ROOF</b>	<b>3,684 SQ FT</b>

THE PALMA

2,606 SQ FT | 4-5 BED | 3-4 BATH

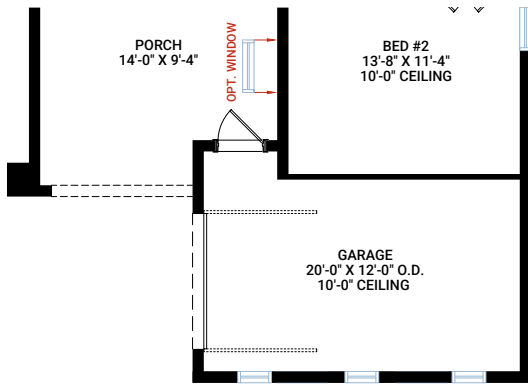
**CARDEL**  
HOMES

# FLOORPLAN OPTIONS

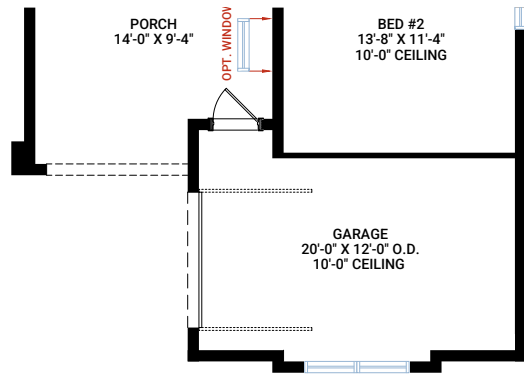


Optional Suite

# ELEVATIONS



ELEVATION B – COASTAL



ELEVATION C – FARMHOUSE  
- adds 7 sq ft