
THE PALMER



SHINGLE S1



RUSTIC MODERN S2



MODERN PRAIRIE S3



FARMHOUSE S4



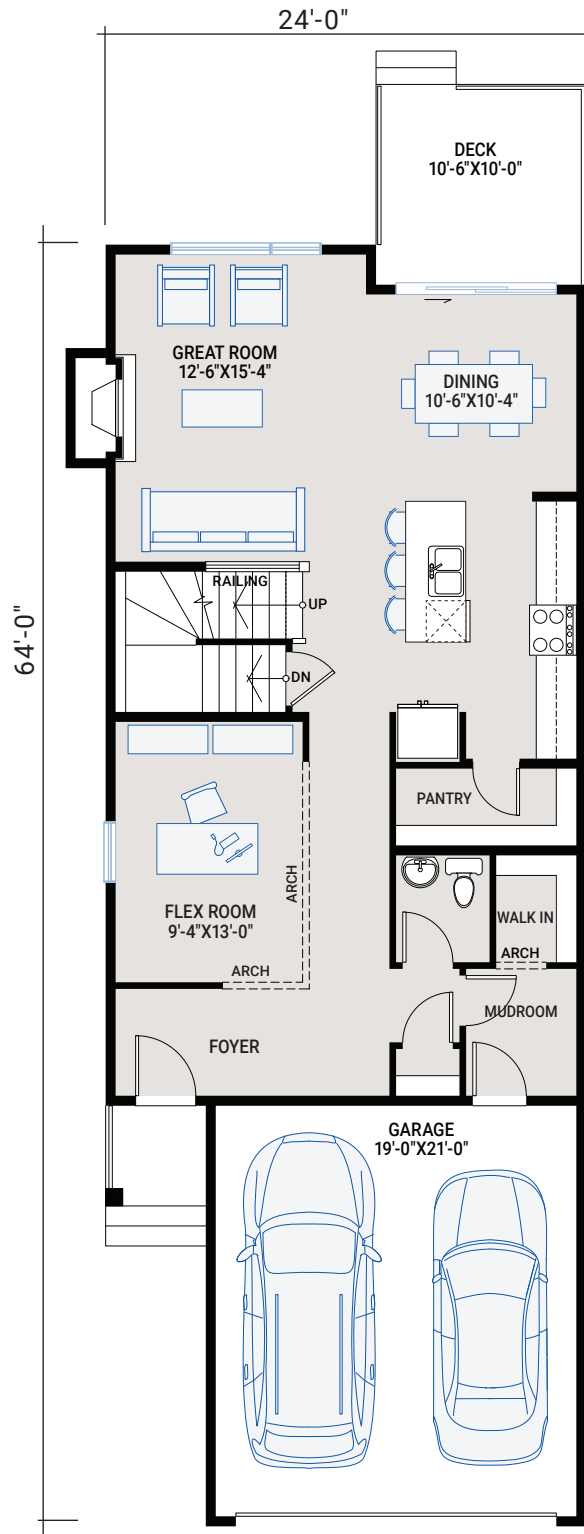
SHAWNEE PARK

2,100 SQ FT | 3 BED | 2.5 BATH

CARDEL
HOMES

MAIN FLOOR

1,011 SQ FT



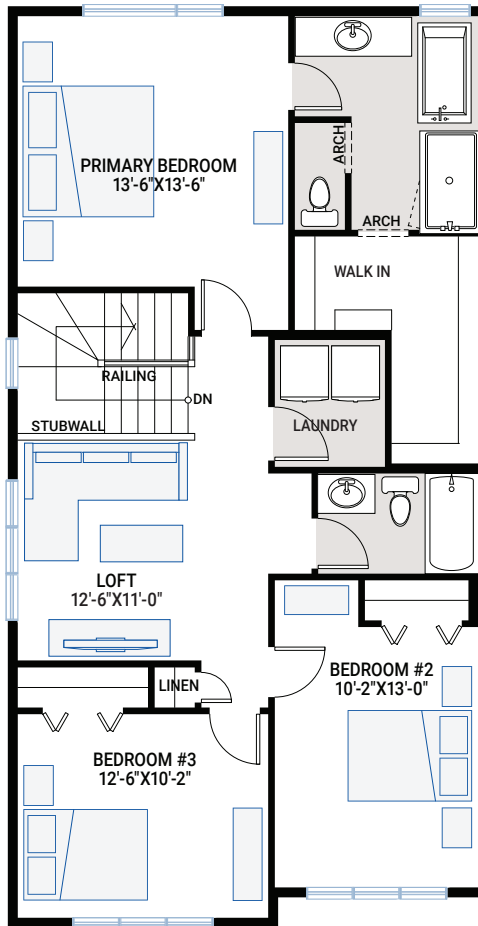
THE PALMER

2,100 SQ FT | 3 BED | 2.5 BATH

CARDEL
HOMES

UPPER FLOOR

1,089 SQ FT

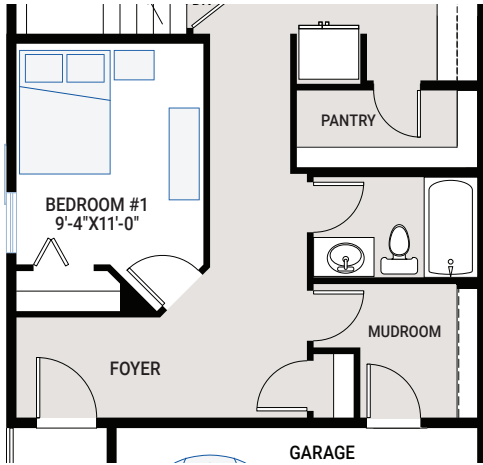


SHAWNEE PARK

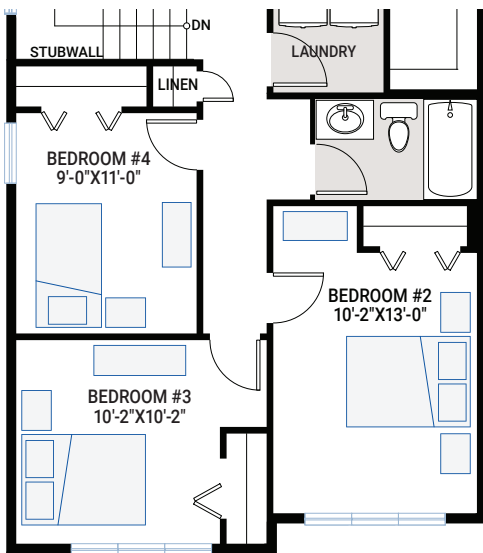
THE PALMER

CARDEL
HOMES

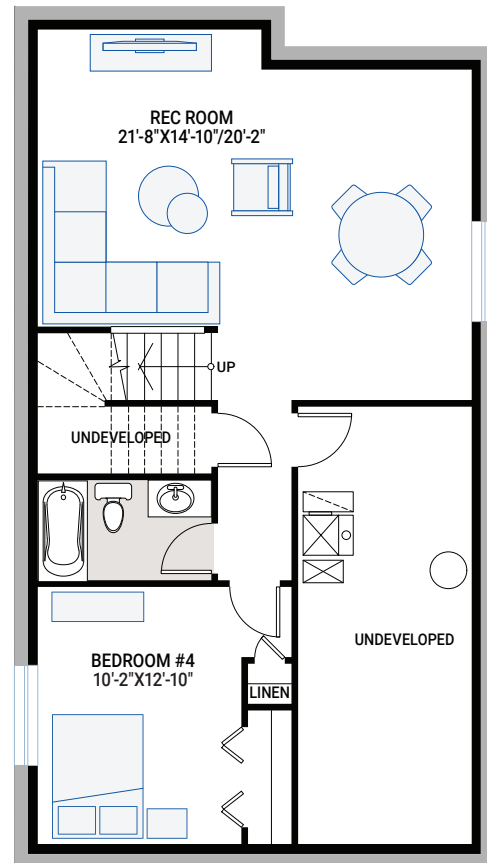
FLOORPLAN OPTIONS



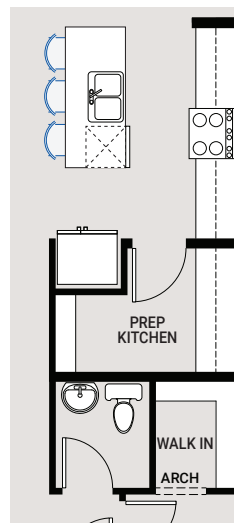
OPTION #03B
Main Floor Bedroom and Bathroom
- no additional sq ft



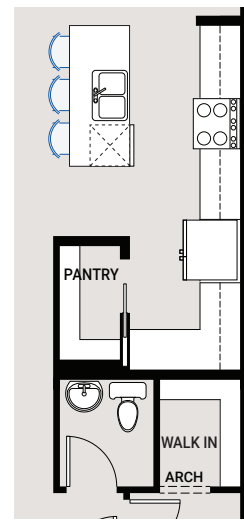
OPTION #04A
Alternate Upper Floor Fourth Bedroom
- no additional sq ft
- replace loft with fourth Bedroom



OPTION #99
Developed Basement
- adds 719 sq ft



OPTION #02A
Alternate Prep Kitchen
- no additional sq ft
- additional cabinetry added



OPTION #02B
Alternate Kitchen
- no additional sq ft
- additional cabinetry added