
THE NOLAN



CANADIANA A1



FARMHOUSE A2



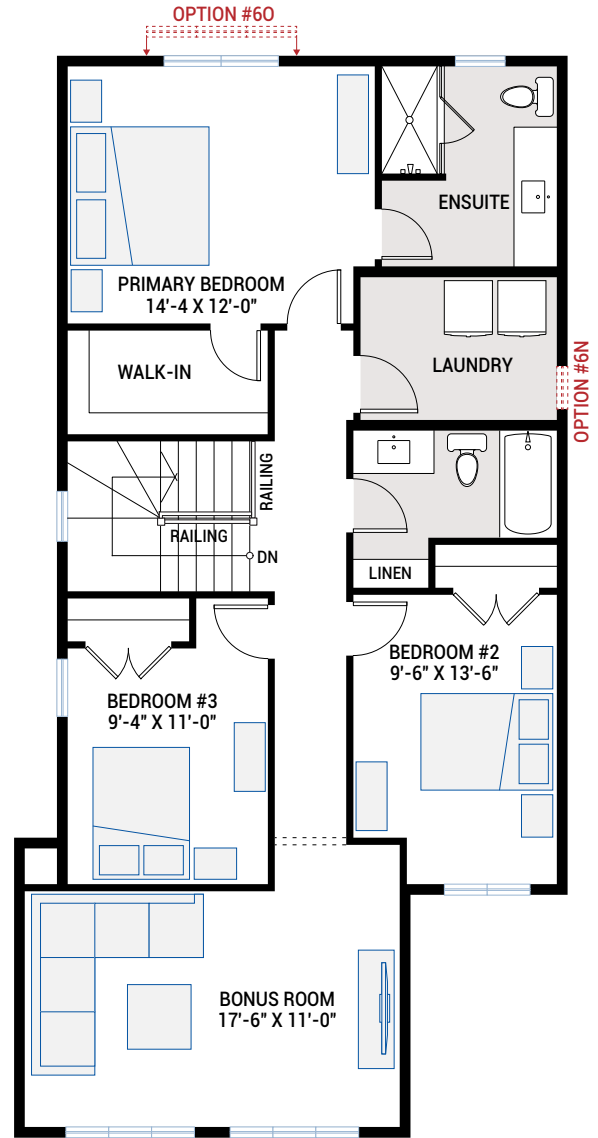
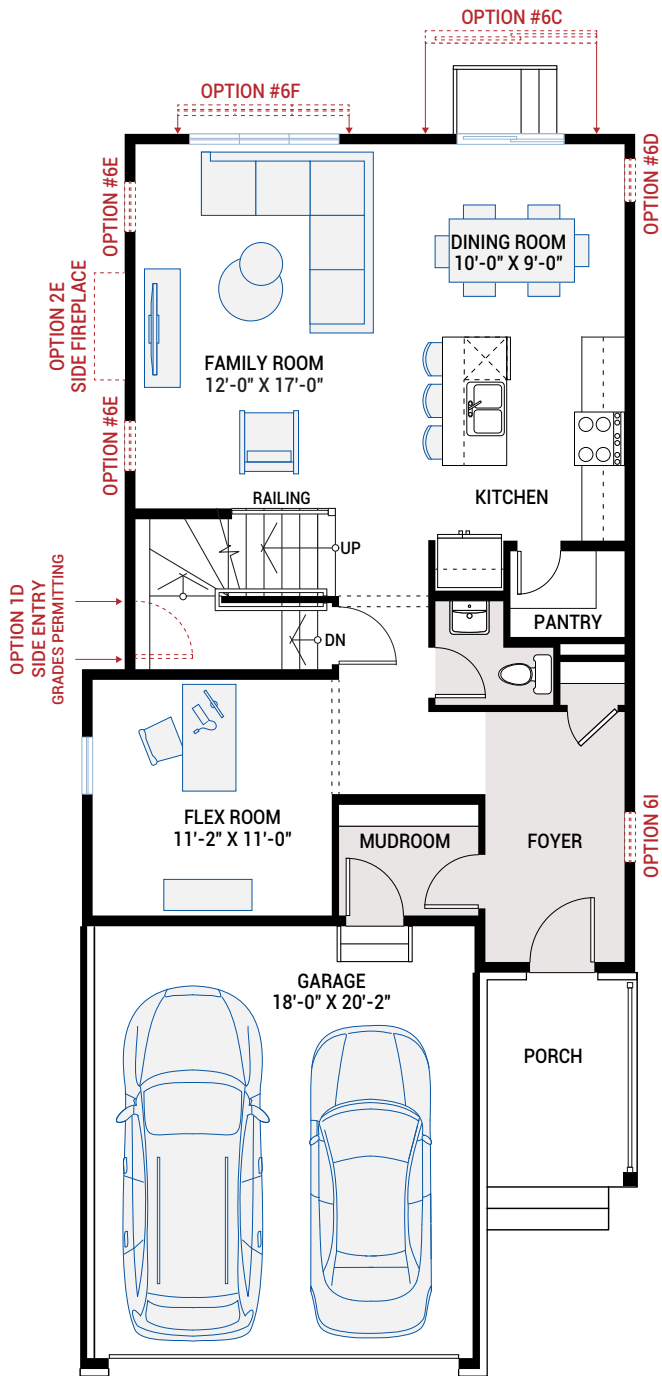
MODERN A3

MAIN FLOOR

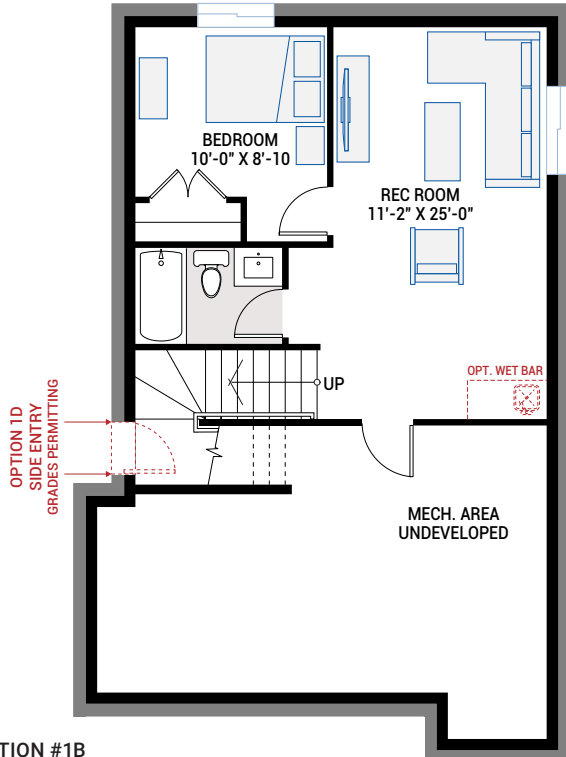
935 SQ FT

UPPER FLOOR

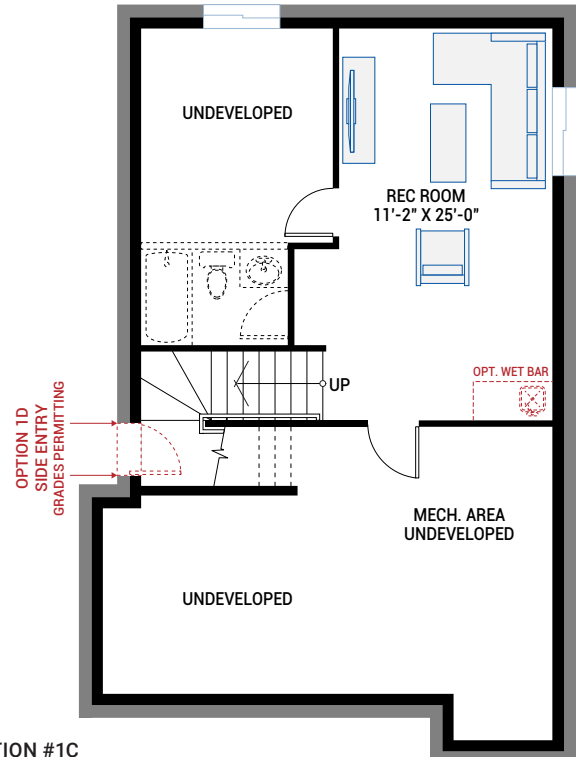
1,161 SQ FT



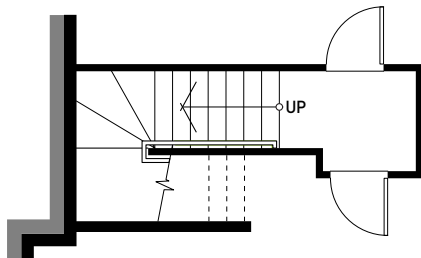
BASEMENT OPTIONS



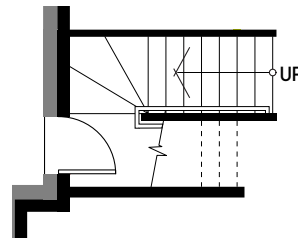
OPTION #1B
Developed Basement
 - additional 491 sq ft Developed Basement
 - Includes Option #1A - Developed Basement Stairs



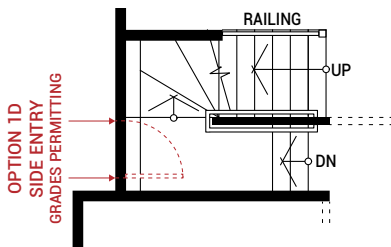
OPTION #1C
Developed Basement Rec Room
 - additional 304 sq ft
 - Includes Option #1A - Developed Basement Stairs



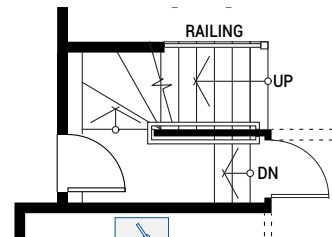
Partial Basement Plan



Partial Basement Plan



Partial Main Floor Plan



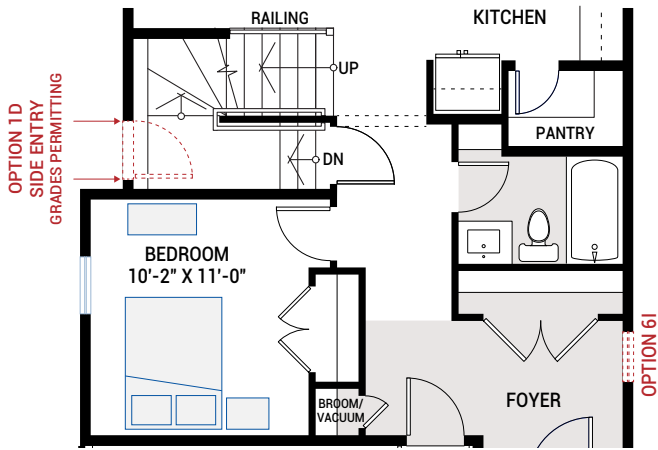
Partial Main Floor Plan

OPTION #1A
Developed Basement Stairs
 - adds 37 sq ft Basement landing

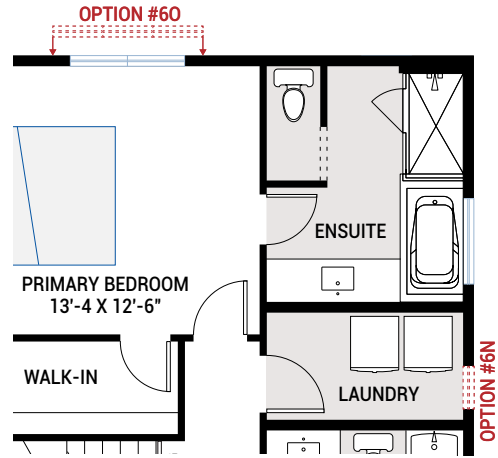
OPTION #1D
Exterior Side Entry to Basement
 - subject to site-specific lot grading, may not be available due to grade conditions.

OPTION #4B
9'-0" Basement Ceiling
 - add 2 risers to the bottom of basement stairs

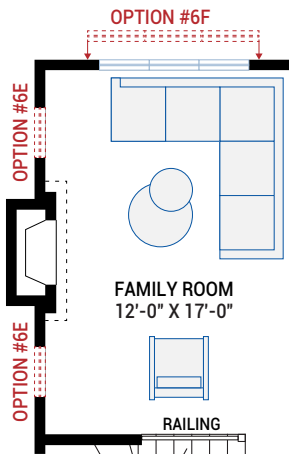
FLOORPLAN OPTIONS



OPTION #2C
Main Floor Bedroom and Full Bath

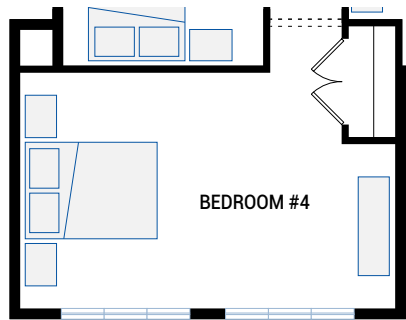


OPTION #3A
Alternate Ensuite
- window moves to side and changed to transom
- window configuration varies with elevation

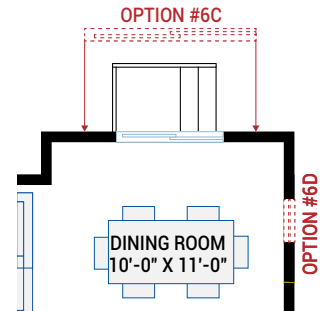


OPTION #2E
Family Room Side Fireplace
- additional 7 sq ft

OPTION #4A
9'-0" Upper Floor Ceiling
- all Upper Floor windows to be increased in height
- subject to maximum bylaw height restrictions



OPTION #3C
Fourth Bedroom
- bedroom dimensions vary with elevation
- window configuration varies with elevation



OPTION #5C
Extended Dining
- additional 24 sq ft
- full foundation below