

---

# THE NOLAN

---



CANADIANA A1



FARMHOUSE A2



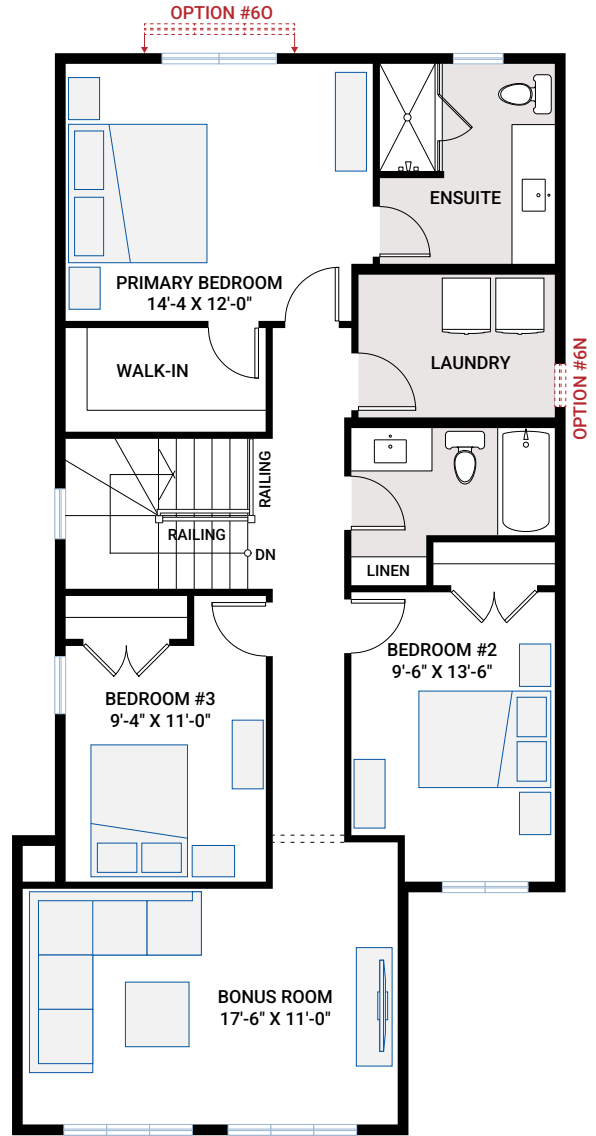
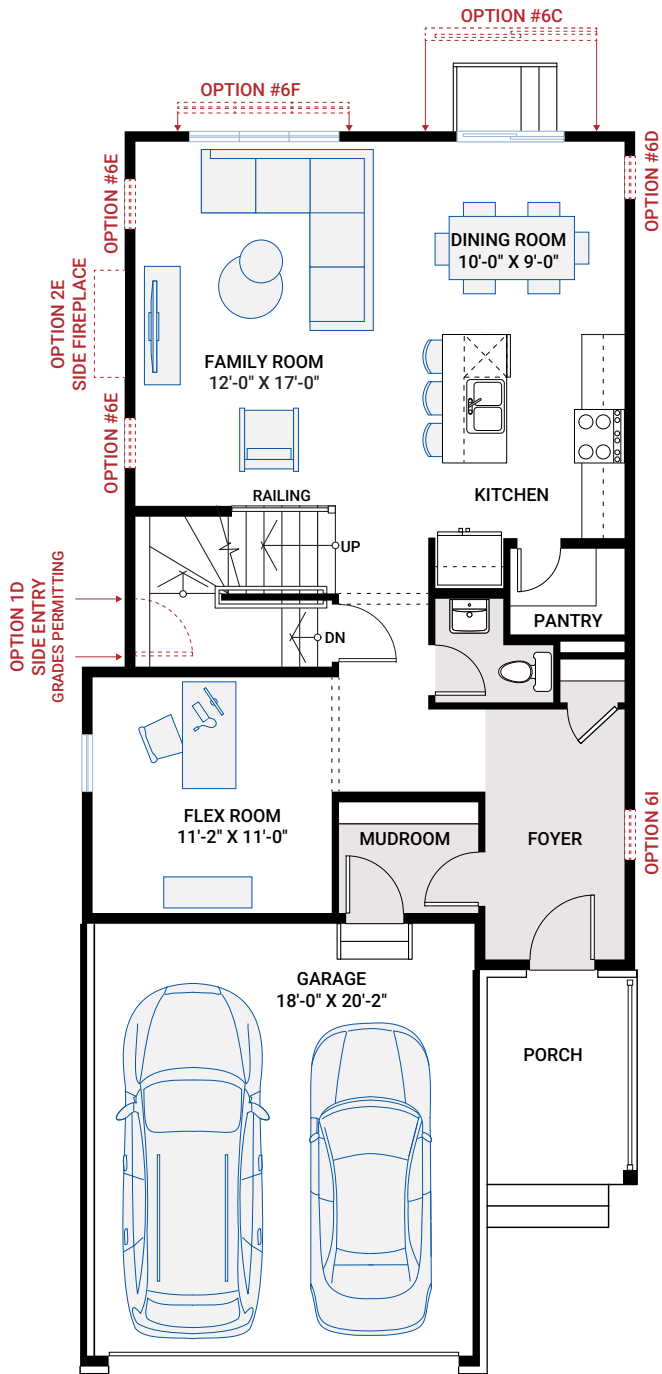
MODERN A3

# MAIN FLOOR

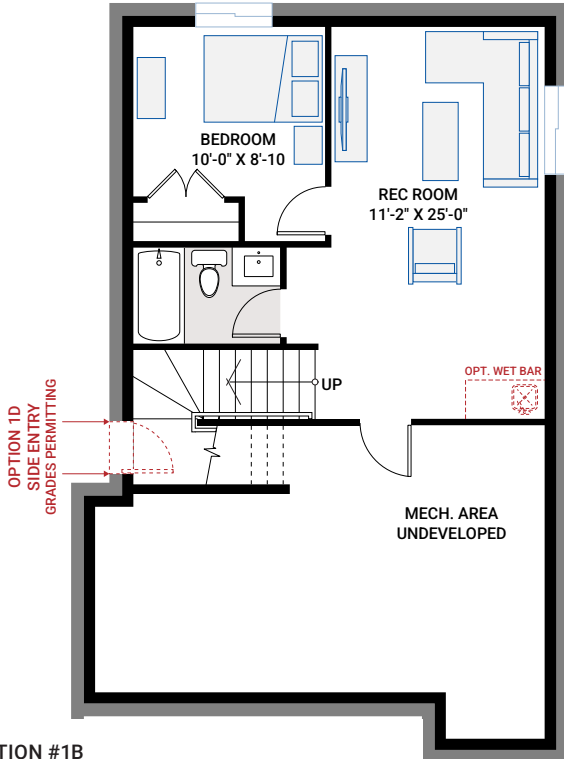
935 SQ FT

# UPPER FLOOR

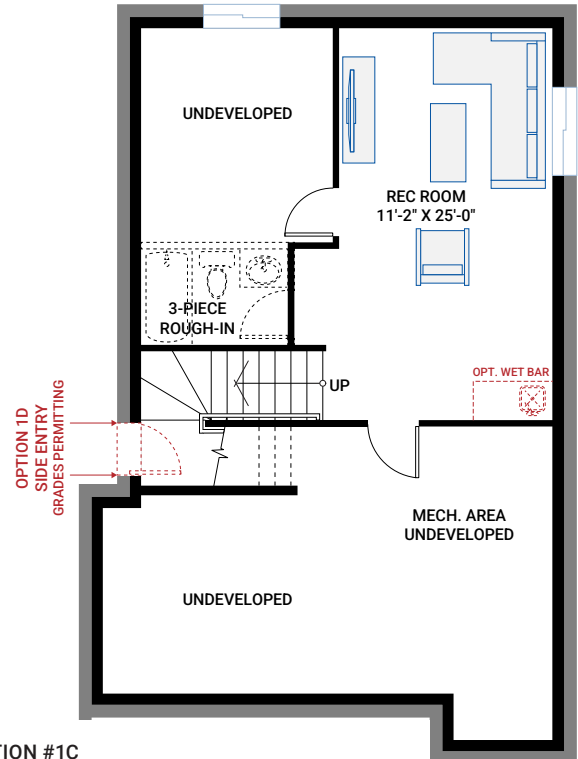
1,161 SQ FT



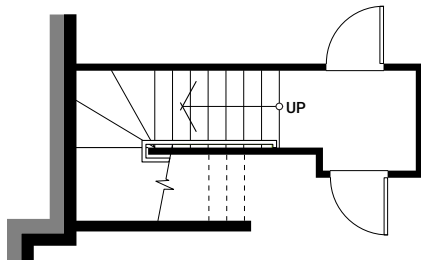
# BASEMENT OPTIONS



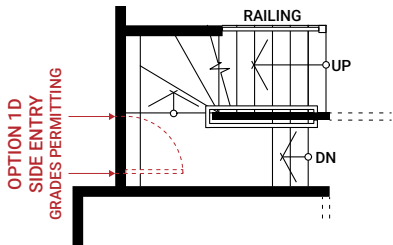
**OPTION #1B**  
**Developed Basement**  
 - additional 491 sq ft Developed Basement  
 - Includes Option #1A - Developed Basement Stairs



**OPTION #1C**  
**Developed Basement Rec Room**  
 - additional 304 sq ft  
 - Includes Option #1A - Developed Basement Stairs

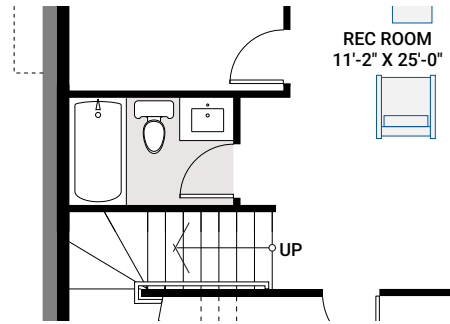


Partial Basement Plan



Partial Main Floor Plan

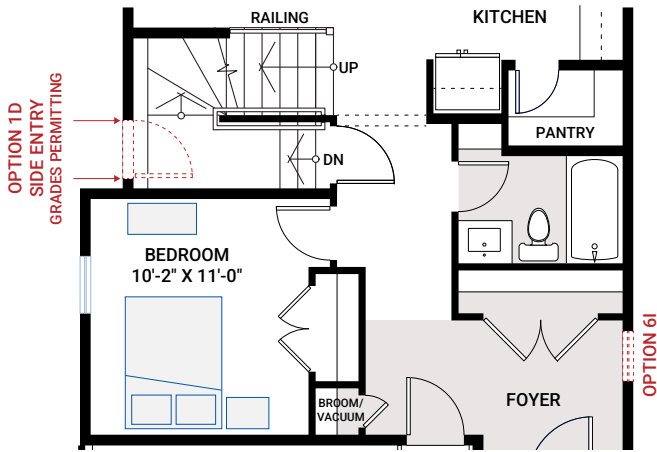
**OPTION #1A**  
**Developed Basement Stairs**  
 - adds 37 sq ft Basement landing



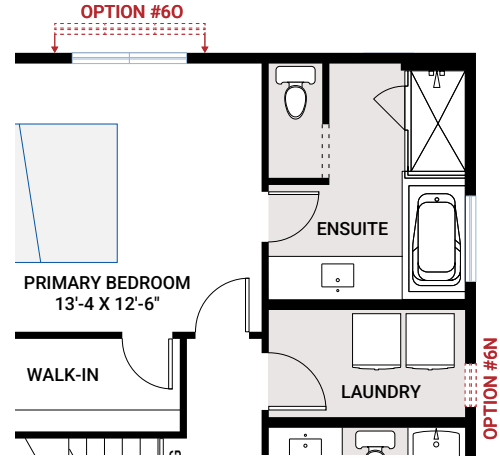
**OPTION #1F**  
**Developed Basement Bathroom**  
 - only available with Option #1C  
 - adds 48 sq ft to Developed Basement

**OPTION #4B**  
**9'-0" Basement Ceiling**  
 - add 2 risers to the bottom of basement stairs

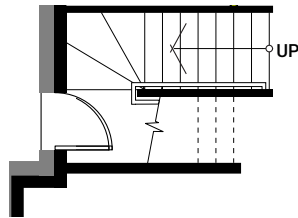
# FLOORPLAN OPTIONS



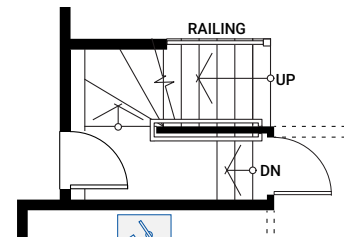
**OPTION #2C**  
Main Floor Bedroom and Full Bath



**OPTION #3A**  
Alternate Ensuite  
- window moves to side and changed to transom  
- window configuration varies with elevation



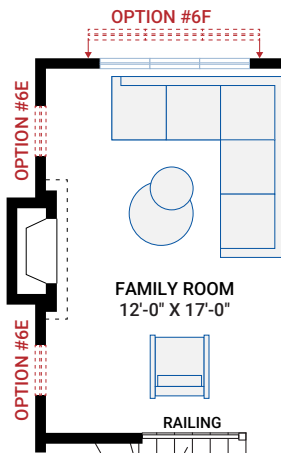
Partial Basement Plan



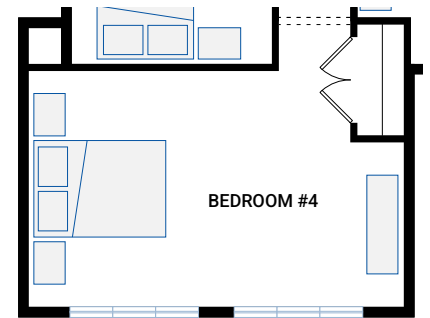
Partial Main Floor Plan

**OPTION #1D**  
Exterior Side Entry to Basement  
- subject to site-specific lot grading, may not be available due to grade conditions.

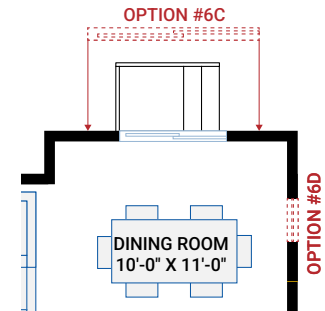
**OPTION #4A**  
9'-0" Upper Floor Ceiling  
- all Upper Floor windows to be increased in height  
- subject to maximum bylaw height restrictions



**OPTION #2E**  
Family Room Side Fireplace  
- additional 7 sq ft



**OPTION #3C**  
Fourth Bedroom  
- bedroom dimensions vary with elevation  
- window configuration varies with elevation



**OPTION #5C**  
Extended Dining  
- additional 24 sq ft  
- full foundation below