
🕒 QUICK POSSESSION



URBAN MOUNTAIN - SL3
EXTERIOR COLOURS ARE NOT EXACT

MIDTOWN 2 (PAIRED HOME)

FIRESIDE
347 FIRERSIDE DRIVE

1,634 SQ
FT

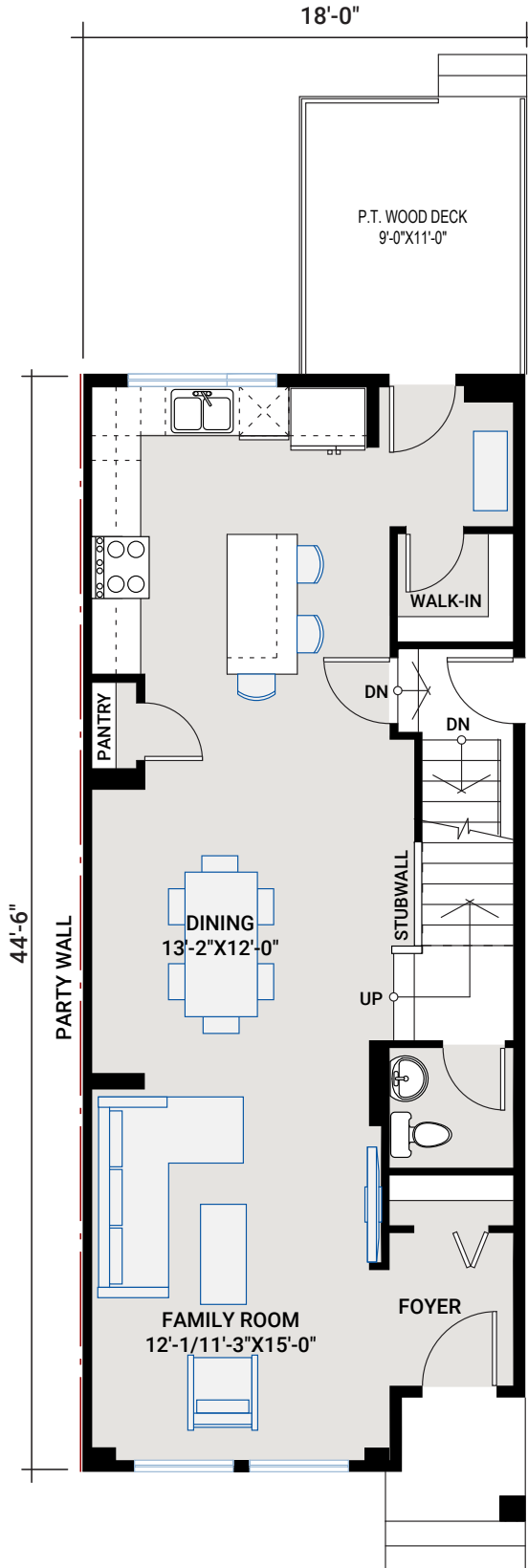
SIDE ENTRY TO
BASEMENT

UPPER FLOOR
LOFT

9' X 11'
REAR DECK

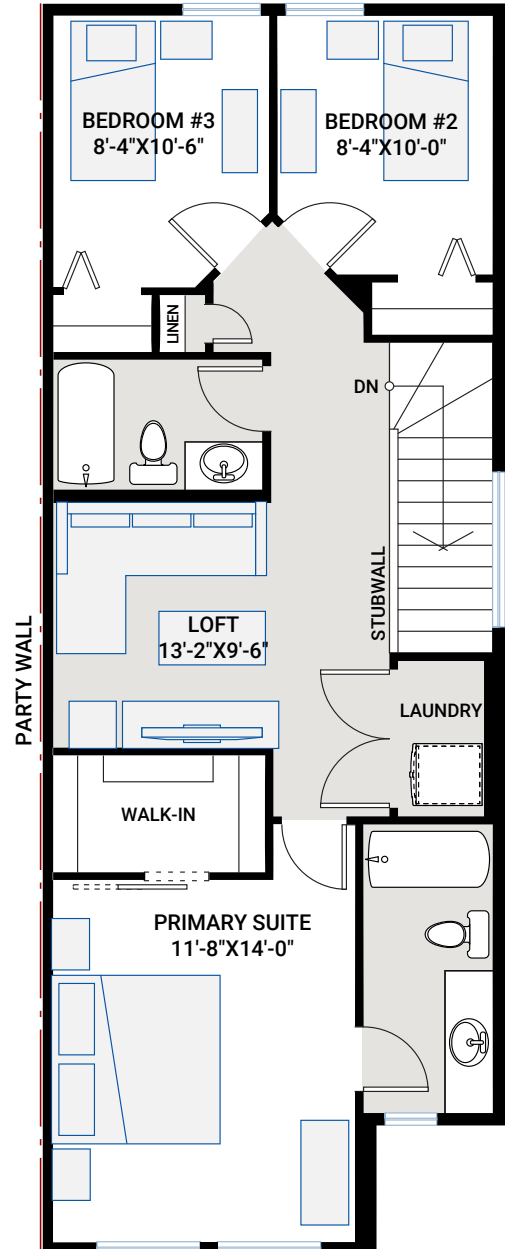
MAIN FLOOR

786 SQ FT

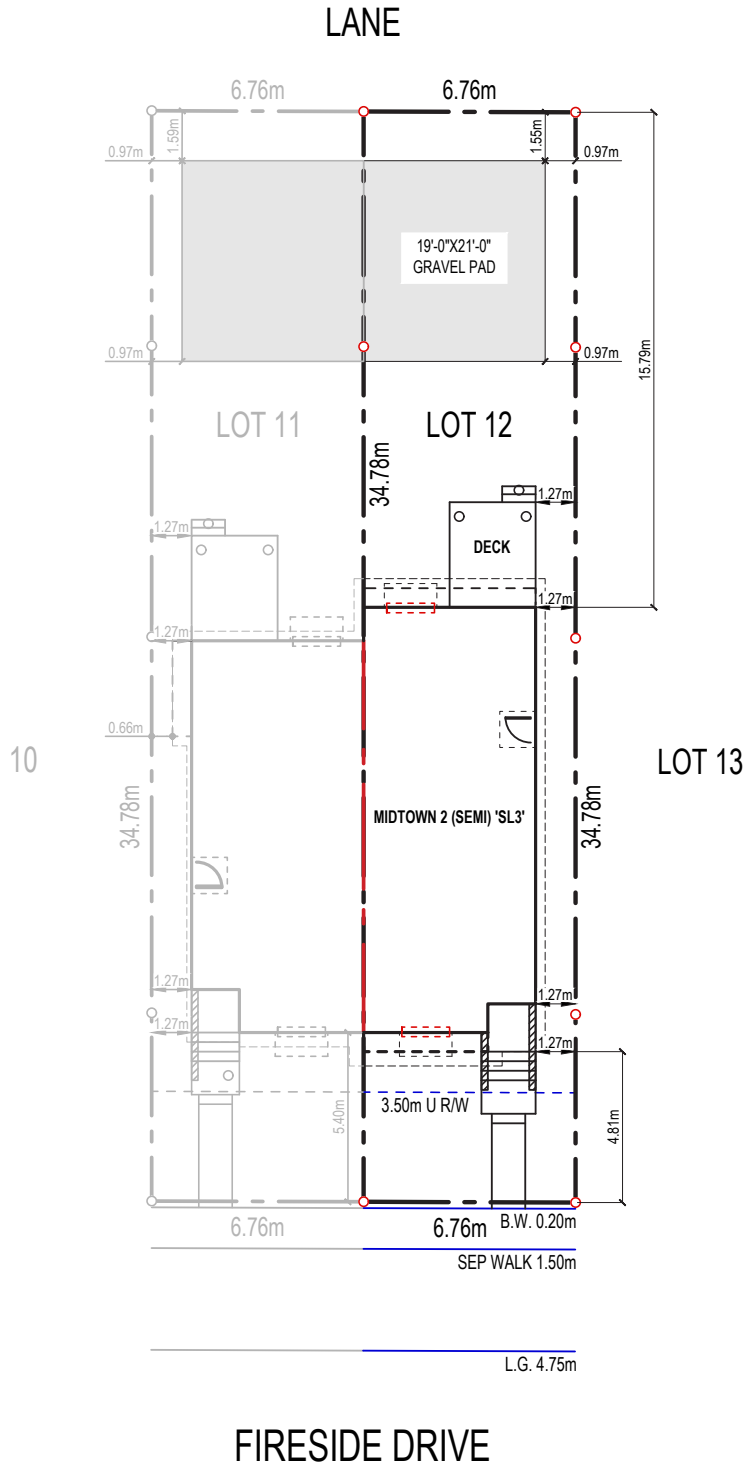


UPPER FLOOR

848 SQ FT



PLOT PLAN



INCLUDED FEATURES

- 9' main floor ceiling
- 9' basement foundation walls
- Upper floor loft
- Separate side entrance to basement
- LVP flooring throughout main floor
- LVP flooring in upper floor hallway and loft
- Tile flooring in bathrooms
- Custom cabinetry package including:
 - Soft close hardware
 - Dovetail drawer construction
 - Matte black hardware
- Stainless steel appliances:
 - Samsung French door counter-depth refrigerator
 - Samsung electric range
 - Samsung smart dishwasher
 - Whirlpool microwave
 - Aura Lucca 30" wall-mount chimney hood
- Blanco-granite double bowl kitchen sink in Coal Black
- Upgraded railing
- Upgraded wall tile package
- Quartz countertops throughout
- Upgraded Delta Trinsic kitchen faucet in matte black
- Moen plumbing faucets and fixtures in matte black
- Double sinks in primary ensuite
- Barn door on primary walk-in closet
- Pot lighting
- Samsung front load washer and dryer
- Heat recovery ventilation system

INTERIOR COLOUR PALETTE

