

---

# THE MCKINLEY

---



MODERN PRAIRIE AP1



MODERN FARMHOUSE AP2



URBAN MOUNTAIN AP3

**ALPINE PARK**

3,133 SQ FT | 4 BED | 3.5 BATH

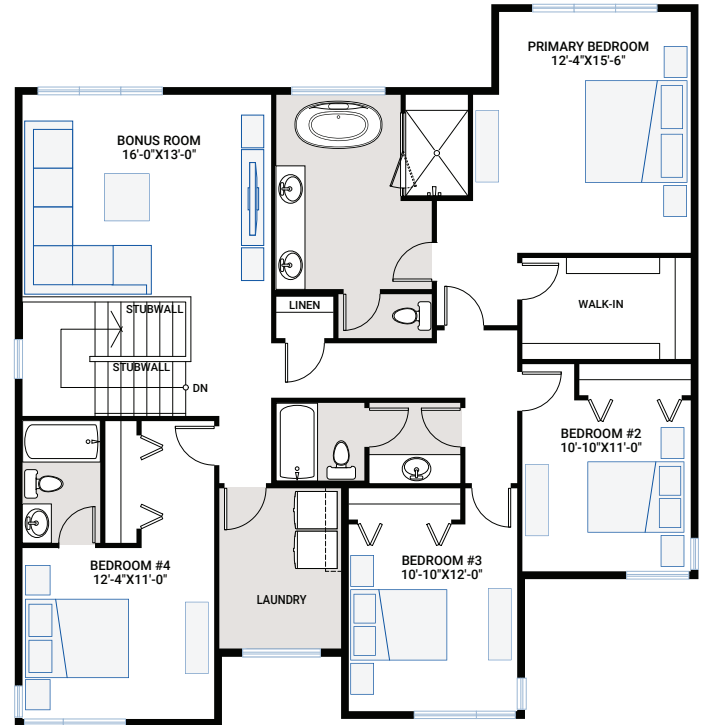
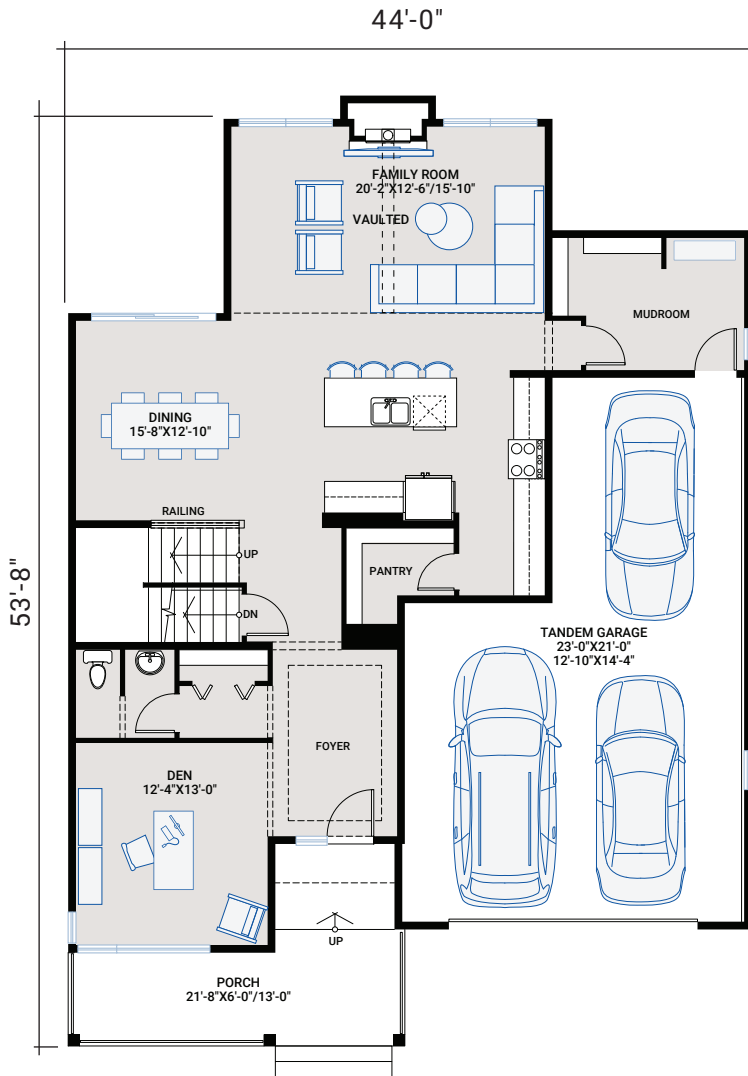
**CARDEL**  
HOMES

## MAIN FLOOR

1,397 SQ FT

## UPPER FLOOR

1,736 SQ FT



THE MCKINLEY

3,133 SQ FT | 4 BED | 3.5 BATH

**CARDEL**  
HOMES

The floor plan shows a second floor with the following areas:

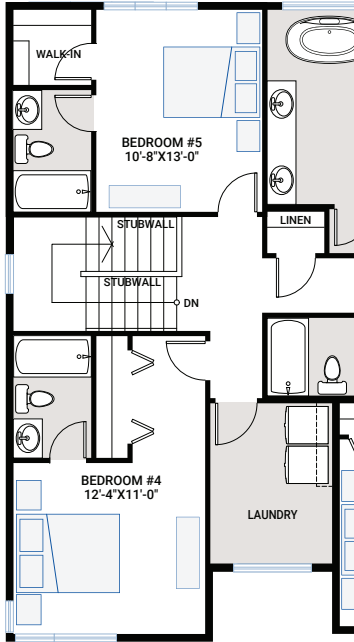
- REC ROOM** (18'-10" X 20'-0"): A large open area with a blue L-shaped sofa, a blue coffee table, and two blue chairs. A linen closet is located near the bathroom.
- BEDROOM #5** (9'-8" X 12'-4"): Contains a blue bed, a blue dresser, and a blue chair. A linen closet is located near the bathroom.
- Bathroom**: Includes a toilet, a sink, and a bathtub. A linen closet is located near the bathtub.
- UNDEVELOPED MECH**: A mechanical room containing two electrical panels and a circular vent.
- UNDEVELOPED**: A large area at the bottom of the floor plan, currently unused.
- Stairs**: A set of stairs with a door labeled "P" leading to the first floor.

Floor plan of the second floor. The plan includes a central 'LIVING / DINING' area, a bedroom labeled 'BEDROOM #5' (9'-8" x 12'-4") with a bed and dresser, a bathroom with a sink, toilet, and bathtub, and a staircase labeled 'UP'. Several areas are marked 'UNDEVELOPED' or 'UNDEVELOPED MECH'. A 'TENT' is indicated near the bathtub. The plan is oriented with North at the top.

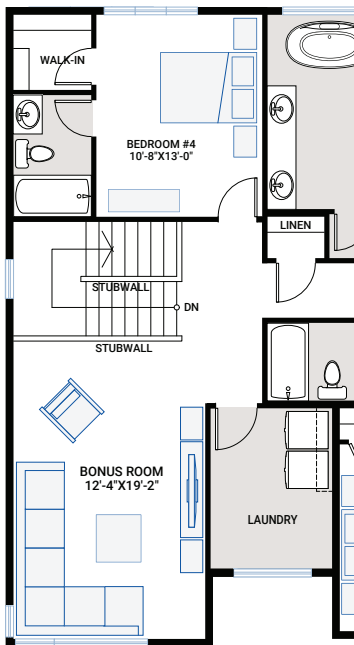
[illegible]

**CARDEL**  
HOMES

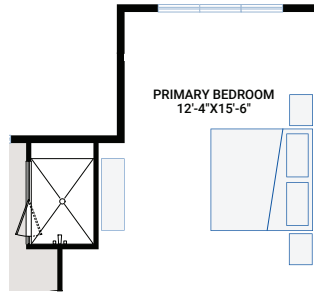
# FLOORPLAN OPTIONS



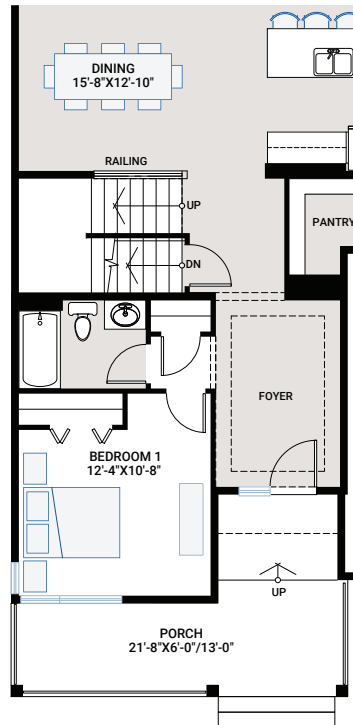
**OPTION #04B**  
**Alternate Upper Floor w/ 5th Bedroom**  
 - no additional sq ft  
 - bedroom 5 with ensuite replaces bonus room



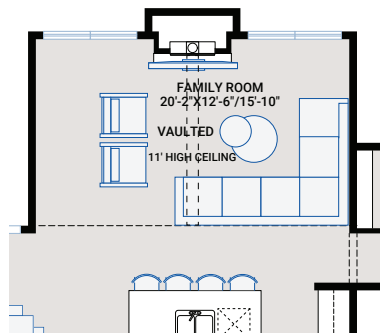
**OPTION #04C**  
**Alternate Bonus Room w/ 4th Bedroom**  
 - no additional sq ft  
 - bedroom 4 changes location with bonus room



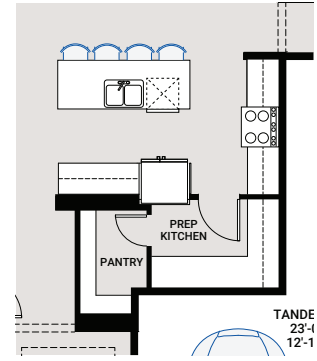
**OPTION #04A**  
**Primary Bedroom Extension**  
 - adds 21 sq ft



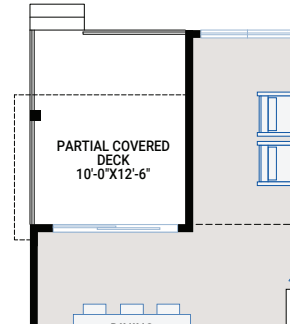
**OPTION #03A**  
**Main Floor Bedroom and Bath**  
 - no additional sq ft



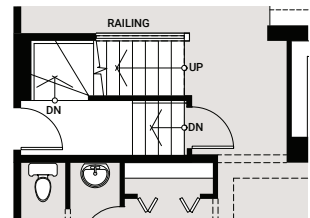
**OPTION #05B**  
**Great Room 11' High Ceilings**



**OPTION #02A**  
**Prep Kitchen**  
 - adds 6 sq ft  
 - removes 6 sq ft from garage



**OPTION #05C**  
**Partial Covered Deck**  
 - adds 10'x7'4" covered area



**OPTION #05A**  
**Exterior Side Entry to Basement**