
🕒 **QUICK MOVE-IN**



FARMHOUSE A2

THE LUCCA

1156 BRONZE AVENUE (LOT 85)

**OVERSIZED
LOT**

**FAMILY ROOM
GAS FIREPLACE**

**OVERSIZED
FOURTH BEDROOM**



2,179 SQ FT | 4 BED | 2.5 BATH

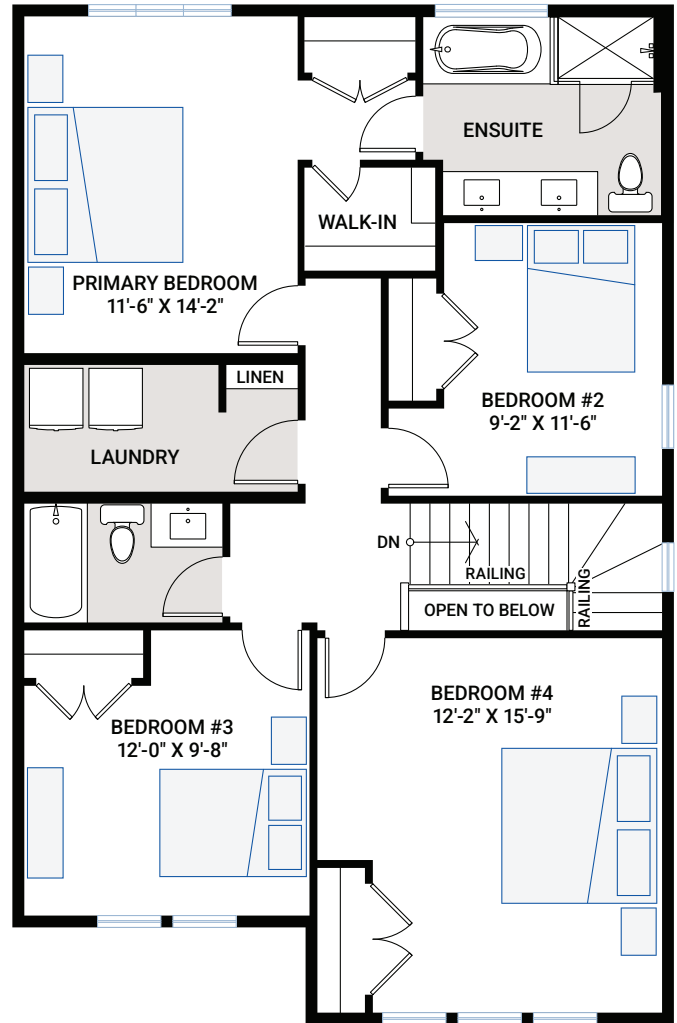
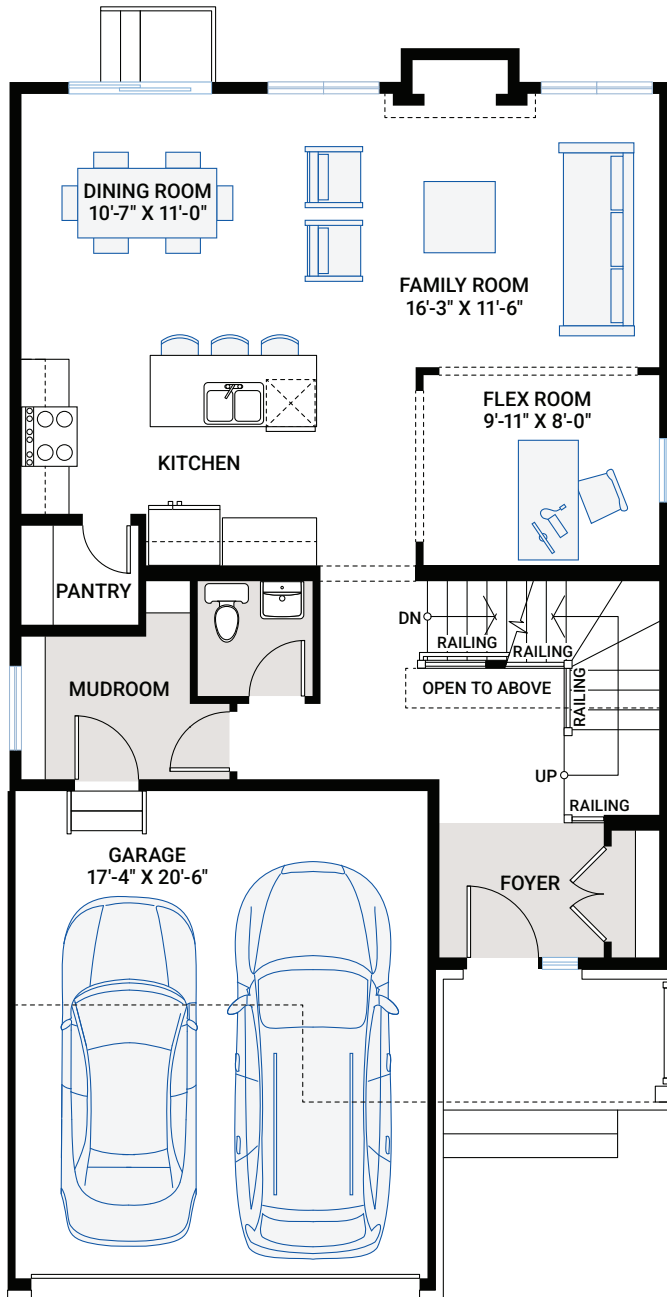
**CARDEL
HOMES**

MAIN FLOOR

929 SQ FT

UPPER FLOOR

1,145 SQ FT



FOR MORE INFORMATION CONTACT: THANG NGUYEN, New Home Consultant
thang.nguyen@cardelhomes.com | P: 343.573.2464

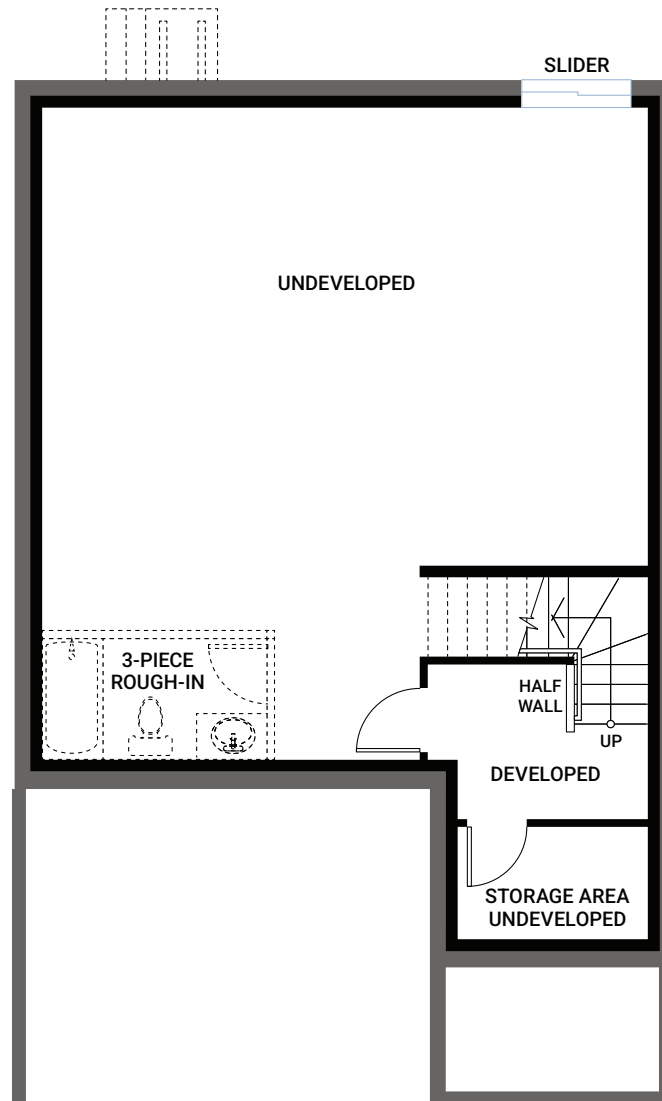


2,179 SQ FT | 4 BED | 2.5 BATH



BASEMENT

105 SQ FT



- South facing front yard
- Open concept layout
- Kitchen with walk-in pantry
- 5-piece ensuite with 2 separate closets
- Developed basement stairs ready for future addition
- Family room gas fireplace with wrap-around oak mantle
- Second floor laundry room
- Mudroom window
- Bright interior with Designer selections including:
 - Beautiful oak hardwood flooring throughout main floor and kitchen
 - Quartz in kitchen, ensuite and main bath
 - Upgraded white shaker doors throughout
 - Extended upper cabinets
 - Stainless steel chimney hood fan
 - Soft close doors and drawers with black hardware
 - Stacked subway tile pattern kitchen backsplash
 - Stacked square tile pattern in bathrooms

INTERIOR COLOUR SCHEME – 12



* All sizes are nominal. The colours represented on this page may vary from the actual product colours. Actual samples can be viewed by appointment.