

# 🕒 QUICK POSSESSION



FSCL-3

EXTERIOR COLOURS ARE NOT EXACT

**LUCCA**  
(PAIRED HOME)

**FIRESIDE**  
339 FIRESIDE DRIVE

**1,802** SQ  
FT

9' MAIN FLOOR  
CEILING

QUARTZ  
COUNTERTOPS

LVP FLOORING  
ON MAIN FLOOR

**FIRESIDE**  
OF COCHRANE

1,802 SQ FT | 3 BED | 2.5 BATH

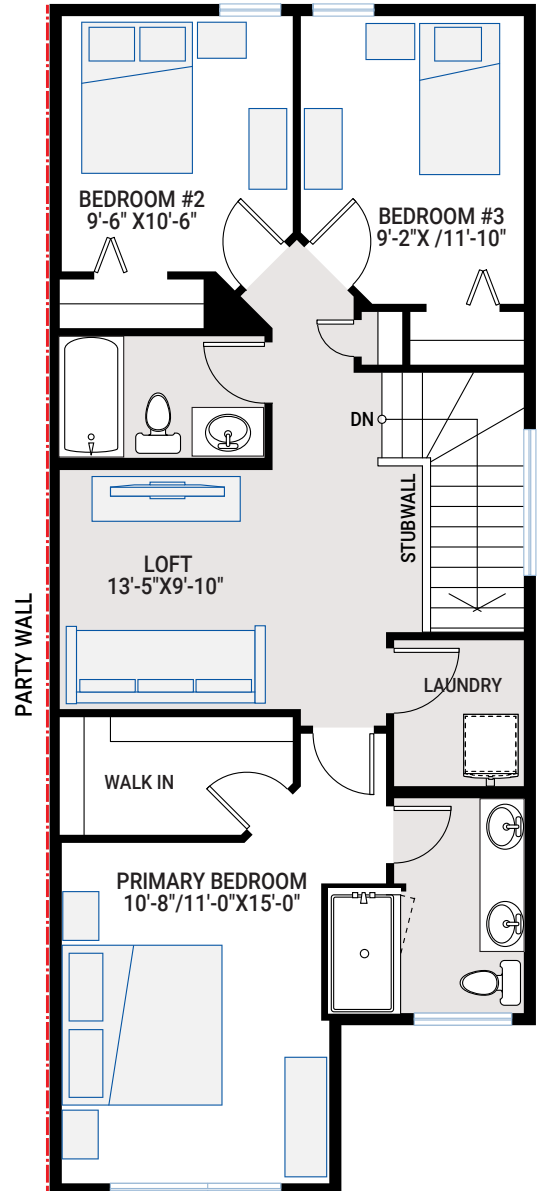
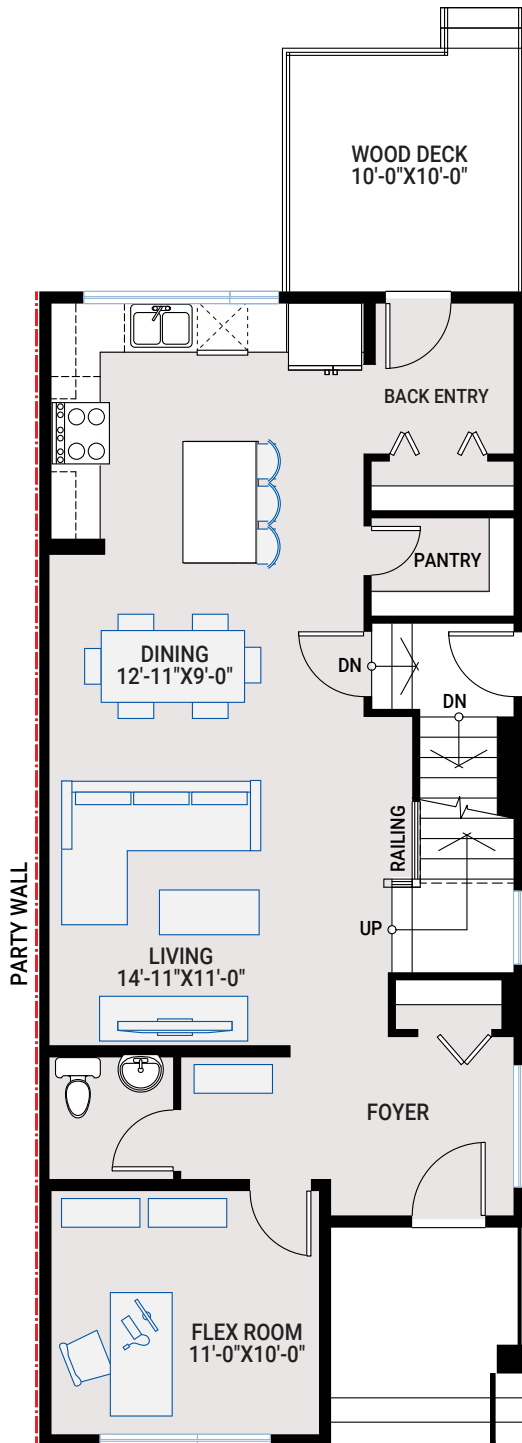
**CARDEL**  
HOMES

# MAIN FLOOR

878 SQ FT

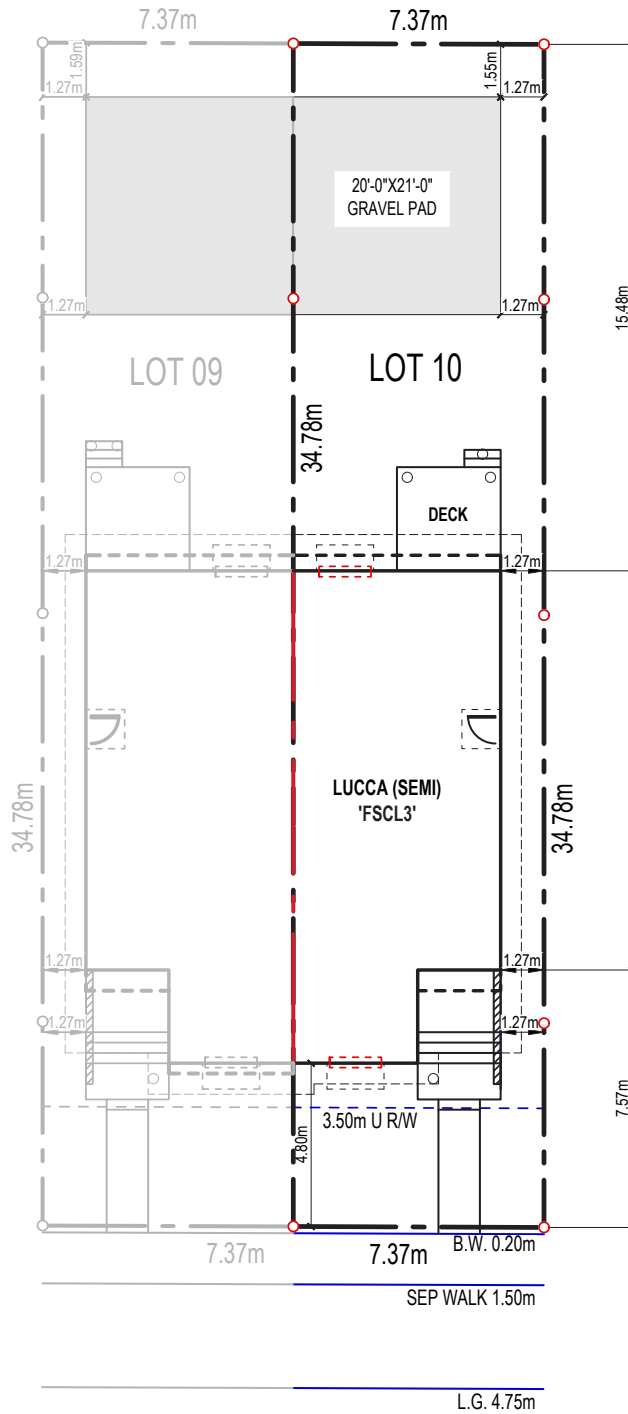
# UPPER FLOOR

924 SQ FT



# PLOT PLAN

## LANE



## FIRESIDE DRIVE

## INCLUDED FEATURES

- 9' main floor ceiling
- 9' basement foundation walls
- 10'x10' rear deck with aluminum railing
- Walk-in pantry
- Upper floor loft
- Separate side entrance to basement
- LVP flooring throughout main floor and upper floor hallway and loft
- Tile flooring in bathrooms
- Custom cabinetry package including:
  - Soft close hardware
  - Dovetail drawers
  - Matte black hardware
- Stainless steel appliances:
  - Samsung French door counter-depth refrigerator
  - Samsung electric range
  - Samsung smart dishwasher
  - Whirlpool microwave
  - Aura Lucca 30" wall-mount chimney hood
- Blanco-granite double bowl kitchen sink in Coal black
- Upgraded railing
- Upgraded wall tile package
- Quartz countertops throughout
- Upgraded Delta Trinsic kitchen faucet in matte black
- Moen plumbing faucets and fixtures in matte black
- Pot lighting
- Samsung front load washer and dryer
- Heat recovery ventilation system
- Cardel's premium spray foam attic insulation assembly
- Gas line rough-in to kitchen stove and deck
- 30-year shingles

### INTERIOR COLOUR PALETTE

