
🕒 QUICK POSSESSION



FSCL-3

EXTERIOR COLOURS ARE NOT EXACT

LUCCA (PAIRED HOME)

FIRESIDE
335 FIRESIDE DRIVE

1,814 SQ
FT

9' MAIN FLOOR
CEILING

QUARTZ
COUNTERTOPS

LVP FLOORING
ON MAIN FLOOR

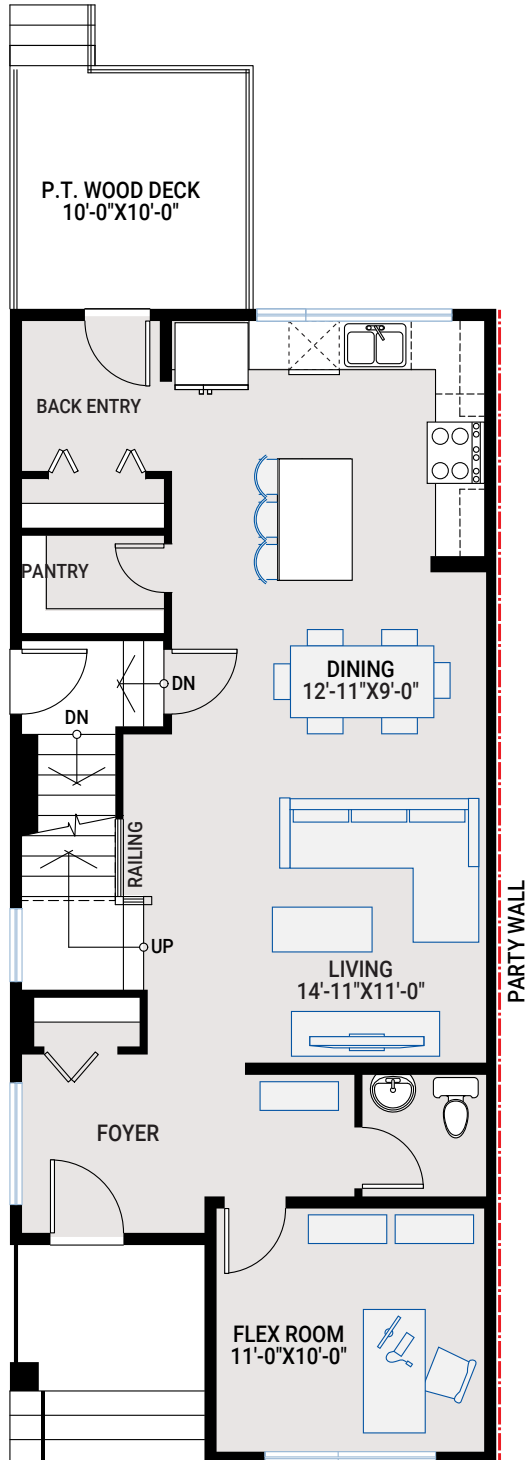
FIRESIDE
OF COCHRANE

1,814 SQ FT | 3 BED | 2.5 BATH

CARDEL
HOMES

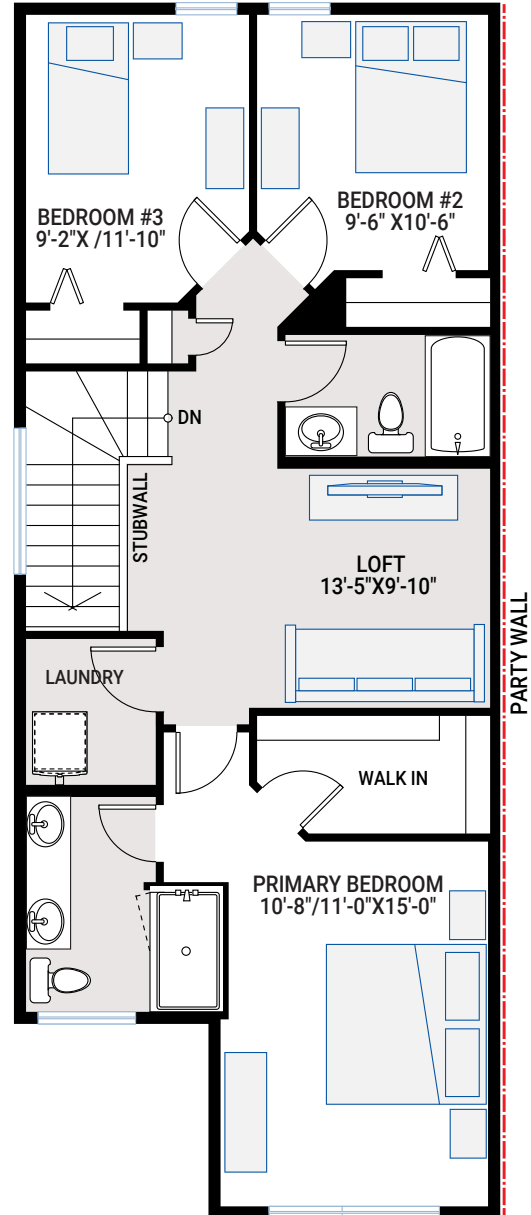
MAIN FLOOR

878 SQ FT

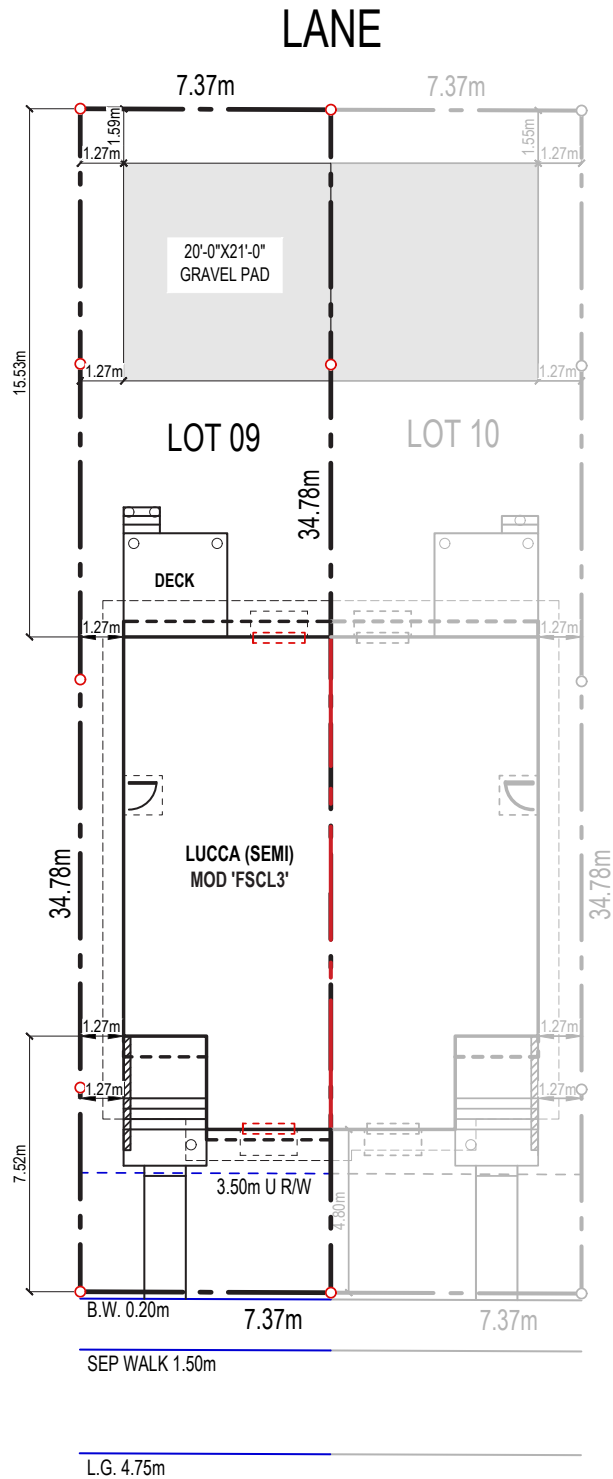


UPPER FLOOR

936 SQ FT



PLOT PLAN



INCLUDED FEATURES

- 9' main floor ceiling
- 9' basement foundation walls
- 10'x10' rear deck with aluminum railing
- Walk-in pantry
- Upper floor loft
- Separate side entrance to basement
- LVP flooring throughout main floor and upper floor hallway and loft
- Tile flooring in bathrooms
- Custom cabinetry package including:
 - Soft close hardware
 - Dovetail drawers
 - Matte black hardware
- Stainless steel appliances:
 - Samsung French door counter-depth refrigerator
 - Samsung electric range
 - Samsung smart dishwasher
 - Whirlpool microwave
 - Aura Lucca 30" wall-mount chimney hood
- Blanco-granite double bowl kitchen sink in Truffle
- Upgraded railing
- Upgraded wall tile package
- Quartz countertops throughout
- Upgraded Delta Trinsic kitchen faucet in matte black
- Moen plumbing faucets and fixtures in matte black
- Pot lighting
- Samsung front load washer and dryer
- Heat recovery ventilation system
- Cardel's premium spray foam attic insulation assembly
- Gas line rough-in to kitchen stove and deck
- 30-year shingles

INTERIOR COLOUR PALETTE

