
THE KAYA



MODERN FARMHOUSE



MODERN PRAIRIE



MODERN CONTEMPORARY

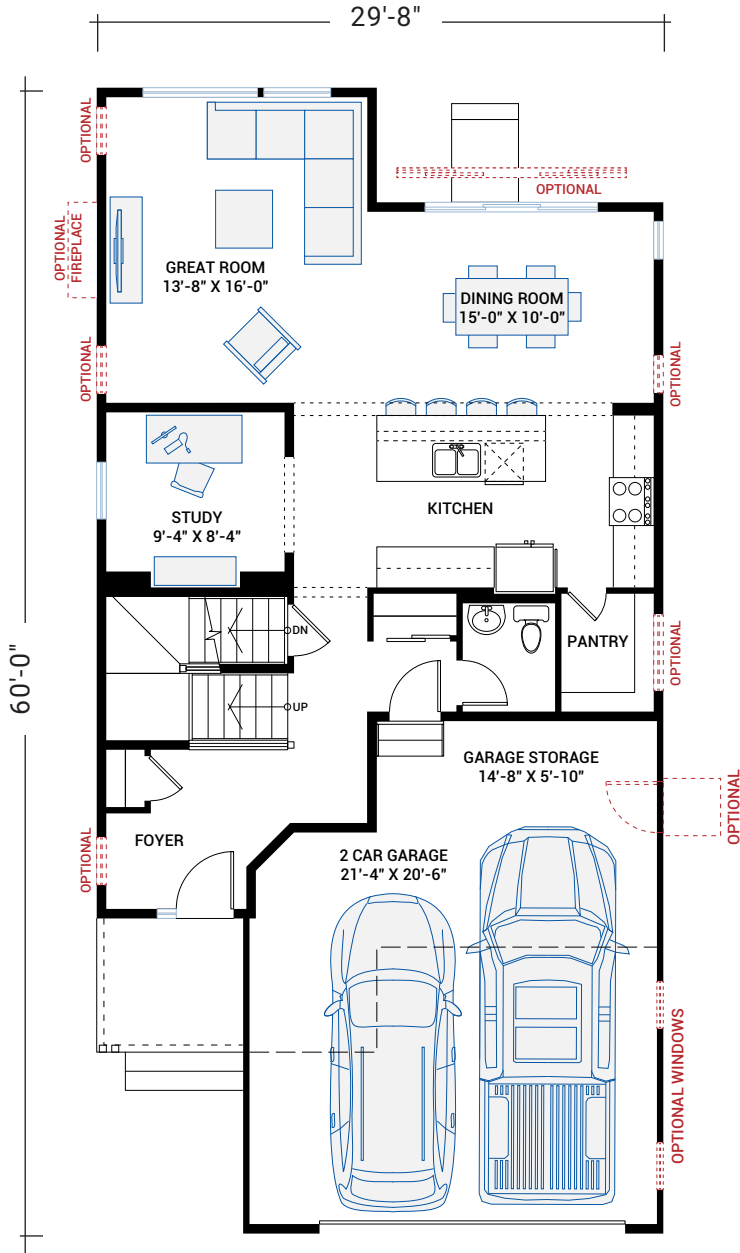
THREE HILLS

2,910 SQ FT | 4 BED | 3.5 BATH

CARDEL
HOMES

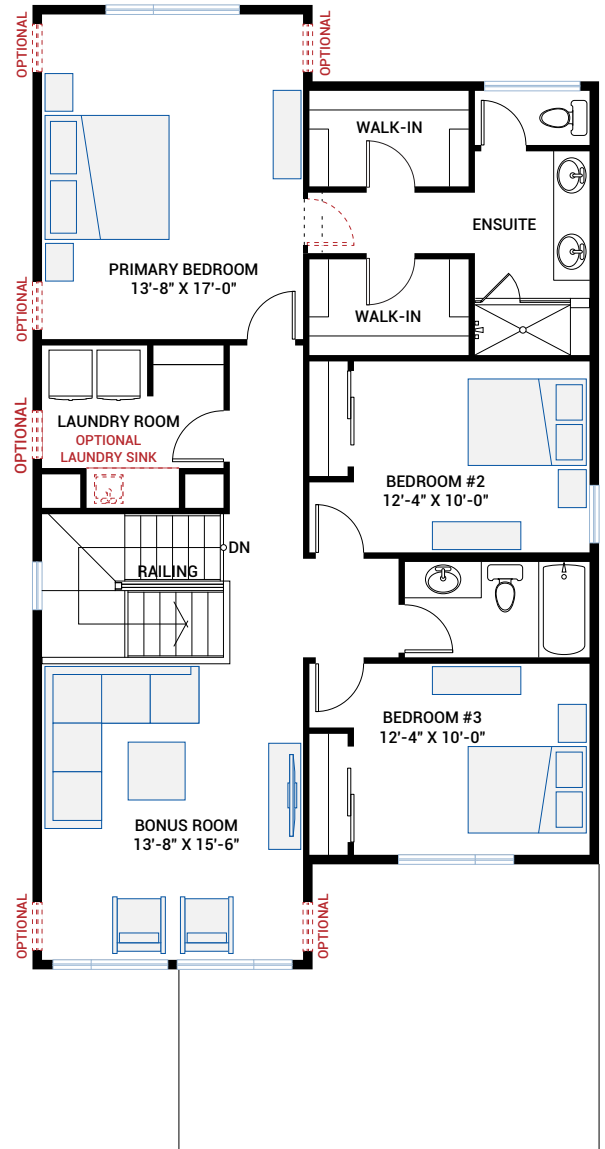
MAIN FLOOR

1,019 SQ FT



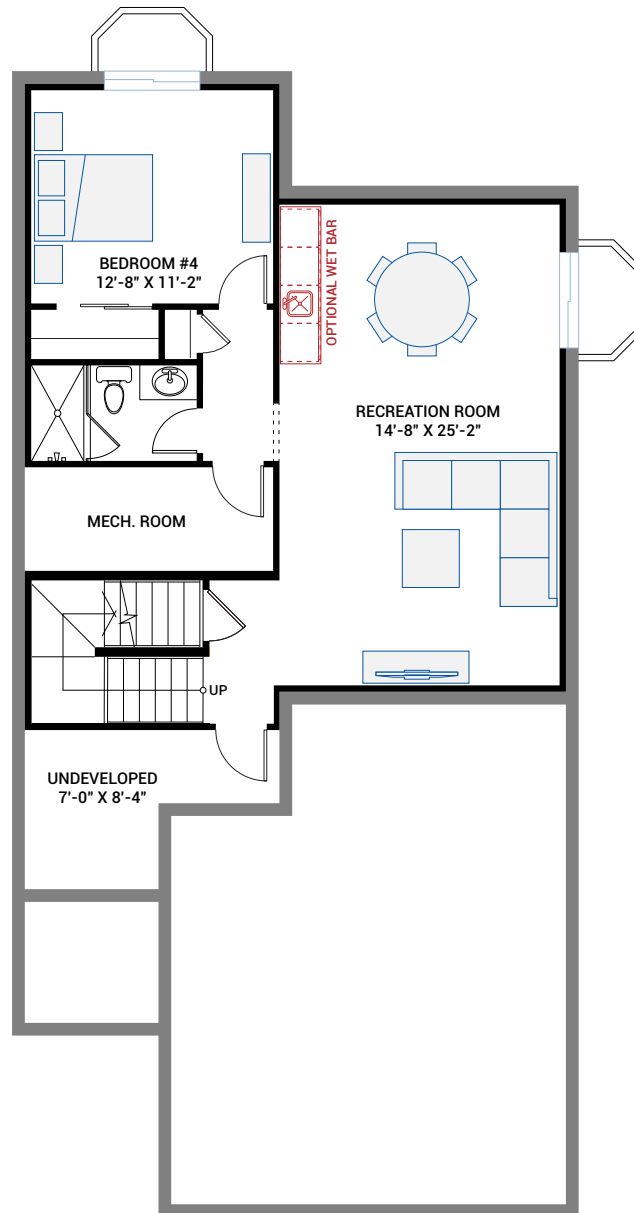
UPPER FLOOR

1,281 SQ FT

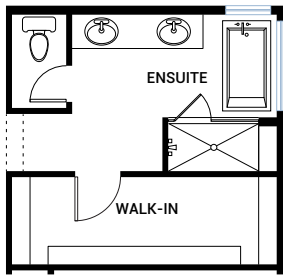


BASEMENT

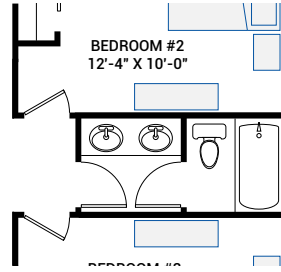
610 SQ FT



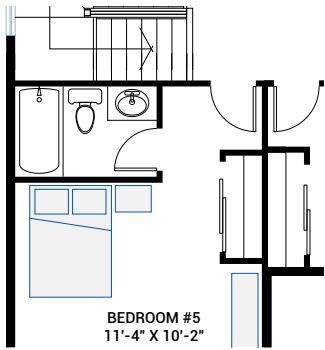
FLOORPLAN OPTIONS



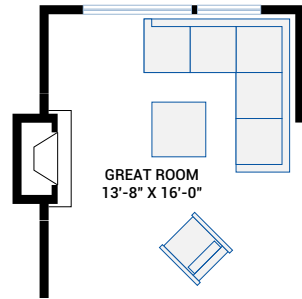
Alternate Ensuite



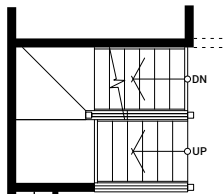
Alternate Main Bath



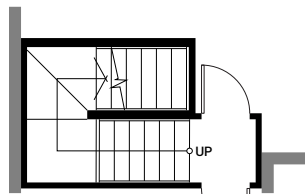
Fifth Bedroom Suite
- Replaces Bonus Room



Fireplace
- Revise Great Room Windows



Plan View - Main Floor



Plan View - Basement

Developed Basement Stairs