
THE GRAYSON



FARMHOUSE A2



CANADIANA A1



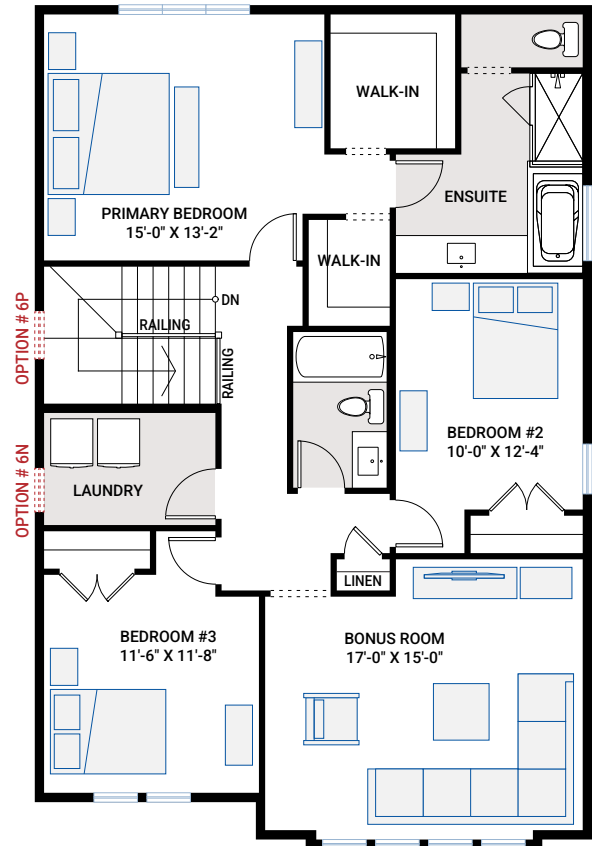
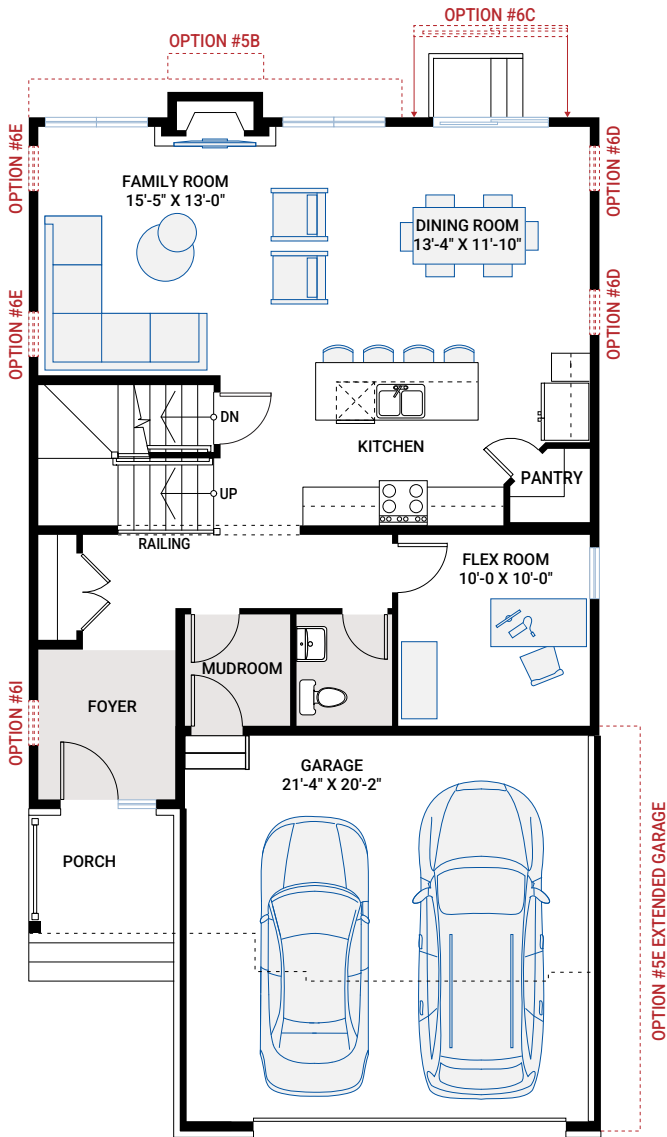
MODERN A3

MAIN FLOOR

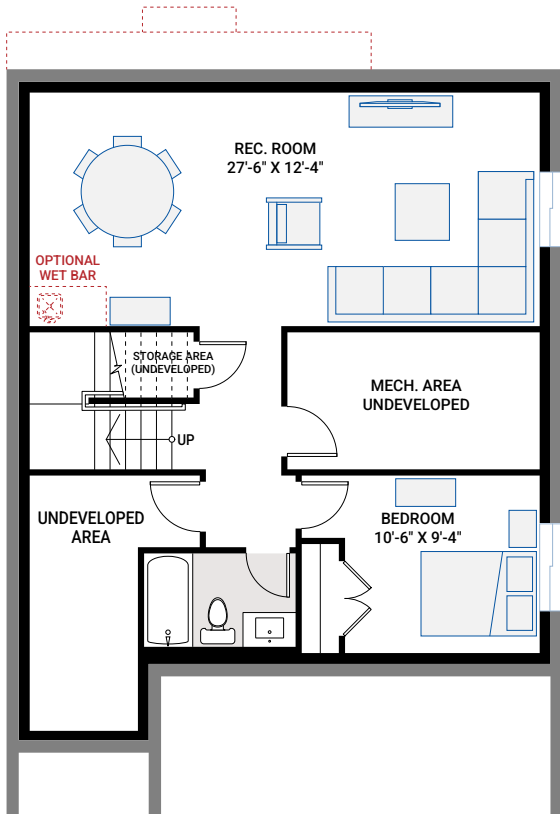
1,018 SQ FT

UPPER FLOOR

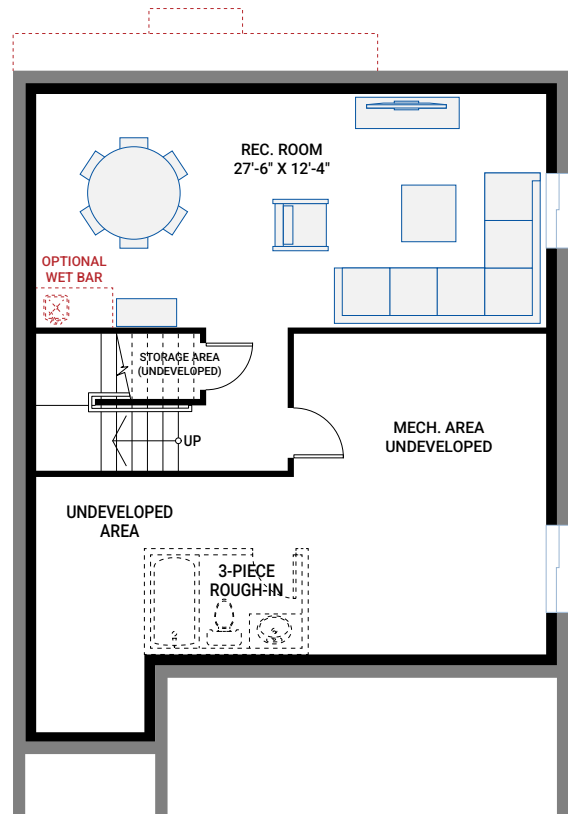
1,328 SQ FT



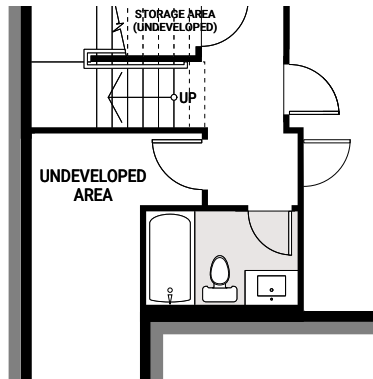
BASEMENT OPTIONS



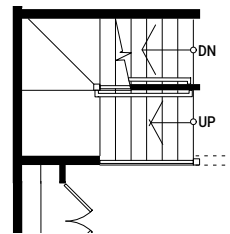
OPTION #1B
Developed Basement
 - includes Option #1A - Developed Basement Stairs
 - additional 706 sq ft developed basement



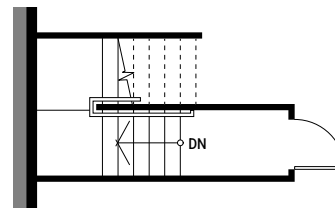
OPTION #1C
Developed Basement Rec. Room
 - includes Option #1A - Developed Basement Stairs
 - additional 466 sq ft developed basement



OPTION #1F
Developed Basement Bathroom
 - only available with Option #1C
 - additional 83 sq ft Developed Basement



Partial Main Floor Plan

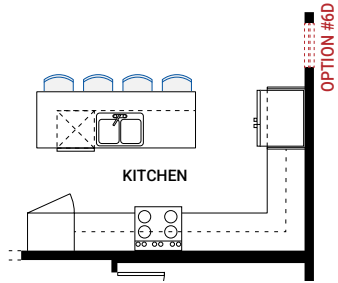


Partial Basement Plan

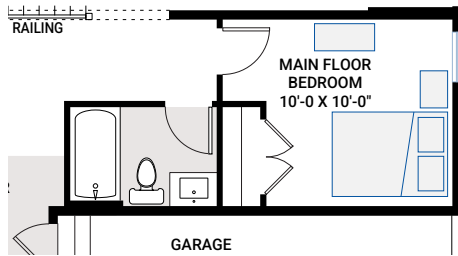
OPTION #4A
9'-0" Basement Ceiling
 - adds two risers to Basement stairs, consisting of one winder on lowest landing and one tread on bottom run.

OPTION #1A
Developed Basement Stairs
 - adds 25 sq ft to Basement

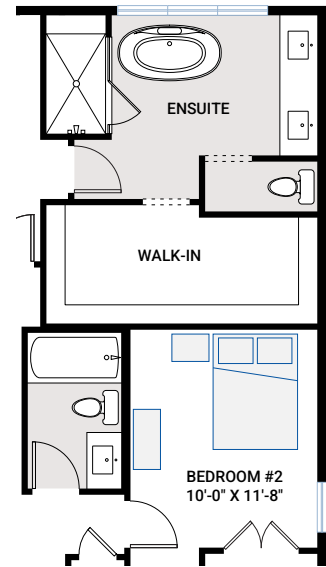
FLOORPLAN OPTIONS



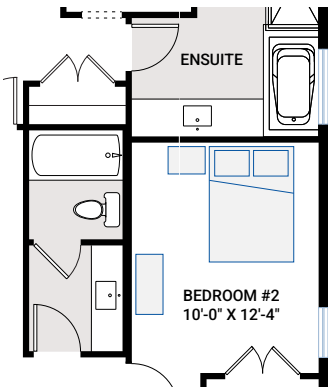
OPTION #2A
Alternate Kitchen



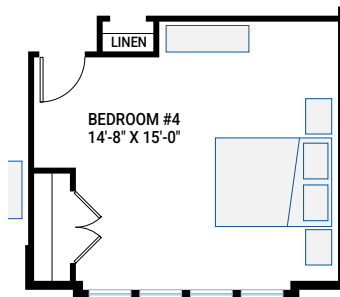
OPTION #2C
Main Floor Bedroom and Full Bath



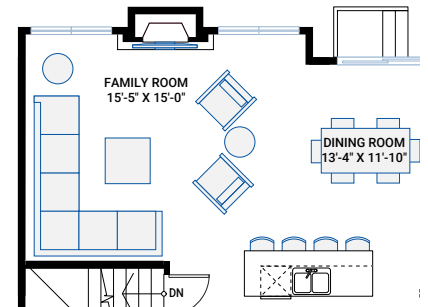
OPTION #3A
Alternate Ensuite
- Primary bedroom width reduced by 1'0"
- Bonus room depth reduced by 2'0"
- Bedroom #2 depth reduced by 8"
- not available in conjunction with Option #3B



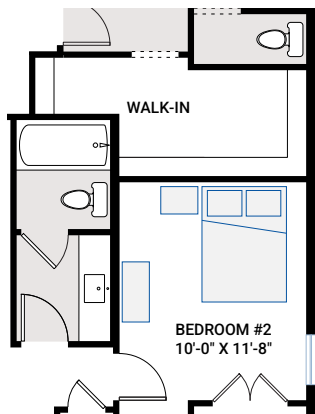
OPTION #3B
Alternate Main Bathroom
- not available with Option #3A



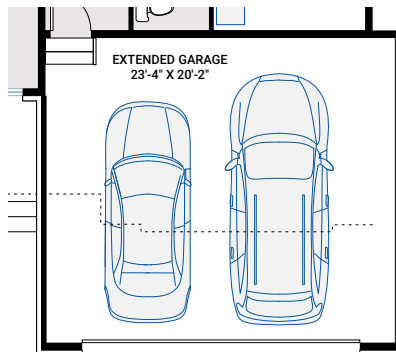
OPTION #3C
Fourth Bedroom
- Bonus Room replaced with Bedroom
- if Alternate Option #3A is chosen, Bedroom reduced by 2'



OPTION #5B
Extended Family Room
- Extend rear of Family Room 2'-0"
- Full foundation below
- Additional 39 sq. ft. Main Floor
- Additional 39 sq. ft. developed basement if option 1B or 1C selected



OPTION #3G
Alternate Main Bath for Option #3A
- only available with Option #3A



OPTION #7E
Extended Garage
- only available with Elevation 'A2'
- garage widened by 2'-0"
- additional 45 sq. ft. of garage
- garage door centered on wall

OPTION #4B
9'-0" Upper Floor Ceiling
- all Upper Floor windows increased in height
- subject to maximum bylaw height restrictions