

---

# THE GRAYSON

---



FARMHOUSE A2



CANADIANA A1



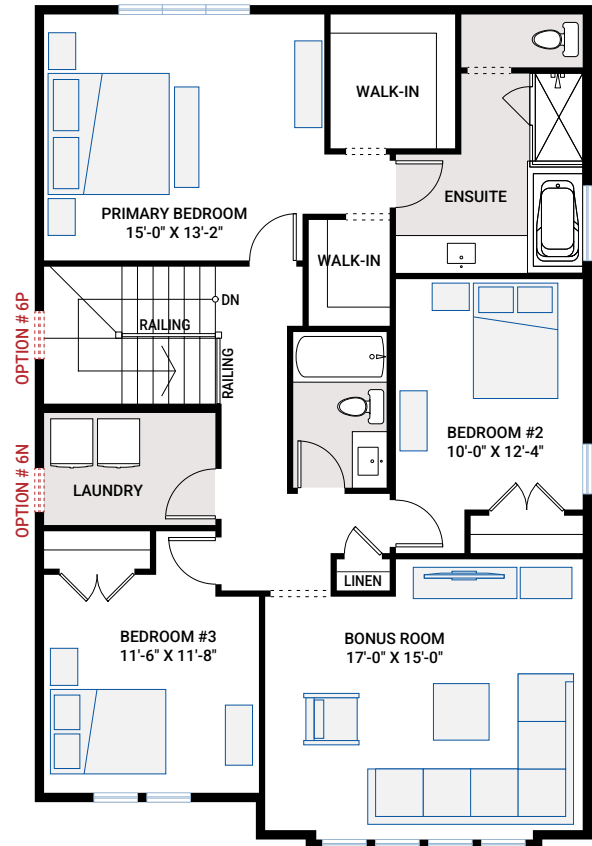
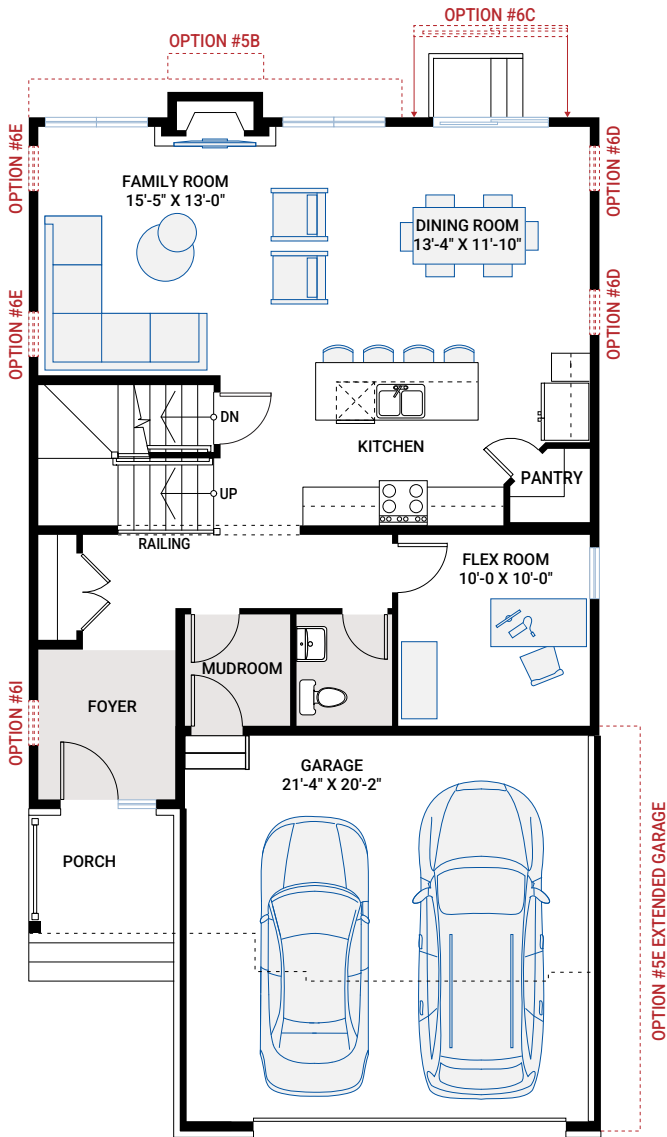
MODERN A3

# MAIN FLOOR

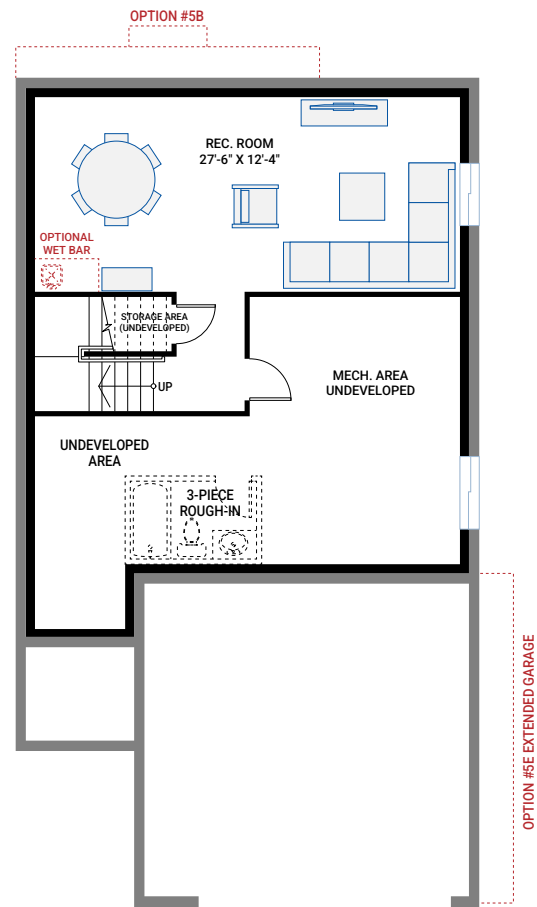
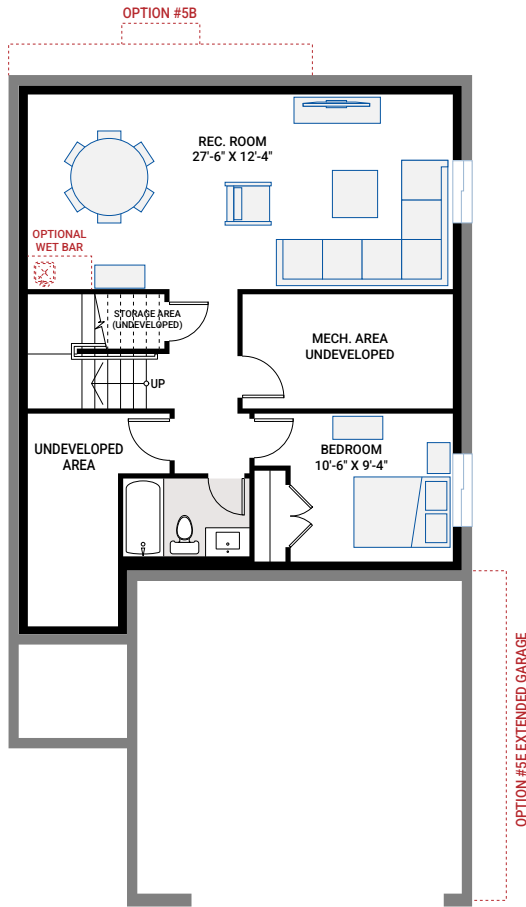
1,018 SQ FT

# UPPER FLOOR

1,328 SQ FT

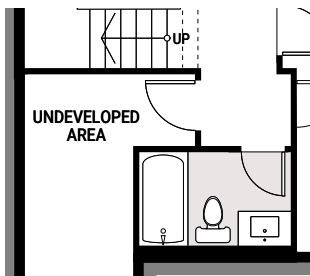


# BASEMENT OPTIONS

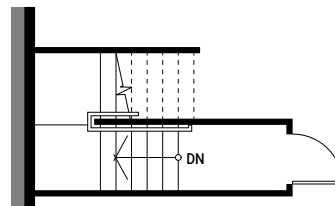


**OPTION #1B**  
**Developed Basement**  
 - includes Option #1A - Developed Basement Stairs  
 - additional 706 sq ft developed basement

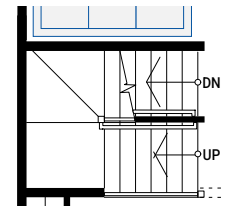
**OPTION #1C**  
**Developed Basement Rec. Room**  
 - includes Option #1A - Developed Basement Stairs  
 - additional 466 sq ft developed basement



**OPTION #1F**  
**Developed Basement Bathroom**  
 - only available with Option #1C  
 - additional 83 sq ft Developed Basement



Partial Basement Plan

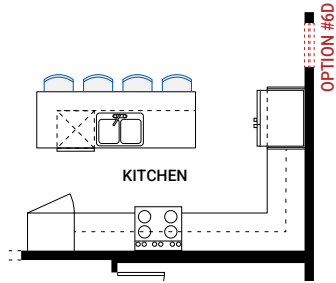


Partial Main Floor Plan

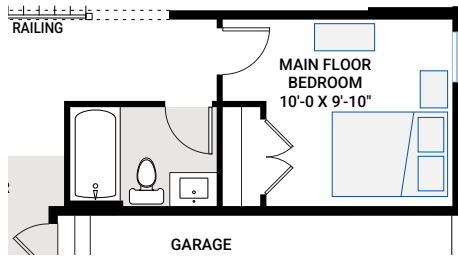
**OPTION #4A**  
**9'-0" Basement Ceiling**  
 - adds two risers to Basement stairs, consisting of one winder on lowest landing and one tread on bottom run.

**OPTION #1A**  
**Developed Basement Stairs**  
 - adds 25 sq ft to Basement

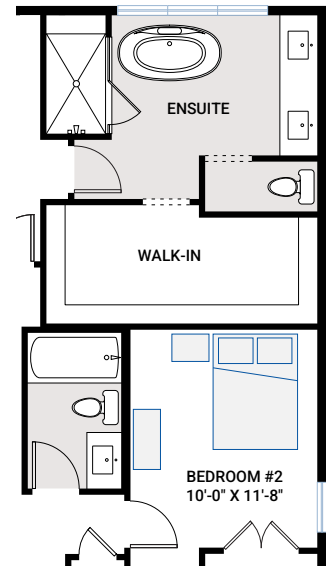
# FLOORPLAN OPTIONS



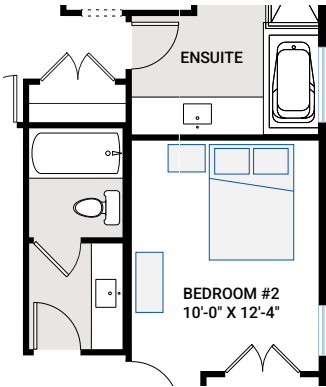
**OPTION #2A**  
Alternate Kitchen



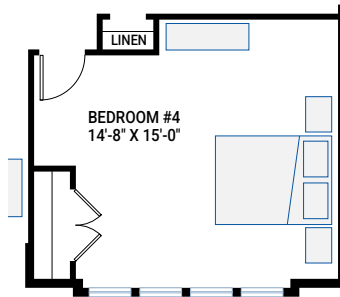
**OPTION #2C**  
Main Floor Bedroom and Full Bath



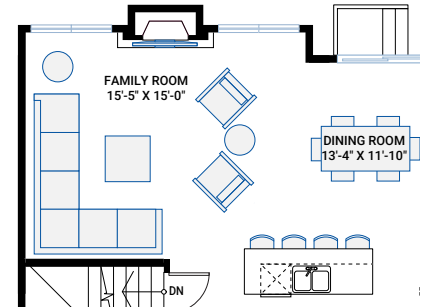
**OPTION #3A**  
Alternate Ensuite  
- Primary bedroom width reduced by 1'0"  
- Bonus room depth reduced by 2'0"  
- Bedroom #2 depth reduced by 8"  
- not available in conjunction with Option #3B



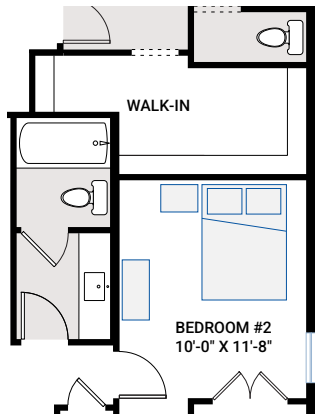
**OPTION #3B**  
Alternate Main Bathroom  
- not available with Option #3A



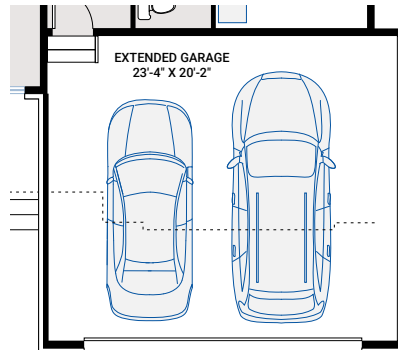
**OPTION #3C**  
Fourth Bedroom  
- Bonus Room replaced with Bedroom  
- if Alternate Option #3A is chosen, Bedroom reduced by 2'



**OPTION #5B**  
Extended Family Room  
- Extend rear of Family Room 2'-0"  
- Full foundation below  
- Additional 39 sq. ft. Main Floor  
- Additional 39 sq. ft. developed basement if option 1B or 1C selected



**OPTION #3G**  
Alternate Main Bath for Option #3A  
- only available with Option #3A



**OPTION #5E**  
Extended Garage  
- only available with Elevation 'A2'  
- garage widened by 2'-0"  
- additional 45 sq. ft. of garage  
- garage door centered on wall

**OPTION #4B**  
9'-0" Upper Floor Ceiling  
- all Upper Floor windows increased in height  
- subject to maximum bylaw height restrictions