
🕒 QUICK POSSESSION



FSCL-1

EXTERIOR COLOURS ARE NOT EXACT

ETON
(PAIRED HOME)

FIRESIDE
315 FIRESIDE DRIVE

1,490 SQ
FT

**9' MAIN FLOOR
CEILING**

**QUARTZ
COUNTERTOPS**

**LVP FLOORING
ON MAIN FLOOR**

FIRESIDE
OF COCHRANE

1,490 SQ FT | 3 BED | 2.5 BATH

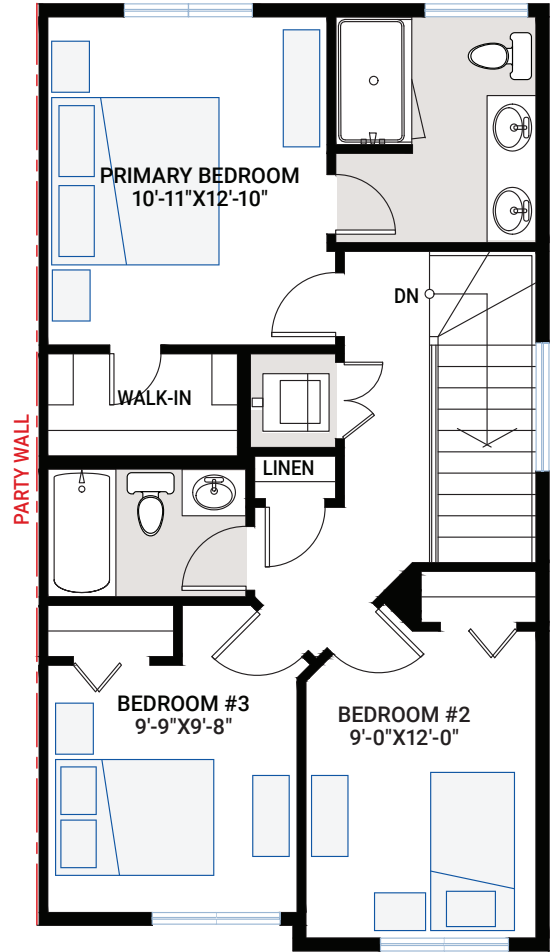
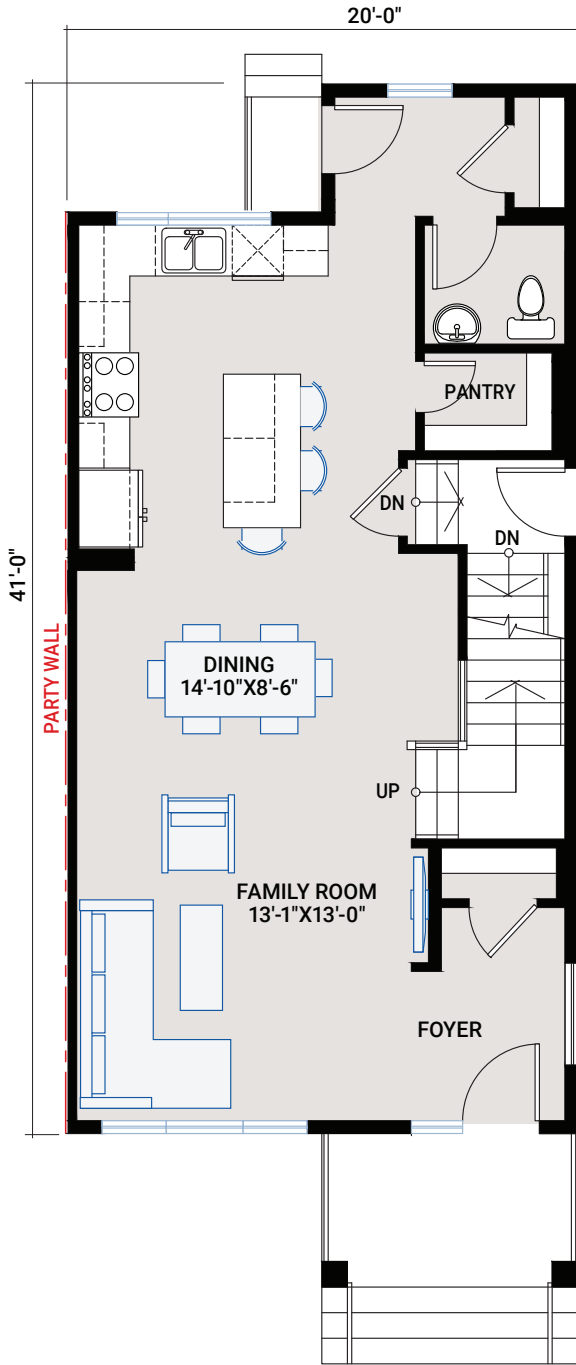
CARDEL
HOMES

MAIN FLOOR

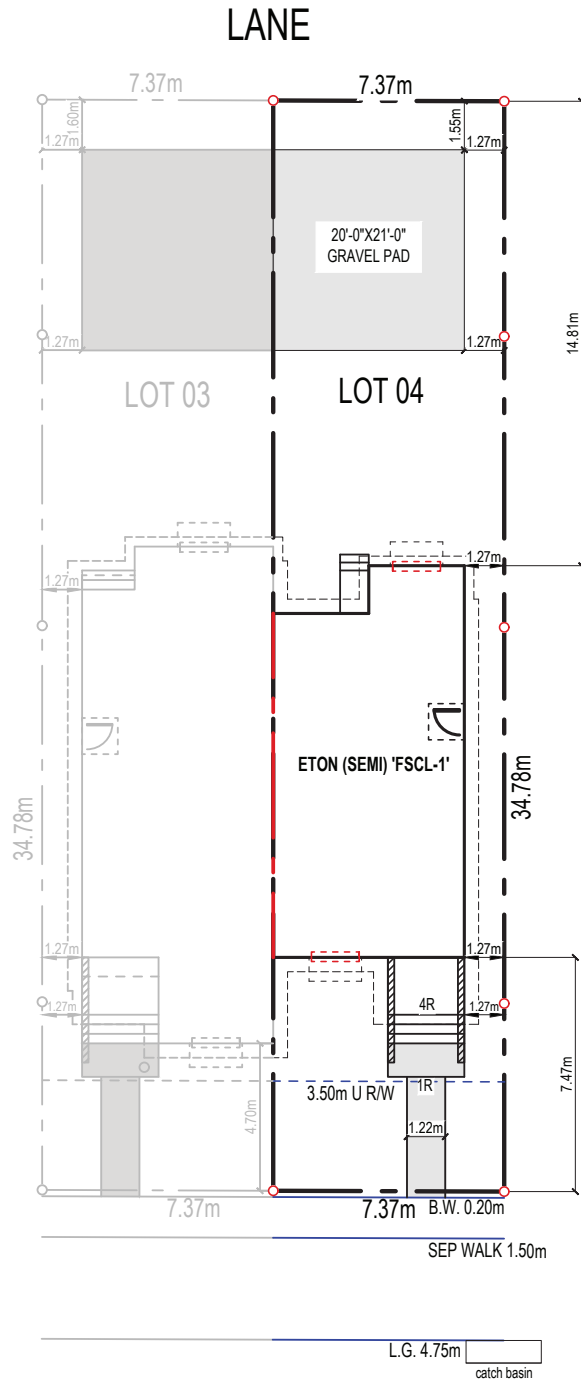
770 SQ FT

UPPER FLOOR

720 SQ FT



PLOT PLAN



INCLUDED FEATURES

- 9' main floor ceiling
- Separate side entrance to basement
- LVP flooring throughout main floor
- Tile flooring in bathrooms
- Custom cabinetry package including:
 - Satin white cabinetry (Thermofoil)
 - Soft close hardware
 - Dovetail drawers
 - Matte black hardware
- Samsung stainless steel appliances
- Quartz countertops throughout
- Upgraded Delta Trinsic Kitchen faucet in matte black
- Blanco – granite kitchen sink
- Upgraded kitchen backsplash
- Upgraded railing
- Upgraded wall tile package
- Moen plumbing faucets and fixtures in matte black
- Pot lighting
- Dual ensuite sinks
- Samsung front load washer and dryer
- Heat recovery ventilation system
- Cardel's premium spray foam attic insulation assembly
- Rough-in gas line to kitchen stove and deck
- 30-year shingles

INTERIOR COLOUR PALETTE

