
🕒 QUICK POSSESSION



ETON
(PAIRED HOME)

FIRESIDE
80 EMBERSIDE GROVE

1,490 SQ
FT

CURRENT
SHOWHOME

REAR DETACHED
GARAGE

AIR
CONDITIONING

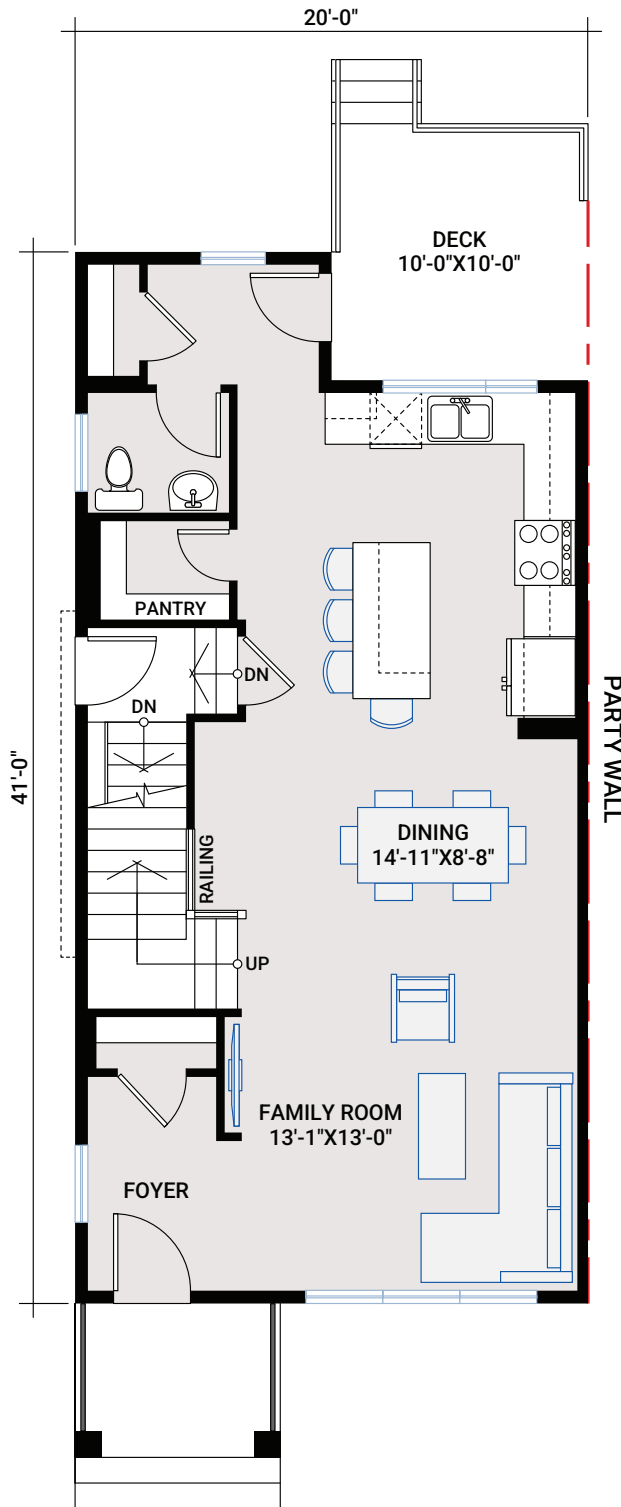
FIRESIDE
OF COCHRANE

1,490 SQ FT | 3 BED | 2.5 BATH

CARDEL
HOMES

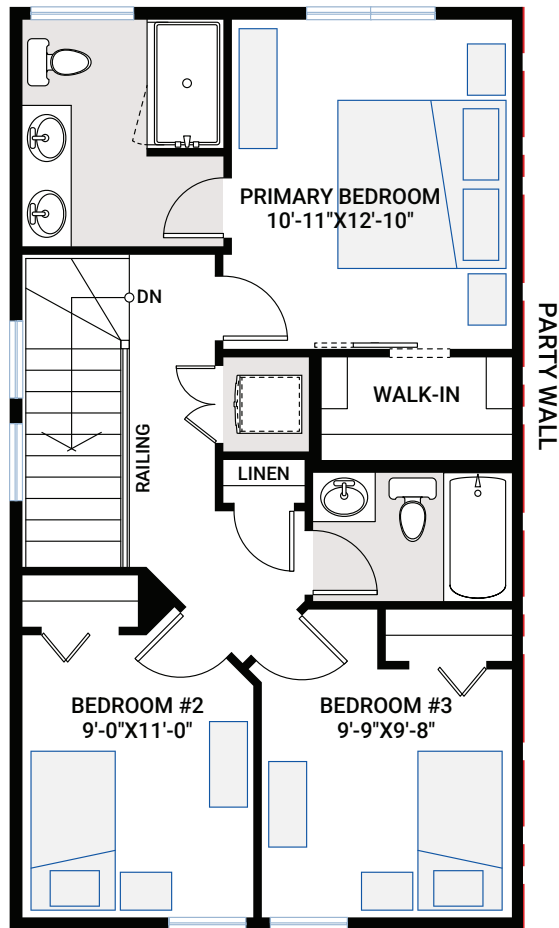
MAIN FLOOR

770 SQ FT



UPPER FLOOR

720 SQ FT



INCLUDED FEATURES

- Corner lot
- Air conditioning
- Rear detached garage
- 10' x 10' rear deck
- Walk-in pantry
- Upper floor laundry
- 9' main floor ceiling
- 9' basement foundation walls
- Separate side entrance to basement
- Hardwood flooring throughout main floor
- Primary bedroom with barn door on walk-in closet
- Primary ensuite with dual sinks
- Upgraded railing
- Quartz countertops throughout
- Stainless steel appliances:
 - Whirlpool French door counter-depth refrigerator
 - Whirlpool electric range
 - Whirlpool smart dishwasher
 - Whirlpool OTR microwave
- Upgraded Moen Cia pulldown kitchen faucet in Brushed Nickel
- Whirlpool front load washer and dryer
- Heat recovery ventilation system
- Cardel's premium spray foam attic insulation assembly
- Rough-in gas line to kitchen stove and deck

