
QUICK MOVE-IN



ELEVATION B1

THE ELM

153 SHALE STREET (UNIT 505)

**FINISHED BASEMENT
REC ROOM**

**SMOOTH CEILINGS
THROUGHOUT**

**QUARTZ
THROUGHOUT**

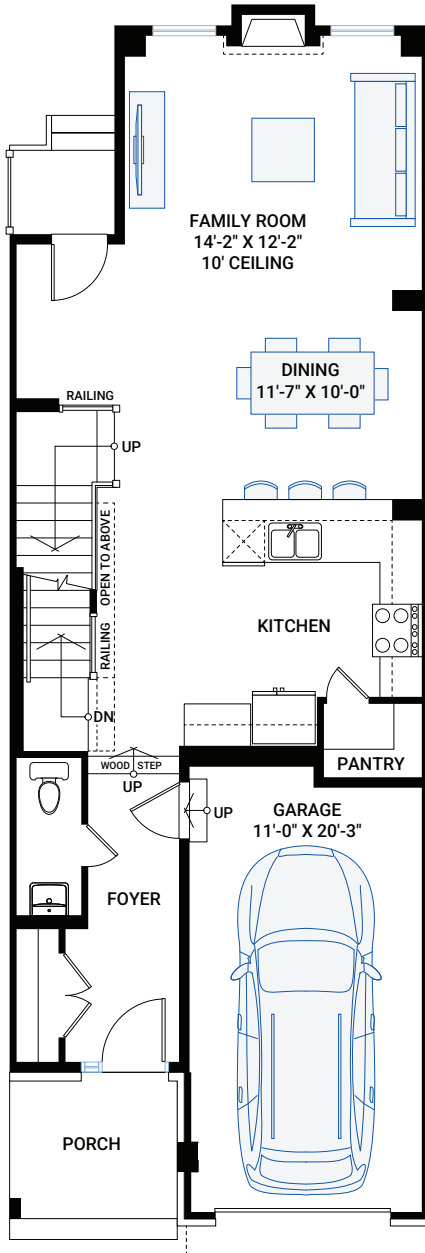


2,064 SQ FT | 3 BED | 2.5 BATH

**CARDEL
HOMES**

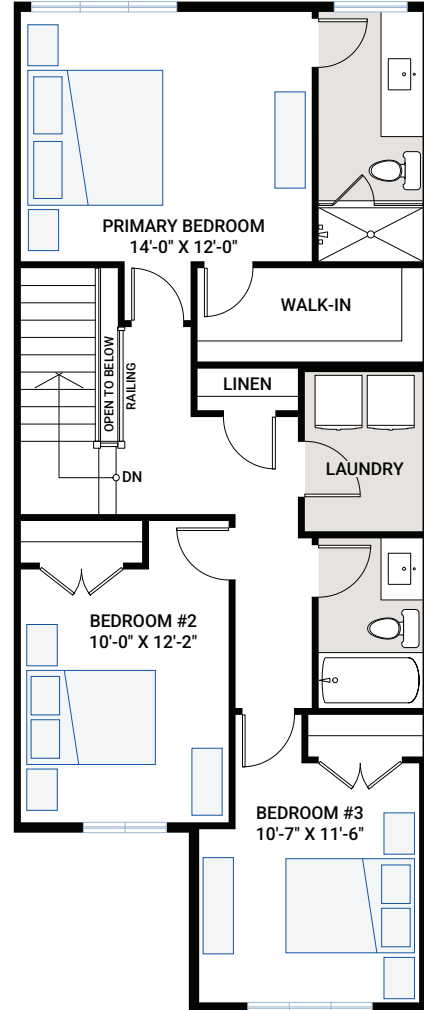
MAIN FLOOR

794 SQ FT



UPPER FLOOR

894 SQ FT



FOR MORE INFORMATION CONTACT:

Our New Home Consultant | P: 343.573.2464

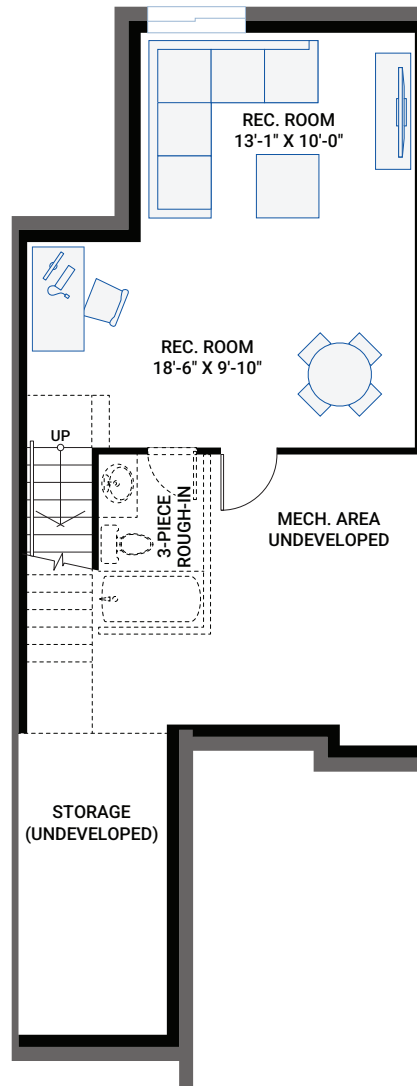


2,064 SQ FT | 3 BED | 2.5 BATH



BASEMENT

376 SQ FT



- Open-concept floorplan with main floor flex space
- Family room gas fireplace
- Upgraded luxury vinyl plank throughout main floor
- Bright interior with Designer selections including;
 - Upgraded white shaker doors throughout
 - Quartz in kitchen, ensuite and main bath
 - Extended upper cabinet
- Soft close doors and drawers with black hardware
- Stacked subway tile pattern in kitchen
- Stacked square tile pattern in bathrooms
- 4 LG kitchen appliances included (fridge, stove, dishwasher and OTR microwave)
- Second floor laundry room
- Developed basement rec room with 3-piece rough-in for future bathroom

INTERIOR COLOUR SCHEME – J



* All sizes are nominal. The colours represented on this page may vary from the actual product colours. Actual samples can be viewed by appointment.