

---

# THE DEVON

---



MODERN A3



MODERN A4



FARMHOUSEA2



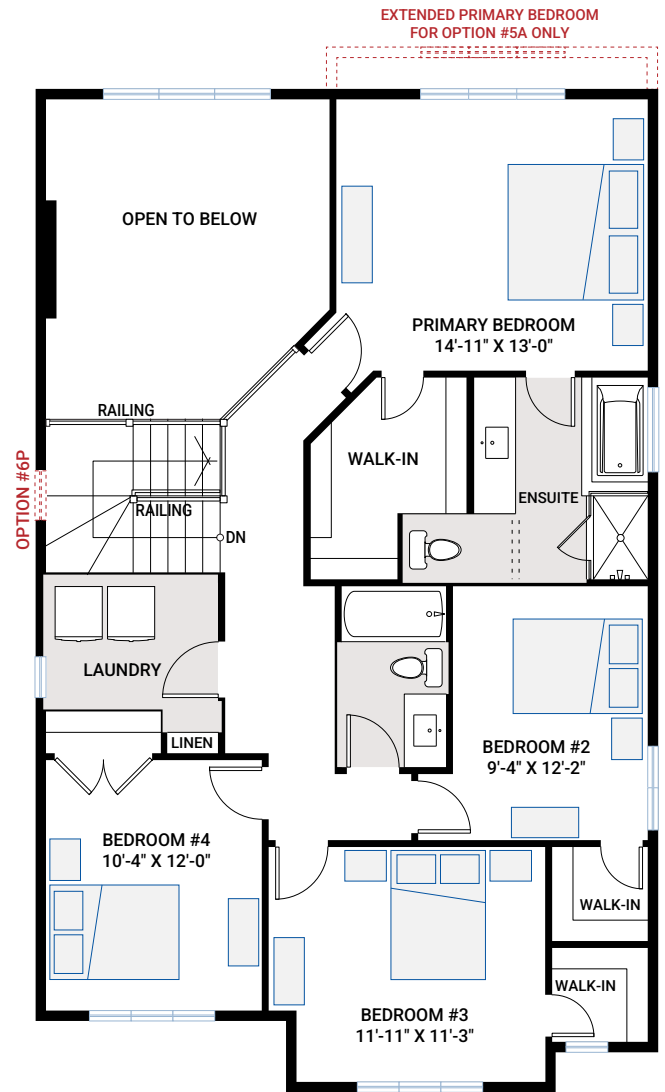
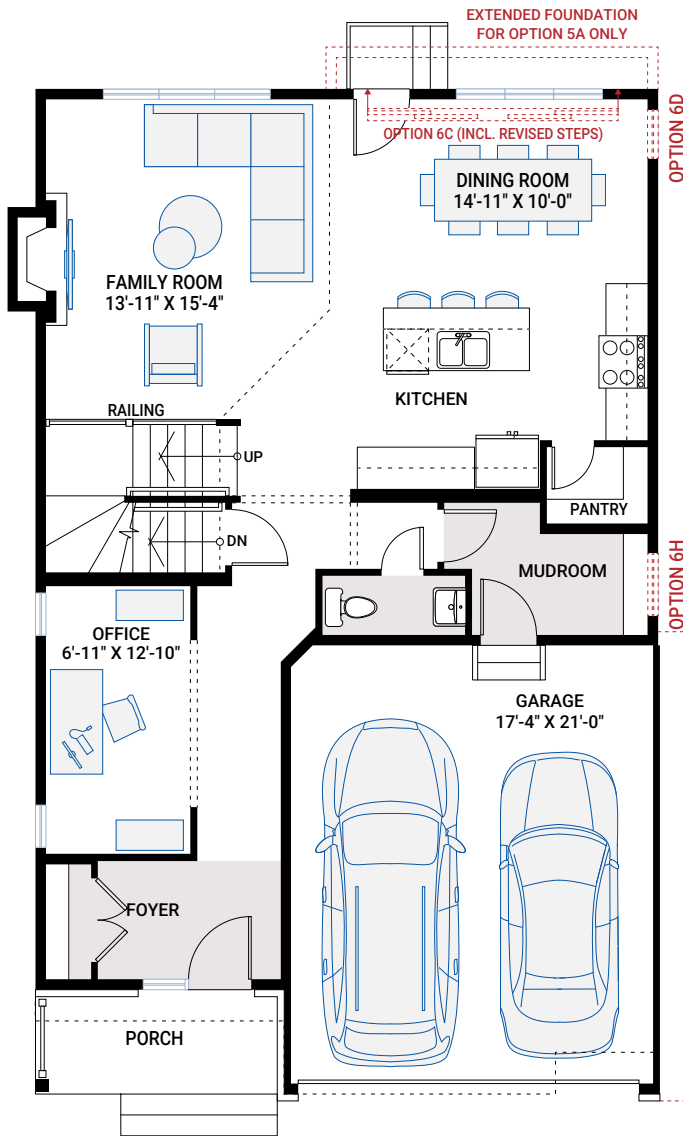
CANADIANA A1

# MAIN FLOOR

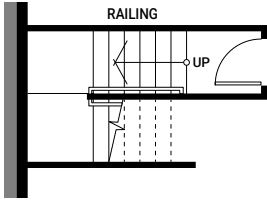
1,022 SQ FT

# UPPER FLOOR

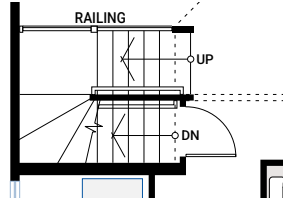
1,205 SQ FT



# BASEMENT OPTIONS



Partial Foundation Plan

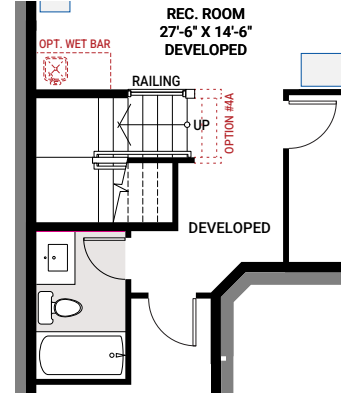


Partial Main Floor Plan

## OPTION #1A

### Developed Basement Stairs

- additional 18 sq ft Basement landing



## OPTION #1F

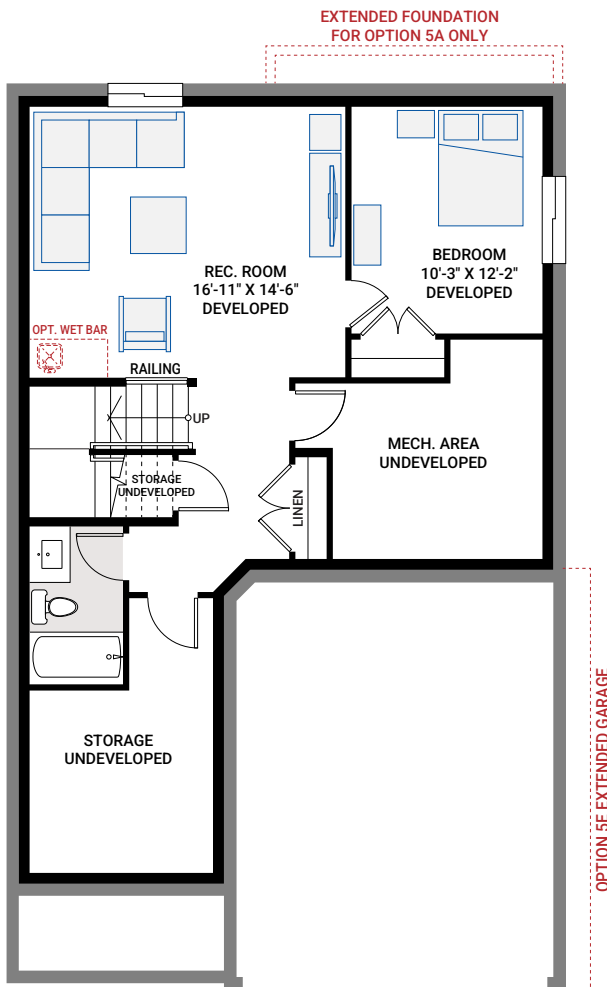
### Developed Basement Bathroom

- only available with Option 1C
- additional 113 sq ft Developed Basement

## OPTION #4A

### 9'-0" Basement Ceiling

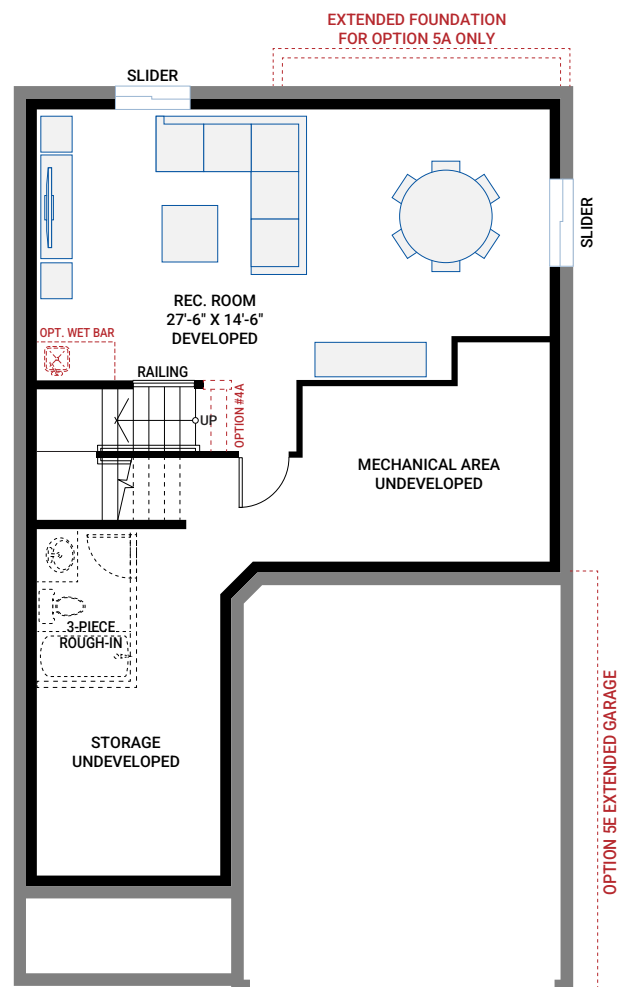
- add two risers to lower basement landing



## OPTION #1B

### Developed Basement

- additional 630 sq ft to Basement
- includes Option #1A - Developed Basement Stairs

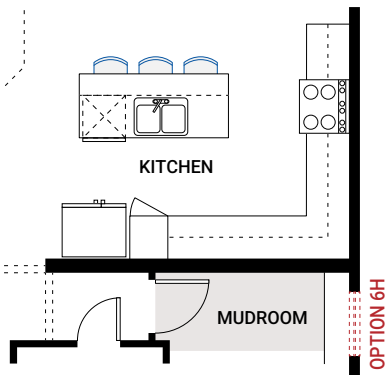


## OPTION #1C

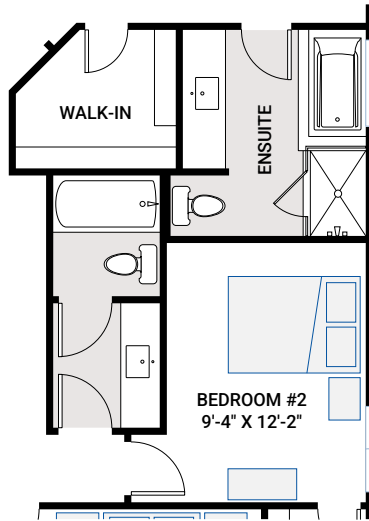
### Developed Basement Rec Room

- additional 495 sq ft to Basement
- includes Option #1A - Developed Basement Stairs

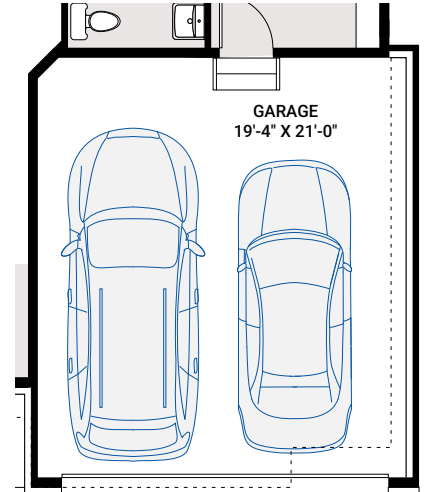
# FLOORPLAN OPTIONS



**OPTION #2A**  
**Alternate Kitchen**  
 - corner pantry deleted and replaced with cabinetry

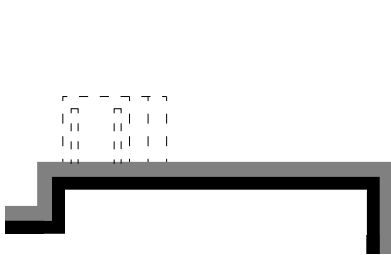


**OPTION #3B**  
**Alternate Main Bath**

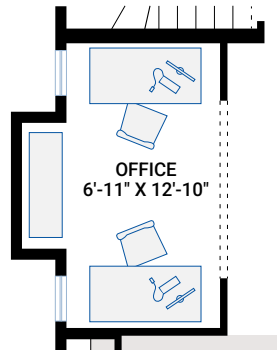


**OPTION #5E**  
**Extended Garage**  
 - only available with Elevation A2  
 - garage widened by 2'-0"  
 - additional 45 sq ft of garage  
 - garage door centred on wall

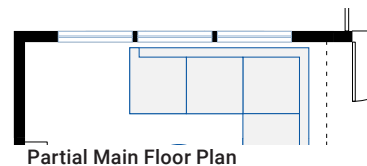
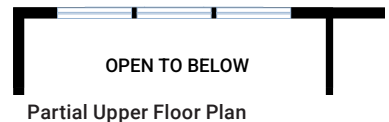
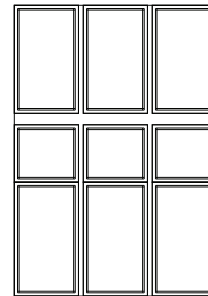
**OPTION #4B**  
**9'-0" Upper Floor Ceiling**  
 - all Upper Floor windows to be increased in height  
 - subject to maximum bylaw height restrictions



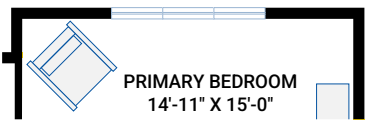
Partial Basement Plan



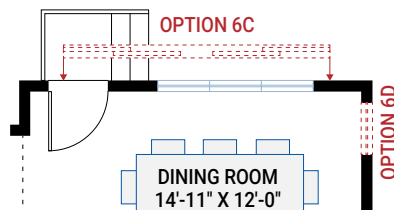
**OPTION #5D**  
**Office Bump Out**  
 - adds 14 sq ft  
 - lot size permitting



**OPTION #6G**  
**Family Room Window Wall**  
 - delete standard window configuration and replace with Window Wall as shown



Partial Upper Floor Plan



Partial Main Floor Plan

**OPTION #5A**  
**Extended Dining and Primary Bedroom**  
 - additional 32 sq ft for Main and Upper Floors  
 - full foundation below