
🕒 QUICK MOVE-IN



MODERN A4

THE DEVON

1152 BRONZE AVENUE (LOT 84)

MAIN FLOOR
OFFICE LOCATED
NEAR ENTRY

EXTENDED DINING
ROOM AND
PRIMARY BEDROOM

17' FAMILY ROOM
CEILING WITH
WINDOW WALL



2,305 SQ FT | 4 BED | 2.5 BATH

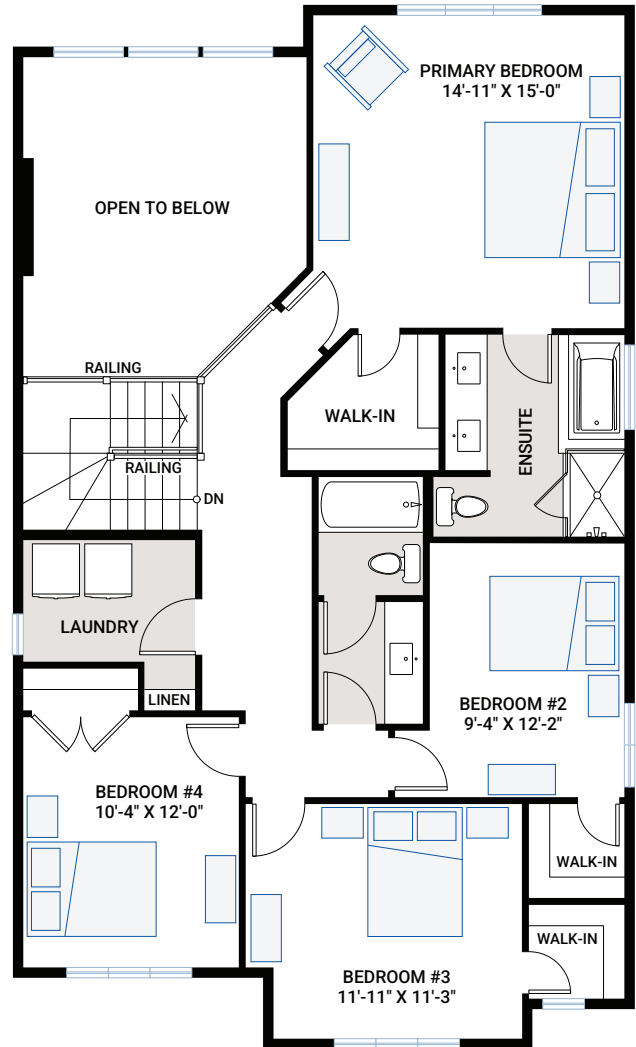
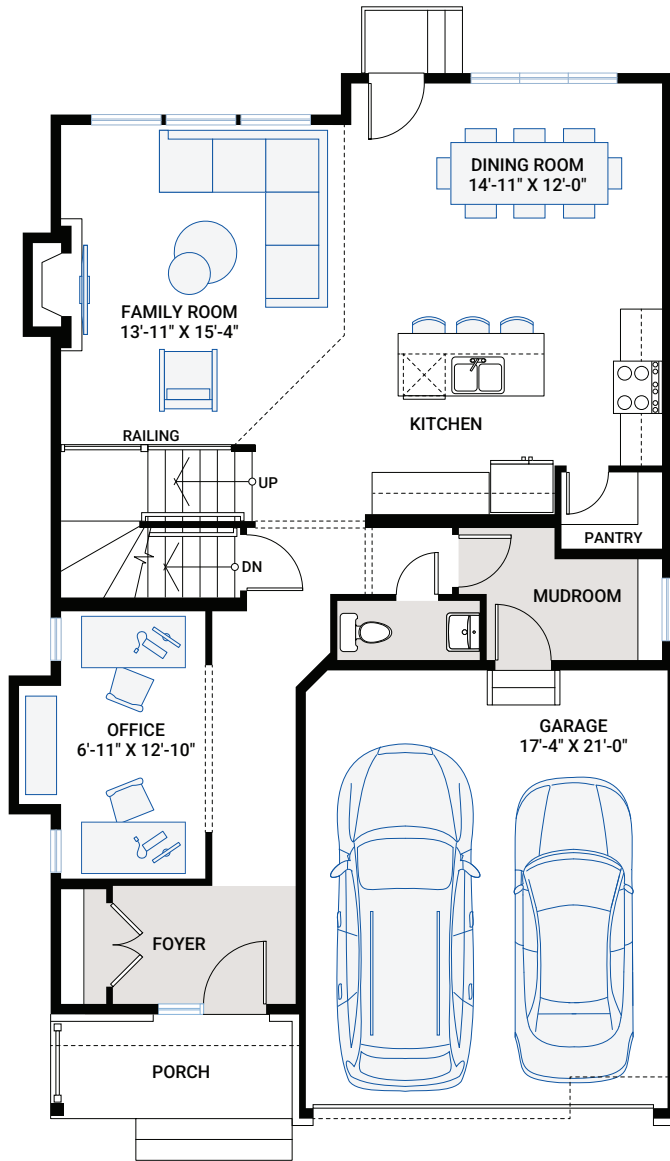
CARDEL
HOMES

MAIN FLOOR

1,068 SQ FT

UPPER FLOOR

1,237 SQ FT



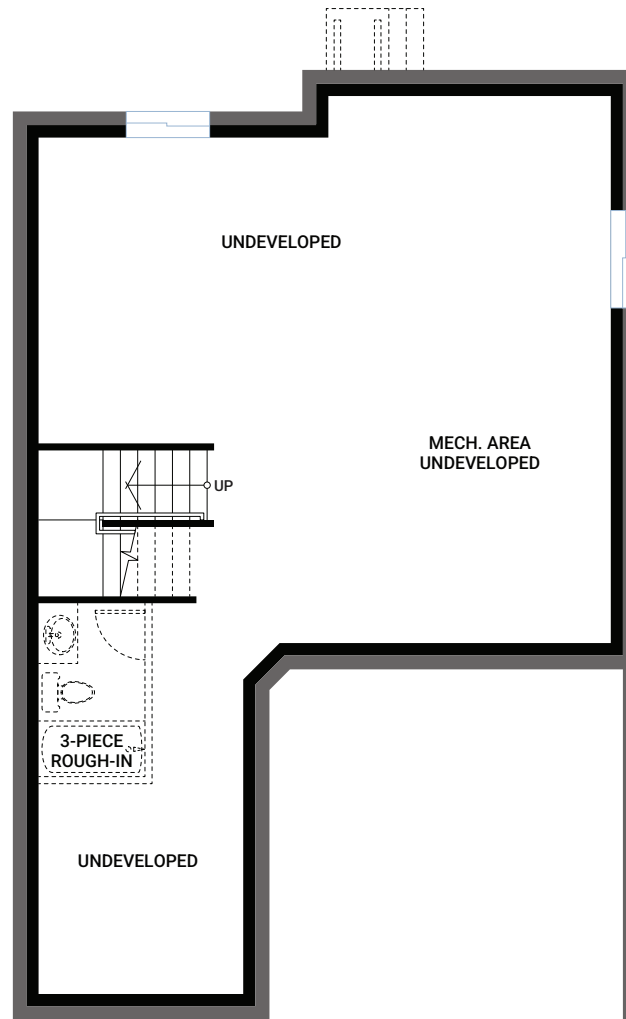
FOR MORE INFORMATION CONTACT: **THANG NGUYEN**, New Home Consultant
thang.nguyen@cardelhomes.com | P: 343.573.2464



2,305 SQ FT | 4 BED | 2.5 BATH

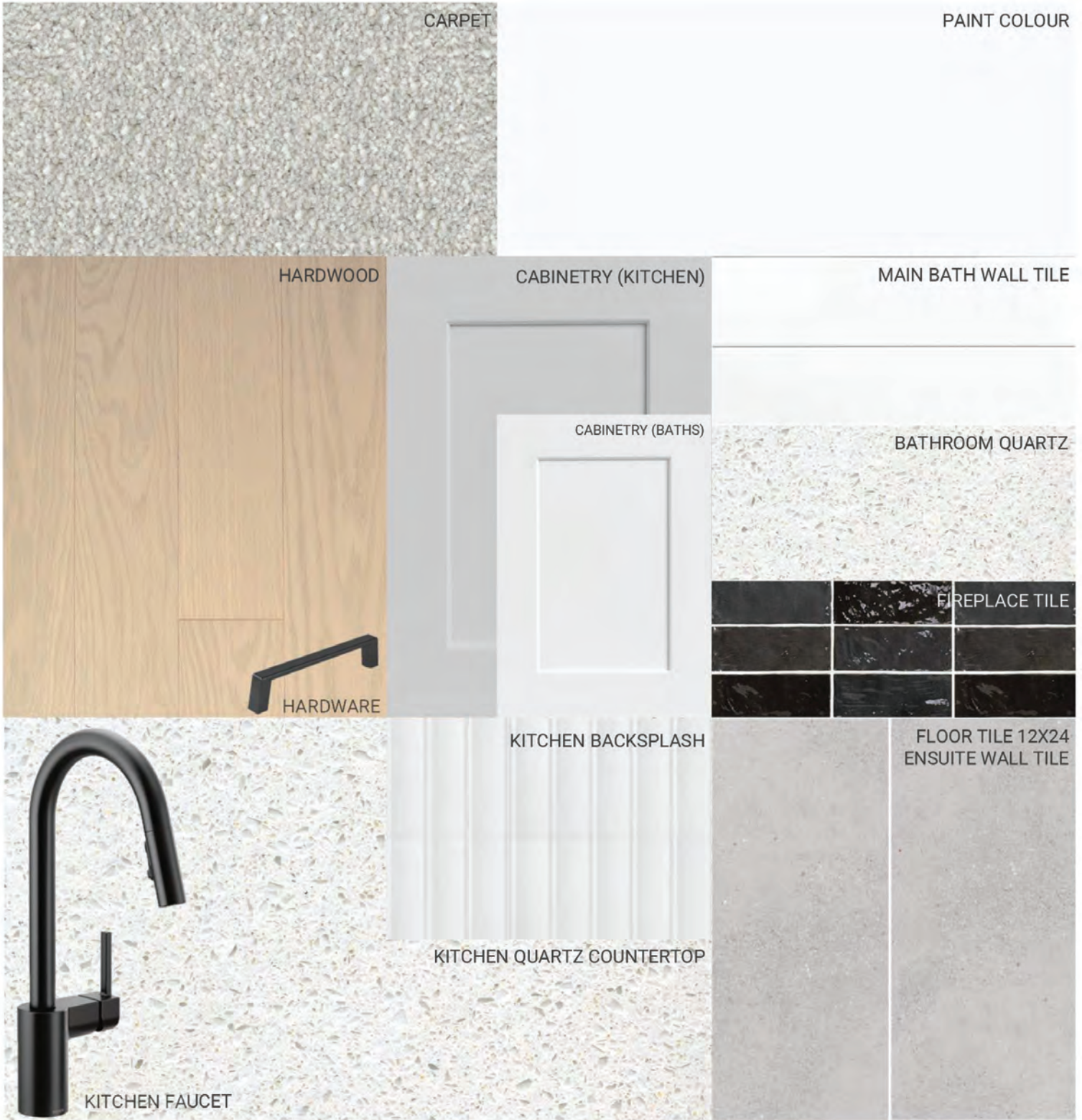


BASEMENT



- Open-concept main floor with unobstructed view to kitchen and family room
- Office bump out
- Light filled interior with optional family room window wall and mudroom window
- Generous-size kitchen with walk-in pantry
- Bright interior with Designer selections including:
 - Quartz in kitchen, ensuite and main bath
 - Upgraded shaker doors throughout
 - Extended upper cabinets
- Stainless steel chimney hood fan
- Soft close doors and drawers with black hardware
- Layered stacked subway tile pattern kitchen backsplash
- Oak hardwood flooring throughout main floor and kitchen
- Wrap-around oak fireplace mantle
- Second floor laundry room
- 4 bedrooms, 3 with walk-in closets

INTERIOR COLOUR SCHEME – 8



* All sizes are nominal. The colours represented on this page may vary from the actual product colours. Actual samples can be viewed by appointment.