

---

# THE DAWSON

---



CANADIANA A1



FARMHOUSE A2



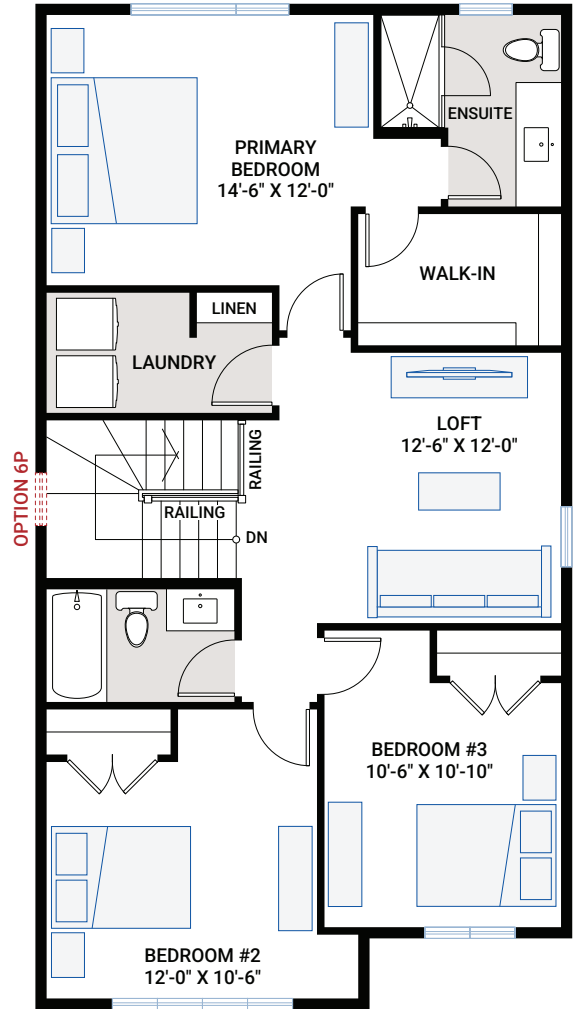
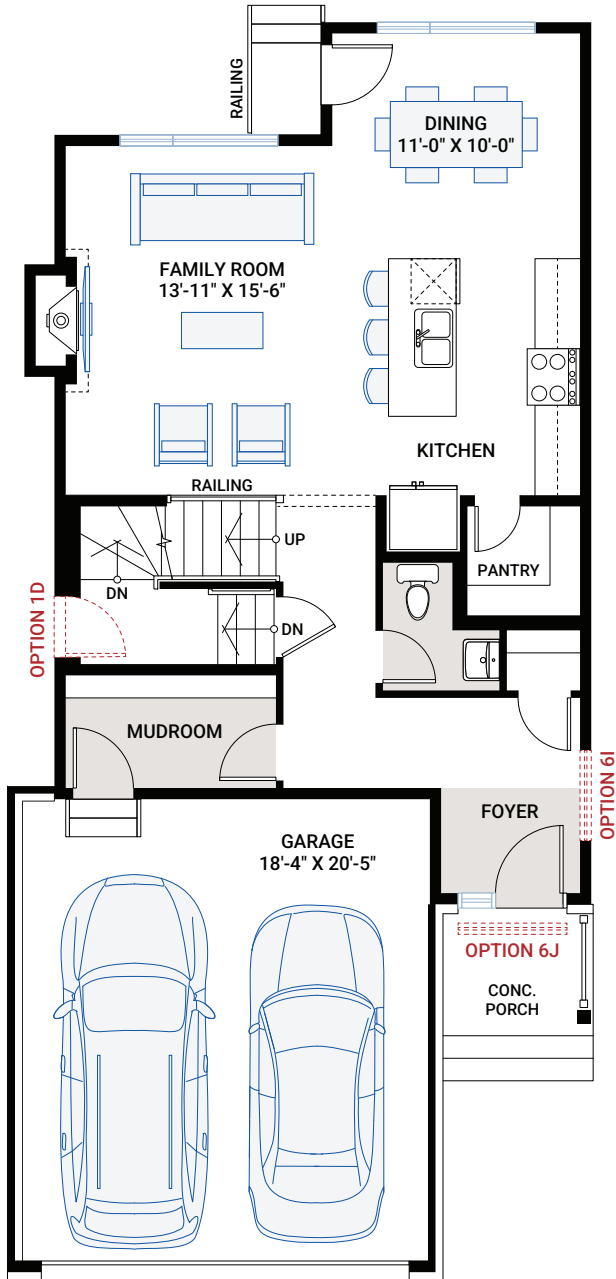
MODERN A3

# MAIN FLOOR

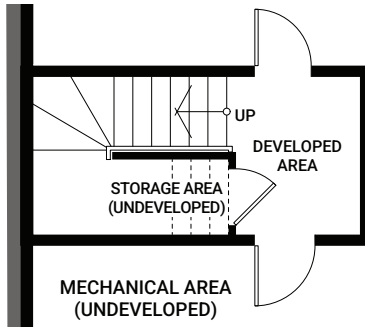
816 SQ FT

# UPPER FLOOR

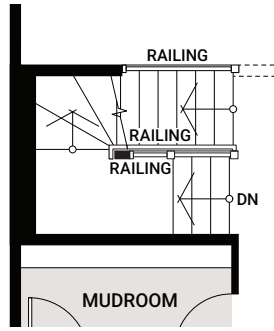
1,048 SQ FT



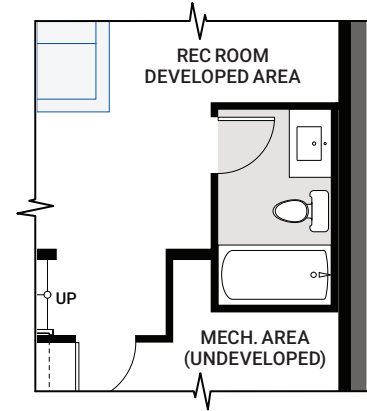
# BASEMENT OPTIONS



Partial Basement Plan



Partial Main Floor Plan



**OPTION #1F**  
Developed Basement Bathroom

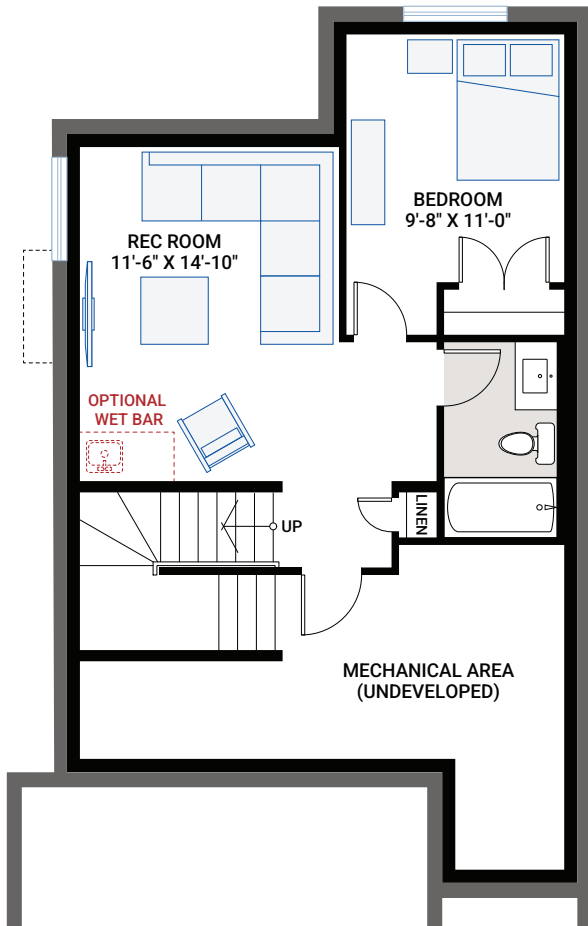
- only available with option #1C
- adds 60 sq ft developed basement

**OPTION #1A**  
Developed Basement Stairs

- adds 49 sq ft basement landing

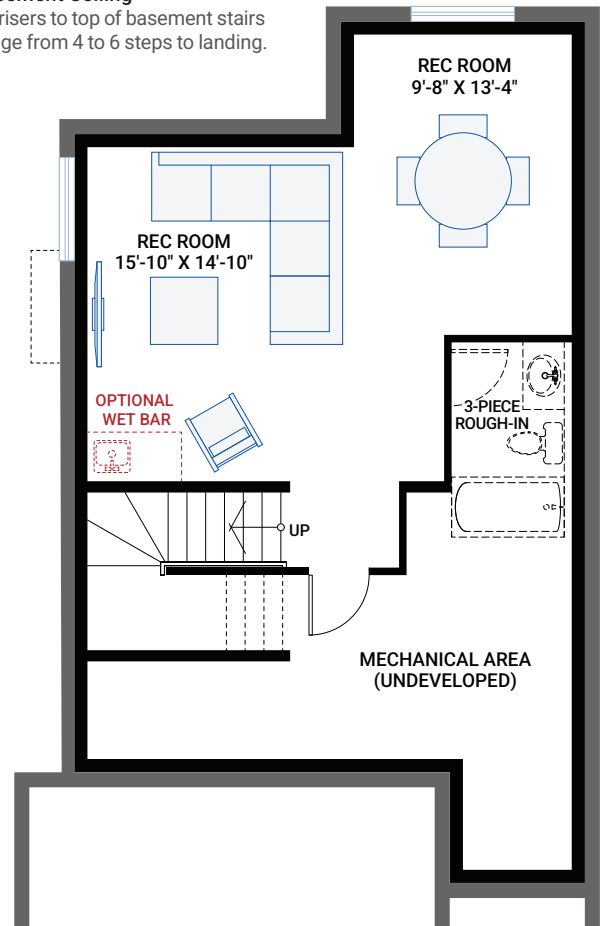
**OPTION #4A**  
9'-0" Basement Ceiling

- adds 2 risers to top of basement stairs to change from 4 to 6 steps to landing.



**OPTION #1B**  
Developed Basement

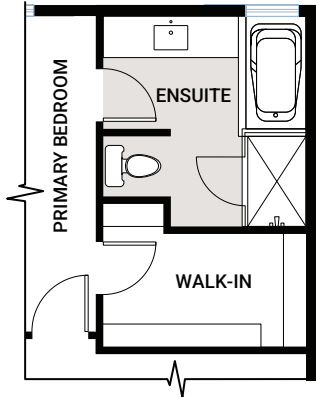
- additional 497 sq ft developed basement
- includes option #1A developed basement stairs



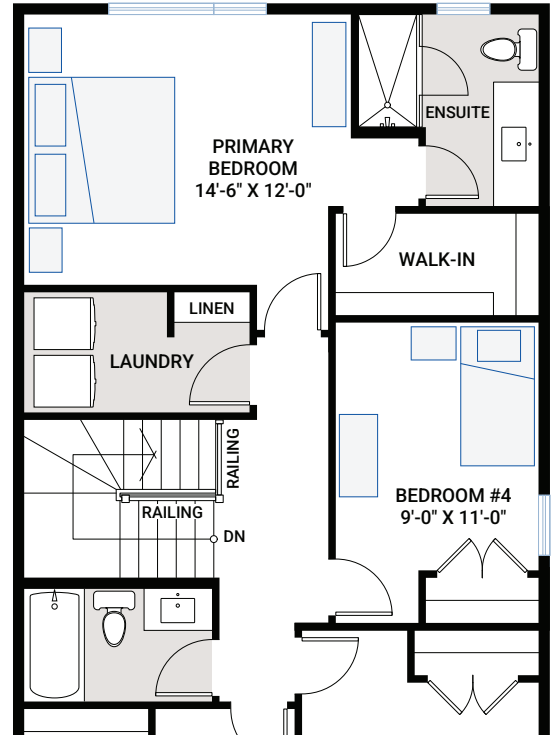
**OPTION #1C**  
Developed Basement Rec. Room

- additional 435 sq ft developed basement
- includes option #1A developed basement stairs

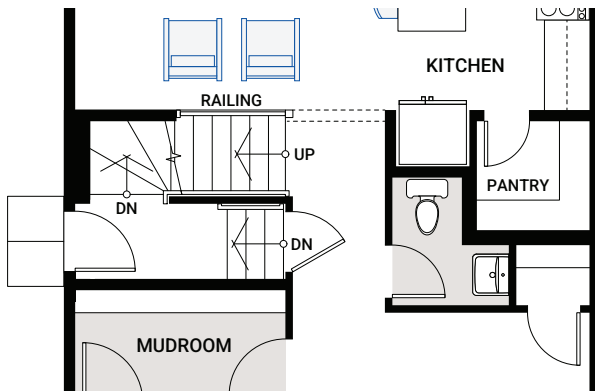
# FLOORPLAN OPTIONS



**OPTION #3A**  
**Alternate Primary Ensuite**  
 - primary bedroom reduced  
 - primary walk-in closet reduced  
 - not available with option #3C fourth bedroom



**OPTION #3C**  
**Fourth Bedroom**  
 - replaces loft  
 - primary walk-in closet reduced  
 - not available with option #3A alternate primary ensuite



**OPTION #1D**  
**Exterior Side Entry to Basement**  
 - lot type grade permitting

**OPTION #4B**  
**9'-0" Upper Floor Ceiling**  
 - all upper floor windows to be increased in height  
 - subject to maximum bylaw height restrictions