
THE CASCADE



SHINGLE S1



FARMHOUSE S3



FARMHOUSE S4



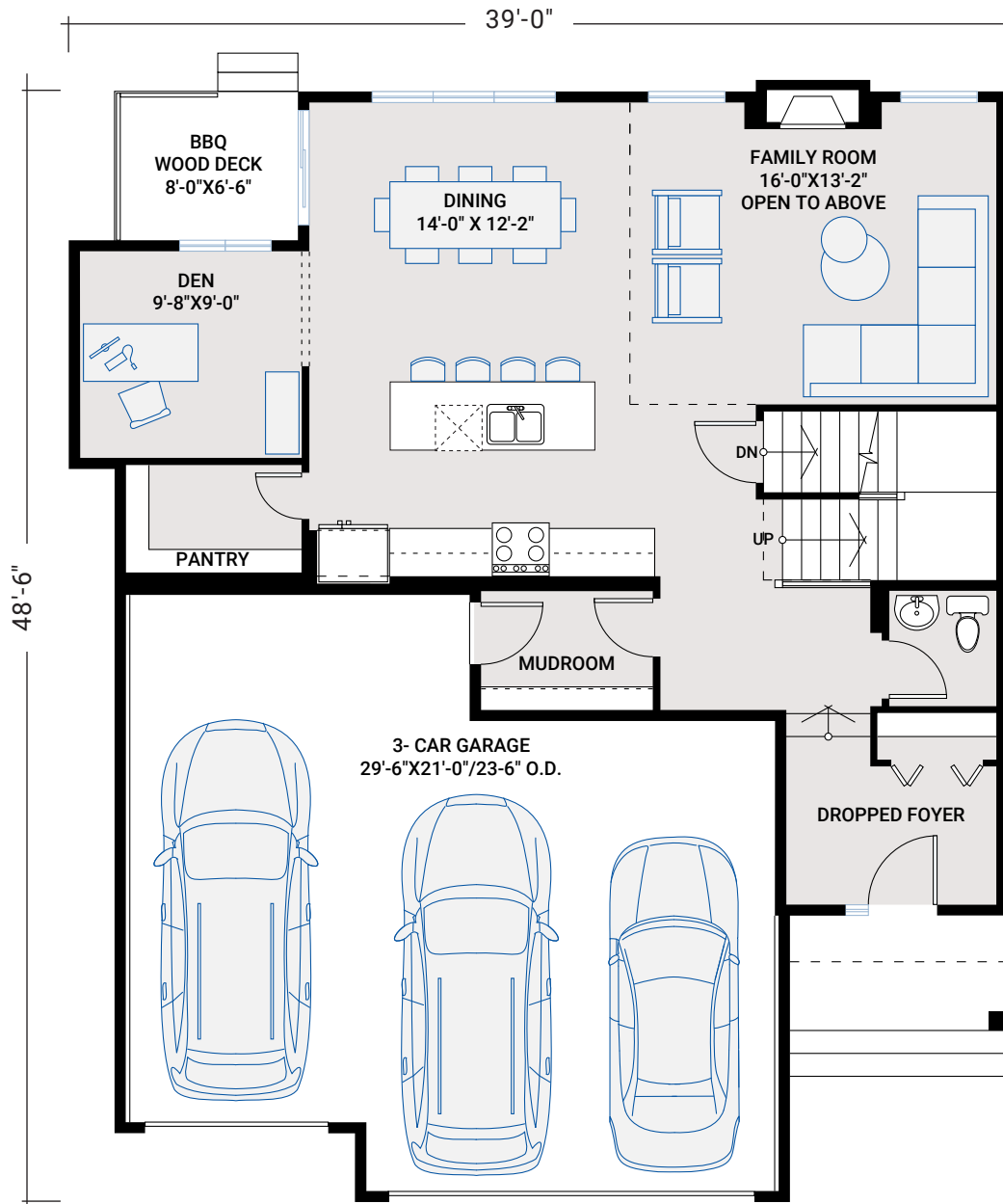
SHAWNEE PARK

2,414 SQ FT | 3 BEDS | 2.5 BATHS

CARDEL
HOMES

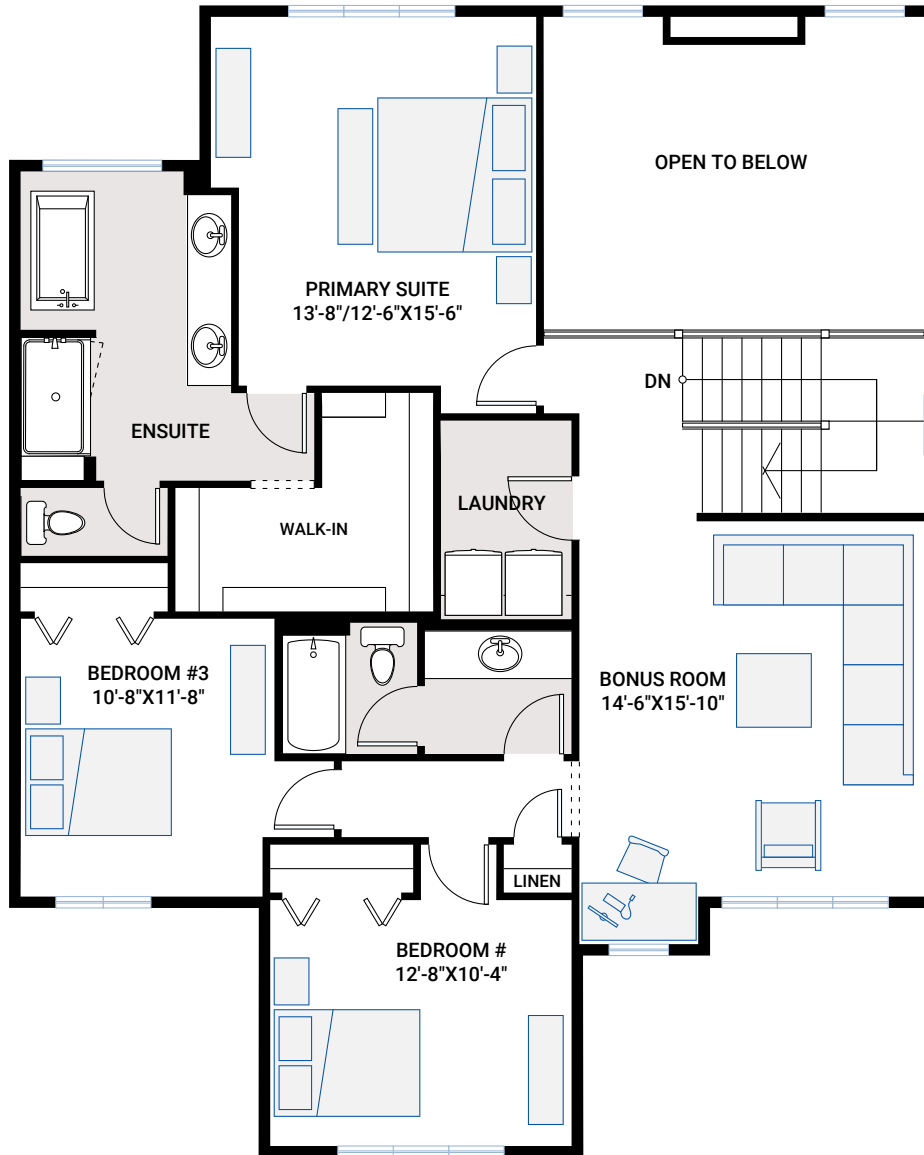
MAIN FLOOR

1,042 SQ FT



UPPER FLOOR

1,372 SQ FT

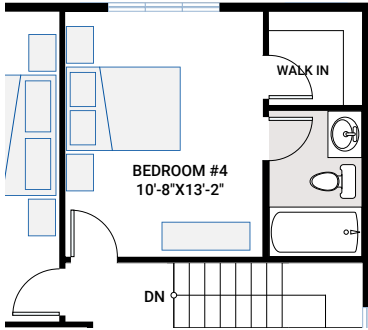


SHAWNEE PARK

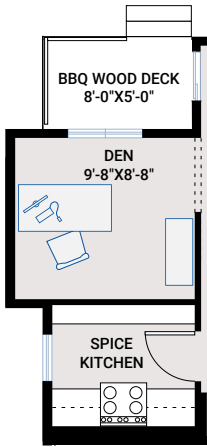
THE CASCADE

CARDEL
HOMES

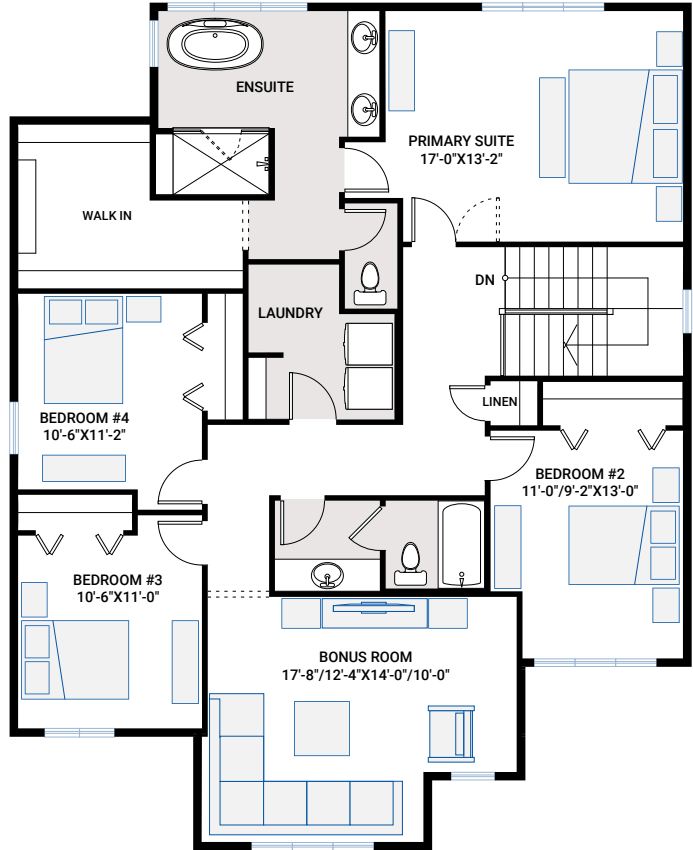
FLOORPLAN OPTIONS



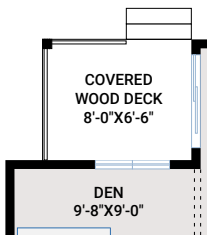
OPTION #04A
Alternate Upper Floor With Fourth Bedroom
 - adds 211 sq ft to upper floor
 - remove open to below in family room
 - adds fourth bedroom with full bath



OPTION #02A
Alternate Kitchen - Spice Kitchen
 - main floor - adds 12 sq ft
 - upper floor - adds 12 sq ft
 - BBQ deck becomes 40 sq ft



OPTION #04B
Alternate Upper Floor
 - adds 278 sq ft to upper floor
 - not available with Elevation S3



OPTION #05A
Covered Rear Deck

FEBRUARY 2023 | CASCADE | Actual plan may vary from brochure. Square footage is calculated using local Home Builder Association guidelines. Construction square footage is 1,042 (main); 1,294 (upper) for 2,336 total. This plan is published by Cardel Homes. Dimensions and square footage shown are approximate and subject to change without notice. All rights reserved including the rights of reproduction in whole or part without permission of Publisher E.&O.E. Note: Elevation details are community-specific and are artistic representation only. Please ask your sales representative for further information.