
🕒 QUICK POSSESSION



FARMHOUSE FS3

Artistic representation only. Actual colours may vary.

CAMBRIA 2

FIRESIDE

156 EMBERSIDE HOLLOW

2,118 SQ FT

**MAIN FLOOR
FLEX ROOM**

**OVERSIZED GARAGE
WITH WORKSPACE**

**UPPER FLOOR
BONUS ROOM**

FIRESIDE
OF COCHRANE

2,118 SQ FT | 3 BED | 2.5 BATH

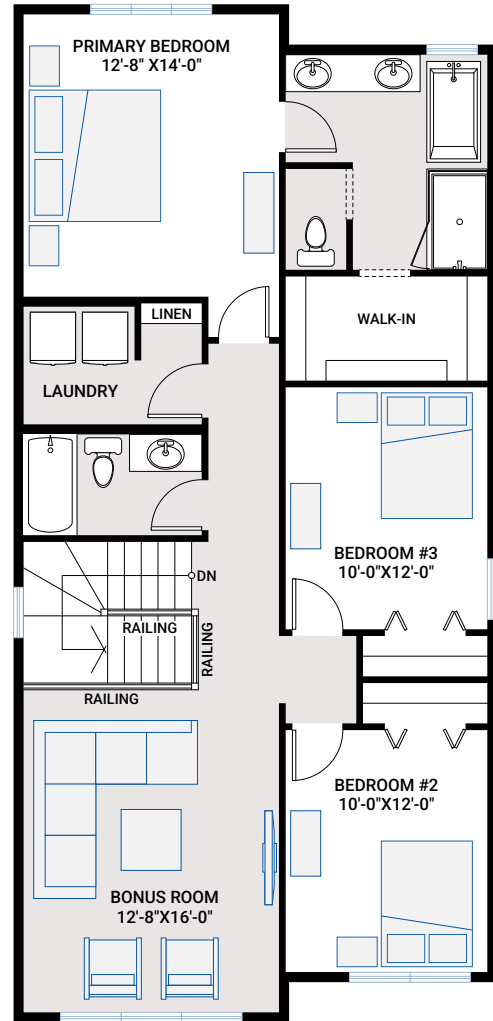
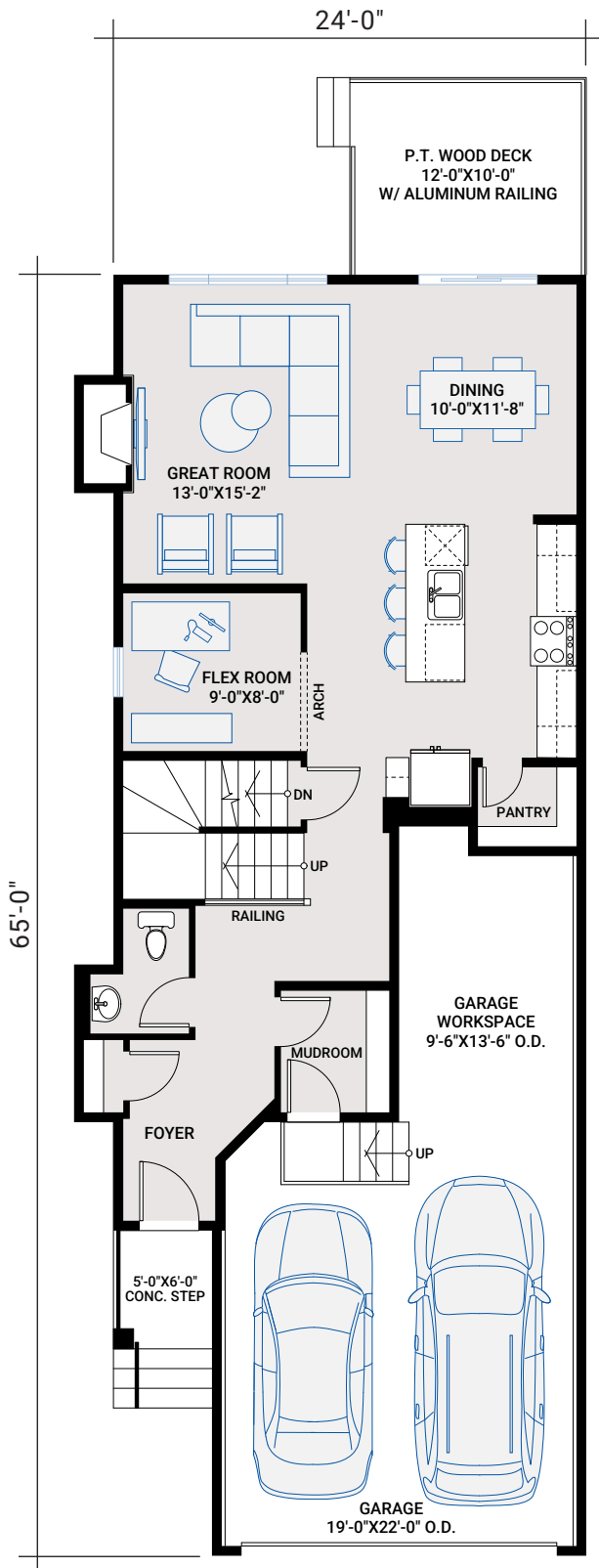
CARDEL
HOMES

MAIN FLOOR

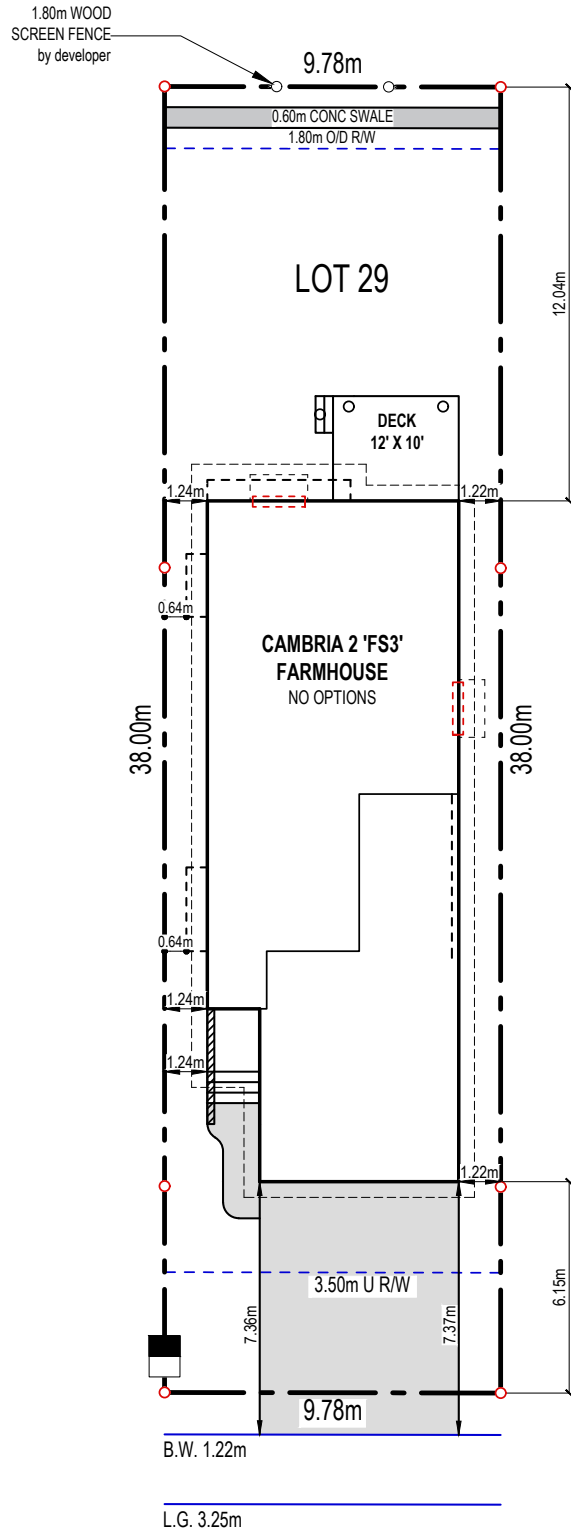
947 SQ FT

UPPER FLOOR

1,171 SQ FT



PLOT PLAN



EMBERSIDE HOLLOW

INCLUDED FEATURES

- Main floor flex room
- Oversized garage with workspace
- Great room with gas fireplace
- Upper floor bonus room
- Upper floor laundry room
- 9' main floor ceiling
- 9' basement foundation walls
- LVP flooring throughout main floor
- LVP flooring throughout upper floor bonus room and hallway
- Upgraded tile flooring in bathrooms and laundry room
- Upgraded wall tile package throughout
- Quartz countertops throughout
- Custom cabinetry package including:
 - Soft close hardware
 - Dovetail drawer construction
 - Matte black hardware
- Stainless steel appliances:
 - Samsung French door counter-depth refrigerator
 - Samsung electric range
 - Samsung smart dishwasher
 - Built-in Whirlpool microwave
 - Aura Lucca 30" wall-mount chimney hood fan
- Blanco granite double bowl kitchen sink in Coal Black
- Upgraded railing
- Upgraded Delta Trinsic kitchen faucet in matte black
- Moen plumbing faucets and fixtures in matte black
- Samsung front load washer and dryer
- Heat recovery ventilation system
- Cardel's premium spray foam attic insulation assembly
- Rough-in gas line to kitchen stove and deck

INTERIOR COLOUR PALETTE

