
THE CADEN



FARMHOUSE A2



CANADIANA A1



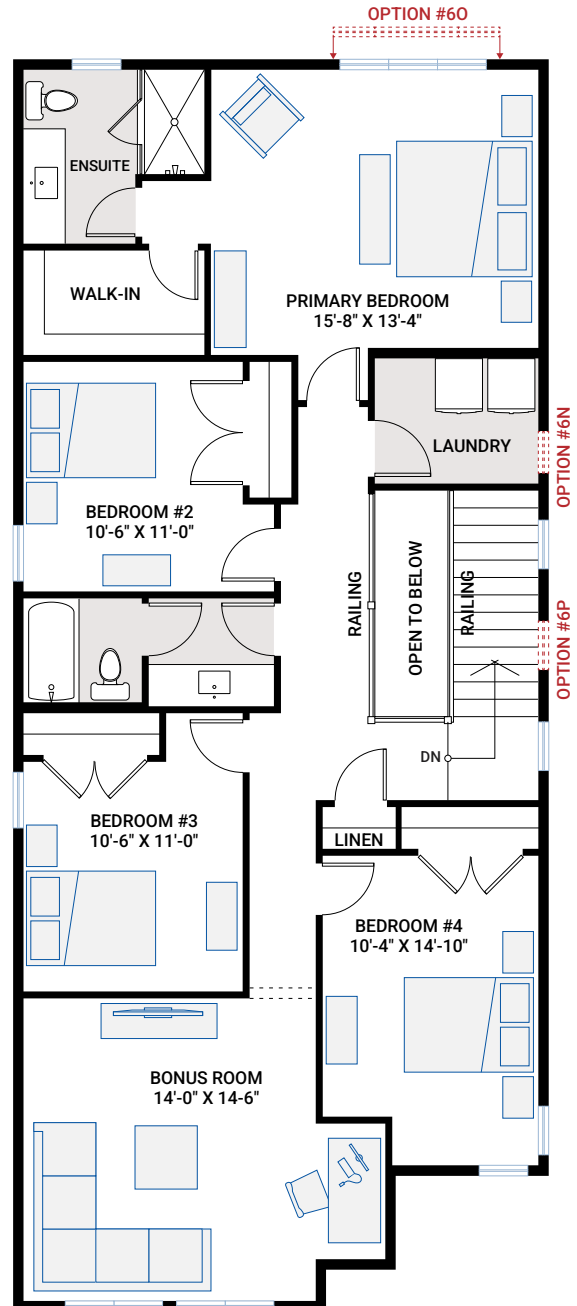
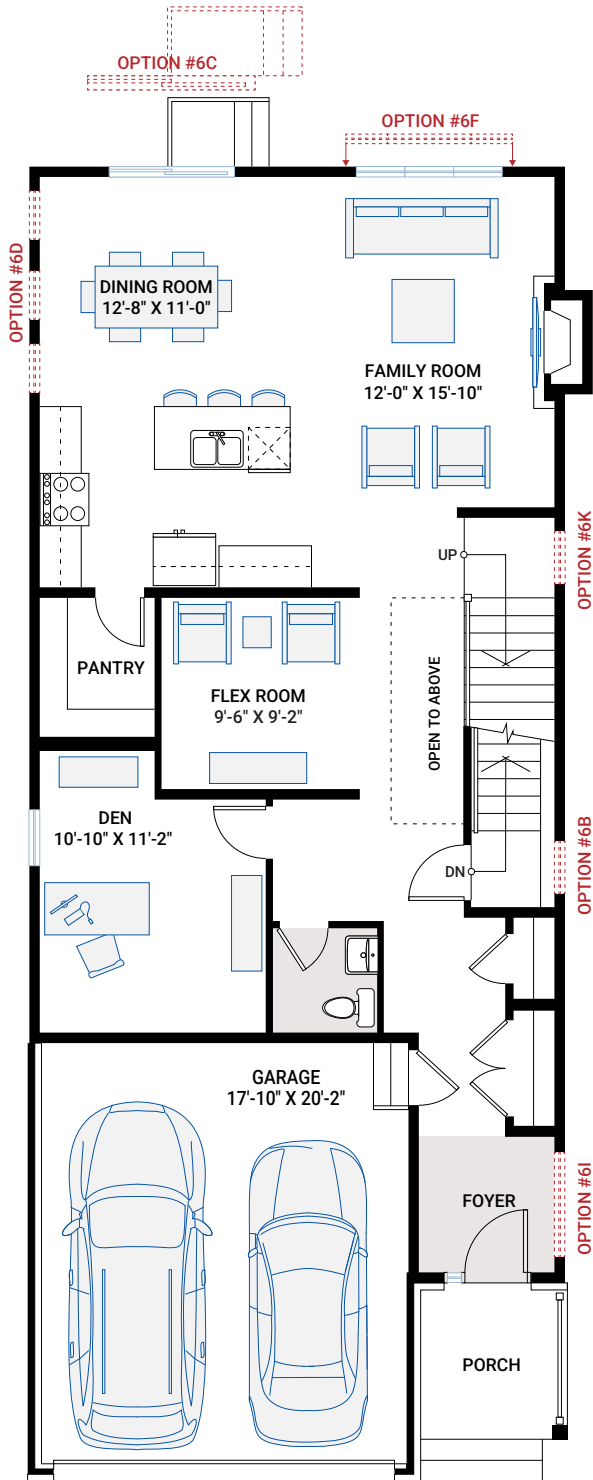
MODERN A3

MAIN FLOOR

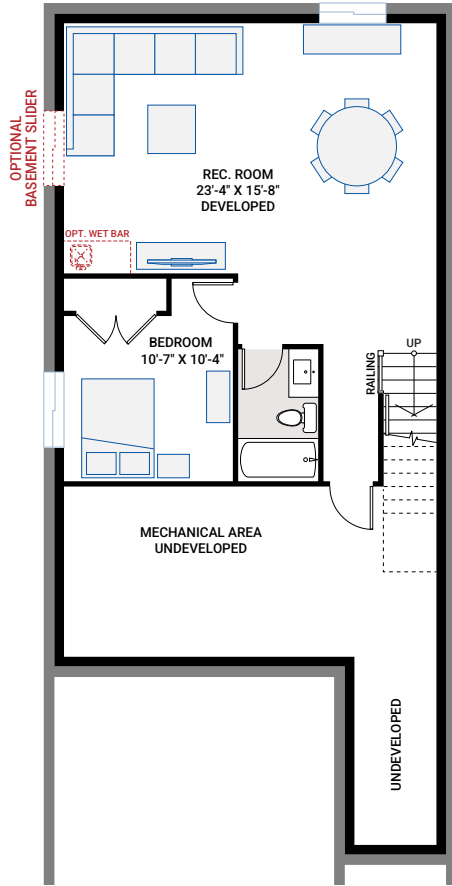
1,187 SQ FT

UPPER FLOOR

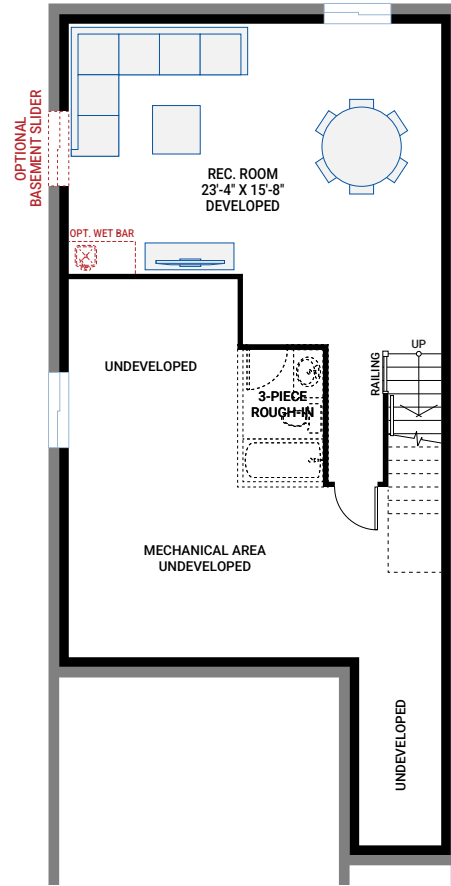
1,462 SQ FT



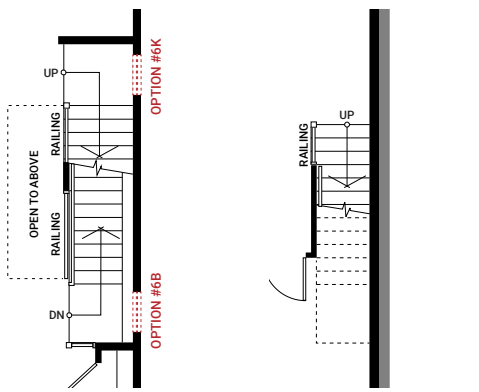
BASEMENT OPTIONS



Option #1B
Developed Basement
 - adds 745 sq ft
 - includes Option #1A - Developed Basement Stairs

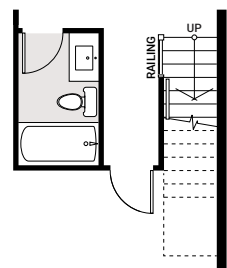


Option #1C
Developed Rec Room
 - adds 543 sq ft
 - includes Option #1A - Developed Basement Stairs



Partial Foundation Plan Partial Main Floor Plan

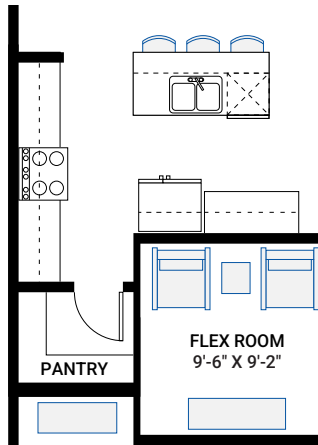
OPTION #1A
Developed Basement Stairs
 - additional 72 sq ft basement landing



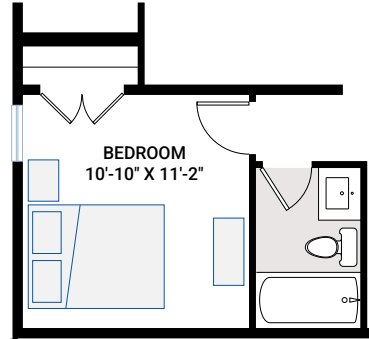
OPTION #1F
Developed Basement Bathroom
 - only available with Option 1C
 - additional 46 sq ft Developed Basement

OPTION #4A
9'-0\"/>

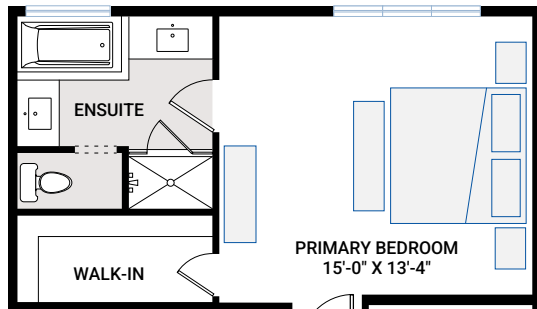
FLOORPLAN OPTIONS



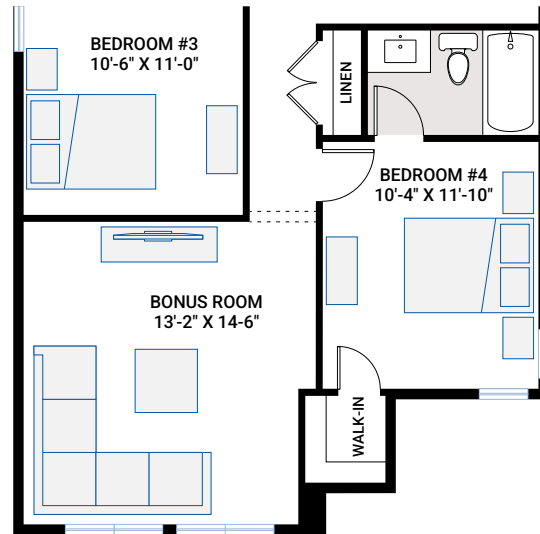
OPTION #2A
Alternate Kitchen



OPTION #2C
Main Floor Bedroom & Full Bath



OPTION #3A
Alternate Ensuite



OPTION #3D
Fourth Bedroom Suite
- bathroom added to Bedroom #4
- front windows as per elevation

OPTION #4B
9'-0" Upper Floor Ceiling
- all Upper Floor windows increased in height
- subject to maximum bylaw height restrictions