

---

# THE BYRON

---



MODERN A3



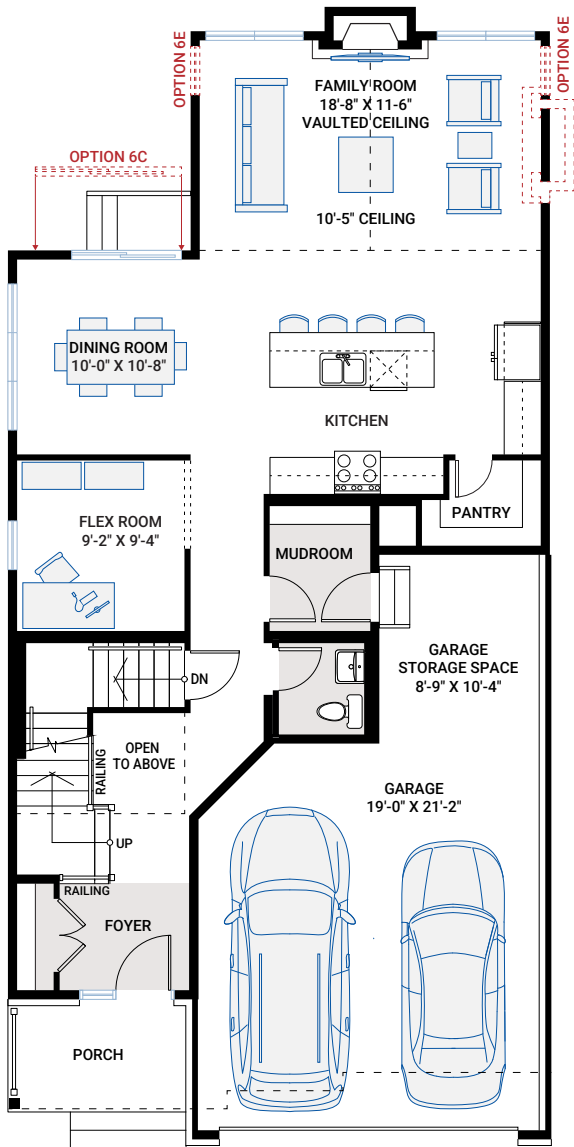
FARMHOUSE A2



CANADIANA A1

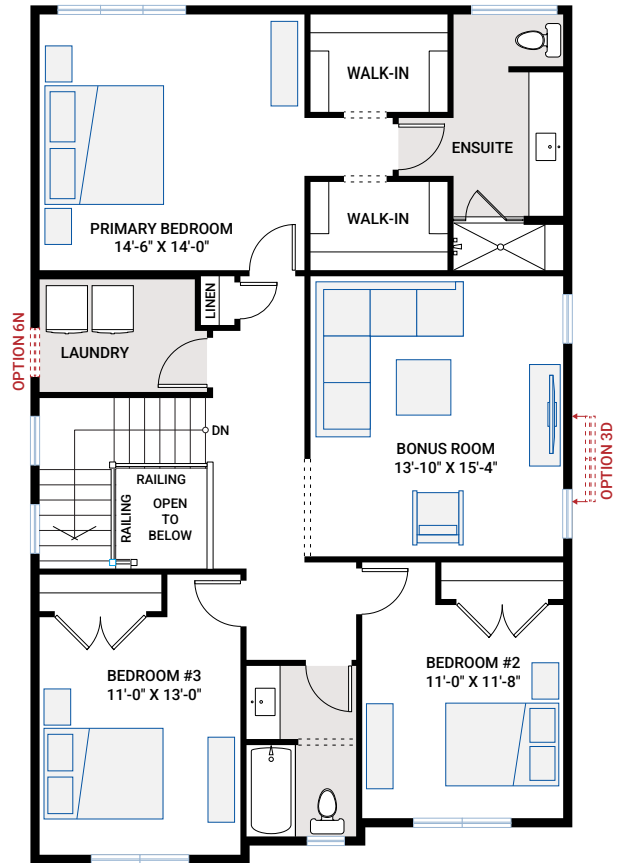
# MAIN FLOOR

1,098 SQ FT

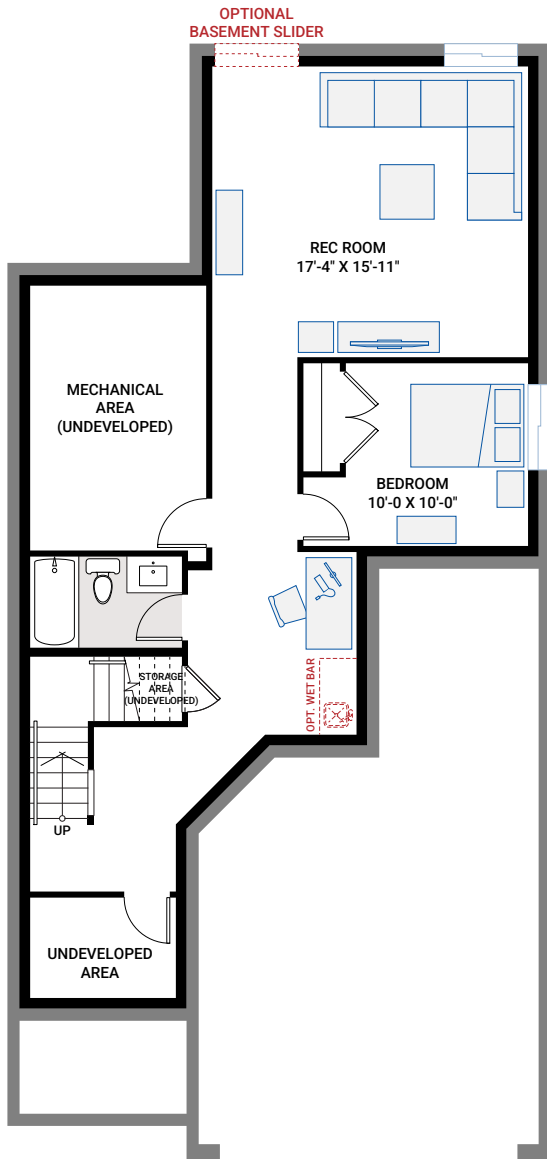


# UPPER FLOOR

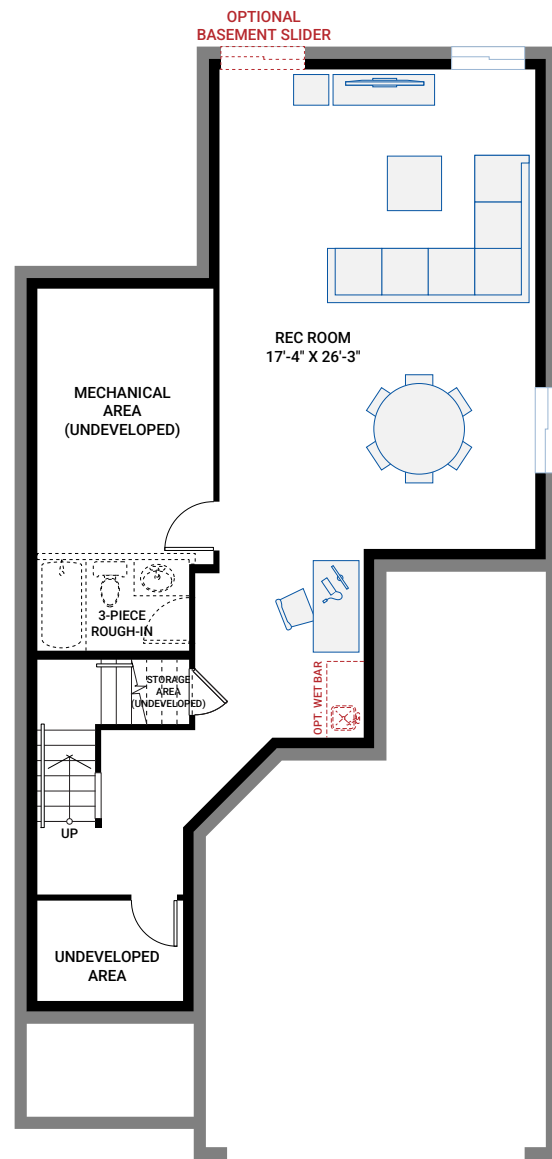
1,351 SQ FT



# BASEMENT OPTIONS

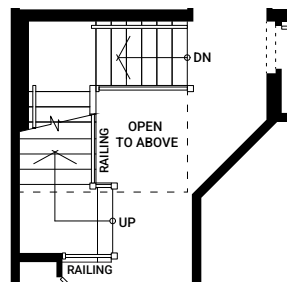


**OPTION #1B**  
**Developed Basement**  
 - additional 799 sq ft Developed Basement  
 - includes Option #1A - Developed Basement Stairs

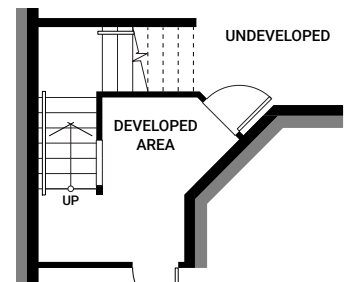


**OPTION #1C**  
**Developed Basement Rec. Room**  
 - additional 749 sq ft Developed Basement  
 - includes Option #1A - Developed Basement Stairs

**OPTION #4A**  
**9'-0" Basement Ceiling**  
 - adds two risers to Basement stairs. Where Basement is entirely undeveloped add two risers to bottom run. With Option #1A, 1B and 1C add landing and one tread (total two risers).



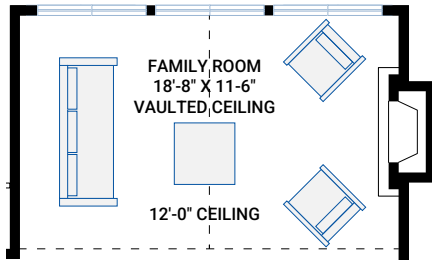
Partial Basement Plan



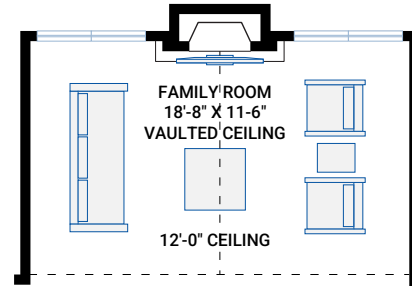
Partial Main Floor Plan

**OPTION #1A**  
**Developed Basement Stairs**  
 - adds 86 sq ft to Basement

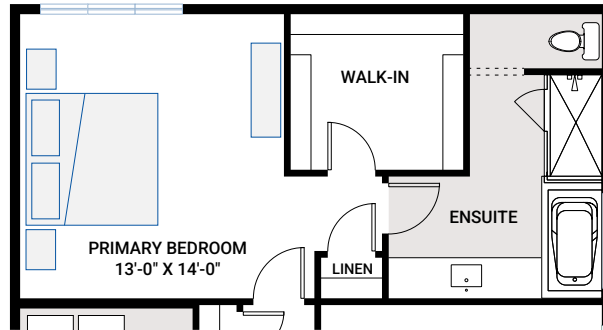
# FLOORPLAN OPTIONS



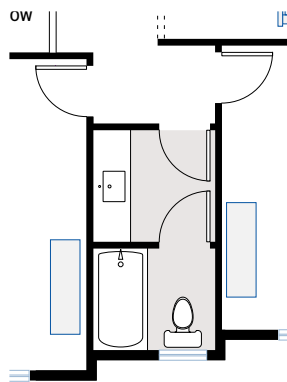
**OPTION #2E**  
**Family Room Side Fireplace**  
 - not available with option 2H  
 - family room ceiling increased to 12' high  
 - windows on rear elevation change  
 - ensuite transom window reduced



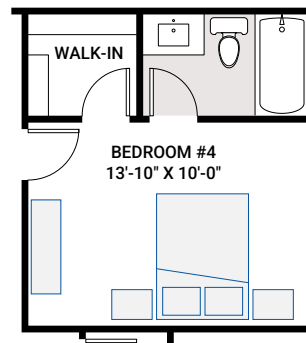
**OPTION #2H**  
**12' Family Room Ceiling**  
 - not available with option 2E  
 - ensuite transom window reduced



**OPTION #3A**  
**Alternate Ensuite**  
 - ensuite window relocated to side wall



**OPTION #3B**  
**Alternate Main Bath**



**OPTION #3D**  
**Fourth Bedroom Suite**  
 - replaces Bonus Room

**OPTION #4B**  
**9'-0" Upper Floor Ceiling**  
 - all Upper Floor windows increased in height  
 - subject to maximum bylaw height restrictions