

---

# QUICK MOVE-IN

---



ELEVATION B2

**THE ASPEN**

125 SHALE STREET (UNIT 516)

---

**3 BEDROOM  
+ LOFT**

**BBQ DECK**

**QUARTZ  
THROUGHOUT**

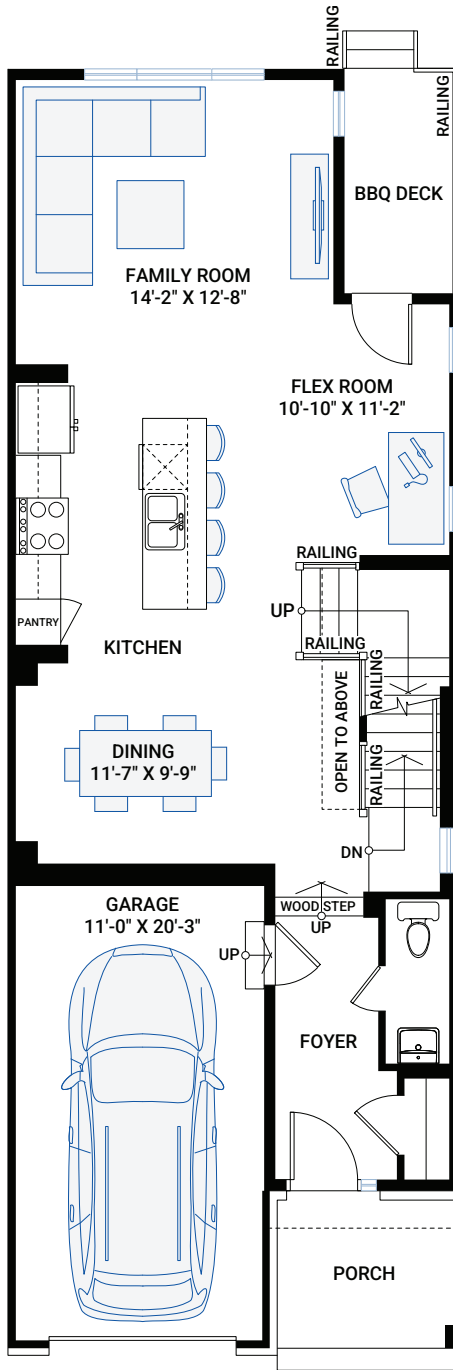


2,246 SQ FT | 3 BED + LOFT | 2.5 BATH

**CARDEL**  
HOMES

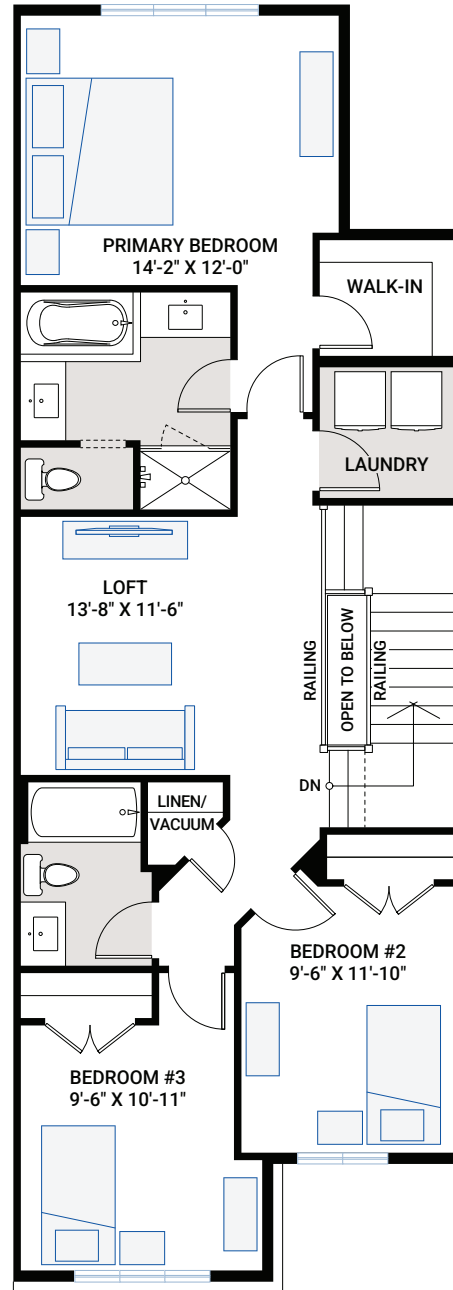
# MAIN FLOOR

803 SQ FT



# UPPER FLOOR

1,034 SQ FT



FOR MORE INFORMATION CONTACT: THANG NGUYEN, New Home Consultant  
thang.nguyen@cardelhomes.com | P: 343.573.2464

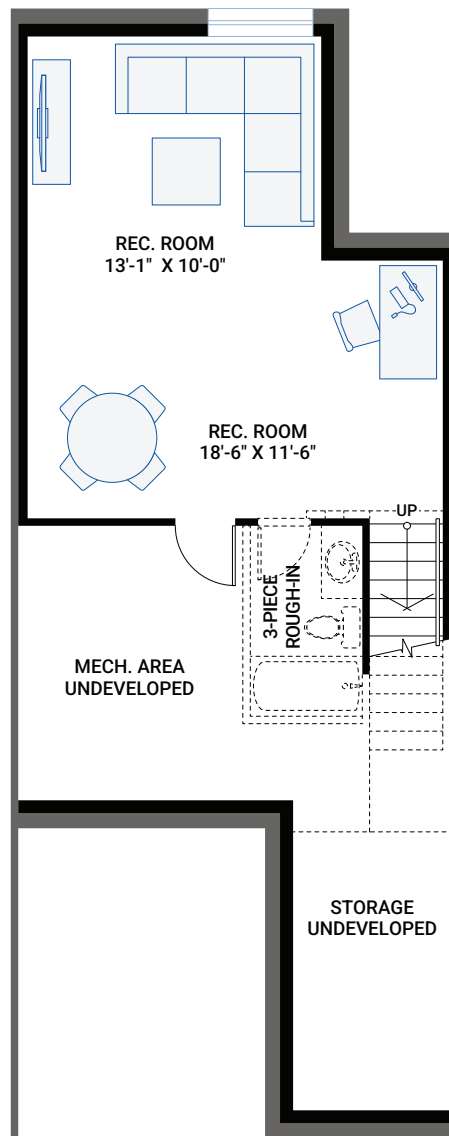


2,246 SQ FT | 3 BED + LOFT | 2.5 BATH



# BASEMENT

409 SQ FT



- Open-concept floorplan with main floor flex space
- Upgraded luxury vinyl plank throughout main floor
- Bright interior with Designer selections including;
  - Upgraded white shaker doors throughout
  - Quartz in kitchen, ensuite and main bathroom
  - Extended upper cabinets
  - Soft close doors and drawers with black hardware
- Stacked subway tile pattern in kitchen
- Stacked square tile pattern in bathrooms
- 4 LG kitchen appliances included (fridge, stove, dishwasher and OTR microwave)
- Second floor laundry room
- Developed basement rec room with 3-piece rough-in for future bathroom

# INTERIOR COLOUR SCHEME – J



\* All sizes are nominal. The colours represented on this page may vary from the actual product colours. Actual samples can be viewed by appointment.