
THE ALTON



FARMHOUSE A2



CANADIANA A1

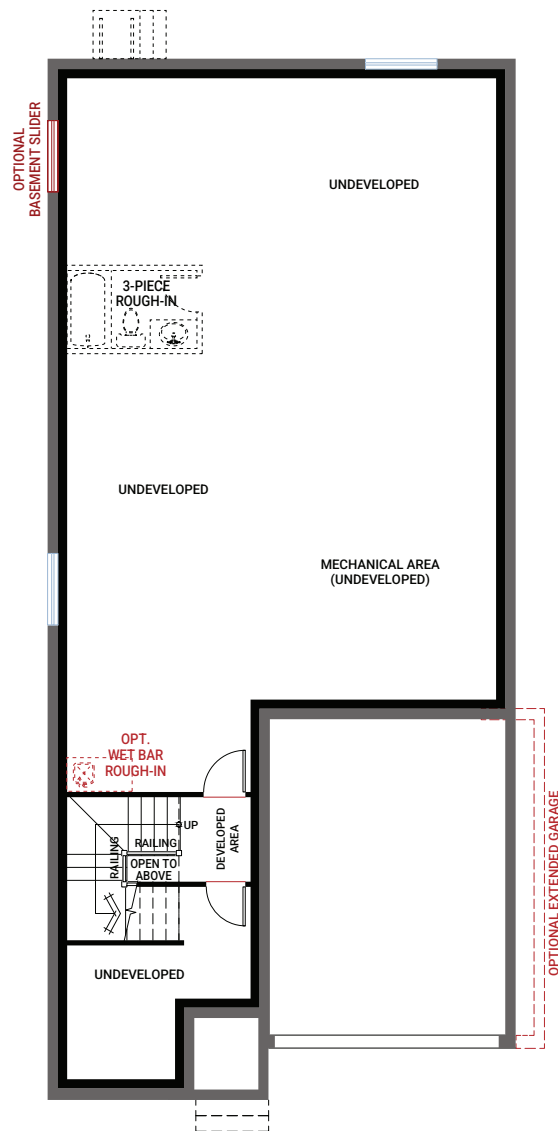
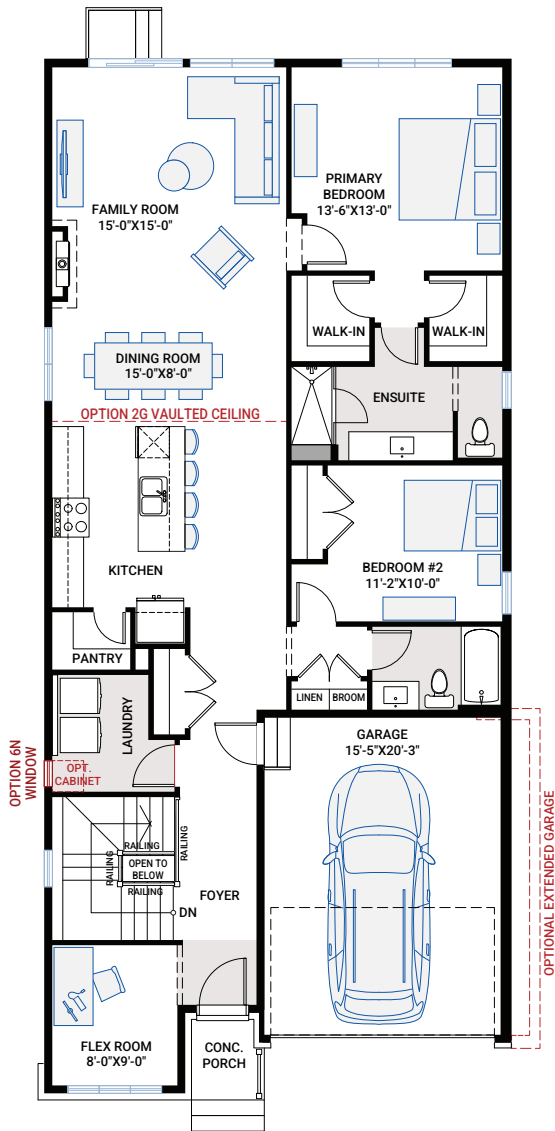


MODERN A3

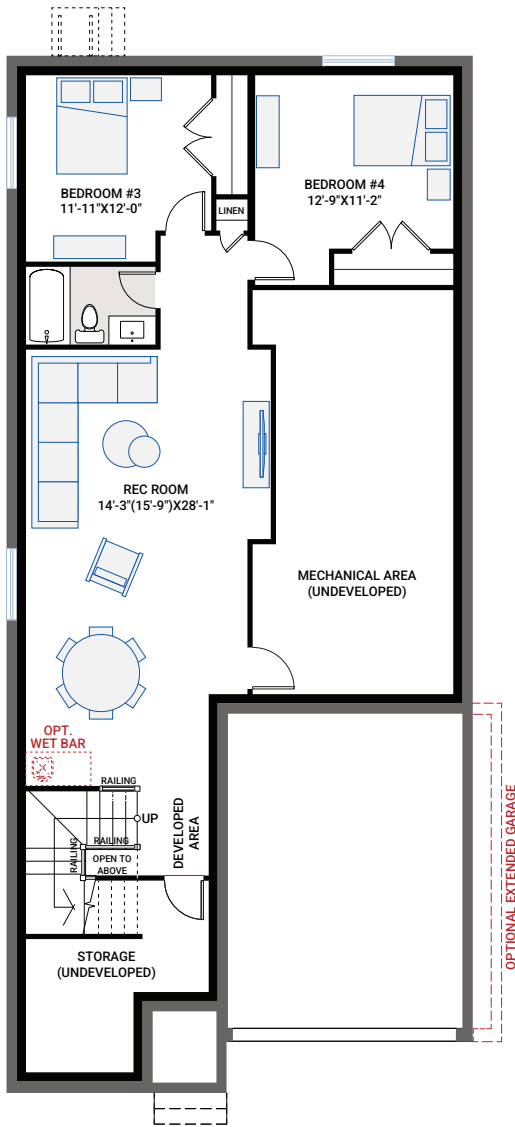
MAIN FLOOR

1,588 SQ FT

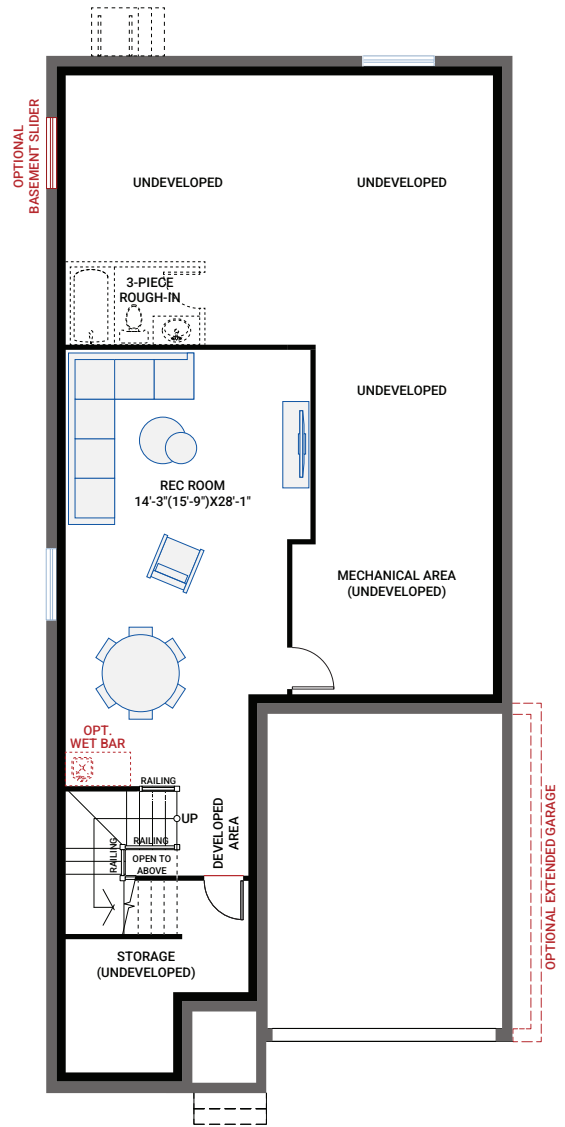
UNDEVELOPED BASEMENT



BASEMENT OPTIONS

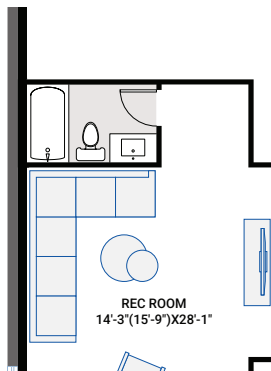


OPTION #1B
Developed Basement
 - additional 1,014 sq ft Developed Basement
 - includes Option #1A - Developed Basement Stairs



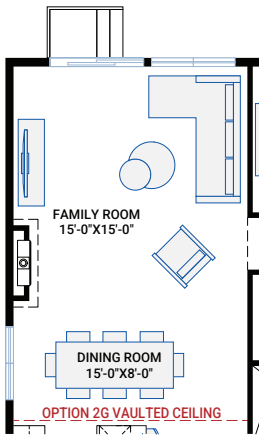
OPTION #1C
Developed Basement Rec. Room
 - additional 506 sq ft Developed Basement
 - includes Option #1A - Developed Basement Stairs

OPTION #4A
9'-0" Basement Ceiling
 - adds two risers to basement stairs;
 consisting of, an additional winder
 and 1 riser at bottom of stairs.

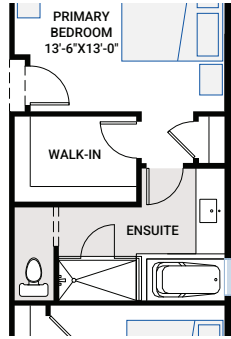


OPTION #1F
Developed Basement Bathroom
 - Only available with Option #1C
 - Additional 85 sq ft Developed Basement

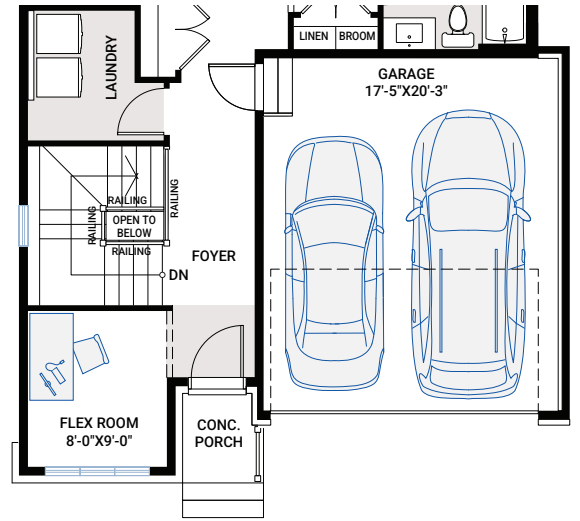
FLOORPLAN OPTIONS



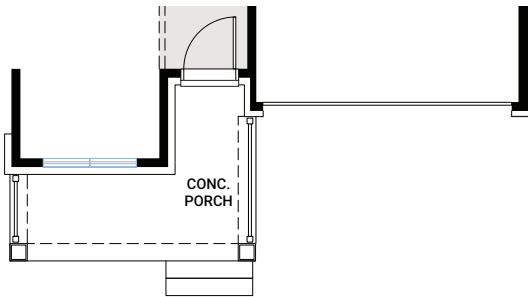
OPTION #2G
Dining and Family Room
12'-2" Vaulted Ceiling



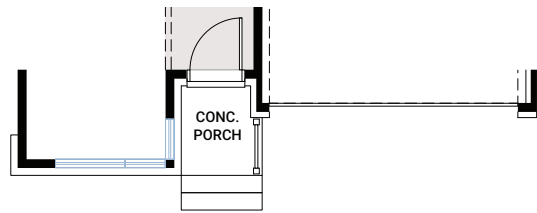
OPTION #3A
Alternate Ensuite
- not available with Option #5F - Extended
Primary Bedroom and Ensuite



OPTION #5E
Extended Garage
- additional 43 sq ft of garage
- garage widened by 2'-0"
- garage overhead door increased to 16'x8'



Farmhouse A2 Elevation - Main



Modern A3 Elevation - Main