
THE ALTON



FARMHOUSE A2



CANADIANA A1



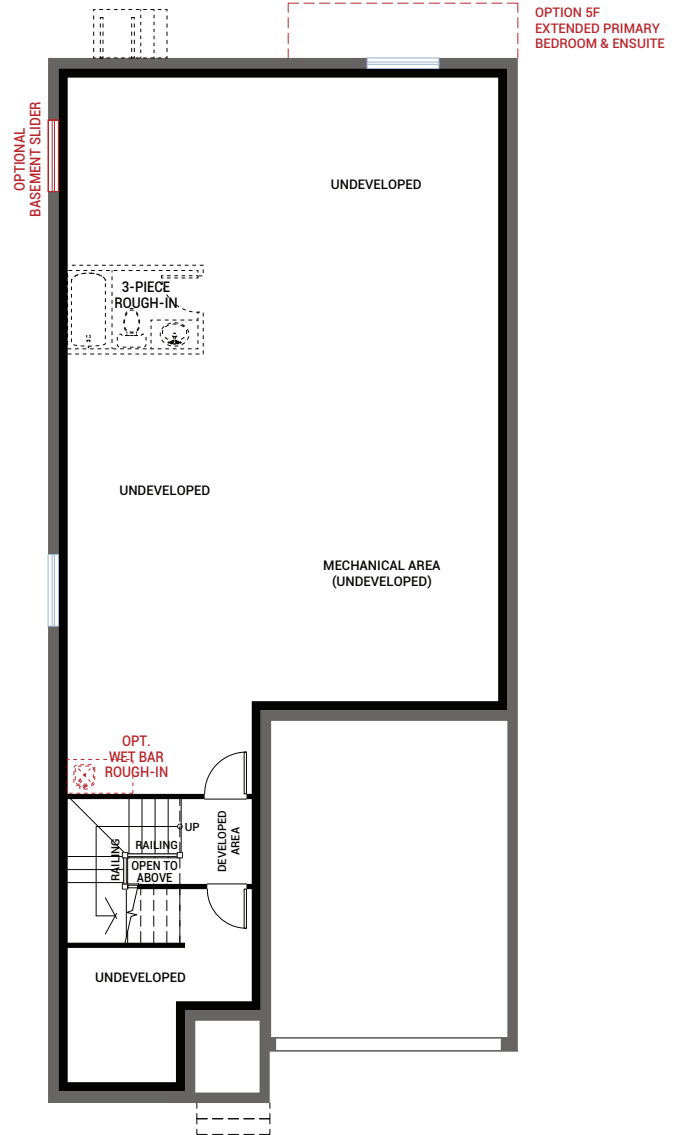
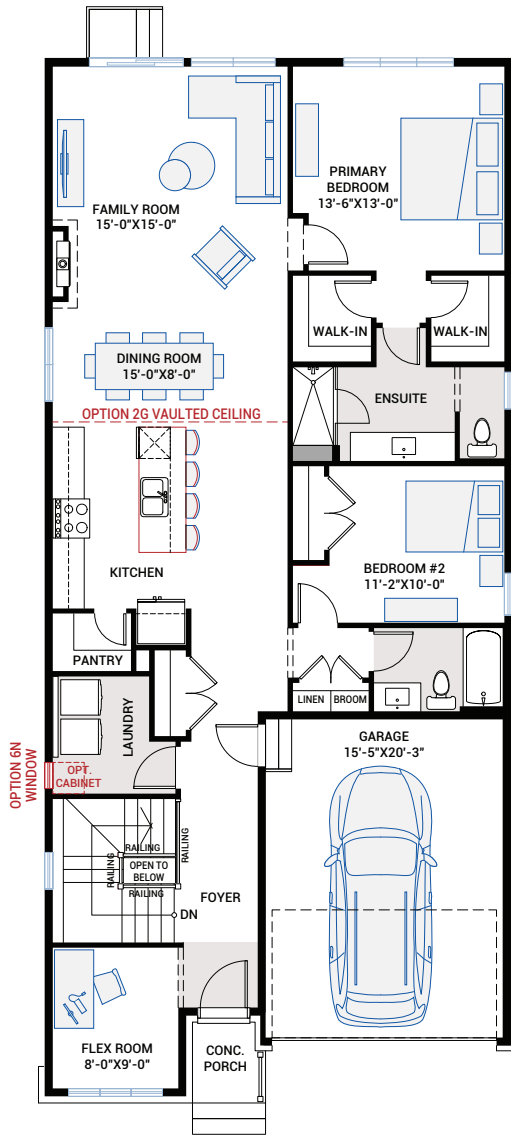
MODERN A3

MAIN FLOOR

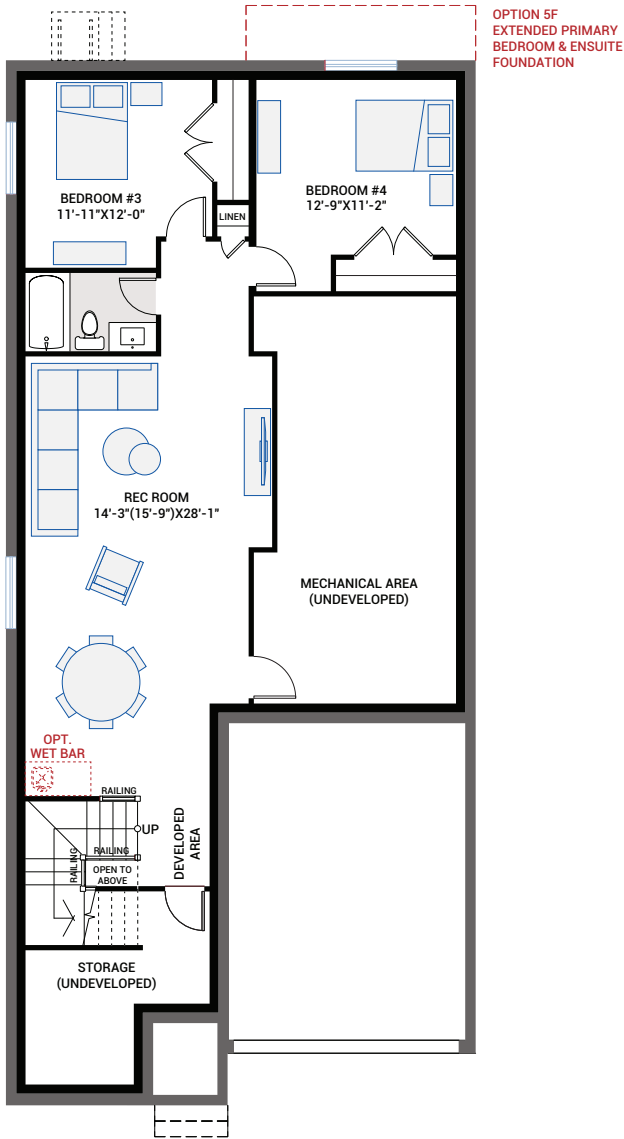
1,588 SQ FT

UNDEVELOPED BASEMENT

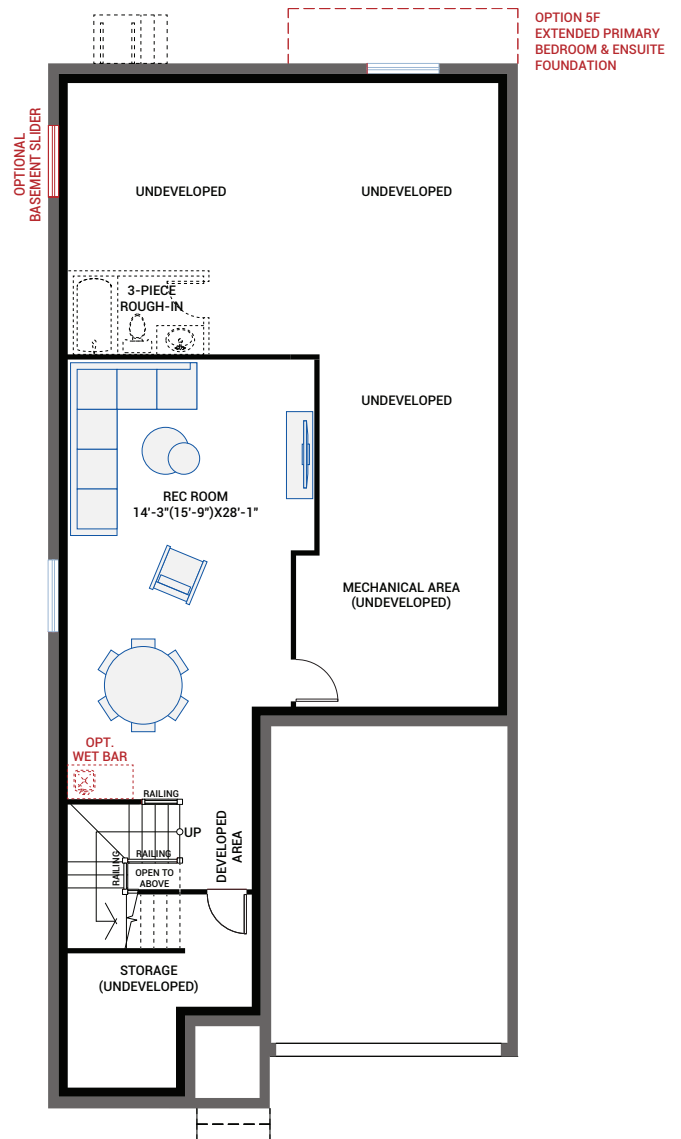
1,588 SQ FT



BASEMENT OPTIONS



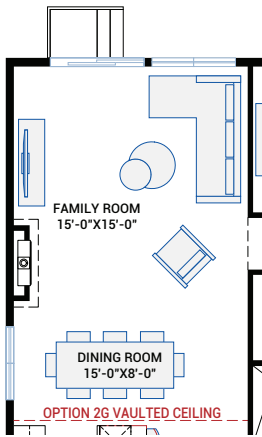
OPTION #1B
Developed Basement
 - additional 1,014 sq ft Developed Basement
 - includes Option #1A - Developed Basement Stairs



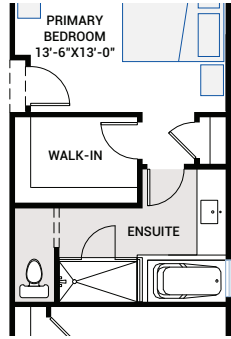
OPTION #1C
Developed Basement Rec. Room
 - additional 506 sq ft Developed Basement
 - includes Option #1A - Developed Basement Stairs

OPTION #4A
9'-0" Basement Ceiling
 - adds two risers to basement stairs; consisting of, an additional winder and 1 riser at bottom of stairs.

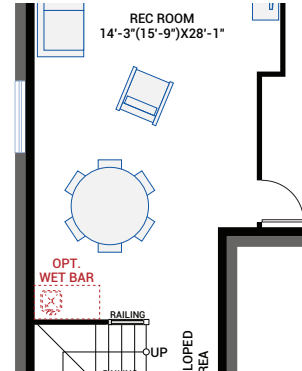
FLOORPLAN OPTIONS



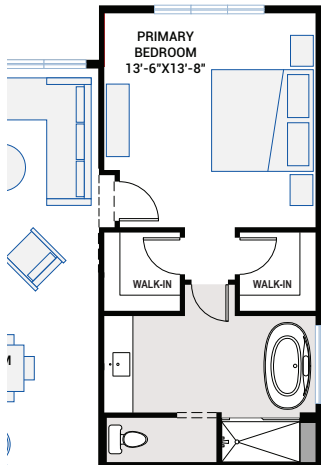
OPTION #2G
Dining and Family Room
12'-2" Vaulted Ceiling



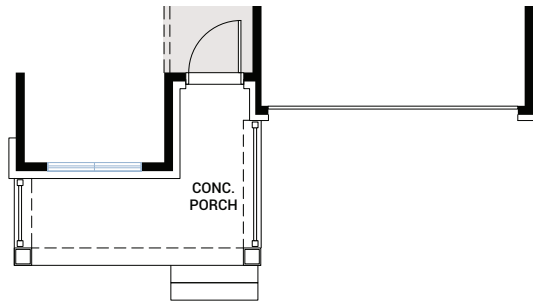
OPTION #3A
Alternate Ensuite
- not available with Option #5F -
Extended Primary Bedroom and Ensuite



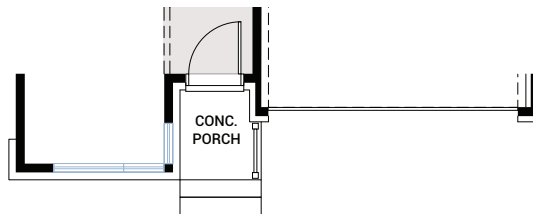
Optional Wet Bar
- available with Option #1B - Developed Basement
and Option #1C - Developed Basement Rec. Room



OPTION #5F
Extended Primary Bedroom and Ensuite
- additional 52 sq ft
- lot size permitting
- not available in conjunction with
Option #3A - Alternate Ensuite



Farmhouse A2 Elevation - Main



Modern A3 Elevation - Main