
THE ALTON



FARMHOUSE A2

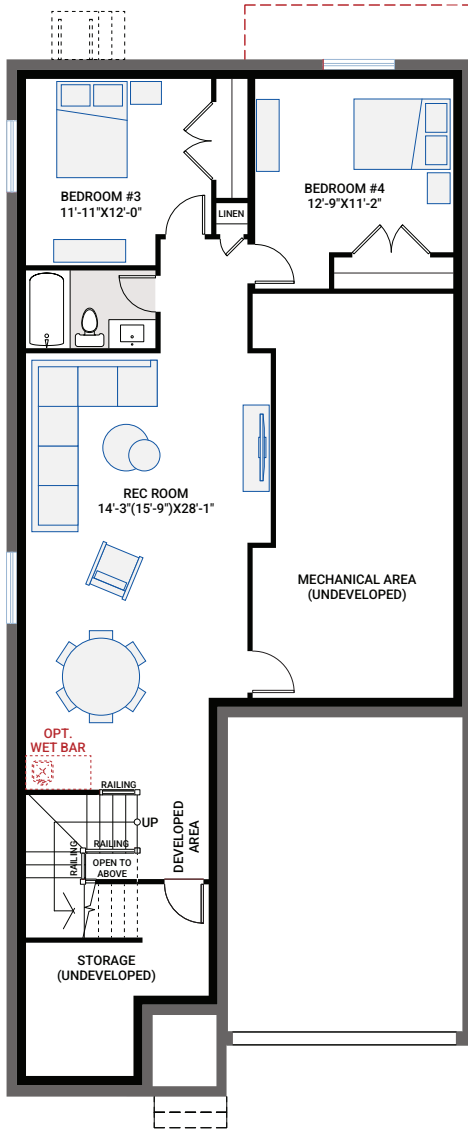


CANADIANA A1

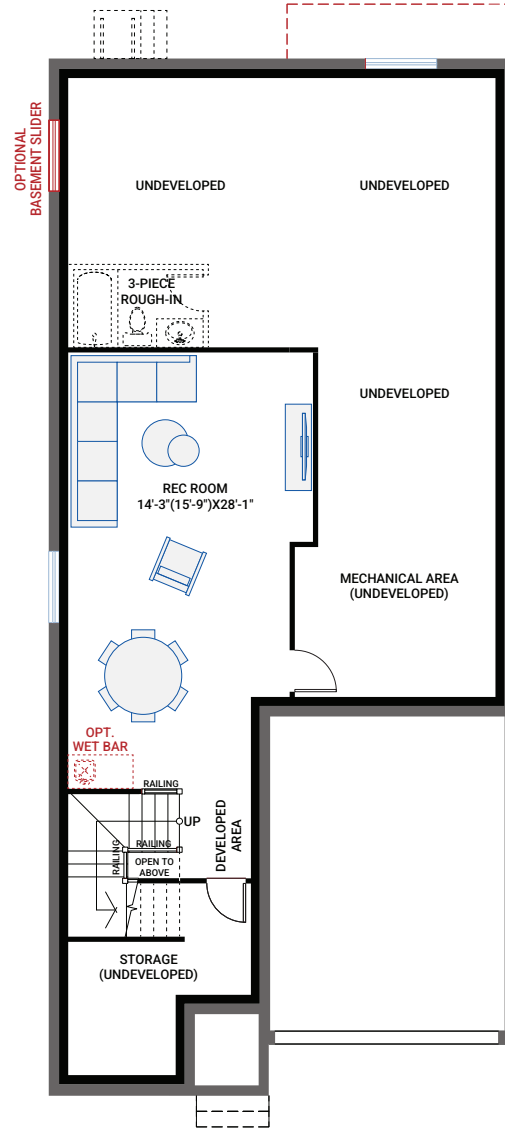


MODERN A3

BASEMENT OPTIONS



OPTION 5F
EXTENDED PRIMARY
BEDROOM & ENSUITE
FOUNDATION

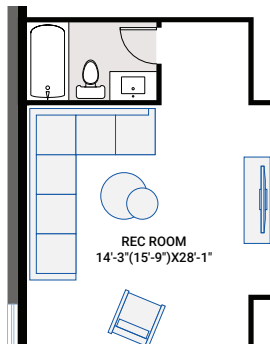


OPTION 5F
EXTENDED PRIMARY
BEDROOM & ENSUITE
FOUNDATION

OPTION #1B
Developed Basement
- additional 1,014 sq ft Developed Basement
- includes Option #1A - Developed Basement Stairs

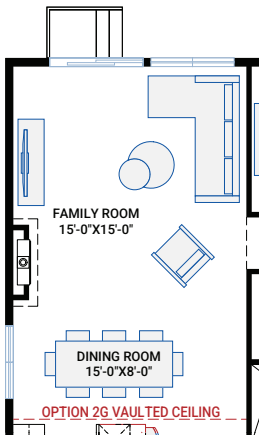
OPTION #1C
Developed Basement Rec. Room
- additional 506 sq ft Developed Basement
- includes Option #1A - Developed Basement Stairs

OPTION #4A
9'-0" Basement Ceiling
- adds two risers to basement stairs;
consisting of, an additional winder
and 1 riser at bottom of stairs.

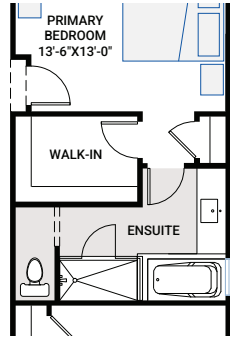


OPTION #1F
Developed Basement Bathroom
- Only available with Option #1C
- Additional 85 sq ft Developed Basement

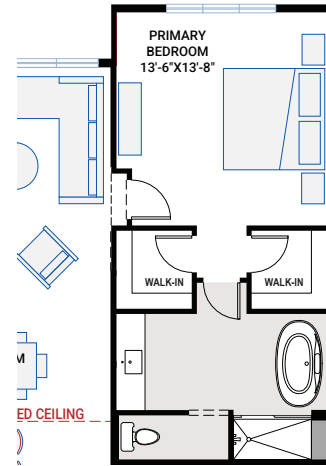
FLOORPLAN OPTIONS



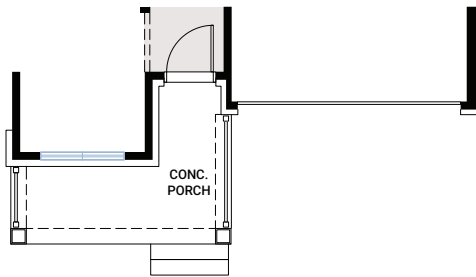
OPTION #2G
Dining and Family Room
12'-2" Vaulted Ceiling



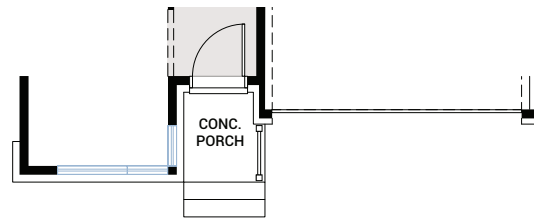
OPTION #3A
Alternate Ensuite
- not available with Option #5F -
Extended Primary Bedroom and Ensuite



OPTION #5F
Extended Primary Bedroom and Ensuite
- additional 52 sq ft
- lot size permitting
- not available in conjunction with
Option #3A - Alternate Ensuite



Farmhouse A2 Elevation - Main



Modern A3 Elevation - Main