
THE AIDEN



FARMHOUSE A2



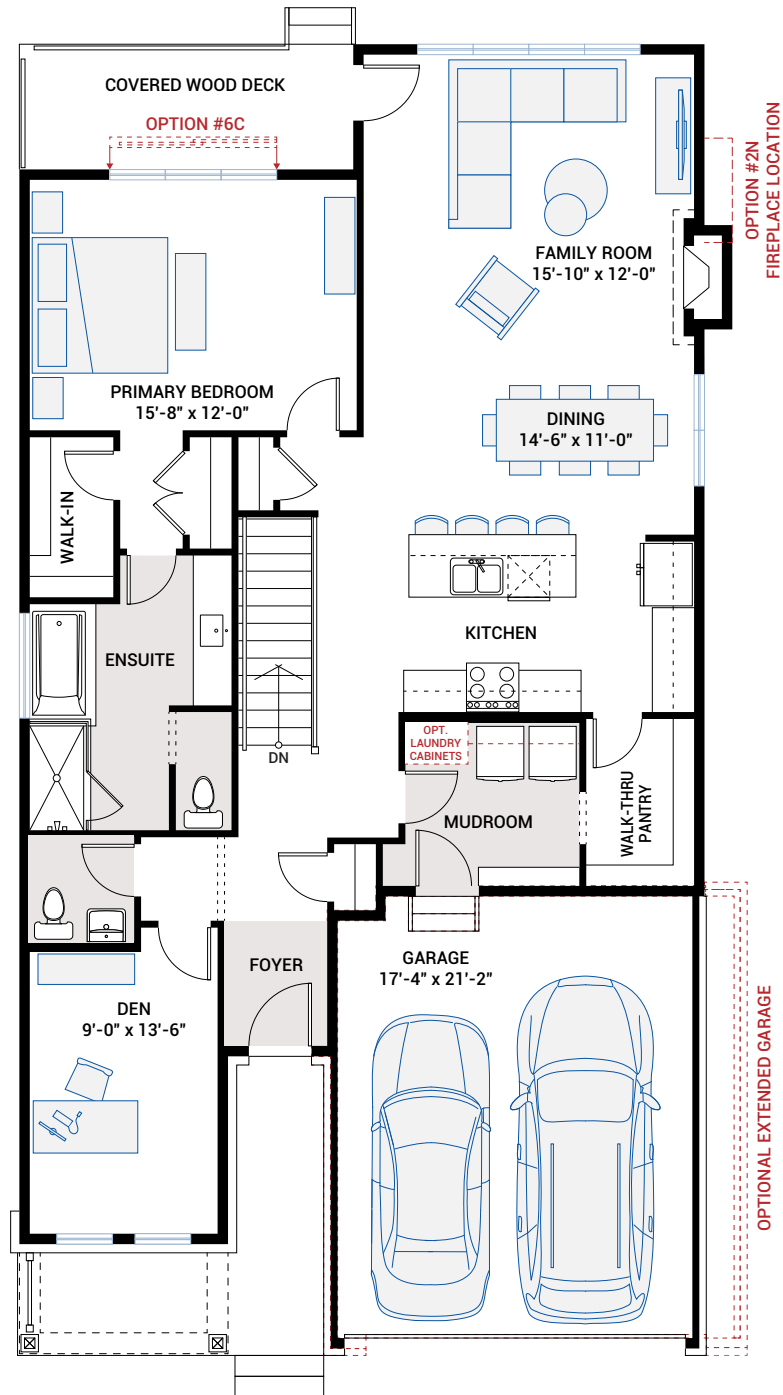
CANADIANA A1



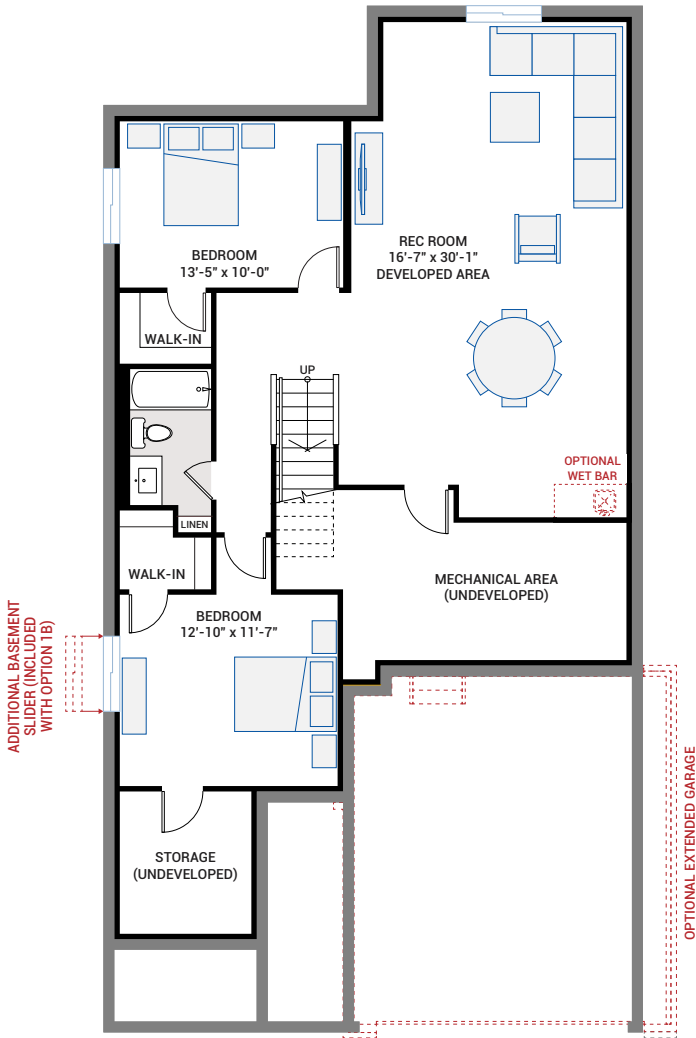
MODERN A3

MAIN FLOOR

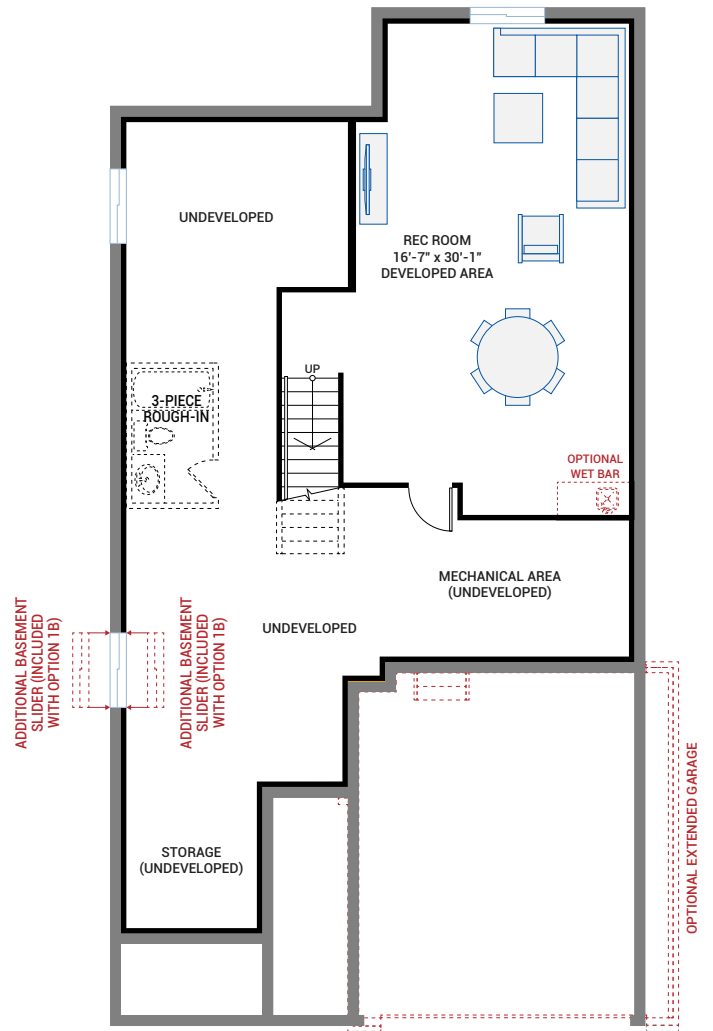
1,485 SQ FT



BASEMENT OPTIONS



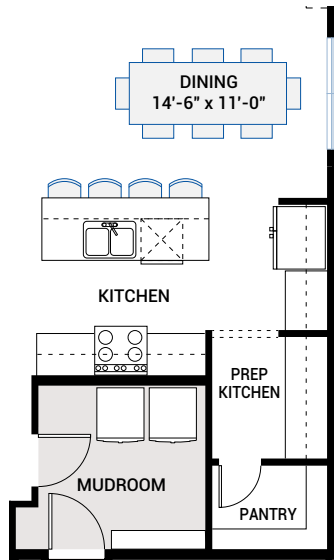
OPTION #1B
Developed Basement
 - Additional basement window in front bedroom
 - Adds 1,030 sq ft of developed basement



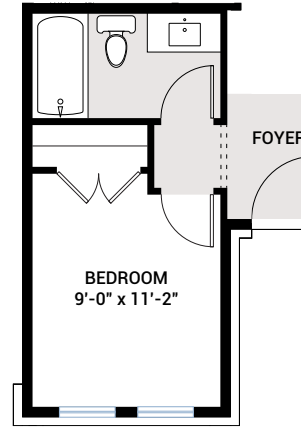
OPTION #1C
Developed Basement Rec Room
 - Adds 525 sq ft of developed basement

OPTION #4A
9'-0" Basement Ceiling
 - Adds two risers to bottom of basement stairs

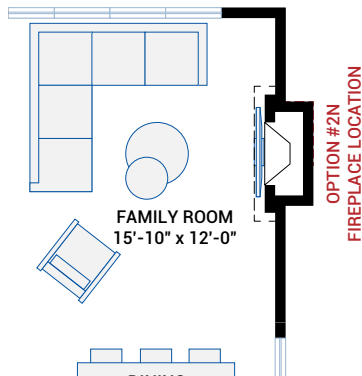
FLOORPLAN OPTIONS



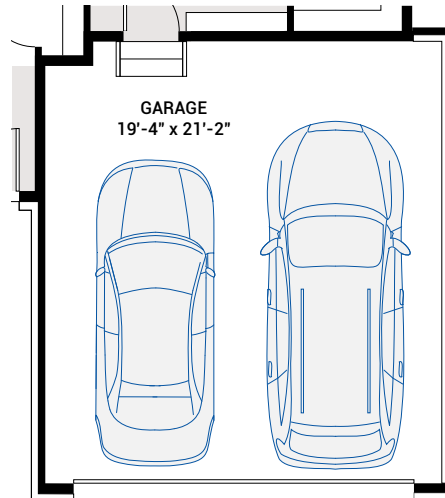
OPTION #2A
Alternate Prep Kitchen



OPTION #2C
Main Floor Bedroom & Full Bath
- Den replaced by additional bedroom



OPTION #2N
Alternate Fireplace Location



OPTION #5E
Optional Extended Garage
- Only available with Elevation A2
- Garage widened by 2'-0"
- Additional 45 sq ft of garage
- Garage door centered on wall