
Quick Possession



MODERN FARMHOUSE - AP1
EXTERIOR COLOURS ARE NOT EXACT

THE APEX 2

ALPINE PARK
9 TREELINE AVENUE SW

REAR-DETACHED
GARAGE

FULL HARDIE BOARD
EXTERIOR

CORNER
LOT

ALPINE PARK

1,668 SQ FT | 3 BED | 2.5 BATH

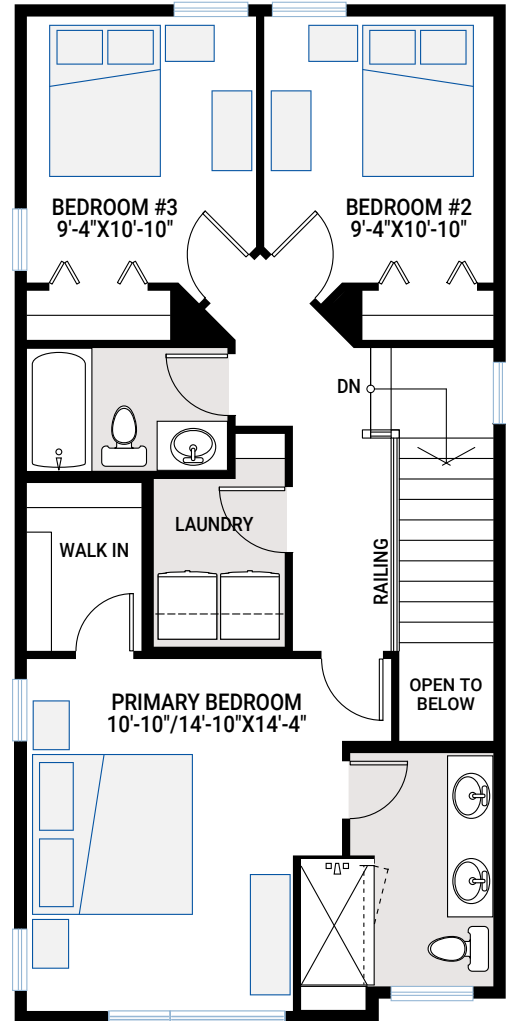
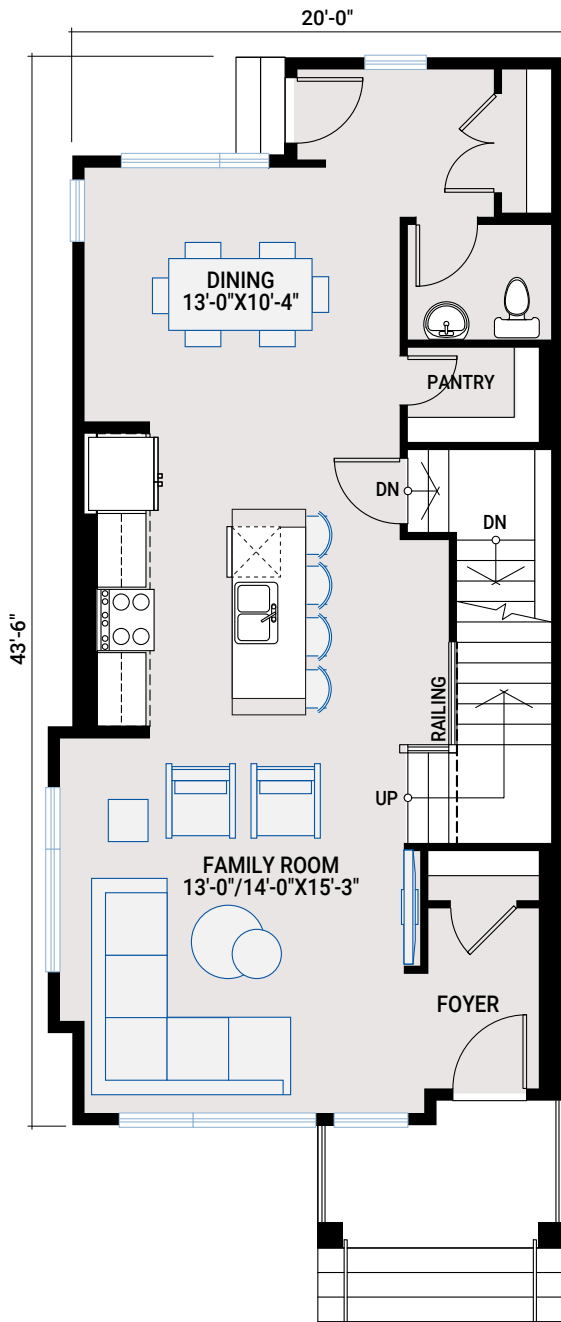
CARDEL
HOMES

MAIN FLOOR

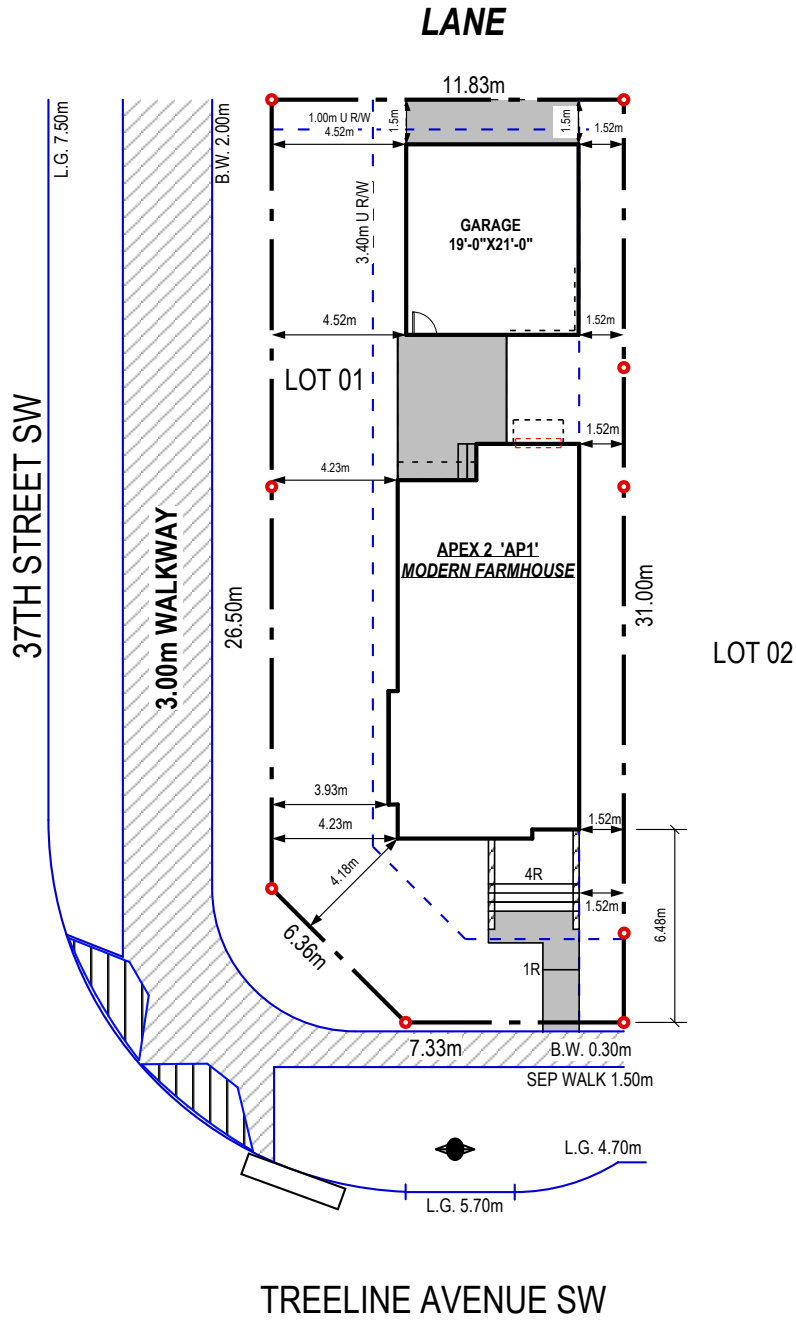
843 SQ FT

UPPER FLOOR

825 SQ FT



PLOT PLAN



INCLUDED FEATURES

- Corner Lot
- Rear detached garage
- Full Hardie Board exterior
- Modern Farmhouse architecture
- 12' x 12'/16' exposed concrete patio
- Walk-in pantry
- LVP flooring throughout main floor
- Upper floor laundry room
- 9' ceilings on main and upper floor
- 9' basement foundation walls
- Custom cabinetry package including:
 - Gentry Cabinetry in colour Cirrus with matte black hardware
 - Soft-close hardware
 - Dovetail drawer construction
- Stainless steel appliances:
 - Upgraded Aura 30" 600 CFM wall-mount chimney hood fan
 - Samsung French door counter-depth refrigerator
 - Samsung electric range
 - Samsung smart dishwasher
 - Whirlpool built-in microwave
- Quartz countertops throughout
- Upgraded railing
- Upgraded Delta kitchen faucet in matte black
- Upgraded kitchen sink to a Blanco double-bowl granite sink in soft white
- Premium-level kitchen backsplash
- Upgraded carpet throughout
- Upgraded lighting package throughout
- Premium floor tile package throughout
- Primary ensuite with:
 - Two separate ensuite sinks
 - Large tiled shower
- Upgraded Delta matte black plumbing faucets and fixtures
- Samsung front-load washer and dryer
- Upgraded matte black hardware throughout
- Premium lighting package and pot lights
- Gas line rough-in to kitchen and rear concrete pad
- 30-year shingles

INTERIOR COLOUR PALETTE

