

---

# Quick Possession

---



MODERN FARMHOUSE - AP1  
EXTERIOR COLOURS ARE NOT EXACT

THE **APEX 2**

ALPINE PARK  
9 TREELINE AVENUE SW

REAR-DETACHED  
GARAGE

FULL HARDIE BOARD  
EXTERIOR

CORNER  
LOT

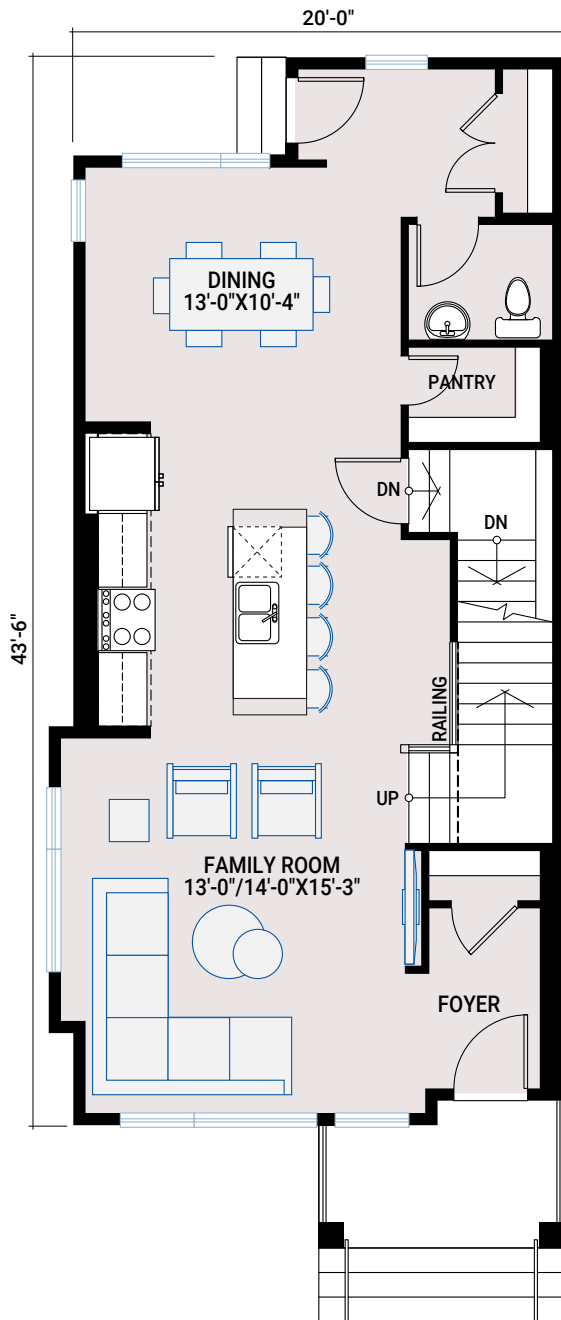
**ALPINE PARK**

1,668 SQ FT | 3 BED | 2.5 BATH

**CARDEL**  
HOMES

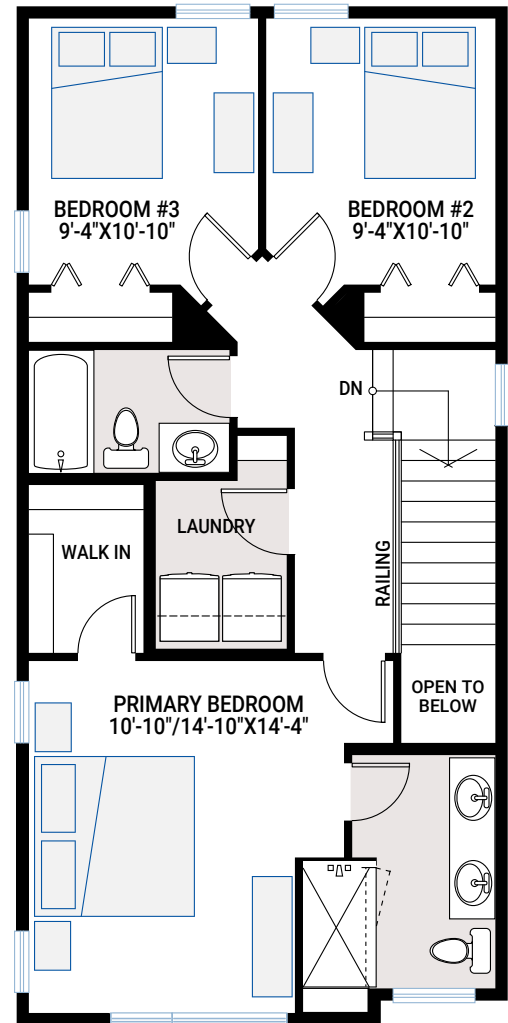
## MAIN FLOOR

843 SQ FT



## UPPER FLOOR

825 SQ FT

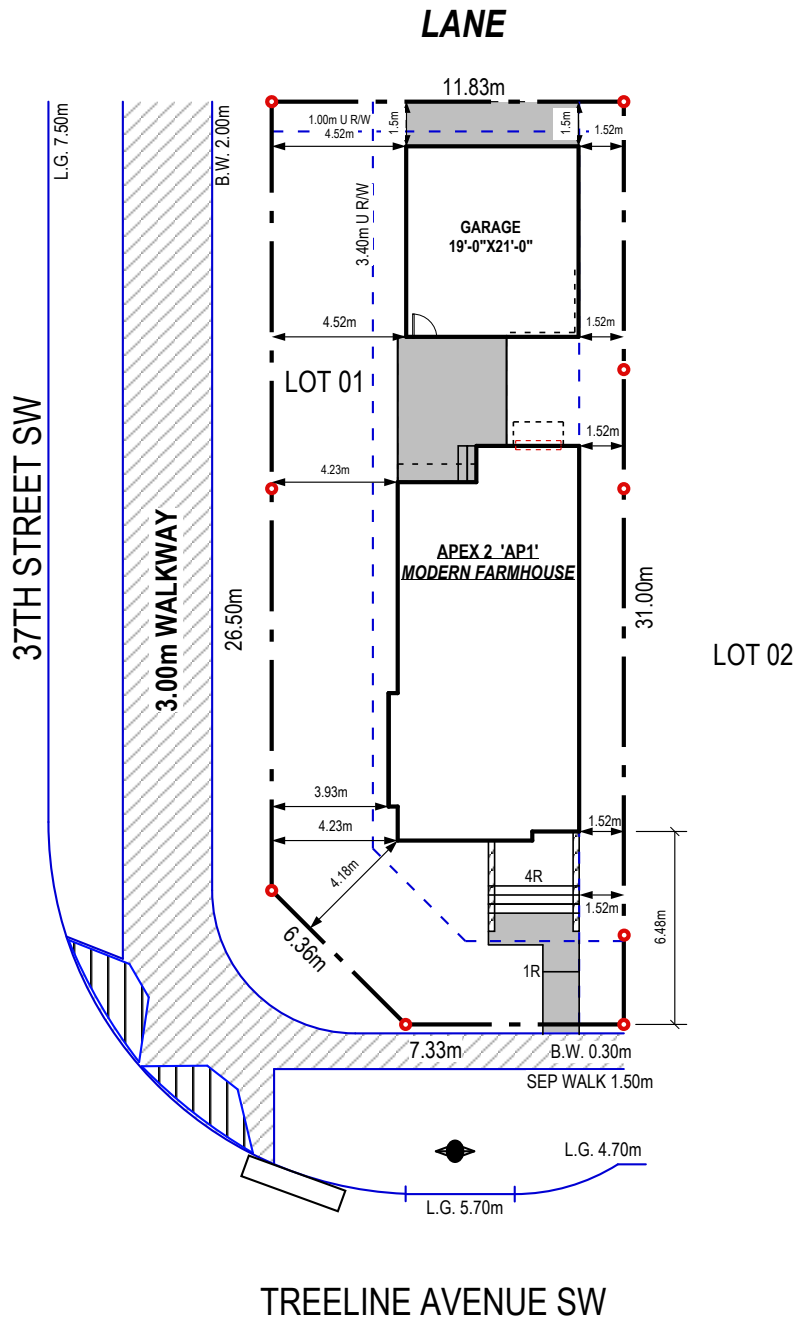


**ALPINE PARK**

1,668 SQ FT | 3 BED | 2.5 BATH

**CARDEL**  
HOMES

PLOT PLAN



## INCLUDED FEATURES

- Corner Lot
- Rear detached garage
- Full Hardie Board exterior
- Modern Farmhouse architecture
- 12' x 12'/16' exposed concrete patio
- Walk-in pantry
- LVP flooring throughout main floor
- Upper floor laundry room
- 9' ceilings throughout entire home (main, upper and basement)
- Custom cabinetry package including:
  - Gentry Cabinetry in colour Daybreak with matte black hardware
  - Soft-close hardware
  - Dovetail drawer construction
- Stainless steel appliances:
  - Upgraded Aura 30" 600 CFM wall-mount chimney hood fan
  - Samsung French door counter-depth refrigerator
  - Samsung electric range
  - Samsung smart dishwasher
  - Whirlpool built-in microwave
- Quartz countertops throughout
- Upgraded railing
- Upgraded Delta kitchen faucet in matte black
- Upgraded kitchen sink to a Blanco double-bowl granite sink in soft white
- Premium-level kitchen backsplash
- Upgraded carpet throughout
- Upgraded lighting package throughout
- Premium floor tile package throughout
- Primary ensuite with:
  - Two separate ensuite sinks
  - Large tiled shower
- Upgraded Delta matte black plumbing faucets and fixtures
- Samsung front-load washer and dryer
- Upgraded matte black hardware throughout
- Premium lighting package and pot lights
- Gas line rough-in to kitchen and rear concrete pad
- 30-year shingles

## INTERIOR COLOUR PALETTE

