
🕒 QUICK POSSESSION



FARMHOUSE - RV3

Artistic representation only. Actual colours and finishes may vary.

EVO 1
(FRONT GARAGE)

RANGEVIEW SPRINGS
94 RAVEN POINT

**UPPER FLOOR
BONUS ROOM**

SPICE KITCHEN

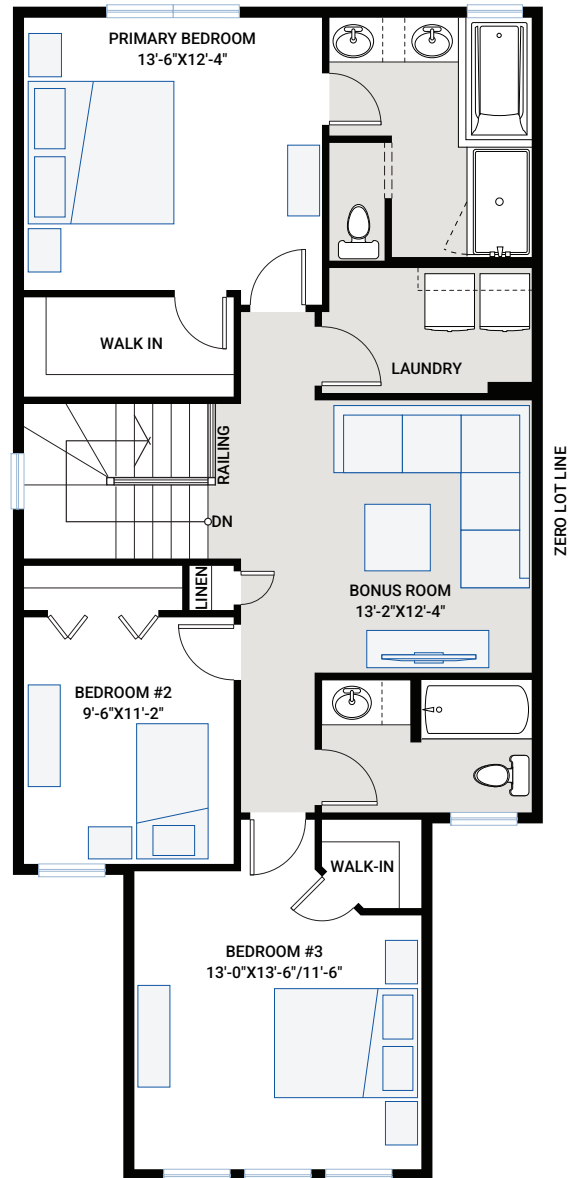
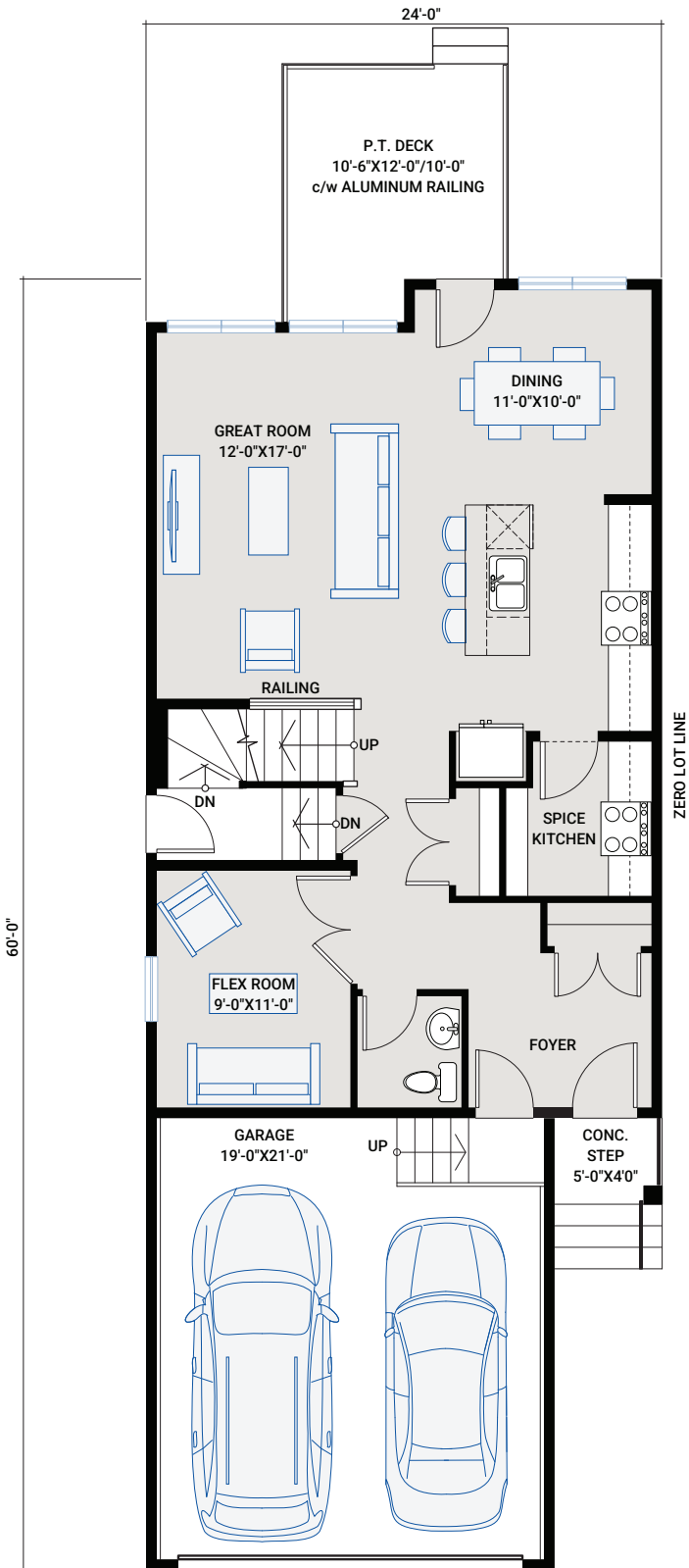
**EXTERIOR
SIDE ENTRY TO
BASEMENT**

MAIN FLOOR

912 SQ FT

UPPER FLOOR

1126 SQ FT



OUTSTANDING FEATURES

- 10'6" x 12'-0"/10'-0" Rear deck
- Main floor flex room
- 9' main floor ceiling
- 9' basement foundation walls
- Separate side entrance to basement
- Upgraded LVP flooring throughout main floor
- Upgraded LVP in upper floor bonus room and hallway
- Upgraded tile flooring in bathrooms and laundry room
- Upgraded wall tile package throughout
- Upgraded quartz countertops throughout
- Custom cabinetry package including:
 - Soft close hardware
 - Dovetail drawer construction
 - Matte black hardware
- Blanco granite double bowl kitchen sink in Coal Black
- Upgraded railing
- Upgraded Delta Trinsic kitchen faucet in matte black
- Moen plumbing faucets and fixtures in matte black
- Stainless steel appliances:
 - Samsung French door counter-depth refrigerator with external water and ice dispenser
 - Samsung electric range
 - Samsung smart dishwasher
 - Built-in Whirlpool microwave
 - Riva Lusia 30" wall-mount chimney hood fan
- Spice kitchen and pantry with:
 - Samsung electric range
 - Broan Glacier 30" under-cabinet hood fan
- Upper floor bonus room
- Upper floor laundry room
 - Samsung front load washer and dryer
- Heat recovery ventilation system
- Cardel's premium spray foam attic insulation assembly
- Rough-in gas line to kitchen, spice kitchen and rear deck
- Fusion Series, black vinyl exterior, maintenance-free, high-performance, triple-glazed windows

INTERIOR COLOUR PALETTE

