
🕒 QUICK POSSESSION



FARMHOUSE RV3

Artistic representation only. Actual colours and finishes may vary.

HAVEN 2
(FRONT GARAGE)

LEWISBURG
92 LEWISBURG CLOSE NW

**MAIN FLOOR
BEDROOM AND FULL
BATHROOM**

SPICE KITCHEN

**EXTERIOR
SIDE ENTRY TO
BASEMENT**

Lewisburg

2,275 SQ FT | 5 BED | 4 BATH

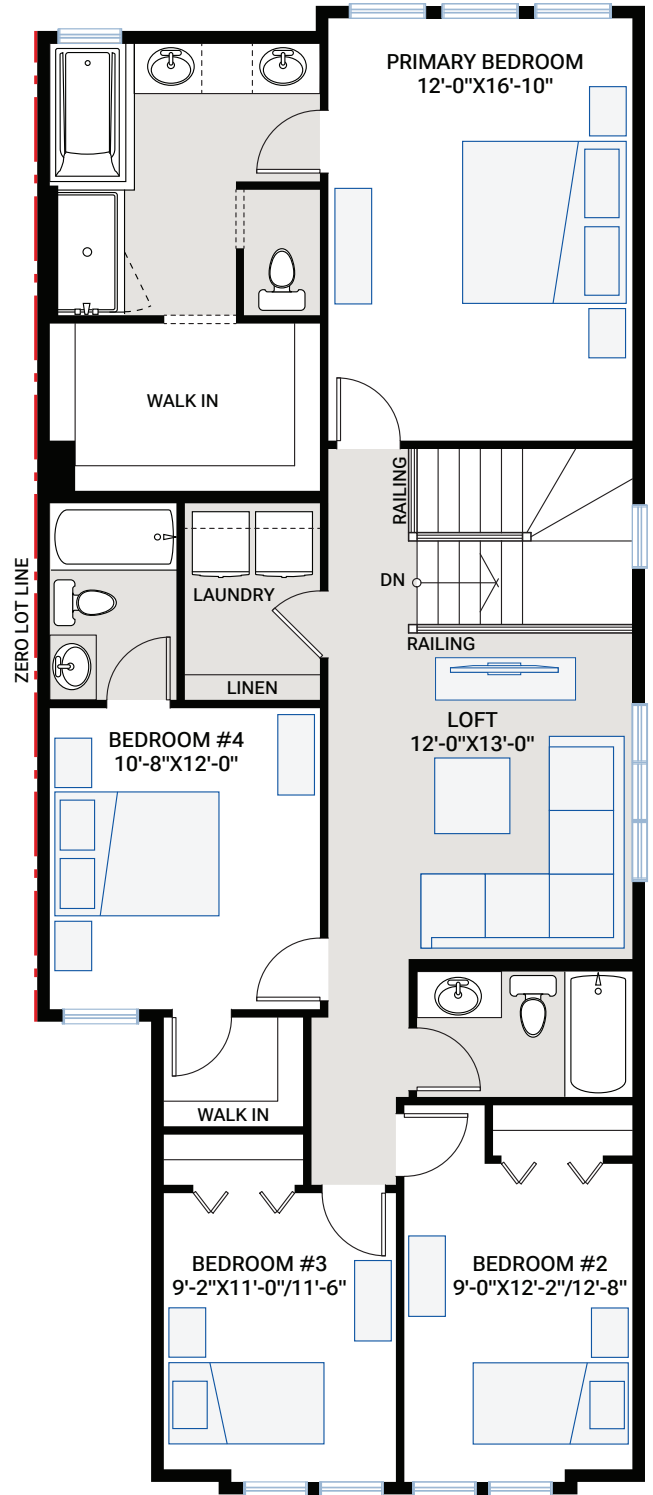
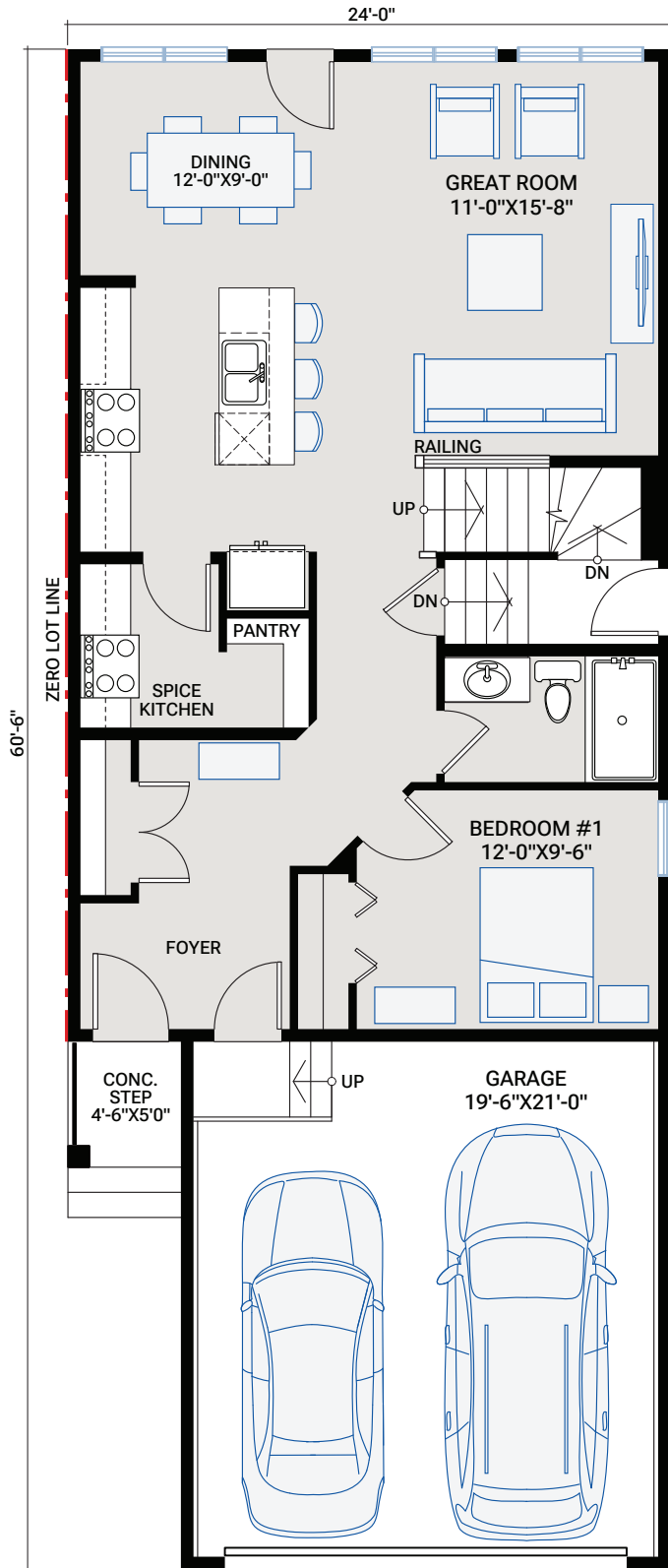
**CARDEL
HOMES**

MAIN FLOOR

948 SQ FT

UPPER FLOOR

1,327 SQ FT



OUTSTANDING FEATURES

- Main floor bedroom and full bathroom
- Upper floor loft
- Upper floor laundry room
- 9' main and upper floor ceiling
- 9' basement foundation walls
- Separate side entrance to basement
- LVP flooring throughout main floor
- LVP in upper floor bonus room and hallway
- Upgraded tile flooring in bathrooms and laundry room
- Upgraded wall tile package throughout
- Upgraded Quartz countertops throughout
- Custom cabinetry package including:
 - Soft close hardware
 - Dovetail drawer construction
 - Matte black hardware
- Stainless steel appliances:
 - Samsung French door counter-depth refrigerator with external ice and water dispenser
 - Samsung electric range
 - Samsung smart dishwasher
 - Built-in Whirlpool microwave
 - Riva Lusia 30" wall-mount chimney hood fan
- Spice kitchen and pantry with:
 - Samsung electric range
 - Broan Glacier 30" under-cabinet hood fan
- Blanco granite double-bowl kitchen sink in Truffle
- Upgraded railing
- Upgraded Delta Trinsic kitchen faucet in matte black
- Moen plumbing faucets and fixtures in matte black
- Samsung front load washer and dryer
- Heat recovery ventilation system
- Cardel's premium spray foam attic insulation assembly
- Rough-in gas line to kitchen stove, spice kitchen and rear deck area
- Fusion Series, black vinyl exterior, maintenance-free, high-performance, triple-glazed windows

