

---

# 🕒 QUICK POSSESSION

---



URBAN MOUNTAIN - AP3

*Artistic representation only. Actual colours and finishes may vary.*

**THE ROBSON**

**ALPINE PARK**  
57 BLUEROCK HILL SW

**REAR DETACHED  
GARAGE**

**PREMIUM  
INTERIOR FINISHES**

**SIDE ENTRANCE  
TO BASEMENT**

**ALPINE PARK**

1,618 SQ FT | 3 BED | 2.5 BATH

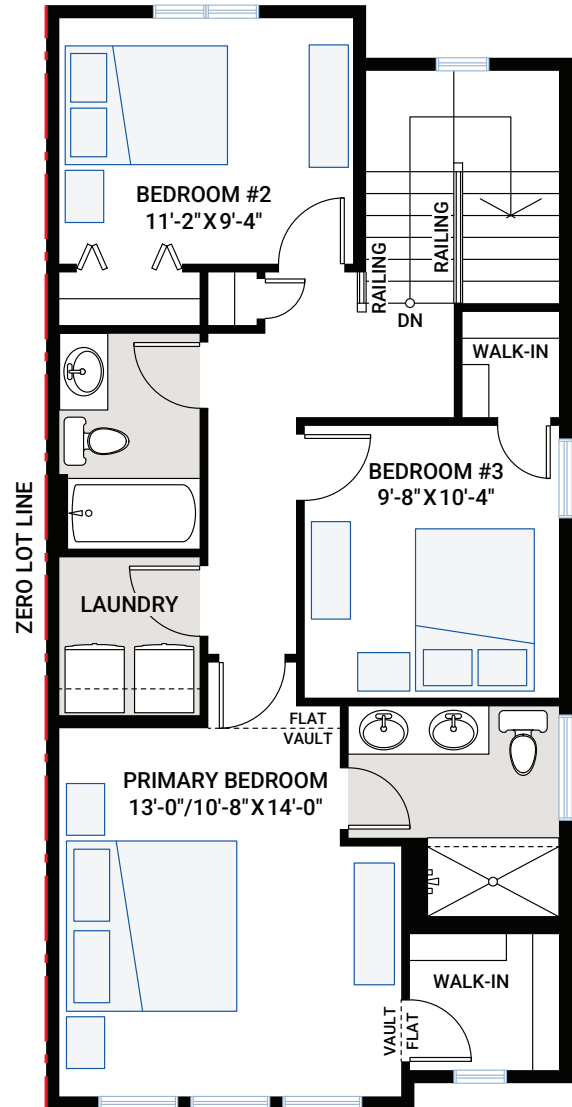
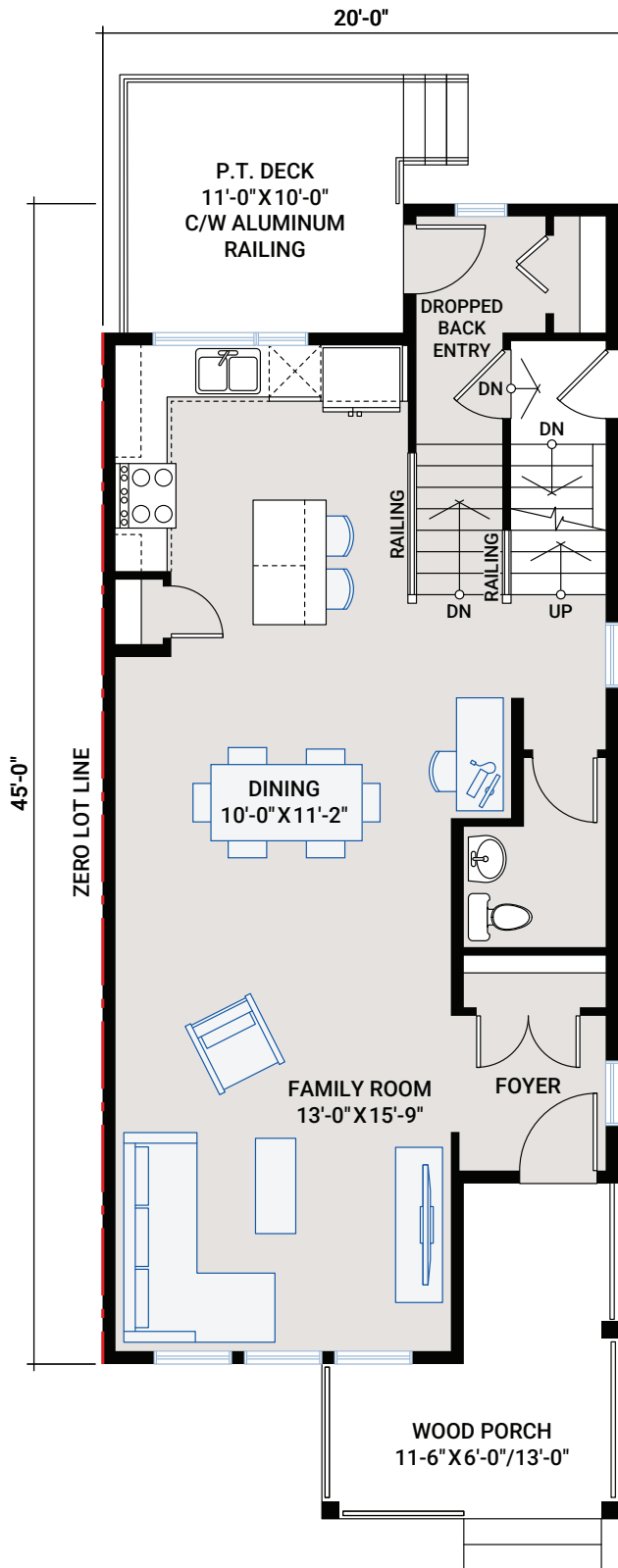
**CARDEL**  
HOMES

# MAIN FLOOR

800 SQ FT

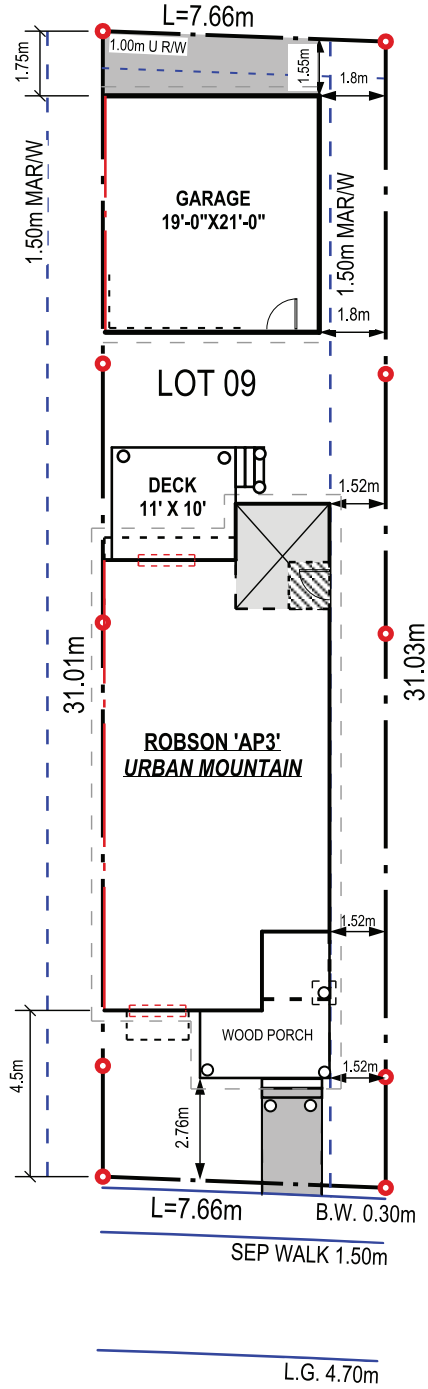
# UPPER FLOOR

818 SQ FT



# PLOT PLAN

## LANE



BLUEROCK HILL SW

## OUTSTANDING FEATURES

- Open-concept main floor
- Exterior side entrance to basement
- Hardie board siding
- Front porch
- Rear detached double garage
- 11' x 10' rear deck
- Upper floor laundry room
- Rear staircase
- Custom cabinetry package including:
  - Matte black hardware
  - Soft-close hardware
  - Dovetail drawer construction
- Stainless steel appliances:
  - Lusia 30" wall-mount chimney hood fan
  - Samsung French door counter-depth refrigerator
  - Samsung gas range
  - Samsung smart dishwasher
  - Whirlpool built-in microwave
- Quartz countertops throughout
- Upgraded railing
- Upgraded Delta kitchen faucet in matte black
- Upgraded Blanco double-bowl granite sink in soft white
- Premium-level kitchen backsplash
- Upgraded LVP throughout main floor
- Upgraded carpet throughout
- Premium lighting package
- Premium floor tile package throughout
- Vaulted ceiling in the primary bedroom
- Primary ensuite with:
  - Two separate ensuite sinks
  - Large tiled shower
- Samsung front-load washer and dryer
- Upgraded matte black hardware throughout
- Gas line rough-in to kitchen and rear concrete pad
- 30-year shingles

### INTERIOR COLOUR PALETTE

