
🕒 QUICK POSSESSION



FARMHOUSE RV2

Artistic representation only. Actual colours and finishes may vary.

ALLURE
(FRONT GARAGE)

LEWISBURG
516 LEWISBURG PLACE NW

**OPEN TO BELOW
GREAT ROOM**

**EXTERIOR SIDE
ENTRY TO BASEMENT**

**BACKING ONTO
GREENSPACE**

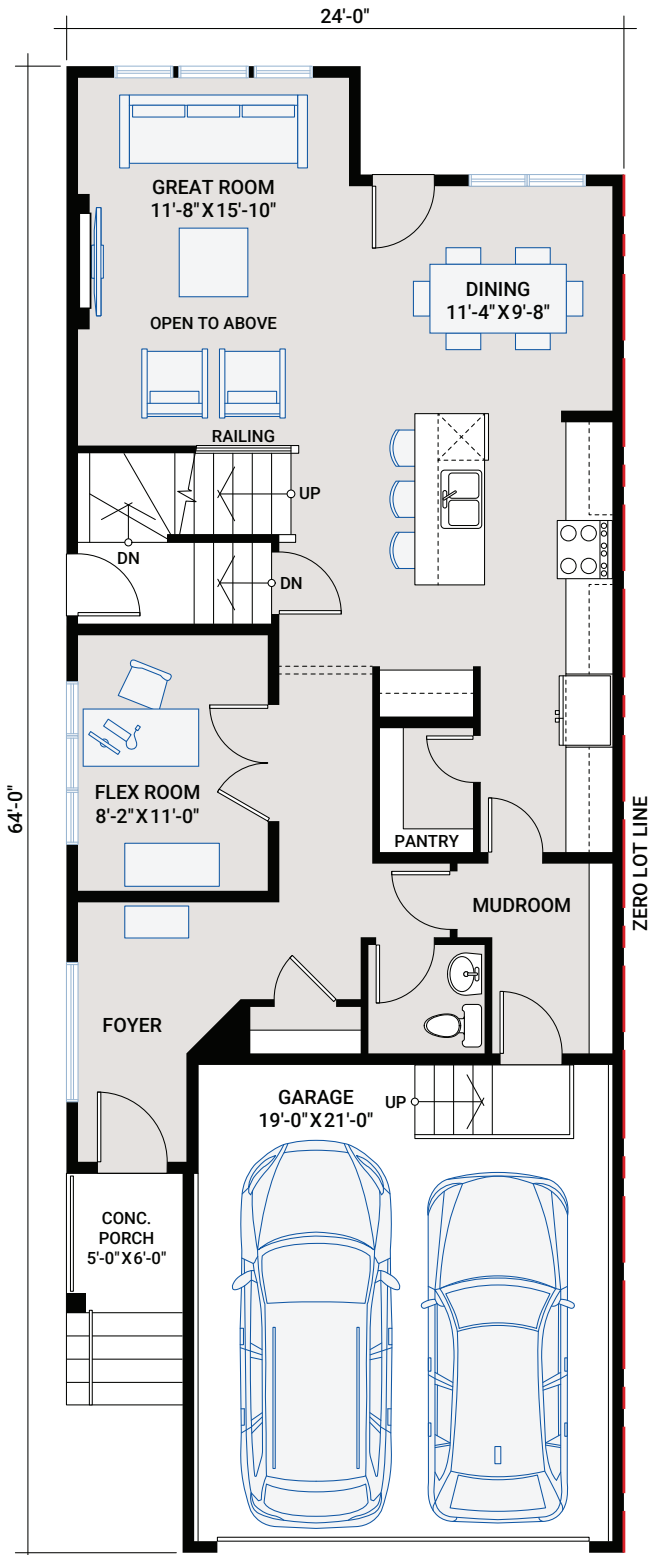
Lewisburg

2,114 SQ FT | 3 BED | 2.5 BATH

**CARDEL
HOMES**

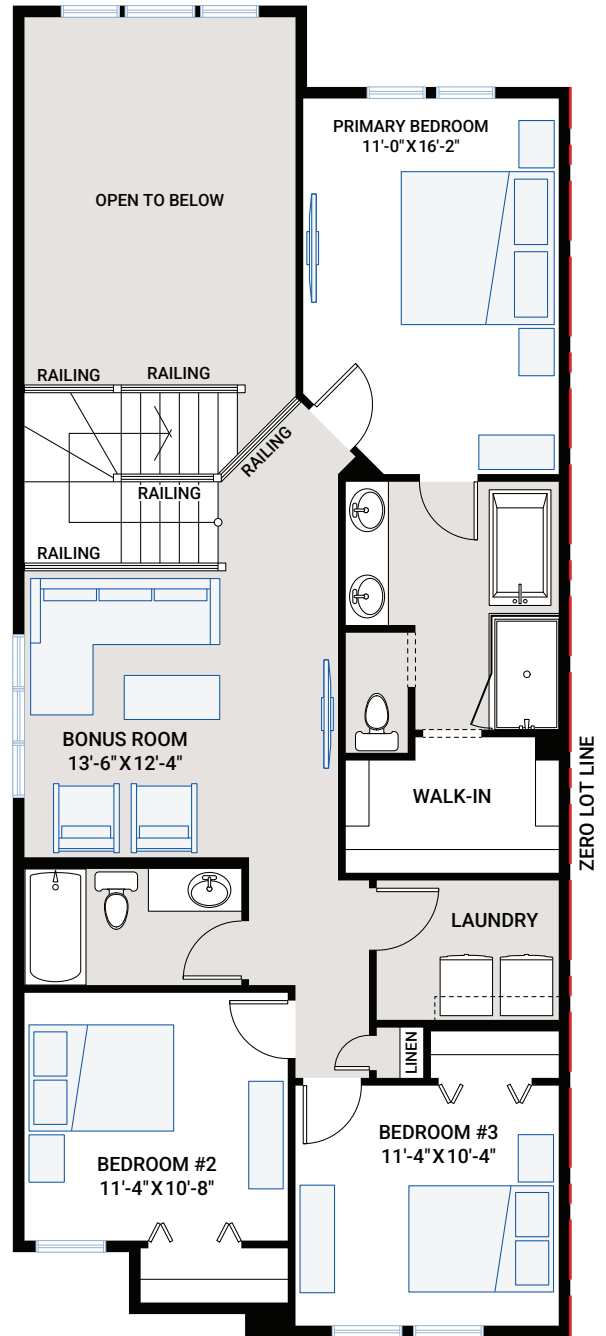
MAIN FLOOR

1,006 SQ FT



UPPER FLOOR

1,108 SQ FT



OUTSTANDING FEATURES

- Open to below great room with 2-storey windows
- Main floor flex room with double doors
- Upper floor bonus room
- Upper floor laundry room
- 9' main floor ceiling
- 9' basement foundation walls
- Separate side entrance to basement
- LVP flooring throughout main floor
- LVP in upper floor bonus room and hallway
- Upgraded tile flooring in bathrooms, laundry room and mudroom
- Upgraded wall tile package throughout
- Upgraded quartz countertops throughout
- Custom cabinetry package including:
 - Soft close hardware
 - Dovetail drawer construction
 - Matte black hardware
- Stainless steel appliances:
 - Samsung French door counter-depth refrigerator with external ice and water dispenser
 - Samsung electric range
 - Samsung smart dishwasher
 - Built-in Whirlpool microwave
 - Riva Lusia 30" wall-mount chimney hood fan
- Blanco granite double-bowl kitchen sink in Coal Black
- Upgraded railing
- Upgraded Delta Trinsic kitchen faucet in matte black
- Moen plumbing faucets and fixtures in matte black
- Samsung front-load washer and dryer
- Heat recovery ventilation system
- Cardel's premium spray foam attic insulation assembly
- Rough-in gas line to kitchen stove and rear deck area
- Fusion Series, black vinyl exterior, maintenance-free, high-performance, triple-glazed windows

INTERIOR COLOUR PALETTE

