

---

🕒 **QUICK POSSESSION**

---



URBAN MOUNTAIN SL3

**MIDTOWN 1**  
(PREMIUM PAIRED HOME)

**SILVERTON** (LOT 36)  
45 SILVERTON GLEN WAY SW

**1,452** <sup>SQ</sup>  
<sup>FT</sup>

**SIDE ENTRY  
TO BASEMENT**

**9X11 REAR DECK WITH  
ALUMINUM RAILING**

**REAR DETACHED  
GARAGE**

**SILVERTON**

1,452 SQ FT | 3 BED | 2.5 BATH

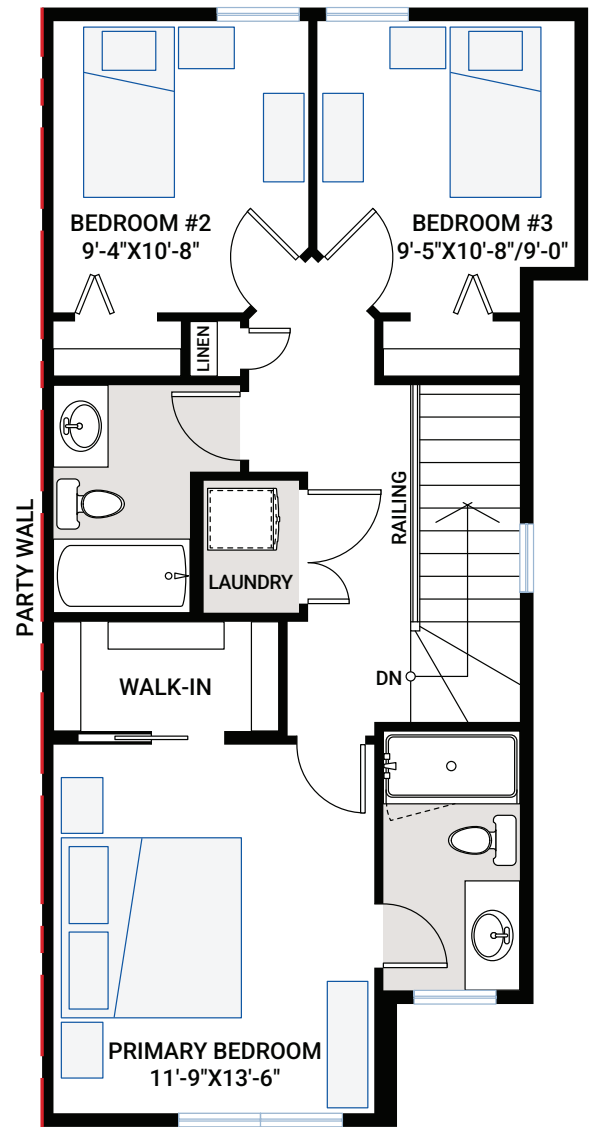
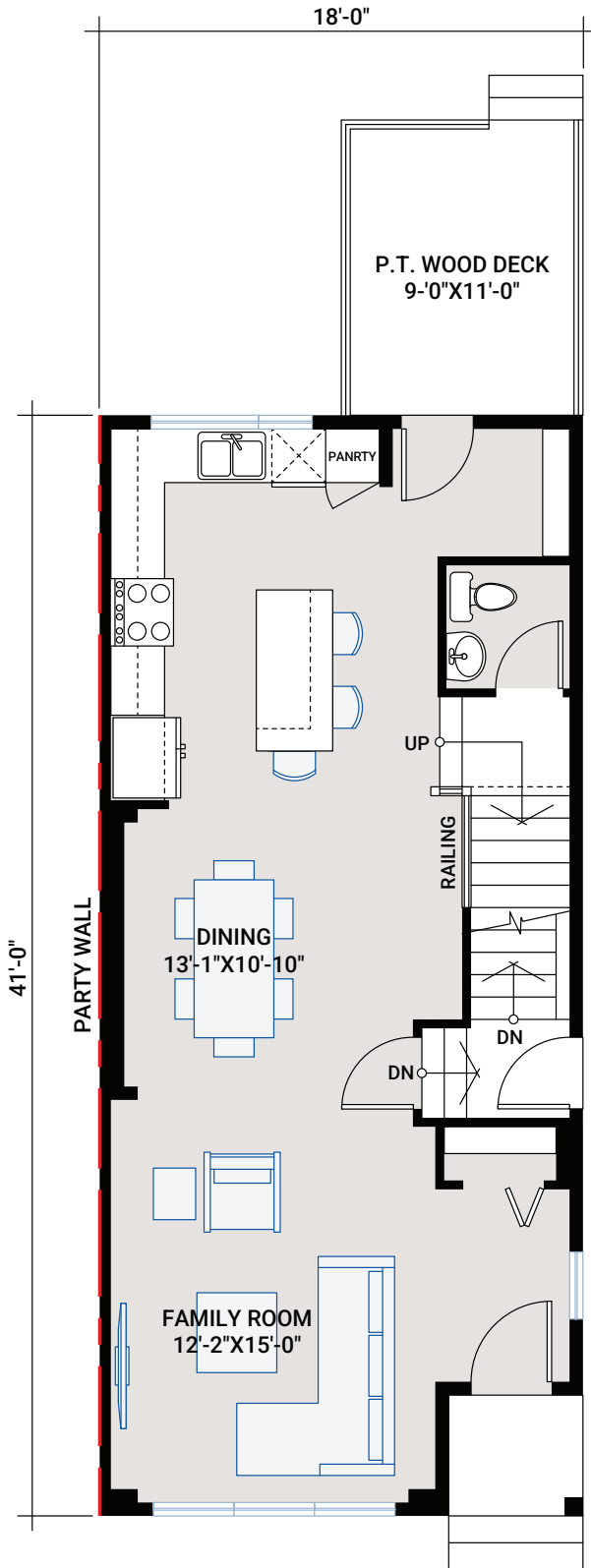
**CARDEL  
HOMES**

MAIN FLOOR

716 SQ FT

UPPER FLOOR

736 SQ FT





## OUTSTANDING FEATURES

- 9' main floor ceiling
- 9' basement foundation walls
- Urban Mountain architecture
- Full yard landscaping
- 9' x 11' rear deck with aluminum railing
- Separate side entrance to basement
- LVP flooring throughout main floor
- Tile flooring in bathrooms
- Custom cabinetry package including:
  - Soft-close hardware
  - Dovetail drawer construction
  - Matte black hardware
- Samsung stainless steel appliances
- Broan chimney hood fan
- Quartz countertops throughout
- Upgraded Delta Trinsic kitchen faucet in matte black
- Blanco Horizon granite kitchen sink
- Upgraded kitchen backsplash
- Upgraded railing
- Upgraded wall tile package
- Moen plumbing faucets and fixtures
- Samsung front load washer and dryer
- Heat recovery ventilation system
- Cardel's premium spray foam attic insulation assembly
- Rough-in gas line to kitchen stove and deck
- 30-year shingles

### INTERIOR COLOUR PALETTE

#### SCHEME #1 SATIN WHITE CABINETS

