
🕒 QUICK POSSESSION



FSCL-2

LUCCA (PAIRED HOME)

FIRESIDE
400 FIRESIDE DRIVE

1,814 ^{SQ}_{FT}

9' MAIN FLOOR
CEILING

QUARTZ
COUNTERTOPS

LVP FLOORING
ON MAIN FLOOR



1,814 SQ FT | 3 BED | 2.5 BATH

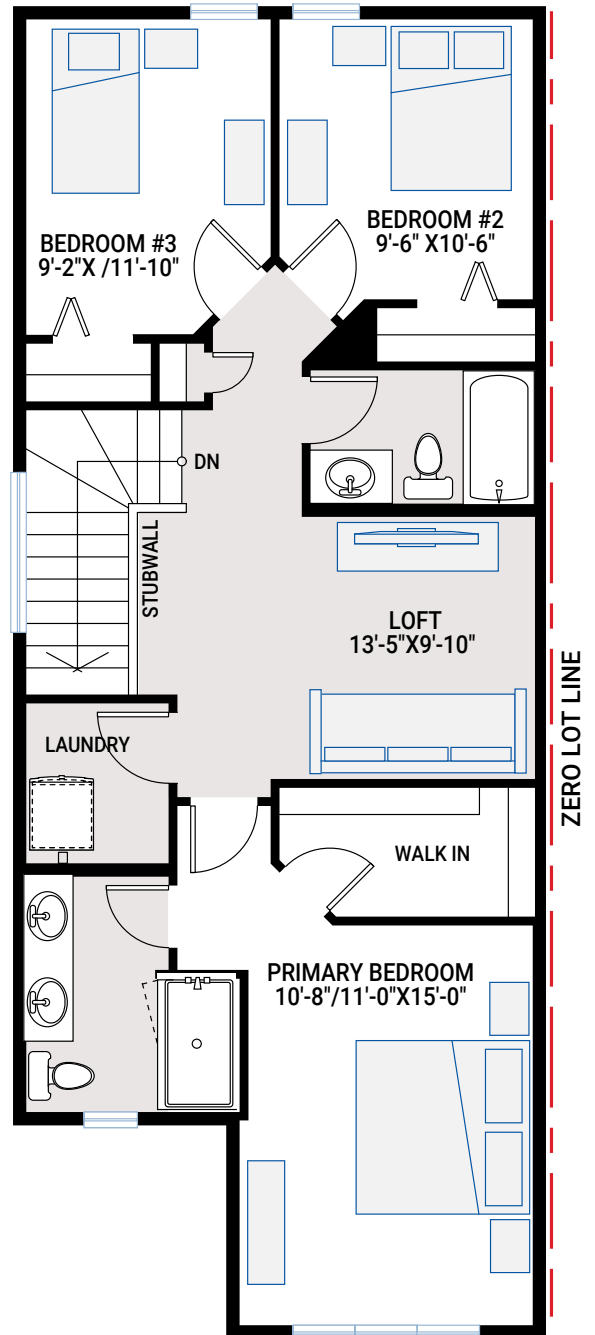
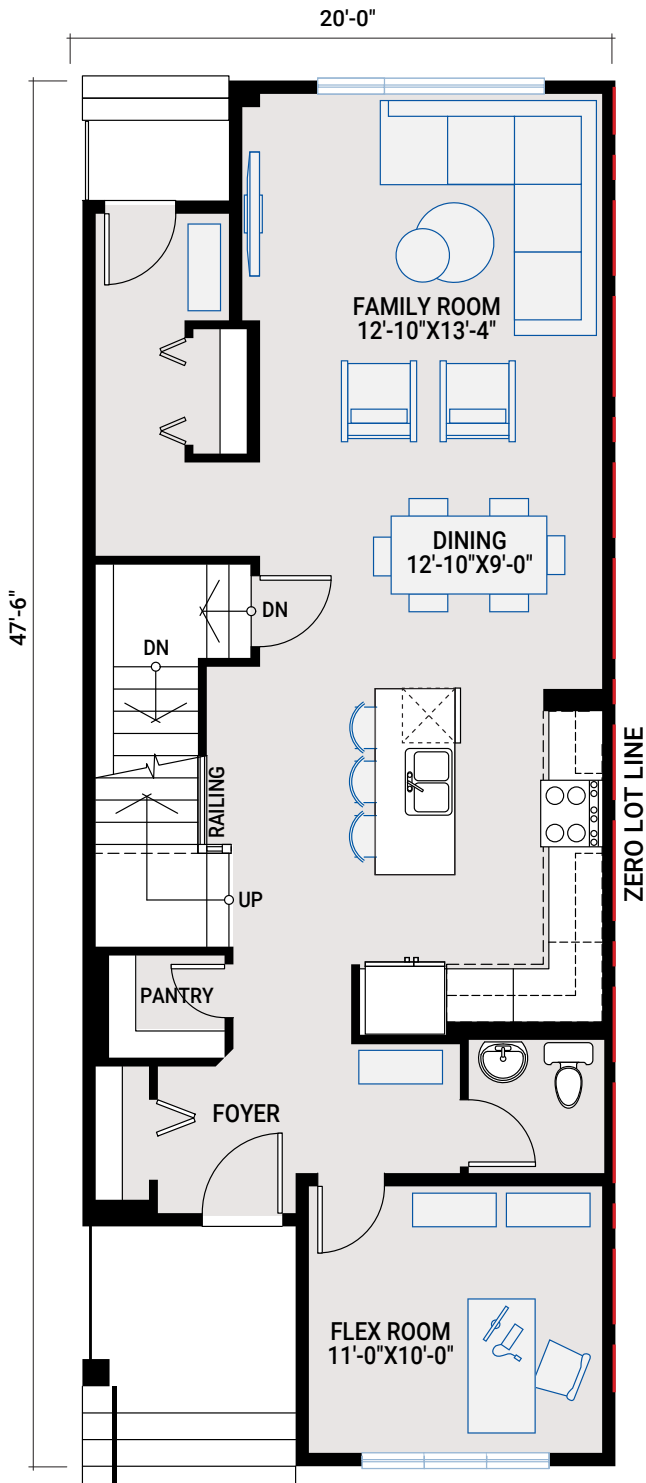
CARDEL
HOMES

MAIN FLOOR

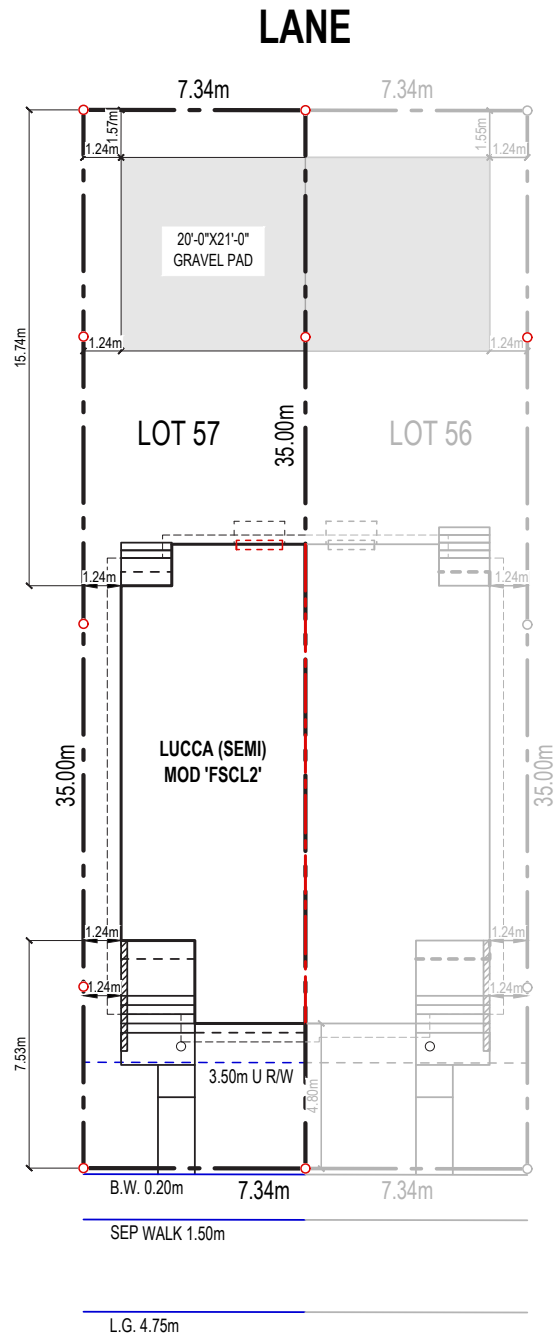
878 SQ FT

UPPER FLOOR

936 SQ FT



PLOT PLAN



FIRESIDE DRIVE

INCLUDED FEATURES

- 9' main floor ceiling
- Walk-in pantry
- Main floor flex room
- Upper floor loft
- LVP flooring throughout main floor and upper floor hallway and loft
- Tile flooring in bathrooms
- Custom cabinetry package including:
 - Soft close hardware
 - Dovetail drawers
 - Matte black hardware
- Stainless steel appliances:
 - Samsung French door counter-depth refrigerator
 - Samsung electric range
 - Samsung smart dishwasher
 - Whirlpool microwave
 - Aura Lucca 30" wall-mount chimney hood
- Blanco-granite double bowl kitchen sink in Truffle
- Upgraded railing
- Upgraded wall tile package
- Quartz countertops throughout
- Upgraded Delta Trinsic kitchen faucet in matte black
- Moen plumbing faucets and fixtures in matte black
- Pot lighting
- Samsung front load washer and dryer
- Heat recovery ventilation system
- Cardel's premium spray foam attic insulation assembly
- Gas line rough-in to kitchen stove and rear of house
- 30-year shingles

INTERIOR COLOUR PALETTE



DECEMBER 2025 | LUCCA (PAIRED) | Actual plan may vary from brochure. Square footage is calculated using local Home Builder Association guidelines. Construction square footage is 943 (main); 874 (upper) for 1,817 total. This plan is published by Cardel Homes. Dimensions and square footage shown are approximate and subject to change without notice. All rights reserved, including the rights of reproduction in whole or part without permission of Publisher E.&O.E. Note: Elevation details are community-specific and are artistic representation only. Please ask your sales representative for further information.