
🕒 QUICK POSSESSION



URBAN MOUNTAIN SL3

Artistic representation only. Actual colours and finishes may vary.

THE MIDTOWN 2
PAIRED HOME

LEWISBURG
35 LEWISBURG MANOR NE

**SIDE ENTRY
TO BASEMENT**

**UPPER FLOOR
LOFT**

**QUARTZ
COUNTERTOPS
THROUGHOUT**

Lewisburg

1,634 SQ FT | 3 BED | 2.5 BATH

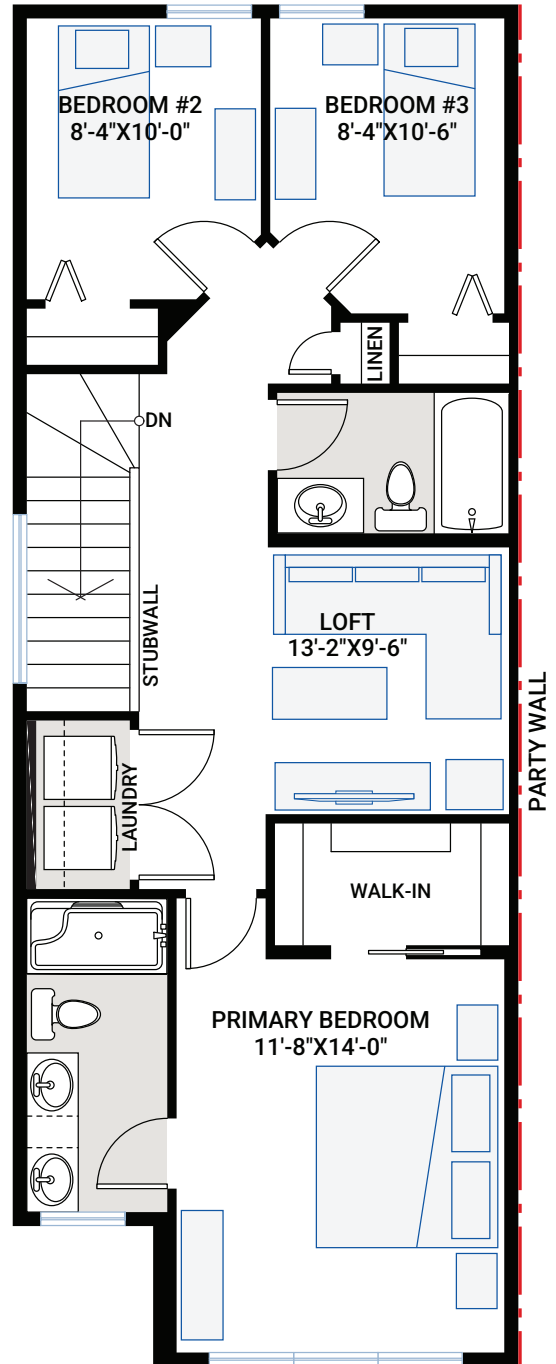
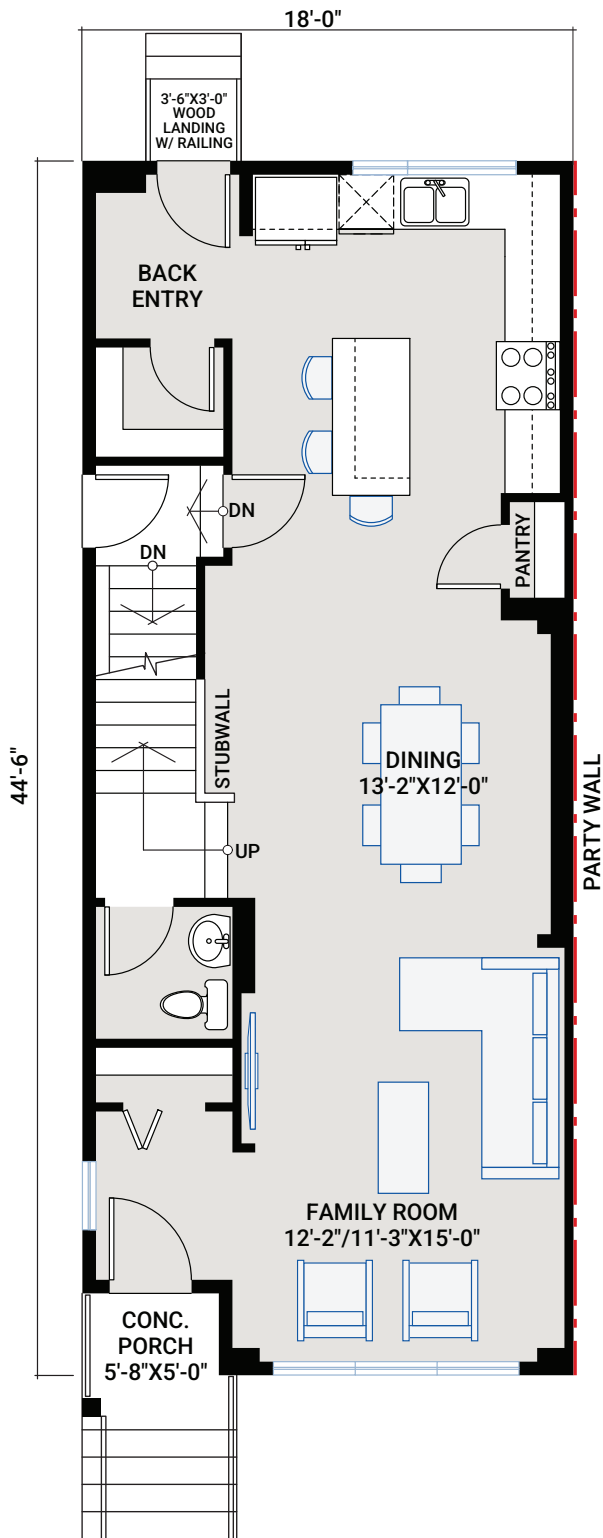
**CARDEL
HOMES**

MAIN FLOOR

786 SQ FT

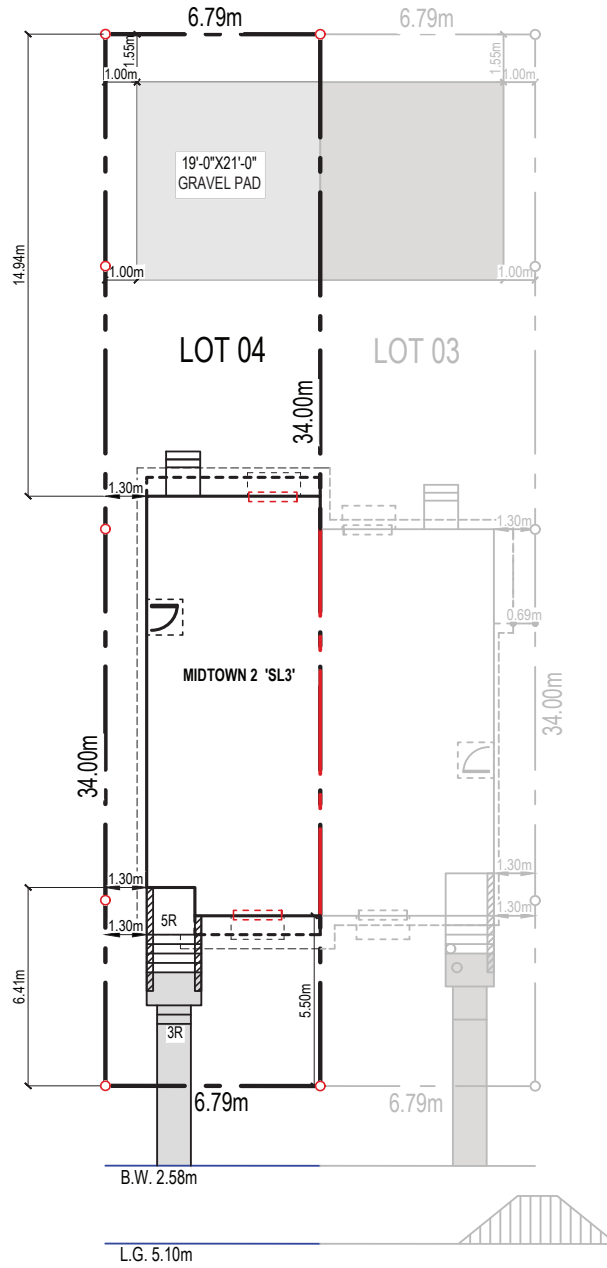
UPPER FLOOR

848 SQ FT



PLOT PLAN

LANE



LEWISBURG MANOR NE

OUTSTANDING FEATURES

- 9' main floor ceiling
- 9' basement foundation walls
- Upper floor loft
- Separate side entrance to basement
- LVP flooring throughout main floor
- Tile flooring in bathrooms
- Custom cabinetry package including:
 - Soft close hardware
 - Dovetail drawer construction
 - Brushed Nickel hardware
- Stainless steel appliances:
 - Samsung French door counter-depth refrigerator with ice maker
 - Samsung slide in electric range
 - Samsung smart dishwasher
 - Samsung over the range microwave
- Brookmoore stainless steel undermount sink
- Upgraded wall tile package
- Quartz countertops throughout
- Moen Chasen kitchen faucet
- Moen plumbing faucets and fixtures in chrome
- Samsung front load washer and dryer
- Double sinks in primary ensuite
- Heat recovery ventilation system
- Cardel's premium spray foam attic insulation assembly
- Rough-in gas line to kitchen stove and deck
- 30-year shingles

INTERIOR COLOUR PALETTE

35 LEWISBURG MANOR SATIN SLEET CABINETS

