
🕒 QUICK POSSESSION



PRAIRIE CL1

Artistic representation only. Actual colours and finishes may vary.

MIDTOWN 2 (PREMIUM PAIRED HOME)

CLEARWATER PARK
330 CLEARVIEW MANOR

1,634 ^{SQ}_{FT}

UPPER FLOOR
LOFT

QUARTZ
COUNTERTOPS
THROUGHOUT

REAR DETACHED
DOUBLE GARAGE



1,634 SQ FT | 3 BED | 2.5 BATH

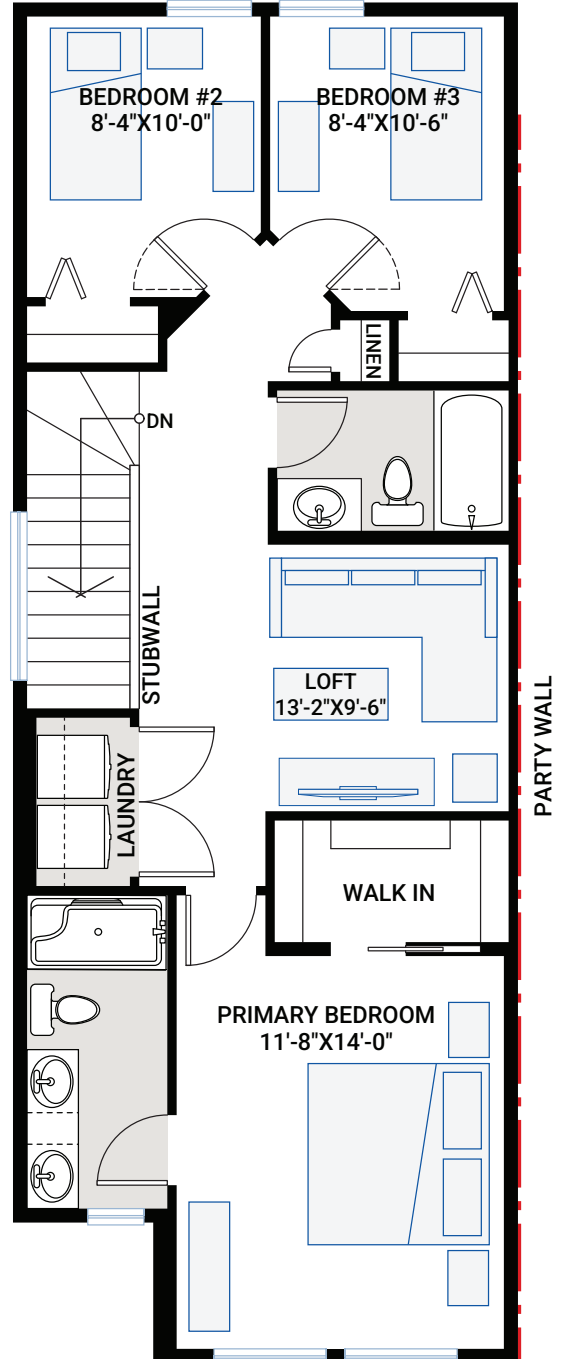
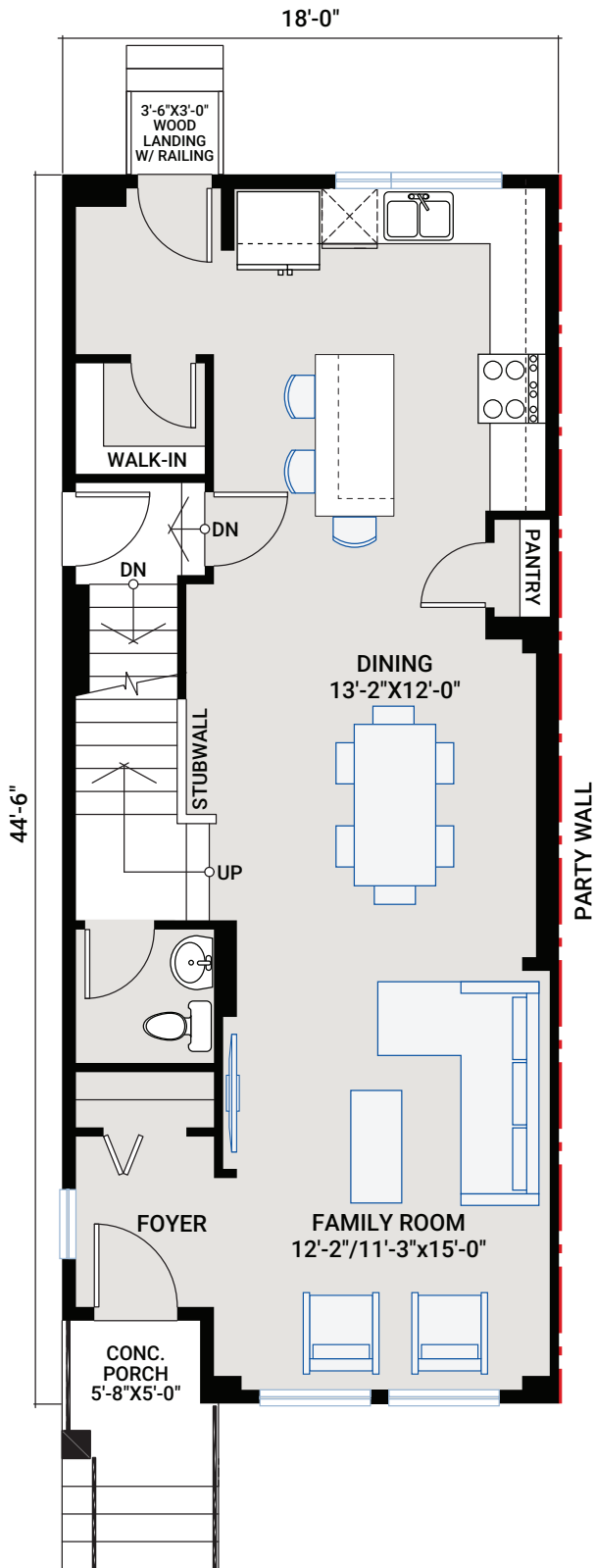
CARDEL
HOMES

MAIN FLOOR

786 SQ FT

UPPER FLOOR

848 SQ FT



OUTSTANDING FEATURES

- 9' main floor ceiling
- 9' basement foundation walls
- Upper floor loft
- Separate side entrance to basement
- LVP flooring throughout main floor
- Tile flooring in bathrooms
- Custom cabinetry package including:
 - Soft close hardware
 - Dovetail drawer construction
 - Brushed Nickel hardware
- Stainless steel appliances:
 - Samsung French door counter-depth refrigerator with ice maker
 - Samsung slide in electric range
 - Samsung smart dishwasher
 - Samsung over the range microwave
- Brookmoore stainless steel undermount sink
- Upgraded wall tile package
- Quartz countertops throughout
- Moen Chasen kitchen faucet
- Moen plumbing faucets and fixtures in chrome
- Samsung front load washer and dryer
- Double sinks in primary ensuite
- Heat recovery ventilation system
- Cardel's premium spray foam attic insulation assembly
- Rough-in gas line to kitchen stove and future deck location
- Front yard landscaping
- Fusion Series, black vinyl exterior, maintenance-free, high-performance, triple-glazed windows
- 30-year shingles

INTERIOR COLOUR PALETTE

