

---

# 🕒 QUICK POSSESSION

---



URBAN MOUNTAIN SL3

*Artistic representation only. Actual colours and finishes may vary.*

**THE MIDTOWN 1**  
PAIRED HOME

**LEWISBURG**  
31 LEWISBURG MANOR NW

**SIDE ENTRY  
TO BASEMENT**

**9' MAIN FLOOR  
CEILING**

**QUARTZ  
COUNTERTOPS  
THROUGHOUT**

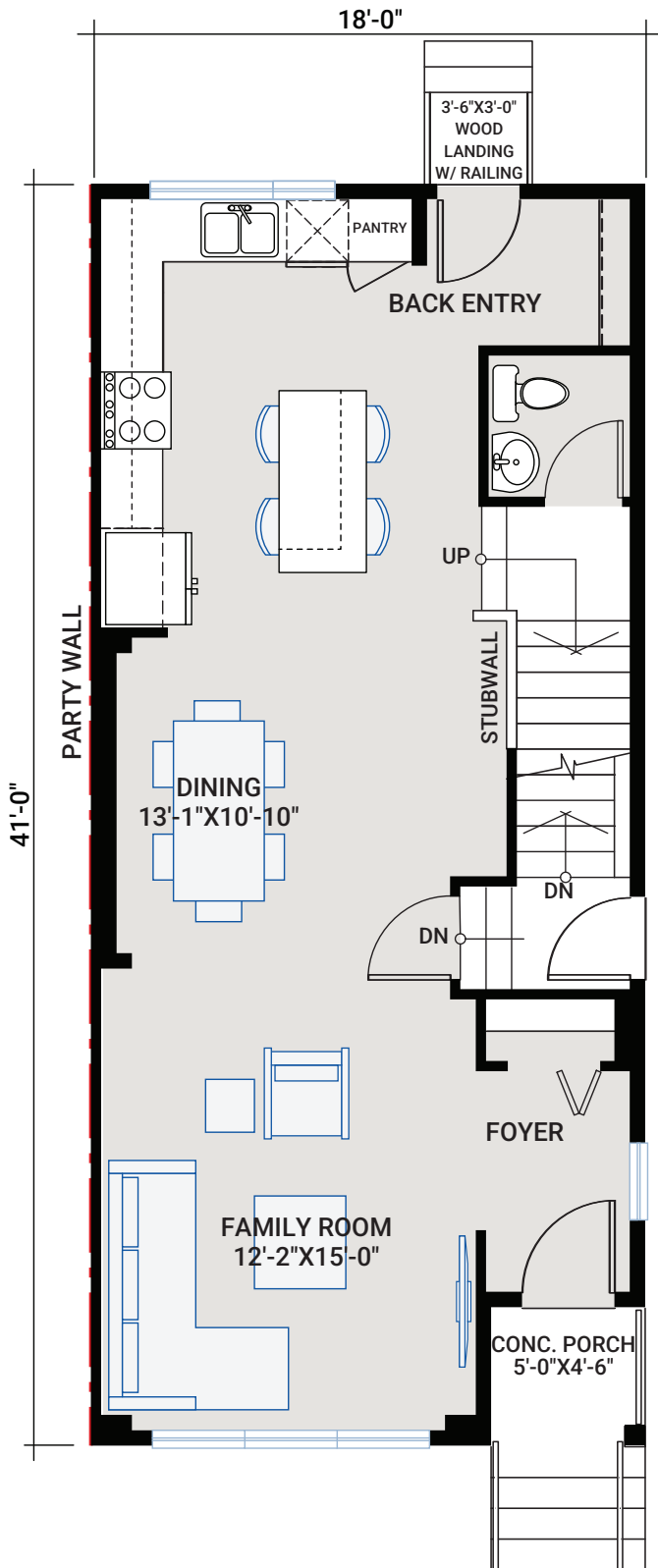
**Lewisburg**

1,452 SQ FT | 3 BED | 2.5 BATH

**CARDEL  
HOMES**

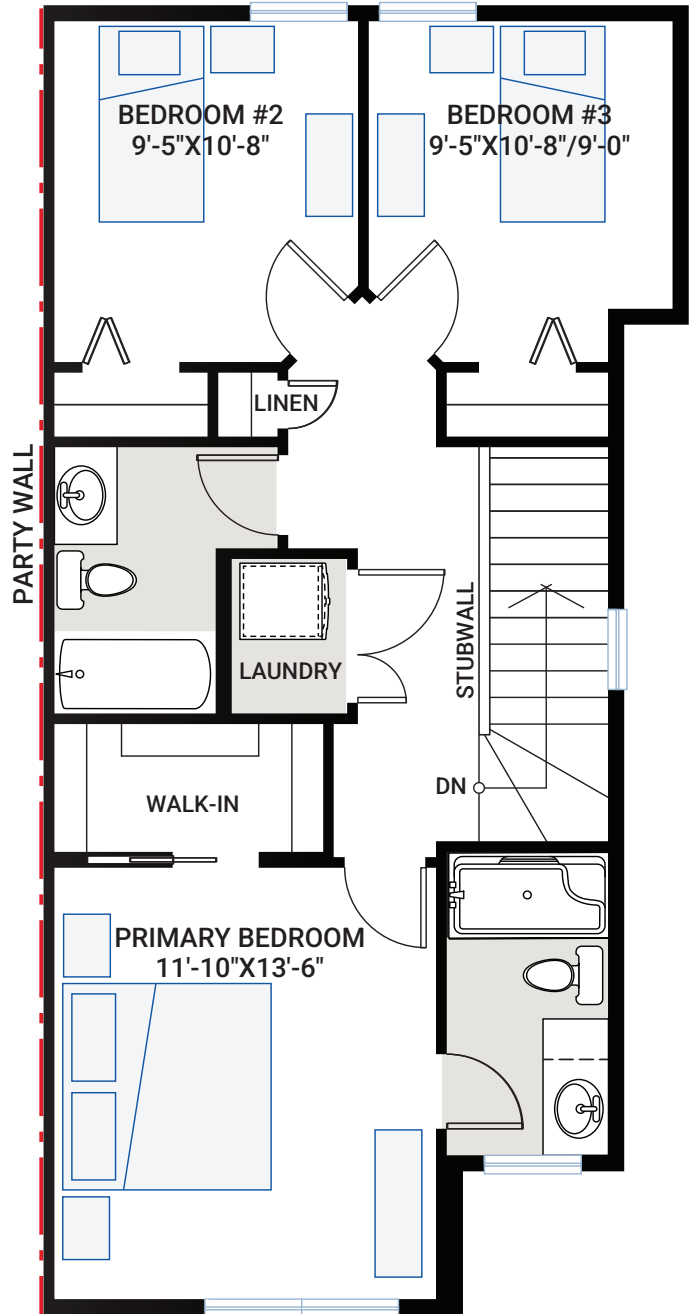
# MAIN FLOOR

716 SQ FT



# UPPER FLOOR

736 SQ FT





## OUTSTANDING FEATURES

- 9' main floor ceiling
- 9' basement foundation walls
- Separate side entrance to basement
- LVP flooring throughout main floor
- Tile flooring in bathrooms
- Custom cabinetry package including:
  - Soft close hardware
  - Dovetail drawer construction
  - Brushed Nickel hardware
- Stainless steel appliances:
  - Samsung French door counter-depth refrigerator with ice maker
  - Samsung slide in electric range
  - Samsung smart dishwasher
  - Samsung over the range microwave
- Brookmoore stainless steel undermount kitchen sink
- Moen Chasen kitchen faucet
- Upgraded wall tile package
- Quartz countertops throughout
- Moen plumbing faucets and fixtures
- Samsung front load washer and dryer
- Heat recovery ventilation system
- Cardel's premium spray foam attic insulation assembly
- Rough-in gas line to kitchen stove and deck
- 30-year shingles

### INTERIOR COLOUR PALETTE

#### 31 LEWISBURG MANOR SATIN WHITE CABINETS

