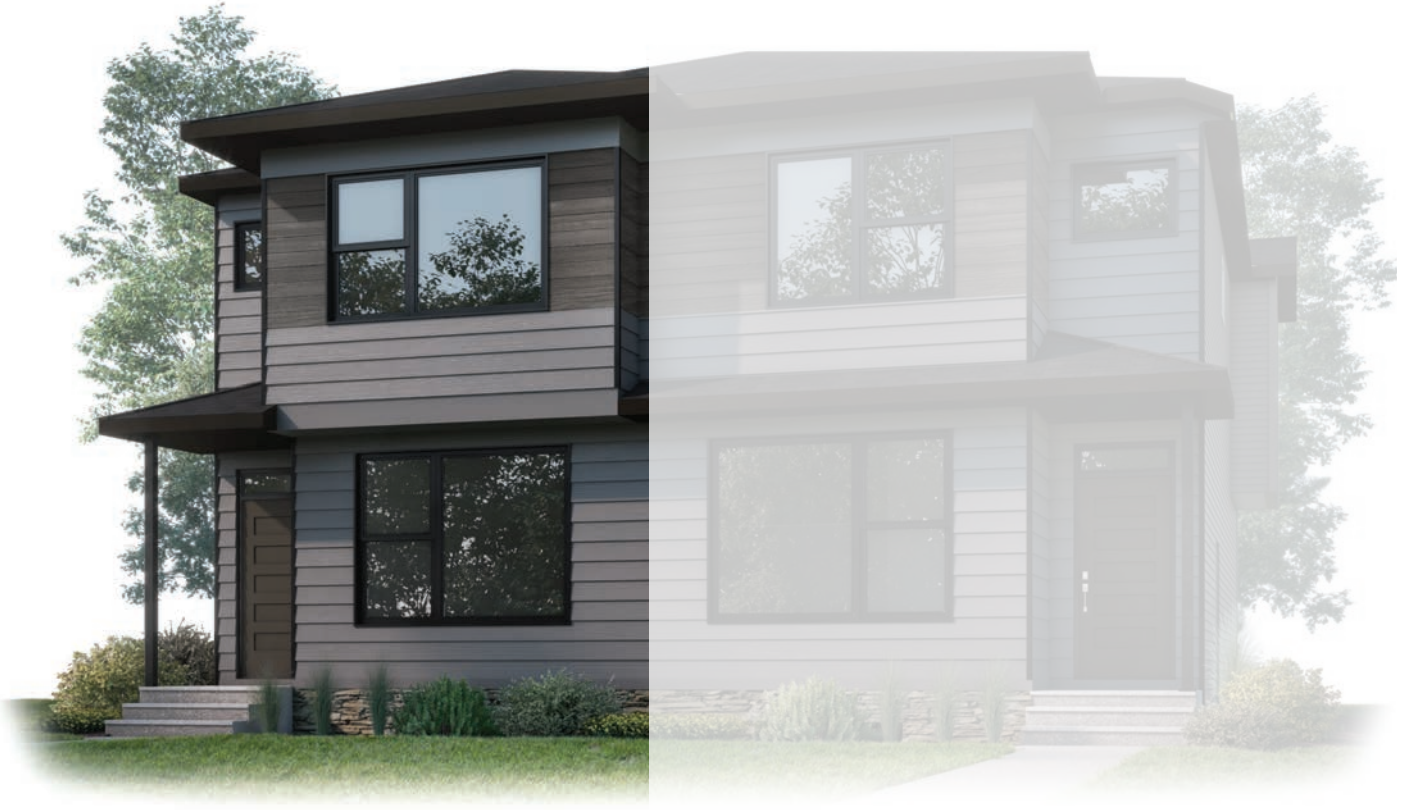


---

 **QUICK POSSESSION**

---



MODERN PRAIRIE SL4

**MIDTOWN 2**  
(PREMIUM PAIRED HOME)

**SILVERTON** (LOT 32)  
295 SILVERTON GLEN ROAD SW

---

**1,634** <sup>SQ</sup><sub>FT</sub>

**SOUTHWEST  
BACKYARD**

**UPPER FLOOR  
LOFT**

**FACING SCHOOL  
GREENSPACE**

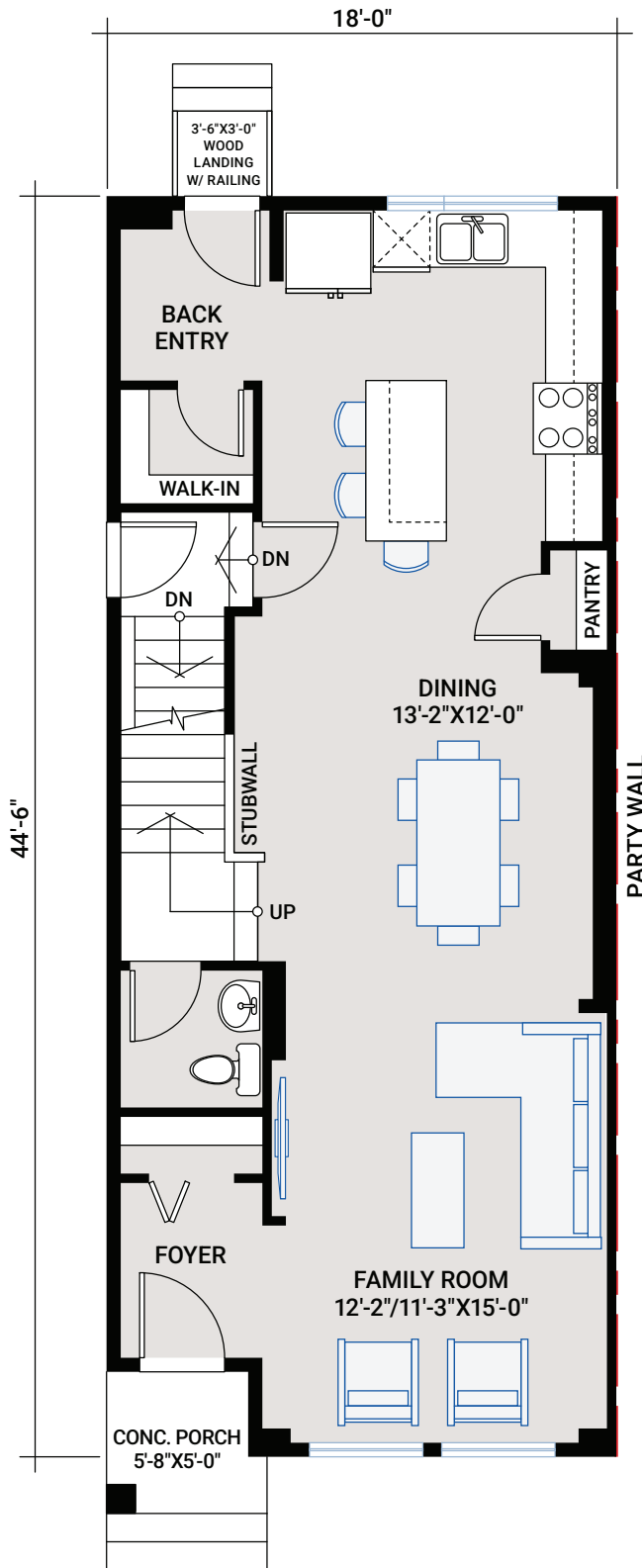
**SILVERTON**

1,634 SQ FT | 3 BED | 2.5 BATH

**CARDEL  
HOMES**

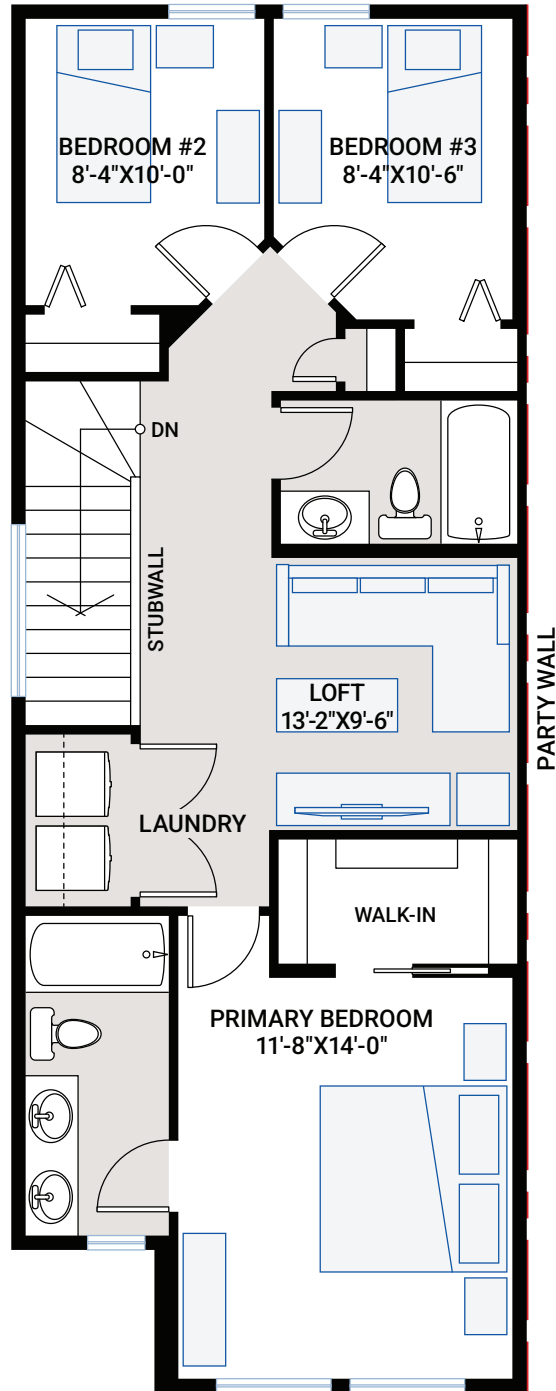
# MAIN FLOOR

786 SQ FT



# UPPER FLOOR

848 SQ FT



## OUTSTANDING FEATURES

- Southwest backyard
- Front facing school greenspace
- Paved lane
- 9' main floor ceiling
- 9' basement foundation
- Upper floor loft
- Separate side entrance to basement
- LVP flooring throughout main floor
- LVP flooring in upper floor hallway and loft
- Tile flooring in bathrooms
- Custom cabinetry package including:
  - Soft close hardware
  - Dovetail drawer construction
  - Matte black hardware
- Stainless steel appliances:
  - Samsung French door counter-depth refrigerator
  - Samsung electric range
  - Samsung smart dishwasher
  - Whirlpool microwave
  - Wall-mount chimney hood fan
- Blanco granite double bowl kitchen sink in Coal Black
- Upgraded railing
- Upgraded wall tile package
- Quartz countertops throughout
- Upgraded Delta Trinsic kitchen faucet in matte black
- Moen plumbing faucets and fixtures in matte black
- Double sinks in primary ensuite
- Upper floor laundry room
- Samsung front load washer and dryer
- Heat recovery ventilation system
- Cardel's premium spray foam attic insulation assembly
- Rough-in gas line to kitchen stove and deck
- 30-year shingles

### INTERIOR COLOUR PALETTE

