
🕒 QUICK POSSESSION



MODERN PRAIRIE SL4

MIDTOWN 2
(PREMIUM PAIRED HOME)

SILVERTON (LOT 35)
283 SILVERTON GLEN ROAD SW

1,634 ^{SQ}_{FT}

**DOUBLE DETACHED
GARAGE**

**UPPER FLOOR
LOFT**

**FACING SCHOOL
GREENSPACE**

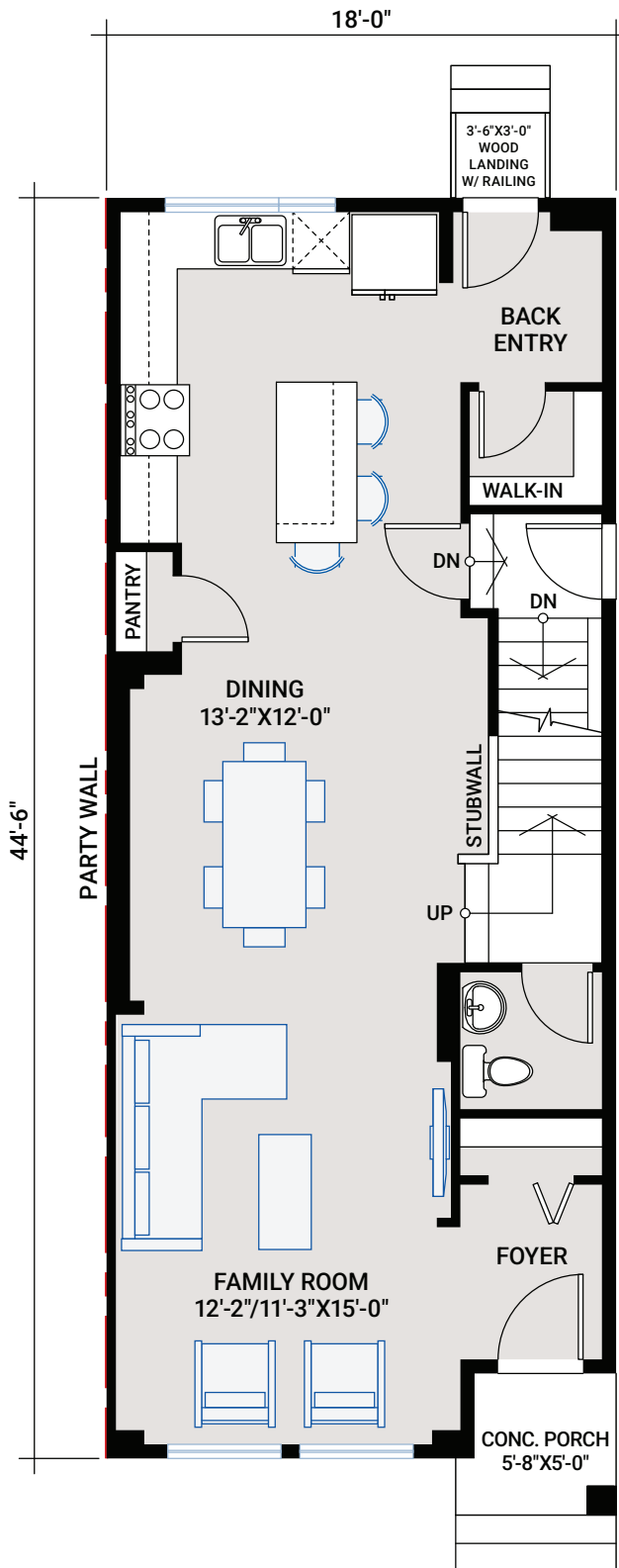
SILVERTON

1,634 SQ FT | 3 BED | 2.5 BATH

**CARDEL
HOMES**

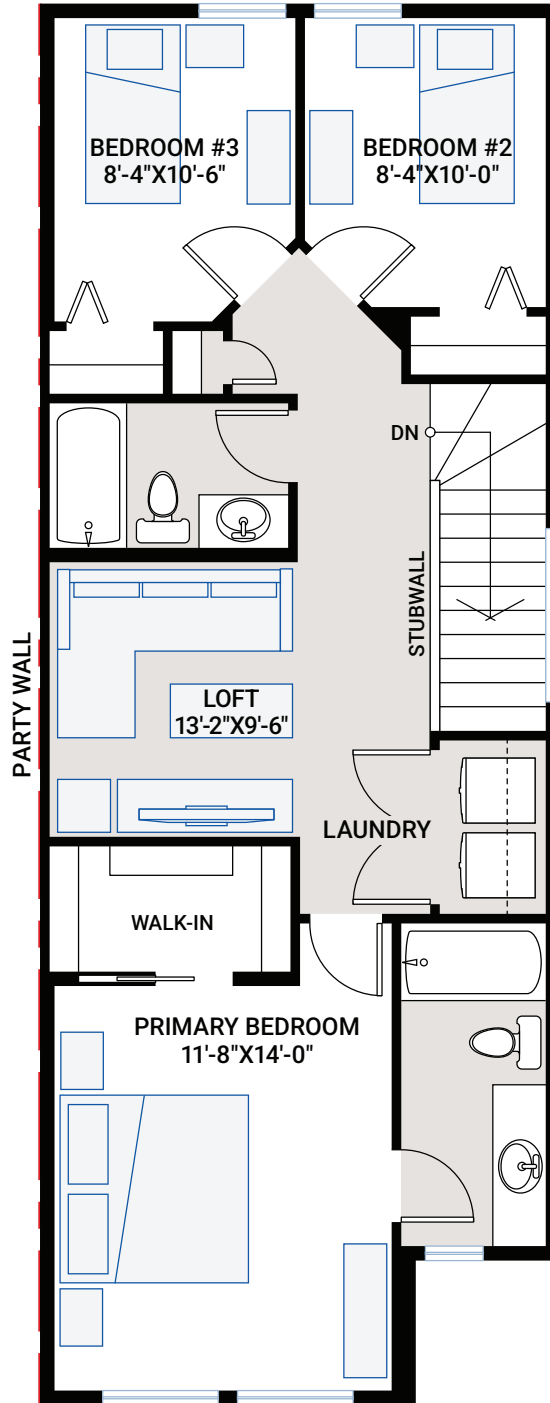
MAIN FLOOR

786 SQ FT



UPPER FLOOR

848 SQ FT



OUTSTANDING FEATURES

- Double detached garage
- Southwest backyard
- Front facing school greenspace
- Paved lane
- 9' main floor ceiling
- 9' basement foundation
- Upper floor loft
- Separate side entrance to basement
- LVP flooring throughout main floor
- LVP flooring in upper floor hallway and loft
- Tile flooring in bathrooms
- Custom cabinetry package including:
 - Soft close hardware
 - Dovetail drawer construction
 - Matte black hardware
- Stainless steel appliances:
 - Samsung French door counter-depth refrigerator
 - Samsung electric range
 - Samsung smart dishwasher
 - Whirlpool microwave
 - Wall-mount chimney hood fan
- Blanco granite double bowl kitchen sink in Coal Black
- Upgraded railing
- Upgraded wall tile package
- Quartz countertops throughout
- Upgraded Delta Trinsic kitchen faucet in matte black
- Moen plumbing faucets and fixtures in matte black
- Double sinks in primary ensuite
- Upper floor laundry room
- Samsung front load washer and dryer
- Heat recovery ventilation system
- Cardel's premium spray foam attic insulation assembly
- Rough-in gas line to kitchen stove and deck
- 30-year shingles

INTERIOR COLOUR PALETTE

