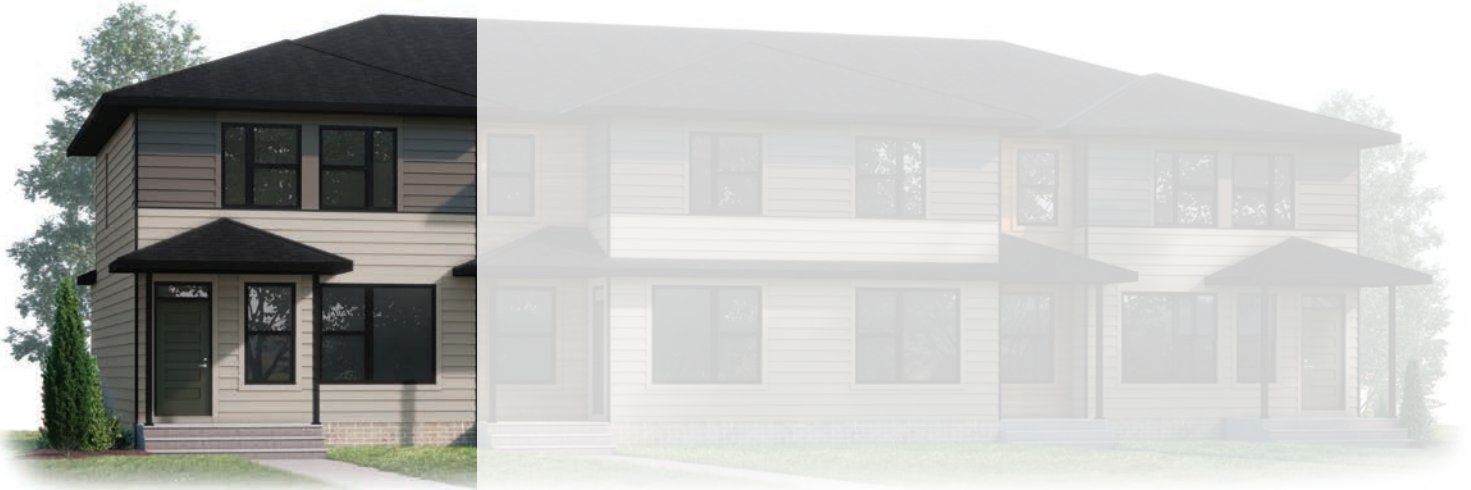

🕒 QUICK POSSESSION



MODERN PRAIRIE SL1

Artistic representation only. Actual colours and finishes may vary. See pre-approved exterior colour scheme for final selections.

EDGE 1
STREET TOWN

SILVERTON (LOT 17)
1346 SILVERTON BOULEVARD SW

1,450 SQ
FT

**REAR DETACHED
GARAGE**

**9' MAIN FLOOR
CEILINGS**

**STEPS FROM FUTURE
COMMERCIAL**

EDGE
Silverton Street Towns

1,450 SQ FT | 3 BED | 2.5 BATH

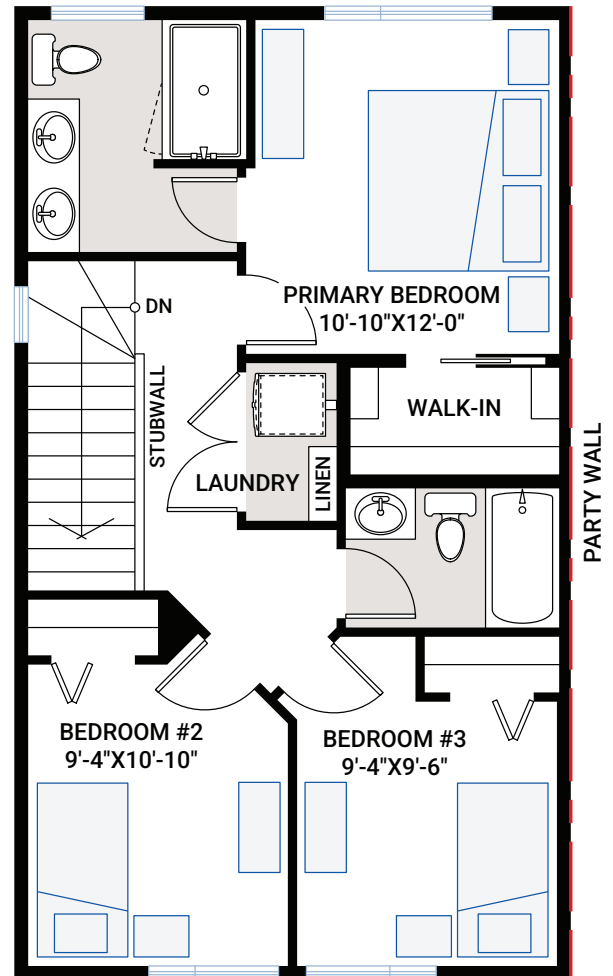
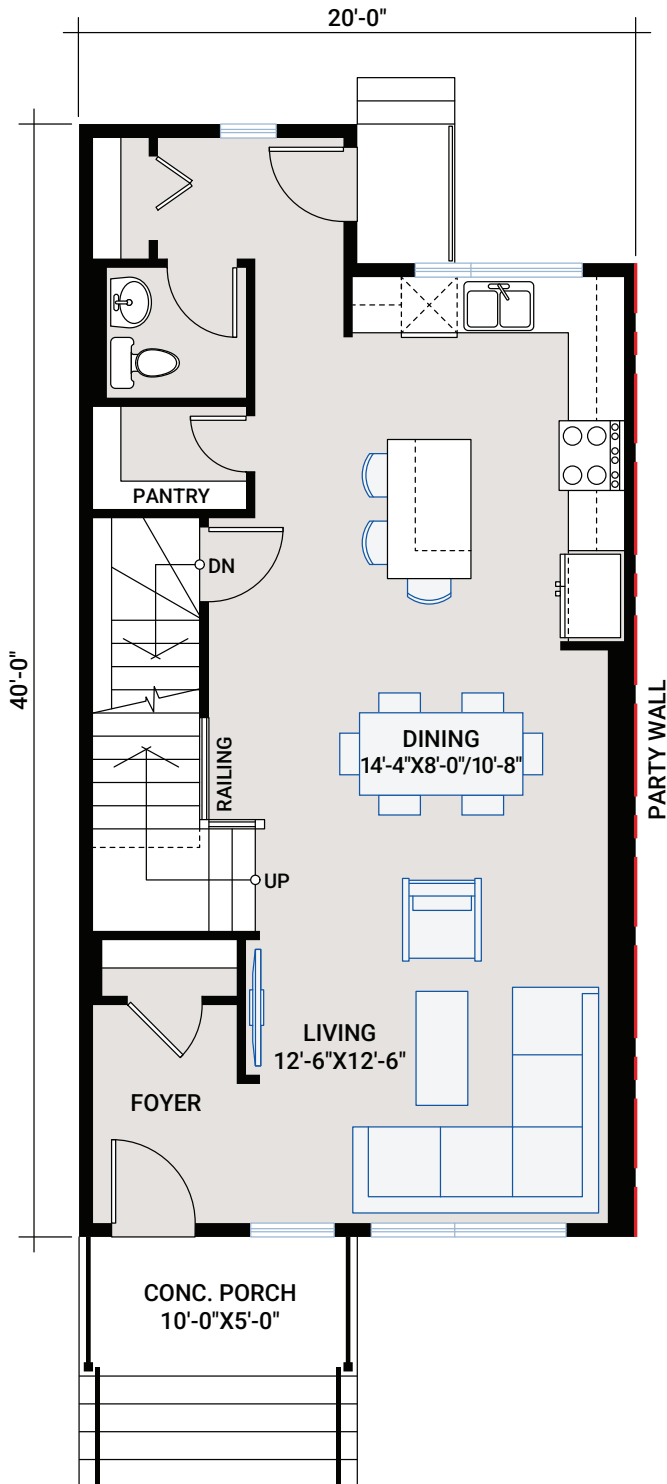
CARDEL
HOMES

MAIN FLOOR

750 SQ FT

UPPER FLOOR

700 SQ FT



OUTSTANDING FEATURES

- Rear double detached garage
- Open concept main floor
- Walk-in pantry
- 9' main floor ceiling
- 9' basement foundation walls
- Upper floor washer and dryer
- LVP flooring throughout main floor
- Tile flooring in bathrooms
- Custom cabinetry package including:
 - Soft close hardware
 - Dovetail drawer construction
 - Brushed nickel hardware
- Quartz countertops throughout
- Delta Kitchen faucet in stainless steel
- Brookmoore stainless steel undermount sink
- Stainless steel appliances:
 - Samsung French door counter-depth refrigerator with ice maker
 - Samsung slide in electric range
 - Samsung smart dishwasher
 - Samsung over the range microwave
- Upgraded wall tile package
- Moen plumbing faucets and fixtures
- Dual ensuite sinks
- Samsung front load washer and dryer
- Heat recovery ventilation system
- Cardel's premium spray foam attic insulation assembly
- 30-year shingles

INTERIOR COLOUR PALETTE

1346 SILVERTON BLVD
EDGE SCHEME #3
 SATIN SLEET CABINETS

