
🕒 Quick Possession



CANADIANA A1

THE ALTON

1160 BRONZE AVENUE (LOT 86)

**OPEN CONCEPT
MAIN FLOOR**

**MAIN FLOOR
FLEX ROOM**

**FAMILY ROOM WITH
GAS FIREPLACE AND
VAULTED CEILING**

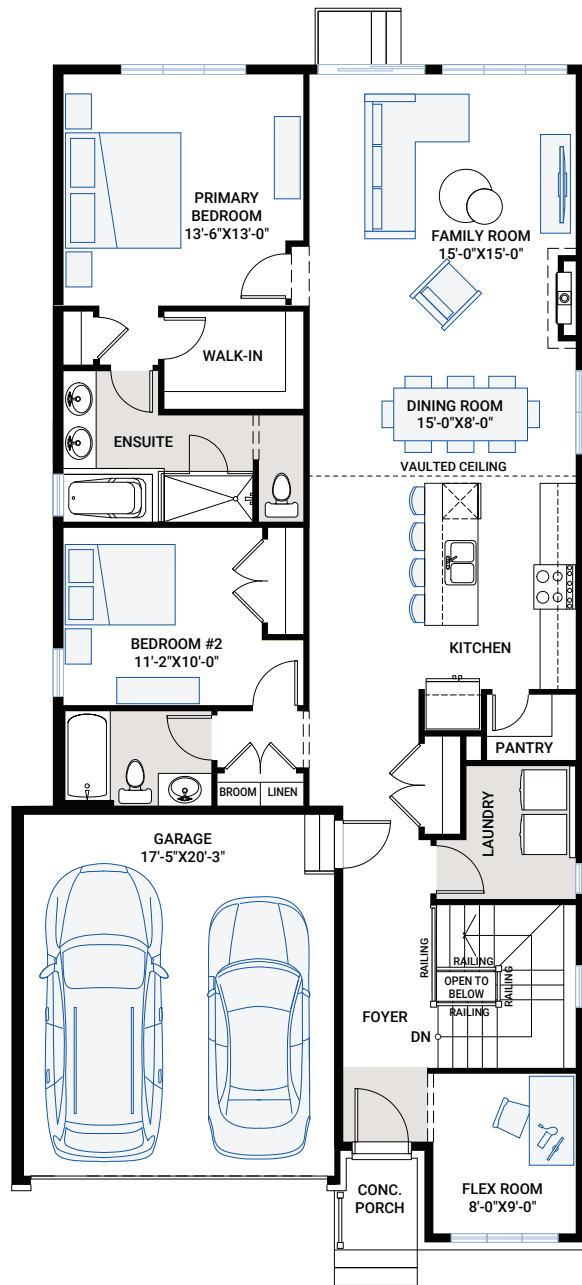


1,588 SQ FT | 2 BED+DEN | 2 BATH

CARDEL
HOMES

MAIN FLOOR

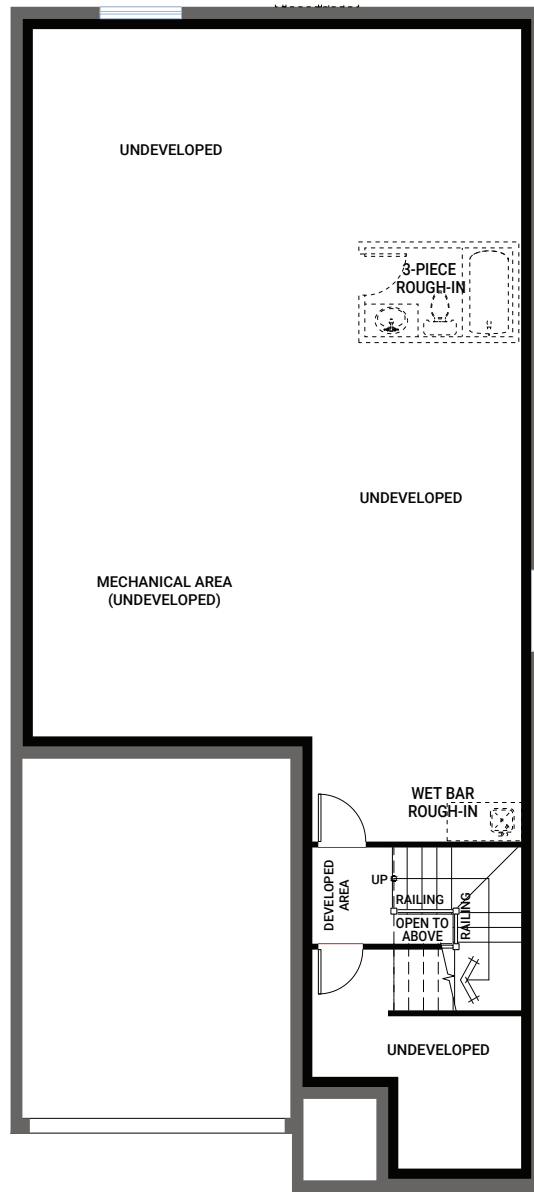
1,530 SQ FT



FOR MORE INFORMATION CONTACT: **THANG NGUYEN**, New Home Consultant
thang.nguyen@cardelhomes.com | P: 343.573.2464

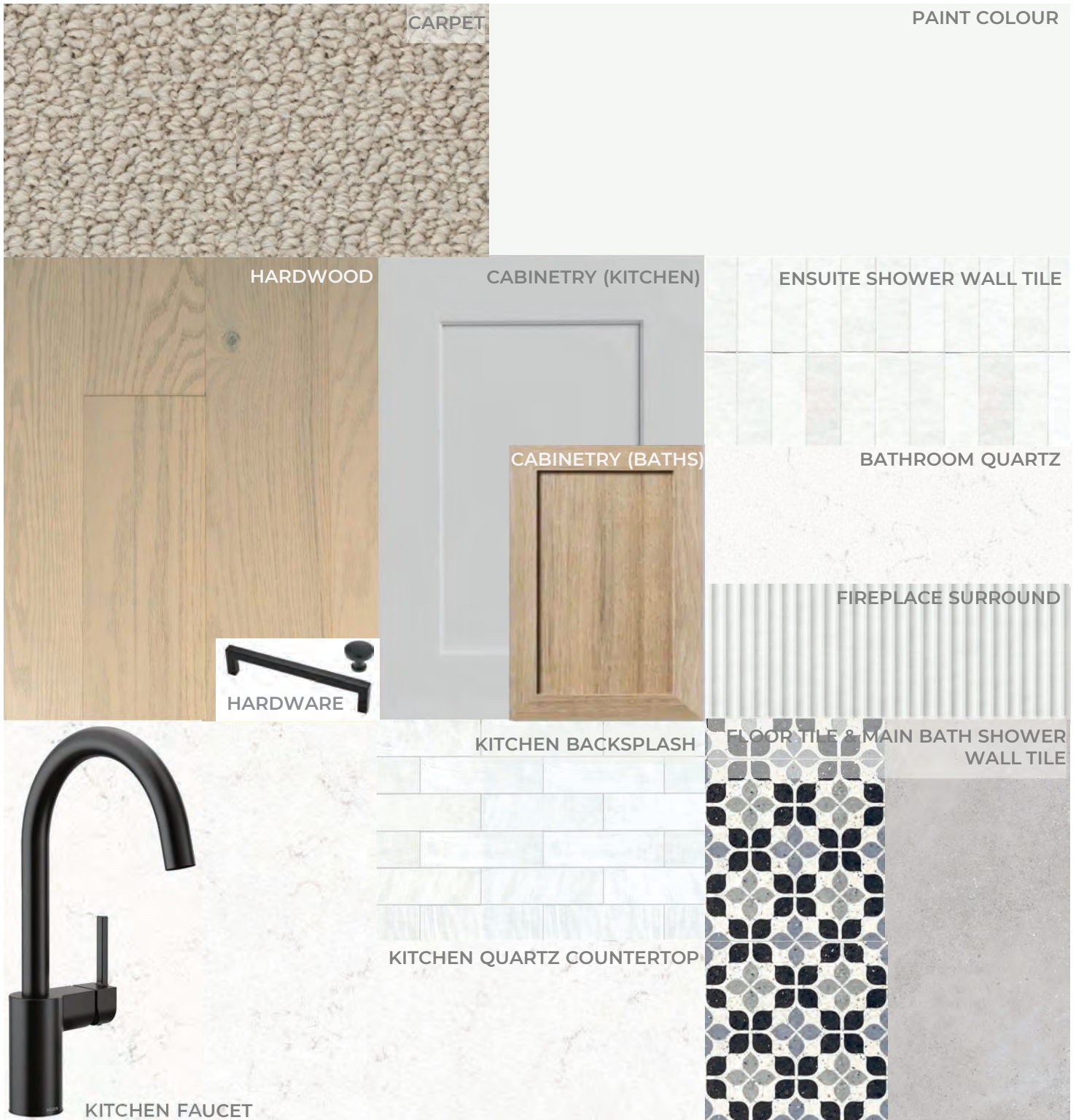
BASEMENT

55 SQ FT



- Open-concept main floor with gas fireplace and vaulted ceiling
- Main floor den located at the front of the home
- Custom cabinetry including:
 - Extended upper cabinets with filler to ceiling
 - Soft-close, black hardware
 - Pots and pans drawers
 - Chimney-style hood fan
 - Raised vanity height in ensuite and main bath
- Extended double-car garage
- South-facing entrance
- Quartz countertops in bathrooms
- Custom kitchen with 8' island
- Primary bedroom with walk-in closet and secondary closet
- Thoughtful ensuite with large shower and built-in bench
- Designer selected interiors

INTERIOR COLOUR SCHEME – 11



* All sizes are nominal. The colours represented on this page may vary from the actual product colours. Actual samples can be viewed by appointment.