

---

# 🕒 QUICK MOVE-IN

---



FARMHOUSE A2

THE **AIDEN**

1151 BRONZE AVENUE (LOT100)

---

FULLY FINISHED  
BASEMENT

FAMILY ROOM WITH  
CUSTOM FIREPLACE

9' BASEMENT  
CEILINGS

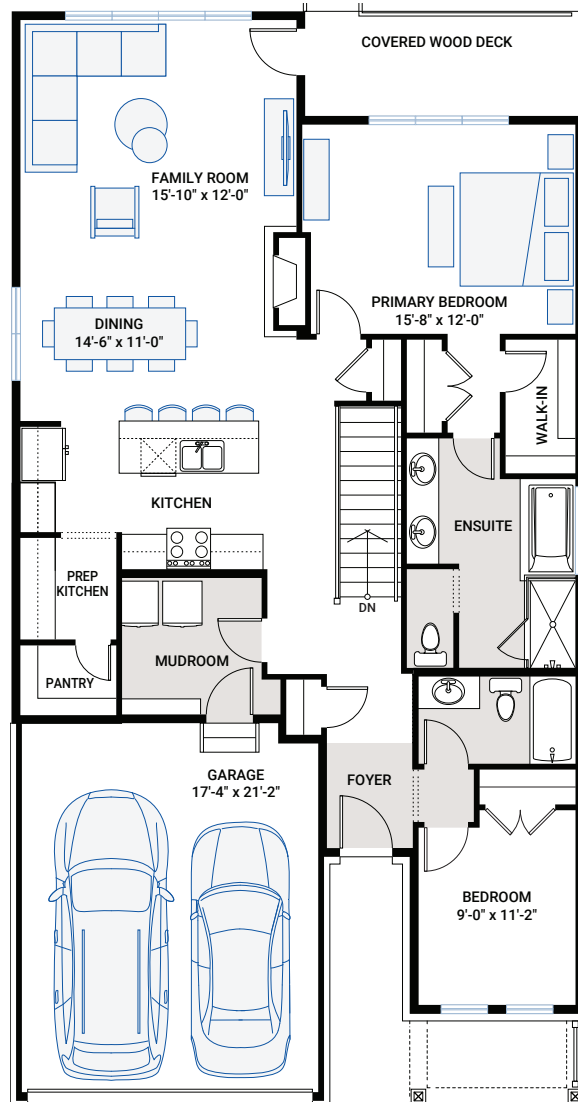


2,606 SQ FT | 2 BED+2 BASEMENT BED | 3 BATH

**CARDEL**  
HOMES

## MAIN FLOOR

1,469 SQ FT

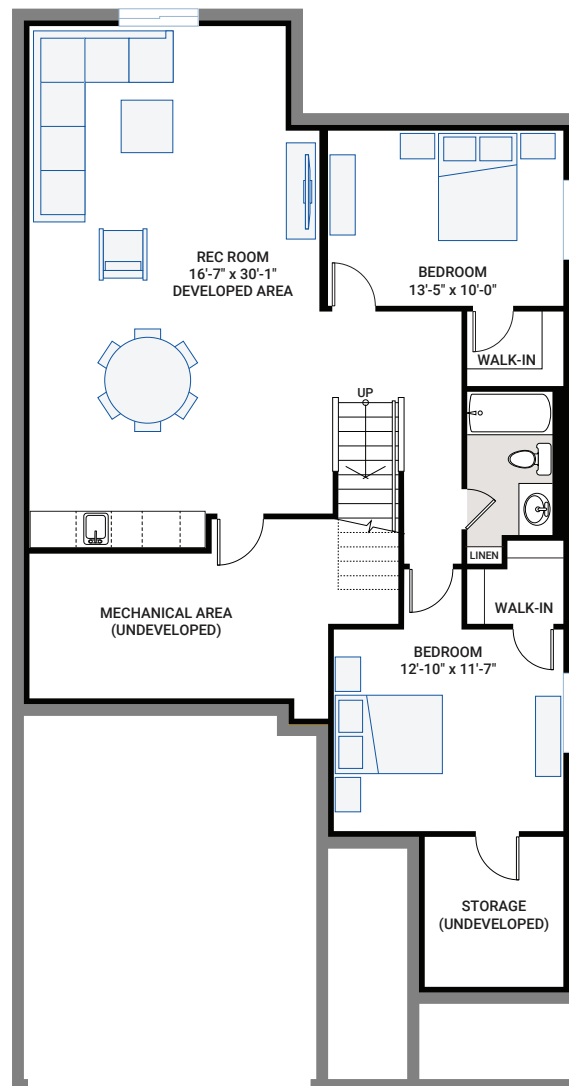


**FOR MORE INFORMATION CONTACT: THANG NGUYEN**, New Home Consultant  
thang.nguyen@cardelhomes.com | P: 343.573.2464

---

## BASEMENT

1,137 SQ FT



- Farmhouse bungalow with finished basement and 4 bedrooms
- Developed basement with 9' ceilings and two large bedrooms with walk-in closets
- Open concept layout with custom fireplace with shiplap to ceiling
- Quartz countertops throughout
- Upgraded hardwood throughout main floor
- Custom kitchen with large 8' island and prep kitchen
- Custom cabinetry including:
  - Extended upper cabinets with filler to ceiling
  - Pots and pans drawers
  - Chimney-style hood fan
  - Raised vanity height in ensuite and main bath
  - Large primary bedroom with two walk-in closets
- South facing backyard onto greenspace



# GALLERY

