

THE SYLVAN VILLA

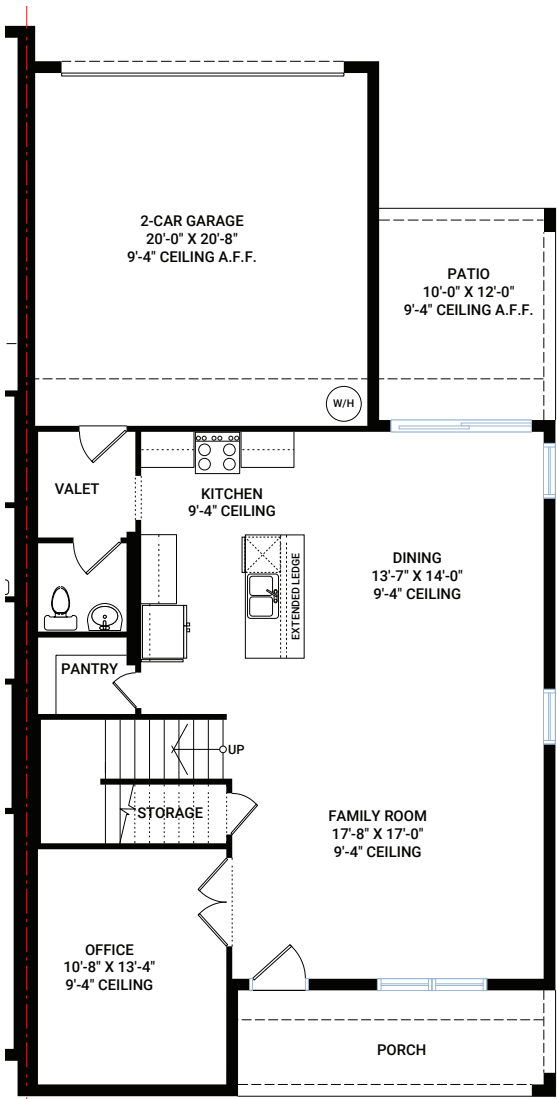
10705 WADING RIVER AVE., PARRISH | LOT 18 | BLOCK 44
2,104 SQ FT | 3 BED | 2.5 BATH

Contact Jeremy Spurlin for more information
941.299.7121 | jeremy.spurlin@cardelhomes.com

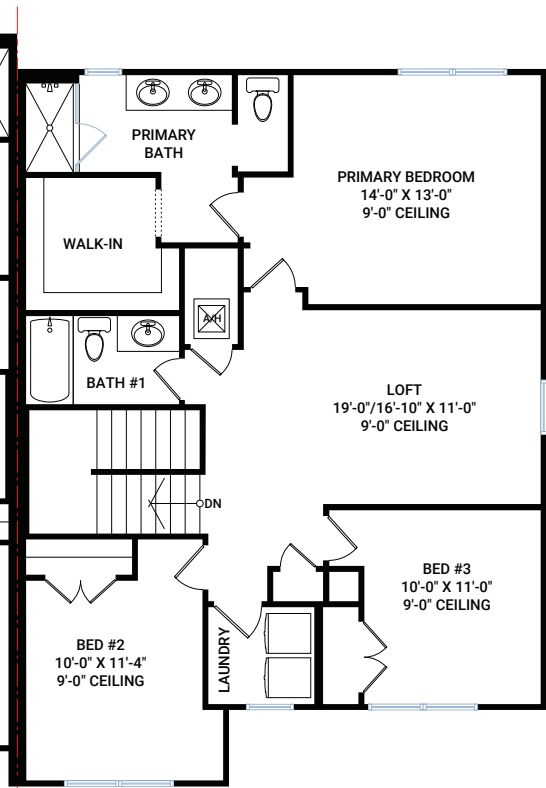


Outstanding Features:

- All inclusive with appliances
- Quartz countertops
- Luxury vinyl flooring
- Blinds and design package
- 8 foot doors on main level
- 3 bedrooms plus an upstairs loft space and study
- Soft close drawers and cabinets throughout
- 2-car garage



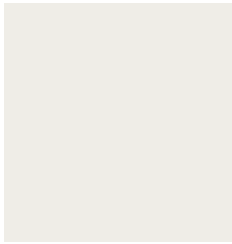
MAIN FLOOR



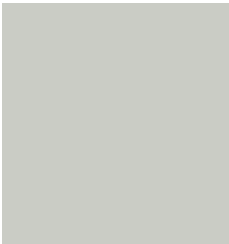
UPPER FLOOR

MAIN	1,035 SQ FT
UPPER	1,069 SQ FT
TOTAL LIVING	2,104 SQ FT
PATIO	120 SQ FT
PORCH	108 SQ FT
GARAGE	413 SQ FT
TOTAL UNDER ROOF	2,745 SQ FT

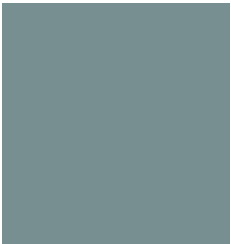
THE EXTERIOR COLOR SCHEME



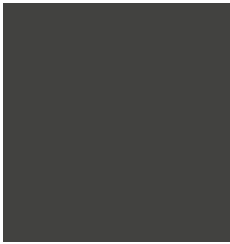
Exterior Body
SW7005 Pure White



Exterior Body 2
SW7757
SW7651 Front Porch



Body Accent:
SW6221 Moody Blue



Doors, Window Trim
SW7069 Iron Ore



Boral Stone
Pro-Fit Alpine LedgeStone
Echo Ridge



Roof Shingles
Moire Black

THE INTERIOR DESIGN ELEMENTS



Cabinet
Smart Cabinetry
Summit - Elegant White



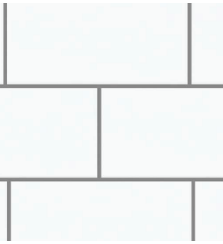
Countertop
MSI - Carrara Morro



Floor
Shaw Polaris Plus
Lighthouse



Carpet
Shaw Collier Peak
Ice



Wall Tile
Shaw Baker Blvd - White

NORTH RIVER RANCH

THE SYLVAN VILLA | 2,104 SQ FT

CARDELHOMES.COM

CARDEL
HOMES