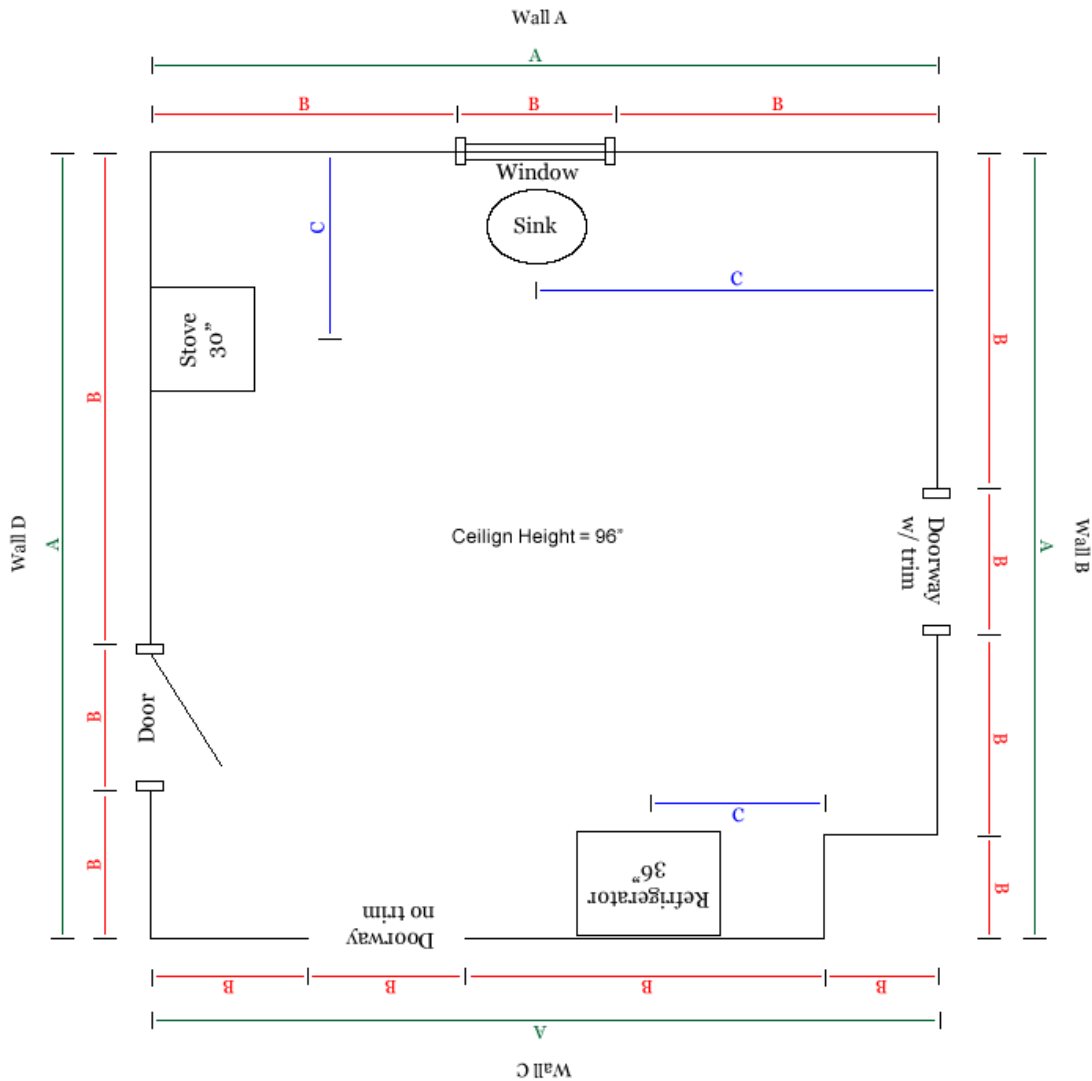


**MEASUREMENT GUIDE**



- A. Measure outside room dimensions. In situations where there are obstructions, measure away from the wall, capturing the whole length of the side of the room.
- B. Measure windows doors and inside corners such as chimneys, closets or built-in-pantries.
  - a. Start from one side of the wall.
  - b. Measure from the corner of wall to the outside trim of a window or door.
  - c. Measure the width of the door or window from outside trim to outside trim, not the frame of the window itself. If you are replacing the trim or trim is not installed, then measure to the inside of the frame of the window but indicate that on the drawing.
  - d. For finished, trimless doorways or openings, measure to the finished corner of the opening.
- C. Measure the location of sinks and appliances. Measure from corner of the wall to the center of the sink or the center of the stove/oven. If this is new construction them measure to the plumbing or gas line of the appliance and indicate that on the drawing.

# FLOOR PLAN GRID

Small square = 2" Large Square = 10"

