





Tchefuncte River Toll Bridge

Madisonville/Mandeville, LA

July 19, 2018

Attendees

Rick Mayfield	Vice President	Macquarie Capital
Pat Brister	Parish President	St. Tammnay Parish
Anne Pablovich	Assistant to the President	St. Tammany Parish
Mike Lorino, Jr.	Councilman District 4	St. Tammany Parish
Anecia Kenley	Legislative Assistant - Rep. Mark Wright District 77	Louisiana House of Representatives
Jean Pelloat	Mayor	Town of Madisonville
Thomas Faherty	President	Trinity Marine Products
Michael Saucier	President Broker	Gulf States Real Estate Services, LLC
Benjamin Tassin	Program Delivery District 62 Design Engineer	LA DoTD
Jennifer Branton	Engineering	LA DoTD
Christopher Hnatyshyn	Vice President Business Development	Kyle Associates, LLC Engineering

PROJECT PRESENTED BY:

CLIFTON ROYSTON, PE

ROYSTON ENGINEERING & CONSULTING SERVICES

& GUEST

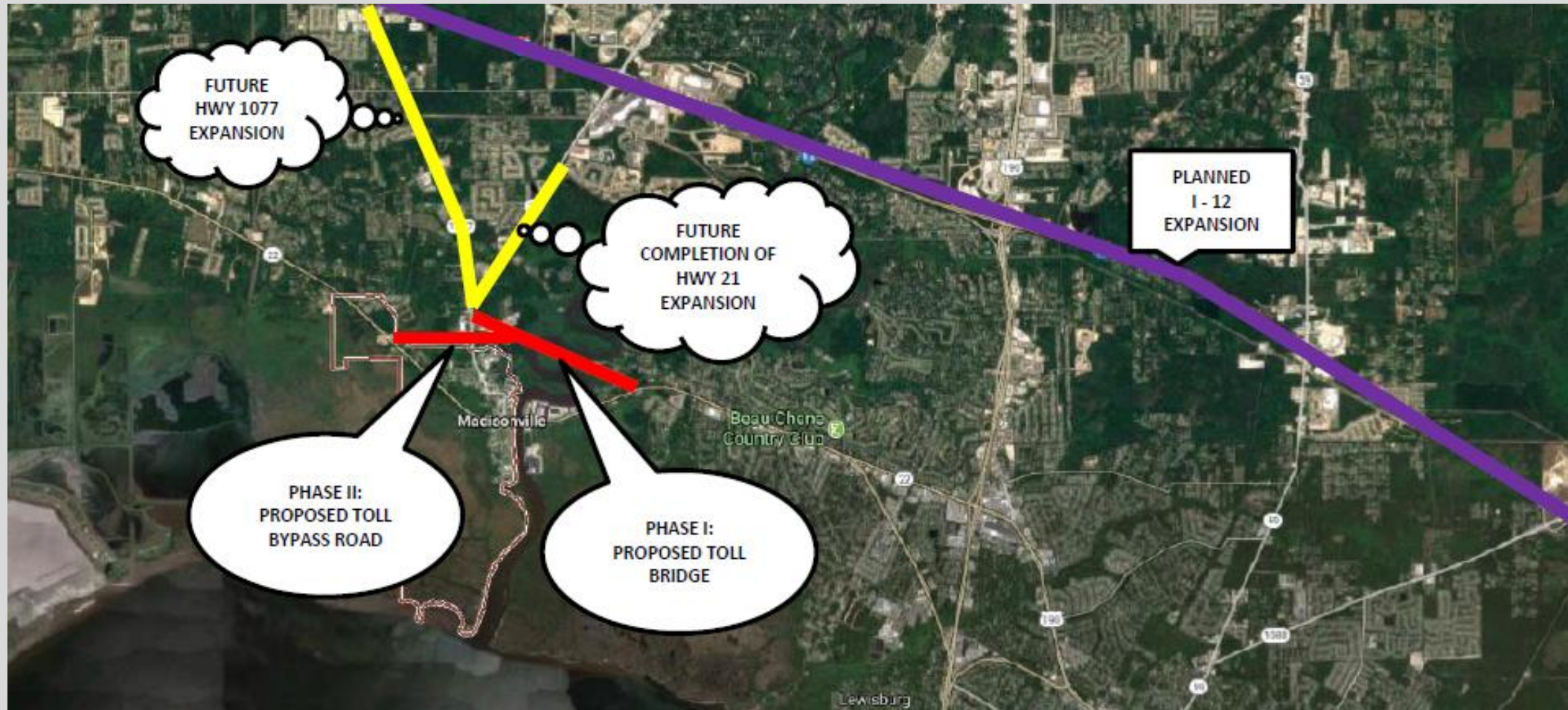
RICK MAYFIELD, PE

MACQUARIE CAPITAL

PROJECT OVERVIEW

PHASE I PORTION ~ 1.4 MILES IN LENGTH

ESTIMATED COST TO COMPLETE ~ \$120 TO \$140 MILLION USD (LAND ACQUISITION, CONSTRUCTION, ENGINEERING)





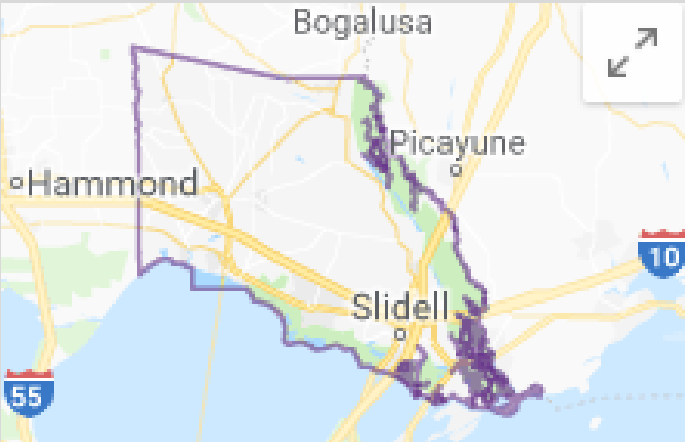
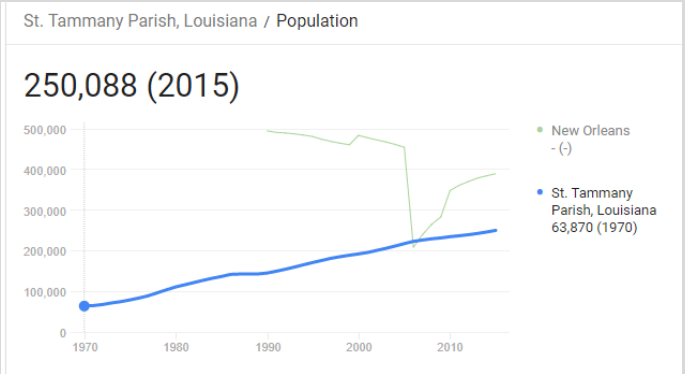
LOCAL POPULATION STATISTICS:

Troy C. Blanchard
Associate Professor of Sociology
Louisiana State University

Submitted to:
Office of Electronic Services
Division of Administration
State of Louisiana

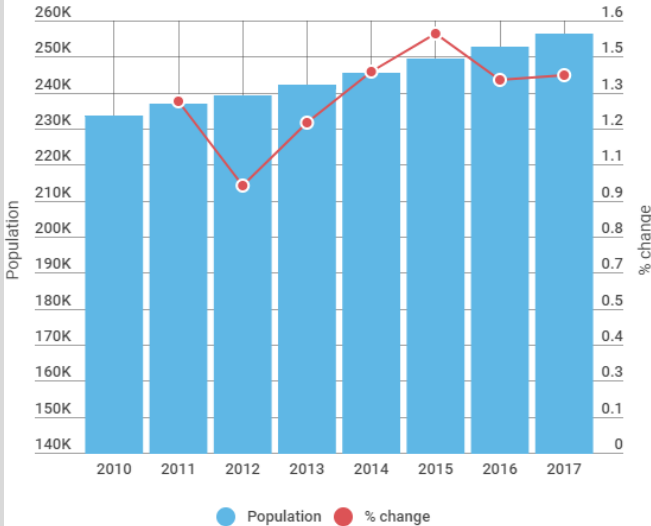
Table 1 (Continued). Projected Total Population for Louisiana Parishes

FIPS	PARISH	Total Population					
		2005	2010	2015	2020	2025	2030
22000	Louisiana	4,510,170	4,369,760	4,477,680	4,588,310	4,699,260	4,813,420
22103	St. Tammany	219,870	246,910	288,710	338,300	395,210	459,160
22105	Tangipahoa	106,180	111,730	116,990	121,950	126,740	131,350



How has St. Tammany Parish's population changed?

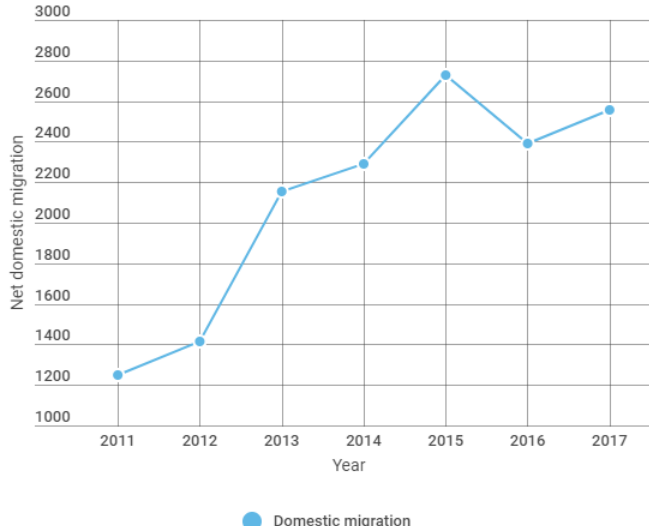
The graph shows the population of St. Tammany Parish from the 2010 Census as well as population estimates for 2011 to 2017. The red line indicates the percent change in total population from year to year.



Source: U.S. Census Bureau

People continue to move to St. Tammany Parish

The graph shows net domestic migration to St. Tammany Parish from 2011 to 2017. Net domestic migration compares the total number of people who have moved into the parish with the total number who have moved out.

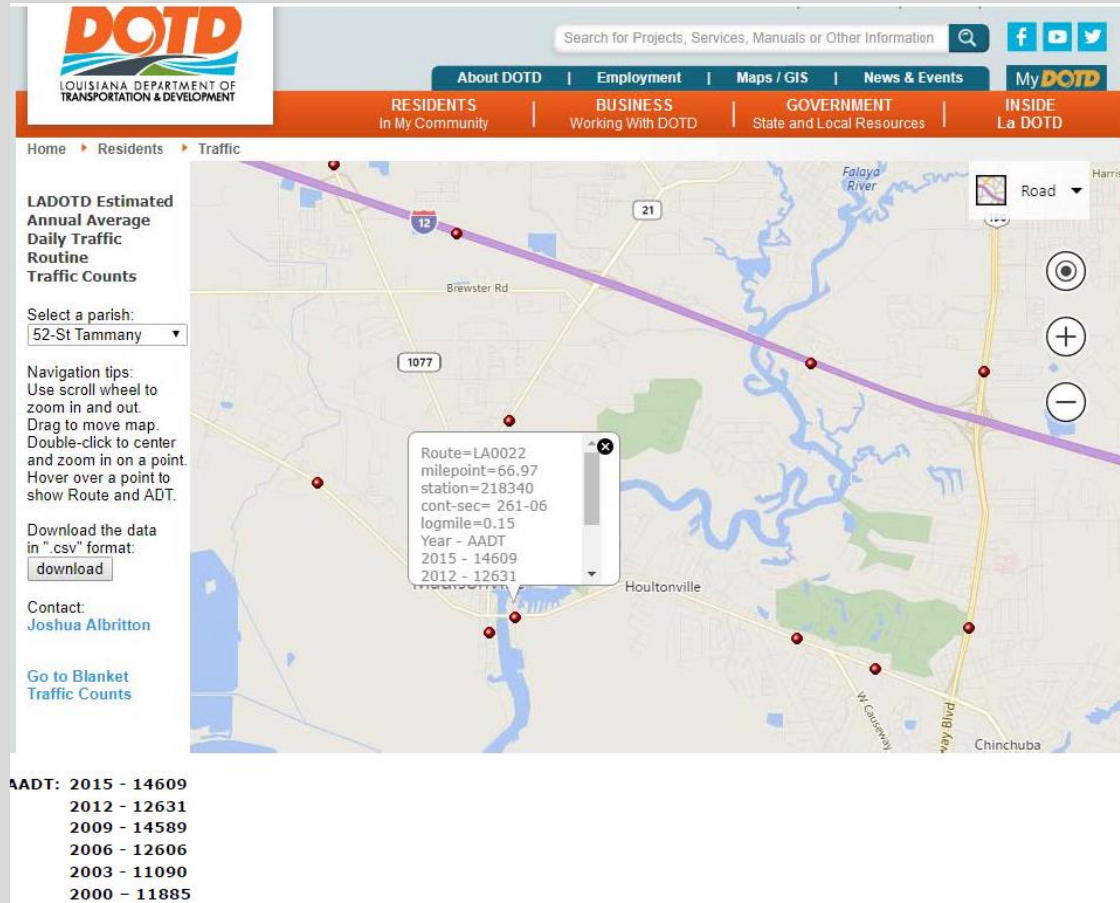


Source: U.S. Census Bureau

COMMUNITY VALUE PROPOSITIONS

- LESS COMMUTE TIMES
 - WILL RELIEVE MADISONVILLE OF EXCESSIVE IN TOWN TRAFFIC FLOW
 - AREA AIR QUALITY IMPROVEMENTS / ENVIRONMENTALLY BENEFICIAL
 - WILL INCREASE SURROUNDING AREA REAL ESTATE VALUES
 - WILL ALLOW FOR GROWTH & FUTURE COMMUNITY EXPANSION
 - WILL STIMULATE COMMERCIAL DEVELOPMENT AND GROWTH ALONG HWYS 22, 21 & 1077
- PARISH TAX REVENUE FROM TOLL COLLECTIONS / AREA GROWTH / INCREASED TIME PRODUCTIVITY
- NEW EAST / WEST CORRIDOR FOR COMMUTERS & CITIZENS TO USE / LESS I-12 LOCAL UTILIZATION
 - HURRICANE EVACUATION CORRIDOR
- **JOBS, JOBS, AND MORE JOBS!**

COMMUNITY TIME BENEFIT ANALYSIS:



RUSH HOUR COMMUTE EFFICIENCY CALCULATION:

~30 MINUTES PER DRIVER DELAY @
~1000 DRIVERS / DAY = 30,000 MINUTES
SITTING IN TRAFFIC EVERY DAY!

$30,000/60 = 500$ HOURS A DAY OF LOST
PRODUCTIVITY

~ 2500 HOURS A WEEK (5 day work week)
~ 10,000 HOURS A MONTH, LOST!

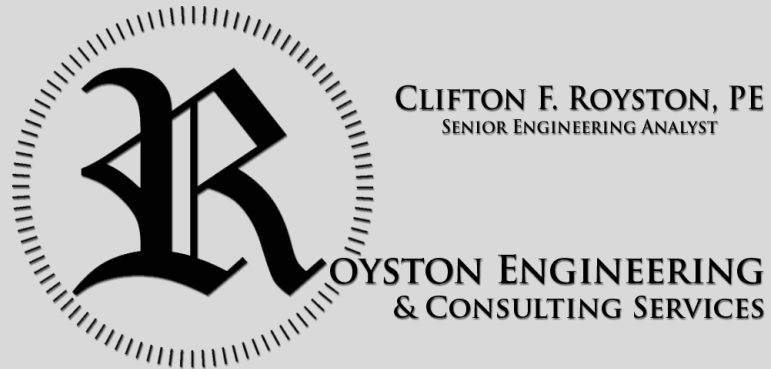
~ 120,000 MAN HOURS A YEAR OF LOST
PRODUCTIVITY! THIS FIGURE DOESN'T EVEN
INCLUDE WEEKEND PRODUCTIVITY LOSSES!

PROJECT ROAD BLOCKS & CHALLENGES

- NEED LIMITED ACCESS THROUGH FAIRVIEW STATE PARK
- HOW MUCH? WILL BE DETERMINED BY USCG HEIGHT REQUIREMENTS FOR NEW BRIDGE STRUCTURE (DESIGN NEEDS), EXISTING HISTORICAL STRUCTURES / TREES AND ENVIRONMENTAL IMPACT STUDIES
- TOLLS, TOLLS, TOLLS

QUESTIONS?

THANK YOU



Virtual Animation



designvis.com

Image Capture & Editing

GEAUX MEDIA

GeauxMedia.com