



# FRIGIDAIRE

## Factory Parts Catalog

Product No.	FFFH20F3VW0
Series	Frigidaire
Color	white
Volts	115
Wiring Diagram	A14353601
Owner's Guide	A12735802
Market	North America
Energy Guide	A06191457
Quick Start	A14365701

### Frigidaire

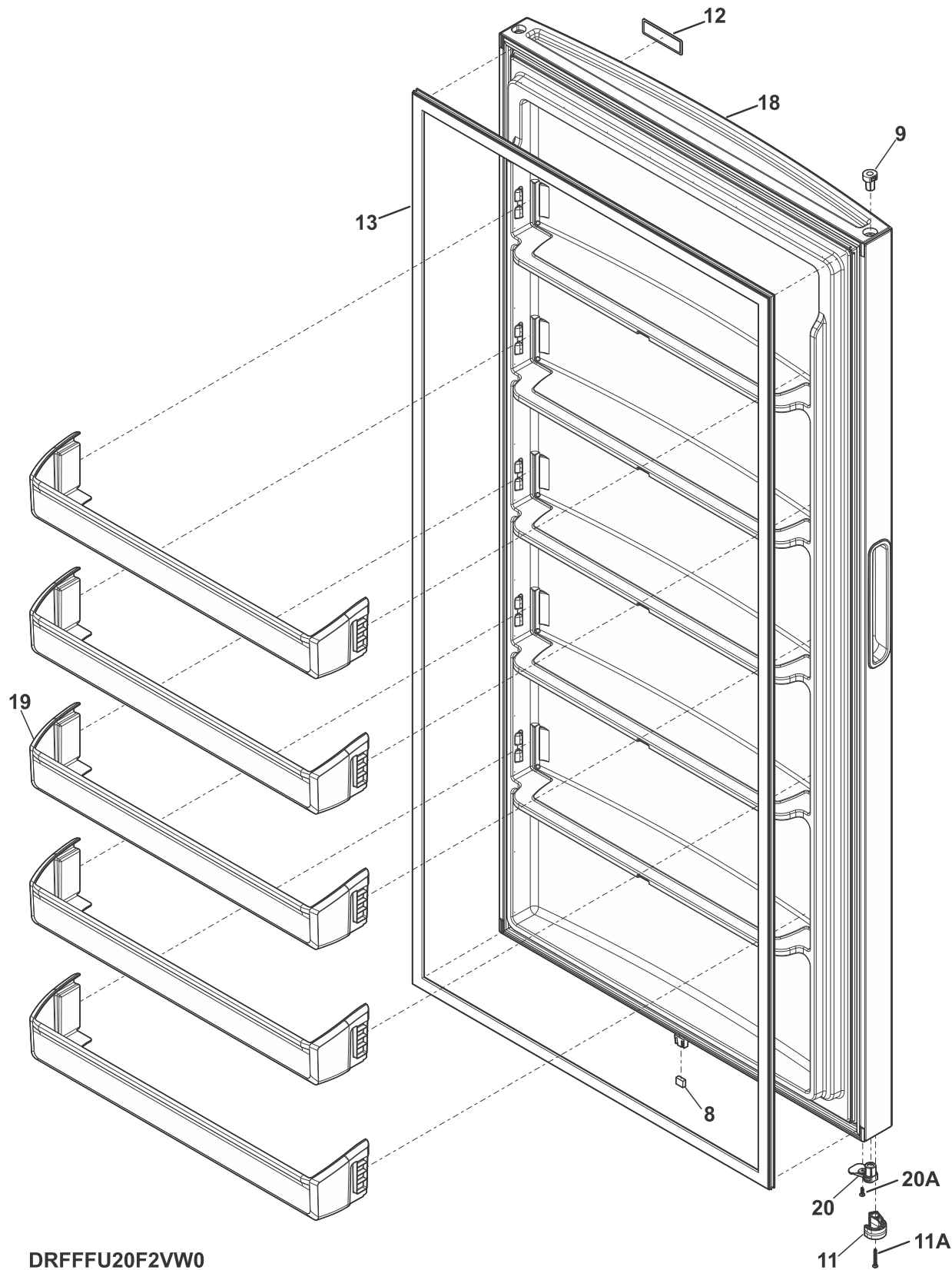
P.O. BOX 8020  
CHARLOTTE, NC 28262

Publication No.  
**5995719274**  
19/12/13  
(EN/SERVICE/)  
365

### UPRIGHT FREEZER

Model No.  
FFFH20F3V

DOOR

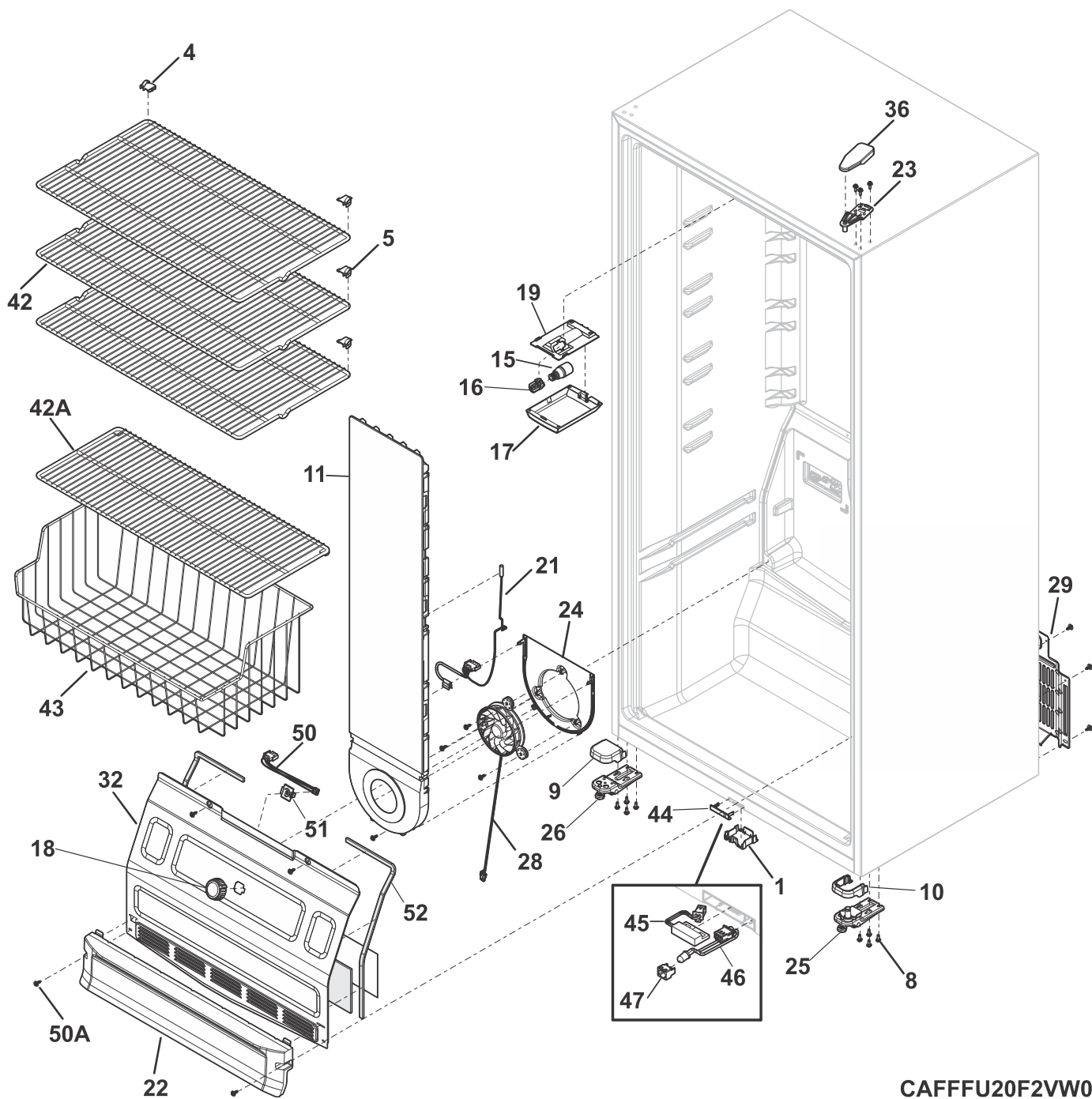


**DOOR**

---

<b>POS. NO</b>	<b>PART NO.</b>	<b>DESCRIPTION</b>
8	5304519044	Magnet, reed switch
9	5304519757	Bearing, hinge, white
11	5304519789	Hook, door closer, white
11A	241953905	Screw, 8-18 X 1.25
12	5304511144	Badge, Frigidaire, white
13	5304523811	Gasket, door
18	5304523717	Door, assembly
19	5304523719	Shelf-door
20	5304523784	Bearing, door, lower
20A	241953901	Screw, quad hilo, #8-18 x 0.50

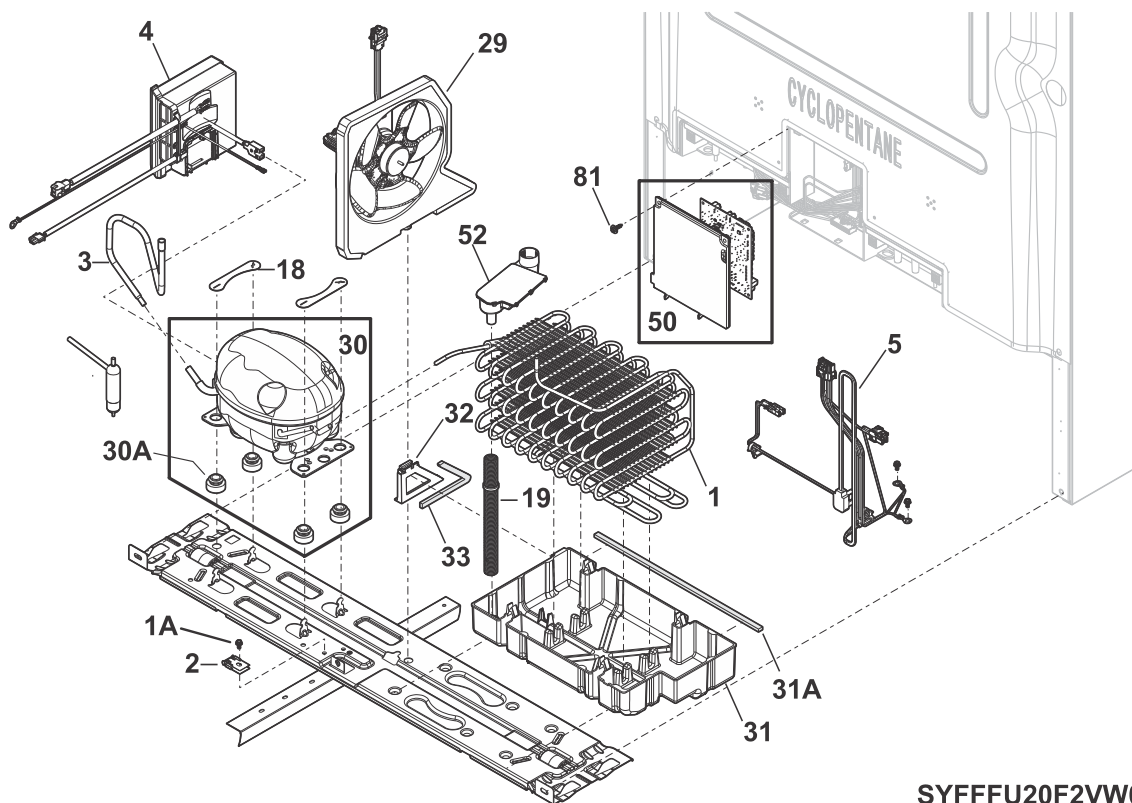
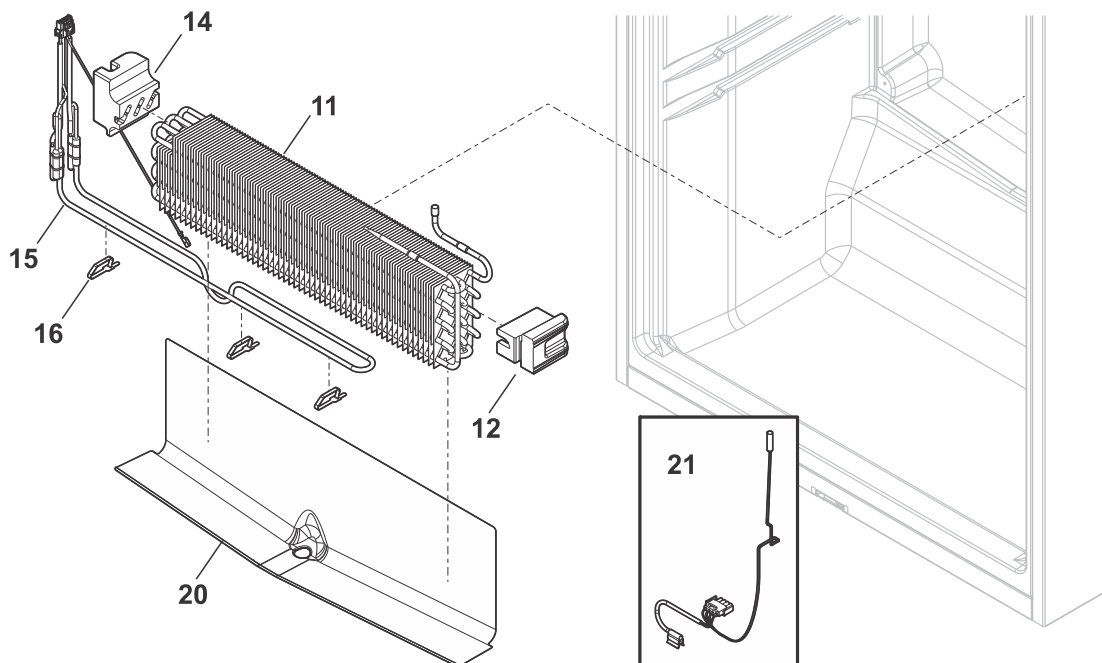
# CABINET



**CABINET**

POS. NO	PART NO.	DESCRIPTION
1	5304523792	Cover, reed switch
1*	240433204	Screw, hex washer head, 8-18 x 5/16
4	5304522258	Clip, wire shelf, LH
5	5304522259	Clip, wire shelf, RH
8	5304522279	Screw, hex wsh hd quad, M5 x 16
9	5304519777	Cover, hinge, white, lower, non hinged
10	5304522244	Cover, hinge side, white, lower
11 #	5304523725	Air Tower
15	5304522314	BULB, light, E17/12 LED
16 #	5304522315	Socket, LED light
17	5304523778	Cover, lens
18	5304523758	Knob, temp control
19	5304523777	Mount, socket
21 #	5304523788	Harness Assembly, temp/defrost, w/thermostats
22	5304523753	Diverter, air
23	5304523689	Hinge, upper
24	5304523722	Mount-fan, evaporator
25	5304523746	Hinge-bottom, assembly, RH
26	5304523747	Hinge-bottom, assembly, LH
28 #	5304523741	Motor-fan, evaporator
29	5304523769	Cover, access
32	5304523726	Cover, evaporator
36	5304519784	Cover, upper hinge, white
42	5304523692	Shelf, sliding, (3)
42A	5304523712	Shelf, wire, lower
43	5304523751	Basket, wire, lower
44	5304523785	Cover, light guide
45	242326001	Switch, reed
46	5304523827	LED
47	5304523828	Socket
50 #	5304523789	Harness, Potentionmeter
50A	5304523738	SCREW-HEX WASH HD., M4.2 x 16
51	5304523768	Clip, potentiometer
52	5304523723	Seal, foam
*	242039703	Screw, 10-16 TYPE AB
*	5304523801	SCREW-HEX WASH., HD M4 x 10

# SYSTEM



SYFFFU20F2VW0

**SYSTEM**

POS. NO	PART NO.	DESCRIPTION
1 #	5304523710	CONDENSER-DYNAMIC
1A	240433204	Screw, hex washer head, 8-18 x 5/16
2	5304454459	Clamp-cable
3 #	5304522111	Tube, suction jumper
4 #	5304523779	Inverter, Flexdrive 2.2
5 #	5304523761	HARNESS-MACH.COMPT VSC
11	5304523830	Coil
12	5304523831	Support, evaporator, RH
14	5304523832	Support, evaporator
15	5304523833	Defrost Heater
16	5308000110	Strap-evap/heater, aluminum, (2)
18	5304519812	CLAMP COMPRESSOR
19	5304523706	TUBE-DRAIN CORRUGATE
20	5304523720	Trough-drain
21 #	5304523788	Harness Assembly, temp/defrost, w/thermostats
29 #	5304519734	Fan Assembly, condenser, w/shroud-foam
30	5304523780	Compressor, TKD91E
30A	5304523829	Grommet
31	5304523709	Pan-drain
31A	5304519744	Tape-foam
32	5304519745	Baffle, drain pan, air block
33	5304519751	Seal, foam, air block
50 #	5304523745	MAINBOARD, w/housing, ERF300
51	5304523802	ASSY-DRAIN JUMPER W/VAC RELIEF
52	5304523694	BAFFLE DIVIDER HIGH SIDE UF20
81	5304519765	Screw, hx wash hd, M4.2 x 12
*	240569202	Screw, 8-18 X .500
*	241500304	Screw, hex washer head, 8-18AB x 0.625
*	5304523801	SCREW-HEX WASH., HD M4 x 10