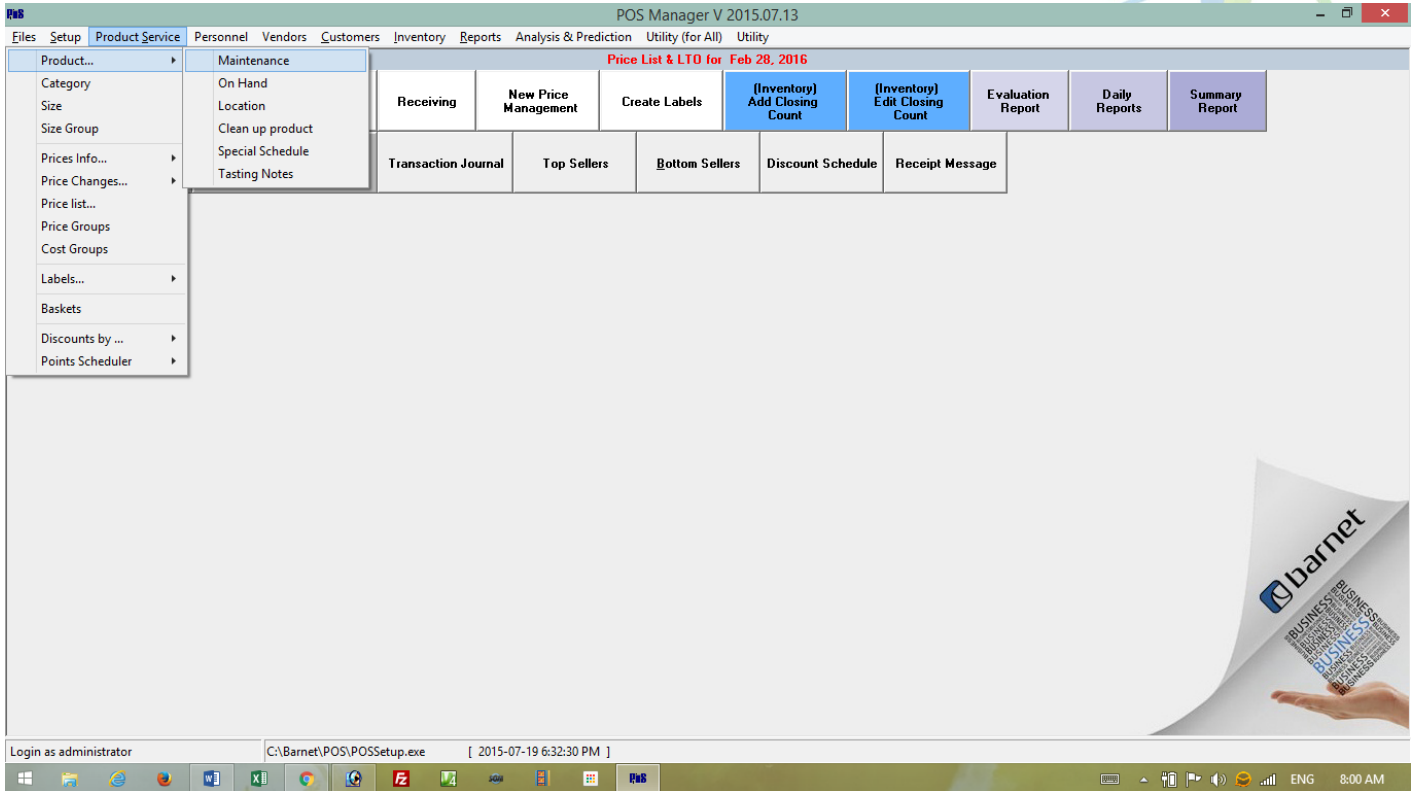


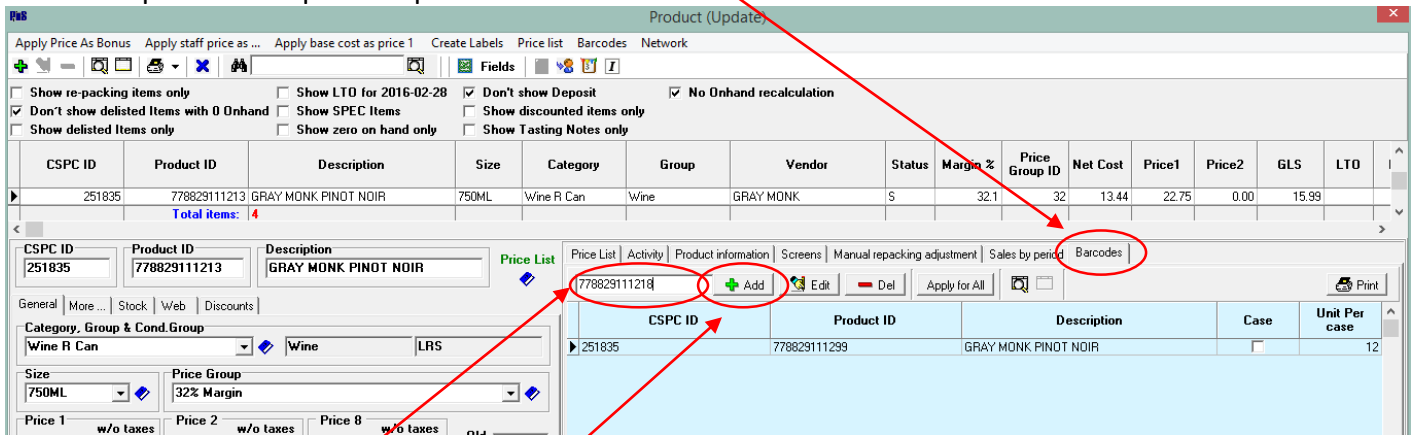


TIP-SHEET – Using the Barcode Editor to link additional barcodes to a product

Go to **PRODUCT MAINTENANCE** via the Product Maintenance button or from the menu as below.



Select the product to update. Open the **BARCODES** Editor tab.



Enter in the new Barcode and click the **ADD +** button.

!Warning! – Use caution when deleting or editing barcodes in the Barcode Editor, there is no 'undo' option.